

PRODUCT INFORMATION PACKET



Model No: 117888.00

Catalog No: 117888.00

Auger Drive Motor, 0.50 HP, 1 Ph, 60 Hz, 115/208-230 V, 1800 RPM, 56YZ Frame, TEFC



Regal and Leeson are trademarks of Regal Rexnord Corporation or one of its affiliated companies.

©2022 Regal Rexnord Corporation, All Rights Reserved. MC017097E





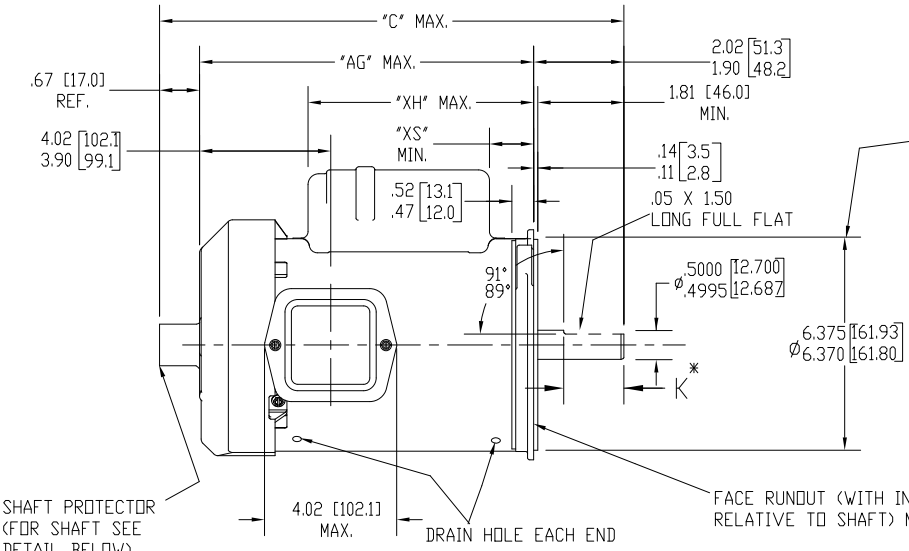
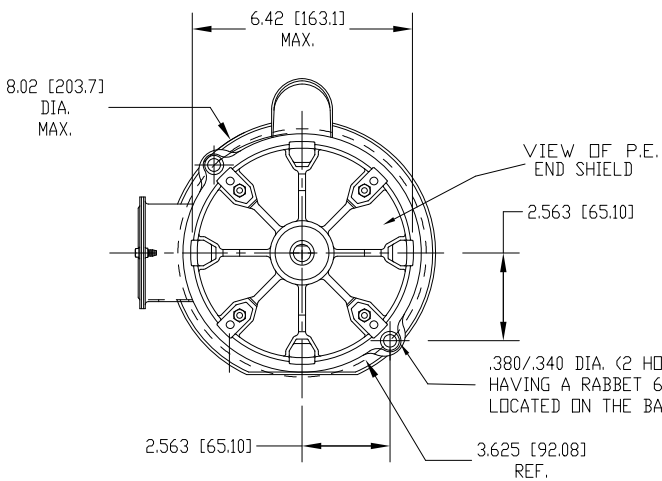
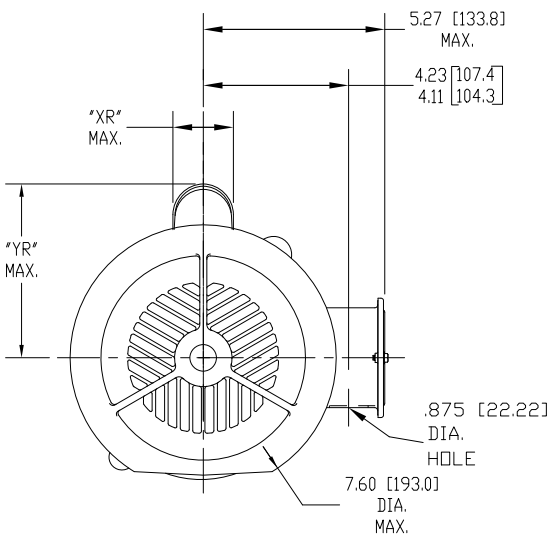
Nameplate Specifications

Output HP	0.50 Hp	Output KW	0.37 kW
Frequency	60 Hz	Voltage	115/208-230 V
Current	8.4/4.0-4.2 A	Speed	1725 rpm
Service Factor	1.25	Phase	1
Efficiency	59.9 %	Power Factor	70
Duty	Continuous	Insulation Class	B
KVA Code	M	Frame	56YZ
Enclosure	Totally Enclosed Fan Cooled	Thermal Protection	Manual
Ambient Temperature	40 °C	Drive End Bearing Size	6203
Opp Drive End Bearing Size	6203	CE	N
IP Code	43	Number of Speeds	1

Technical Specifications

Electrical Type	Capacitor Start Induction Run	Starting Method	SM
Poles	4	Rotation	Counterclockwise/Clockwise
Motor Orientation	Any	Drive End Bearing	Ball
Opp Drive End Bearing	Ball	Frame Material	Rolled Steel
Overall Length	12.00 in	Shaft Extension	.500 X 1.81 - 1.50 MIN LG CROSS MILLED FLAT in
Connection Drawing	52A105383BA	Outline Drawing	52A107766P1

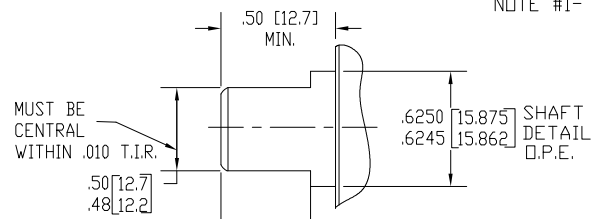
This is an uncontrolled document once printed or downloaded and is subject to change without notice. Date Created:11/29/2022



ECCENTRICITY OF THIS SURFACE (WITH INDICATOR MOUNTED STATIONARY RELATIVE TO SHAFT) MUST NOT EXCEED .006 T.I.R.

FACE RUNOUT (WITH INDICATOR MOUNTED STATIONARY RELATIVE TO SHAFT) MUST NOT EXCEED .006 T.I.R.

NOTE #1- *CUSTOMER ACTUALLY WANTS A DIMENSION OF K=1.50" MAX "LIKE" 1.50 INCHES PLUS .000/ MINUS .020. FOR MODEL# 117887.00 AND 117888.00



ALL DIMENSIONS ARE IN INCHES

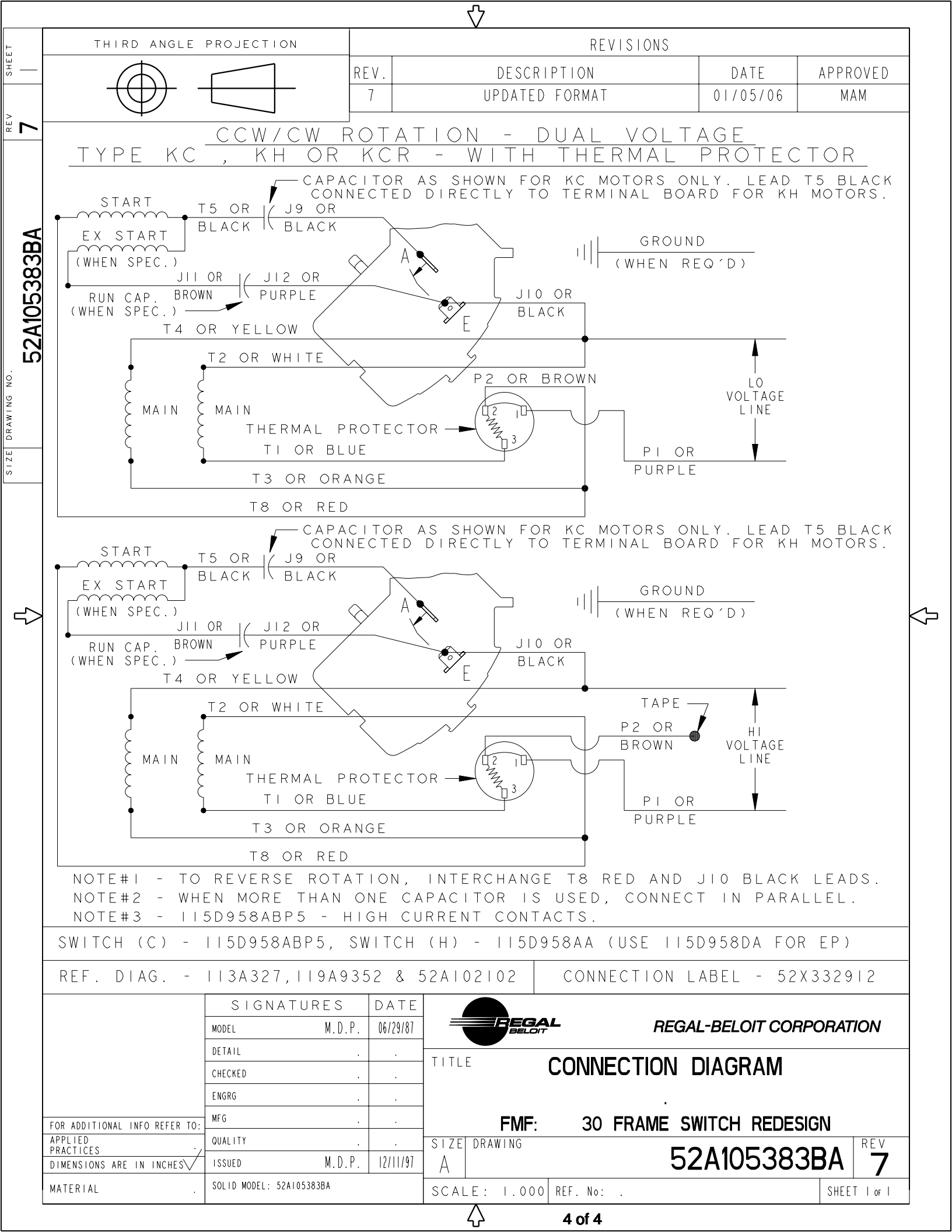
3	KC	46	56NY	13.13	10.42	7.21	5.44	2.40	1.46		7.68
2	KC	46	56NY	12.00	9.29	6.08	4.72	1.60	1.54		6.55
1	KC	46	56NY	12.00	9.29	6.08	5.34	2.22	1.54		6.55
P	TYPE	GE SIZE	NEMA FR.	"C"	"AG"	"XH"	YR	"XR"	"XS"		MIN. SHELL

DRAWING REVISION A	REVISION BY	REV. DATE / DATE
REQUEST NUMBER ECR-0215356	APPROVED BY	DATE
REQUEST NUMBER DESCRIPTION CREATED DRAWING IN CAD AND UPDATED SHAFT KEYWAY		
COPYRIGHT (PER REVISION DATE) REGAL BELLOIT AMERICA, INC. ALL RIGHTS RESERVED. PROPRIETARY AND CONFIDENTIAL INFORMATION - THIS DOCUMENT IS THE PROPERTY OF REGAL BELLOIT AMERICA, INC. (OWNER) AND CONTAINS OWNER'S PROPRIETARY INFORMATION. ANY PERSON, CORPORATION OR OTHER FIRM RECEIVING IT IS DEEMED, BY RECEIVING IT, TO AGREE THAT IT, AND/OR ANY PART OF IT, SHALL NOT BE DISCLOSED TO ANY PERSON, CORPORATION OR OTHER ENTITY, DUPLICATED, AND/OR USED, EXCEPT AS EXPRESSLY APPROVED IN WRITING IN ADVANCE BY OWNER. THIS DOCUMENT SHALL BE RETURNED TO OWNER UPON REQUEST. IT MAY BE SUBJECT TO CERTAIN RESTRICTIONS UNDER APPLICABLE EXPORT CONTROL LAWS AND REGULATIONS.		

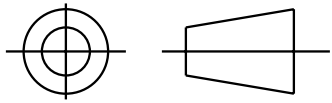
TOLERANCES (EXCEPT AS NOTED):
 DEC. INCH mm ANGLE
 .X ± 0.1 ± 3 05°
 .XX ± 0.01 ± 0.3
 .XXX ± 0.005 ± 0.13
 .XXXX ± 0.0005 ± 0.13
 REMOVE BURRS & BREAK SHARP EDGES: .003/.015 (.08/.38) X 45°
 CORNER FILLETS: R.02 (.5)
 MACHINED SURFACES: 125/32
 mm DIMENSIONS IN [BRACKETS] ARE FOR REFERENCE ONLY.

DRAWN BY: SRIKANTH
 DATE: 02/08/2022
 APPROVED BY: PVR
 DATE: 02/08/2022
 REFERENCE: THIRD ANGLE PROJECTION

Regal Rexnord Regal Beloit America, Inc.
 DESCRIPTION: OUTLINE
 SPECIAL PURPOSE MOTOR TEFC - BALL BEARING -2 LUG FLANGE
 FMF: 5KC46JN0076U
 MATERIAL: PROCESS/FINISH:
 SIZE B DRAWING NUMBER: 52A107766 SHEET 1 OF 1



THIRD ANGLE PROJECTION



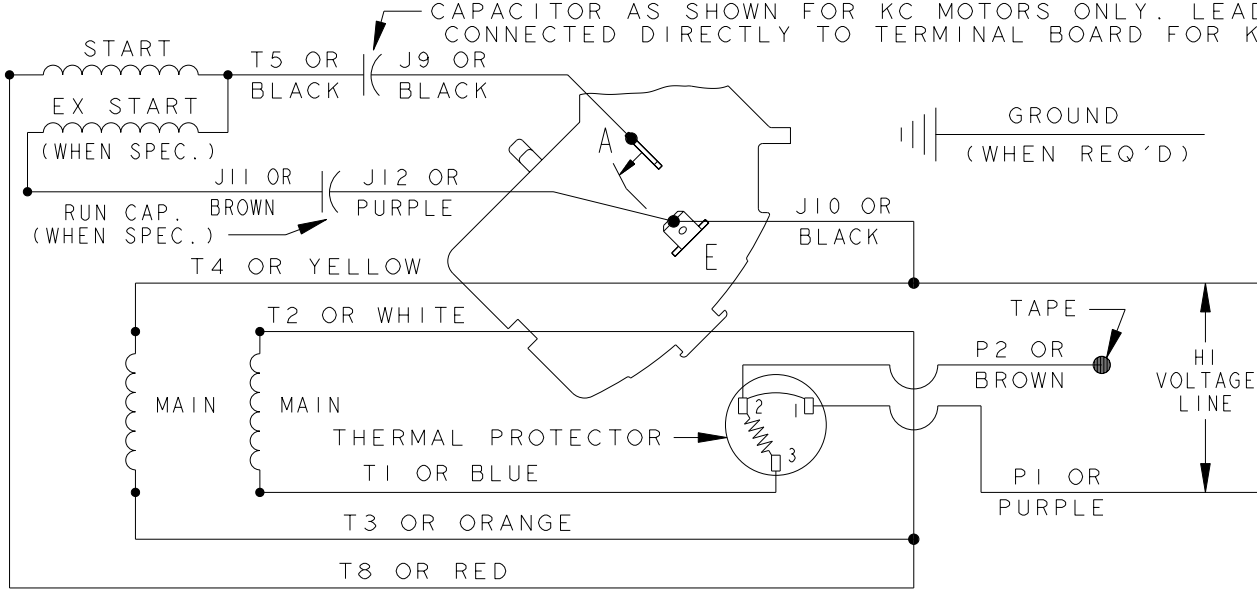
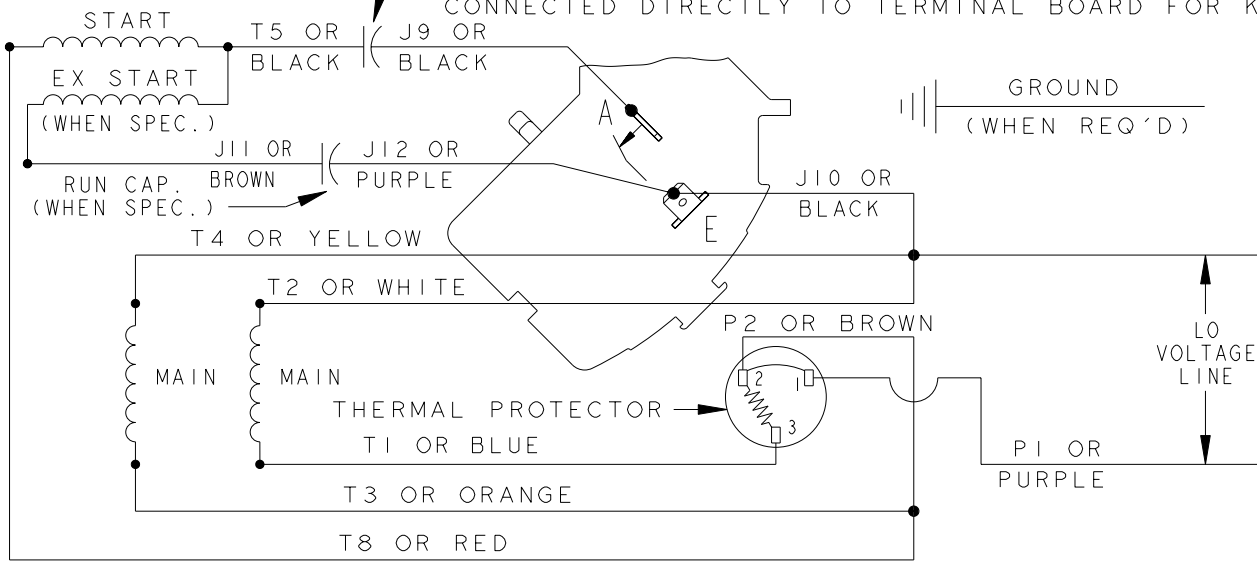
REVISIONS

REV.	DESCRIPTION	DATE	APPROVED
7	UPDATED FORMAT	01/05/06	MAM

CCW/CW ROTATION - DUAL VOLTAGE
TYPE KC , KH OR KCR - WITH THERMAL PROTECTOR

CAPACITOR AS SHOWN FOR KC MOTORS ONLY. LEAD T5 BLACK CONNECTED DIRECTLY TO TERMINAL BOARD FOR KH MOTORS.

52A105383BA



NOTE#1 - TO REVERSE ROTATION, INTERCHANGE T8 RED AND J10 BLACK LEADS.
 NOTE#2 - WHEN MORE THAN ONE CAPACITOR IS USED, CONNECT IN PARALLEL.
 NOTE#3 - 115D958ABP5 - HIGH CURRENT CONTACTS.

SWITCH (C) - 115D958ABP5, SWITCH (H) - 115D958AA (USE 115D958DA FOR EP)

REF. DIAG. - 113A327, 119A9352 & 52A102102 CONNECTION LABEL - 52X332912

SIGNATURES		DATE	<p>REGAL-BELOIT CORPORATION</p>	<p>TITLE</p> <p>CONNECTION DIAGRAM</p>
MODEL	M.D.P.	06/29/87		
DETAIL	.	.		
CHECKED	.	.		
ENGRG	.	.		
FOR ADDITIONAL INFO REFER TO:		MFG	<p>FMF: 30 FRAME SWITCH REDESIGN</p>	
APPLIED PRACTICES	QUALITY	.	SIZE	DRAWING
DIMENSIONS ARE IN INCHES ✓	ISSUED	M.D.P. 12/11/97	A	52A105383BA
MATERIAL	SOLID MODEL: 52A105383BA		SCALE: 1.000	REF. No. .
				REV 7
				SHEET 1 of 1