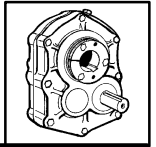
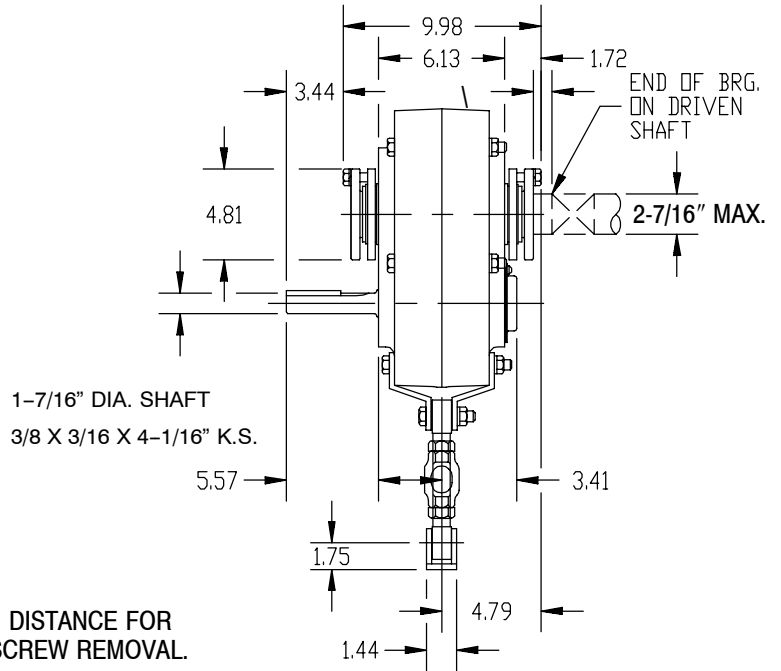
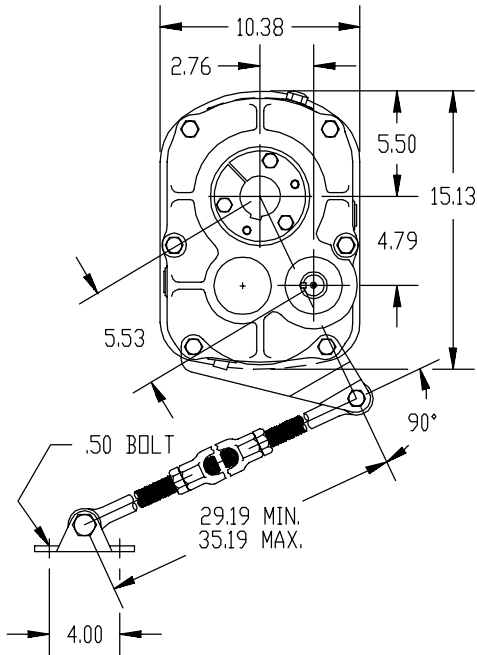


SELECTION/DIMENSIONS

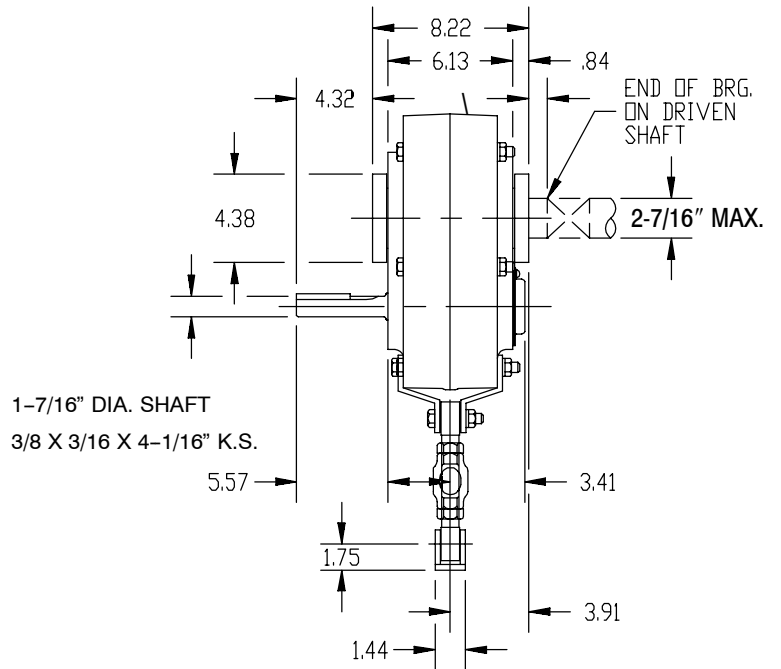
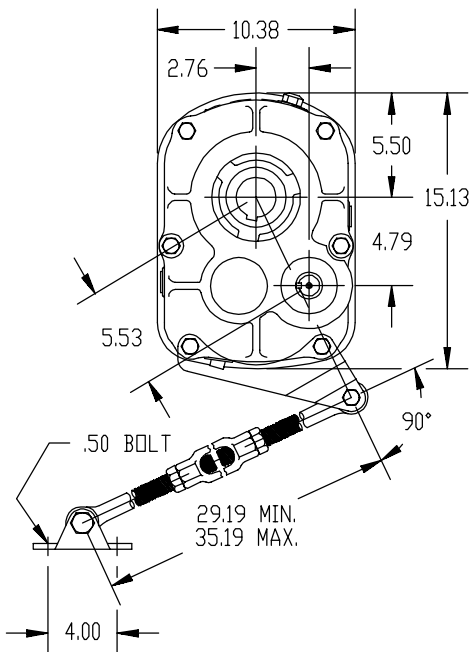


TORQUE-ARM Shaft Mount Speed Reducers

TXT4A - DOUBLE REDUCTION TAPER BUSHED

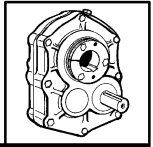


TXT4A - DOUBLE REDUCTION STRAIGHT BORE



NOMENCLATURE PAGES G1-10-G1-11	SELECTION PAGES G1-12-G1-25	MODIFICATIONS/ACCESSORIES PAGES G1-68-G1-80	ENGINEERING/TECHNICAL PAGES G1-187-G1-201
-----------------------------------	--------------------------------	--	--

SELECTION/DIMENSIONS



TORQUE-ARM Shaft Mount Speed Reducers

TXT4A Taper Bushed Reducers ■

Reducer Size	Part Number	AGMA Code	Actual Ratio	Weight
TXT409AT	244525	207D09	9.67	139
TXT415AT	244526	207D15	15.13	139
TXT425AT	244527	207D25	24.38	139
TXT409ATV	244528	207D09	9.67	139
TXT415ATV	244529	207D15	15.13	139
TXT425ATV	244530	207D25	24.38	139

TXT4A Accessories

Description	Part Number	Weight
TA4M Standard Motor Mount (143T-286T)	244391	75
TA4ML Long Motor Mount (143T-286T)	244392	75
TAB4 Bottom Motor Mount (143T-326T) ♠	244404	55
TXT4A Backstop Assembly	244106	1.2
Optional Filter Breather (3/8-18 NPT)	430048	.2
TXT4-D TA Reducer Belt Guard (143T-286T)	244395	54
TXT4-D TA Reducer Belt Guard for Long Motor Mount (143T-286T) ♣	244151	65
TXT4A Cooling Fan Assembly	272594	3
TXT4A Taconite Auxiliary Seal Kit ♥	244676	7.7
TAL4 Long Side Mounting Brackets	244412	9.2
TAS4 Short Side Mounting Brackets	244410	7.9

TXT4A Straight Bore Reducers ■

Reducer Size	Part Number	AGMA Code	Actual Ratio	Weight
TXT409AS	244537 ♣	207D09	9.67	139
TXT415AS	244538	207D15	15.13	139
TXT425AS	244539	207D25	24.38	139
TXT409ASV	244540	207D09	9.67	139
TXT415ASV	244541	207D15	15.13	139
TXT425ASV	244542	207D25	24.38	139

TXT4 Bushing Assemblies ●

Stock Bore Size	Part Number		Shaft Keyseat Required †		Weight	
	Tapered Bushing	Straight Bore Bushing	Tapered Bushing	Straight Bore Bushing	Tapered Bushing	Straight Bore Bushing
2-7/16 (Max.)	244115	◆	5/8 x 5/16 x 9-1/32	5/8 x 5/16 x 3-3/8	5.8	-
2-1/4 ▲	244113	244430	1/2 x 1/4 x 9-1/32	1/2 x 1/4 x 3-3/8	6.3	1.2
2-3/16 ▲	244111	244429	1/2 x 1/4 x 9-1/32	1/2 x 1/4 x 3-3/8	6.7	1.5
2-1/8 ▲	244109	244428	1/2 x 1/4 x 9-1/32	1/2 x 1/4 x 3-3/8	7	2.6
2 ▲	244095	244427	1/2 x 1/4 x 9-1/32	1/2 x 1/4 x 4	7.1	2.6
1-15/16 ▲	244093	244426	1/2 x 1/4 x 9-1/32	1/2 x 1/4 x 4	7.4	3.5
1-3/4 ▲	244087	244424	3/8 x 3/16 x 9-1/32	3/8 x 3/16 x 2-7/16	8	3.6
1-11/16 ▲	244085	244423	3/8 x 3/16 x 9-1/32	3/8 x 3/16 x 2-7/16	8.3	3.6
1-1/2 ▲	244081	244421	3/8 x 3/16 x 9-1/32	3/8 x 3/16 x 2-7/16	8.3	4.1
1-7/16 ▲	244079	244420	3/8 x 3/16 x 9-1/32	3/8 x 3/16 x 2-7/16	8.8	4.1

♣ Made to order.

† Shaft key furnished.

▲ Check the driven shaft and key for strength.

◆ Preferred bore. No bushing required for this bore size.

♠ DODGE standard belt guards will not fit this motor mount.

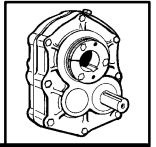
■ See page G1-191 for drill and tap dimensions for Flange Mount TXT Reducers.

● Taper Bushed Reducers require bushing for all bore sizes.

♥ Use with Taper Bushed Reducer only. See page G1-192 for drill and tap information required to mount to reducer.

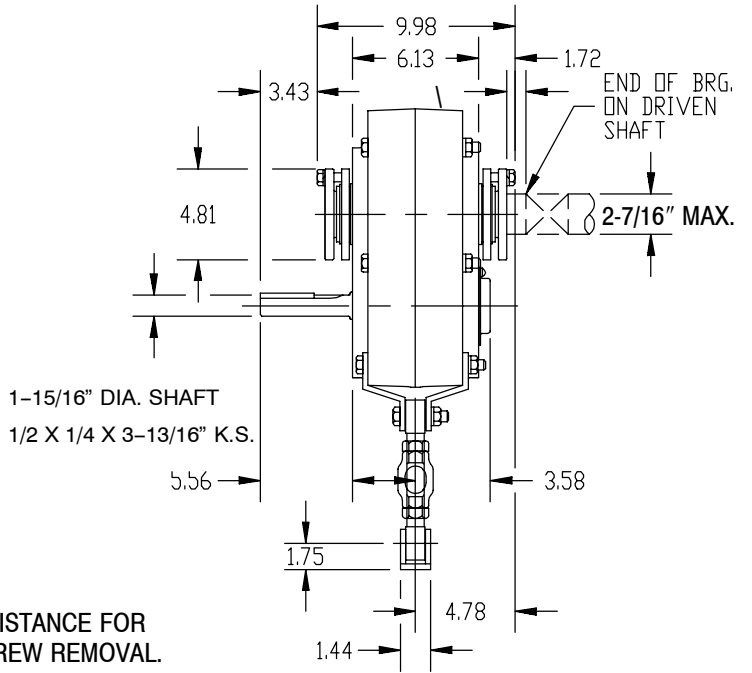
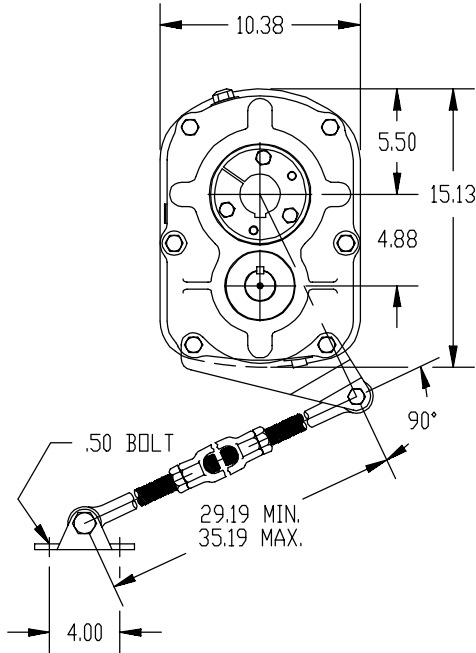
NOMENCLATURE PAGES G1-10-G1-11	SELECTION PAGES G1-12-G1-25	MODIFICATIONS/ACCESSORIES PAGES G1-68-G1-80	ENGINEERING/TECHNICAL PAGES G1-187-G1-201
-----------------------------------	--------------------------------	--	--

SELECTION/DIMENSIONS

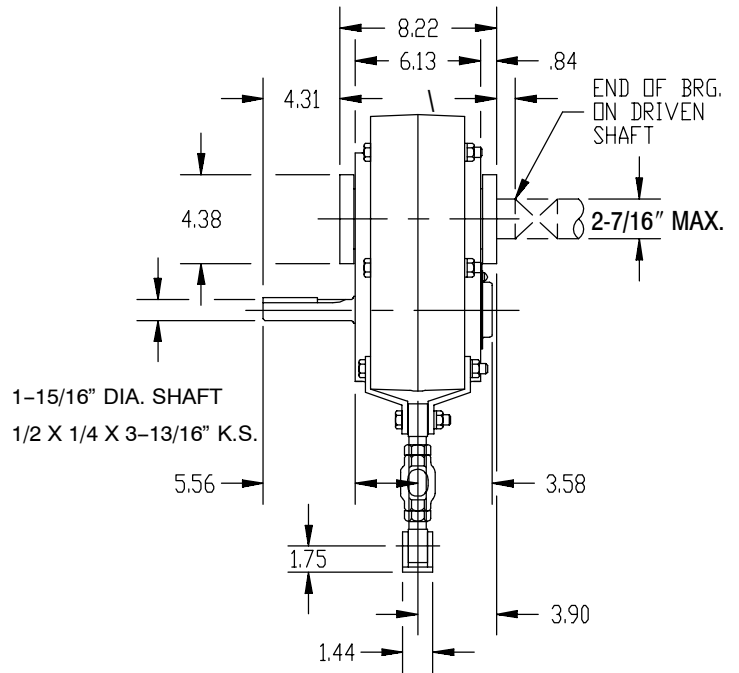
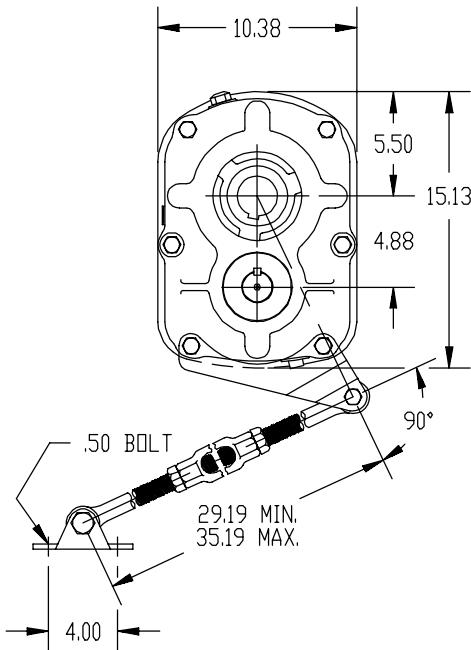


TORQUE-ARM Shaft Mount Speed Reducers

TXT405A - SINGLE REDUCTION TAPER BUSHED

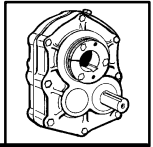


TXT405A - SINGLE REDUCTION STRAIGHT BORE



NOMENCLATURE PAGES G1-10-G1-11	SELECTION PAGES G1-12-G1-25	MODIFICATIONS/ACCESSORIES PAGES G1-68-G1-80	ENGINEERING/TECHNICAL PAGES G1-187-G1-201
-----------------------------------	--------------------------------	--	--

SELECTION/DIMENSIONS



TORQUE-ARM Shaft Mount Speed Reducers

TXT405A Taper Bushed Reducers ■ ○

Reducer Size	Part Number	AGMA Code	Actual Ratio	Weight
TXT405AT	254200	207S05	5.65	122
TXT405ATV	254200	207S05	5.65	122

TXT405A Straight Bore Reducers ■ ○

Reducer Size	Part Number	AGMA Code	Actual Ratio	Weight
TXT405AS	254204	207S05	5.65	122
TXT405ASV	254204	207S05	5.65	122

TXT405A Accessories

Description	Part Number	Weight
TA4M Standard Motor Mount (143T-286T)	244391	75
TA4ML Long Motor Mount (143T-286T)	244392	75
TAB4 Bottom Motor Mount (143T-326T) ♠	244404	55
TXT405A Backstop Assembly	244148	.9
Optional Filter Breather (3/8-18 NPT)	430048	.2
TXT4-S TA Reducer Belt Guard (143T-286T)	244397	54
TXT4-S TA Reducer Belt Guard for Long Motor Mount (143T-286T) ♣	244164	65
TXT405A Cooling Fan Assembly	254268	3
TXT405A Taconite Auxiliary Seal Kit ♥	254267	7.9
TAL4 Long Side Mounting Brackets	244412	9.2
TAS4 Short Side Mounting Brackets	244410	7.9

TXT4 Bushing Assemblies ●

Stock Bore Size	Part Number		Shaft Keyseat Required †		Weight	
	Tapered Bushing	Straight Bore Bushing	Tapered Bushing	Straight Bore Bushing	Tapered Bushing	Straight Bore Bushing
2-7/16 (Max.)	244115	◆	5/8 x 5/16 x 9-1/32	5/8 x 5/16 x 3-3/8	5.8	—
2-1/4 ▲	244113	244430	1/2 x 1/4 x 9-1/32	1/2 x 1/4 x 3-3/8	6.3	1.2
2-3/16 ▲	244111	244429	1/2 x 1/4 x 9-1/32	1/2 x 1/4 x 3-3/8	6.7	1.5
2-1/8 ▲	244109	244428	1/2 x 1/4 x 9-1/32	1/2 x 1/4 x 3-3/8	7	2.6
2 ▲	244095	244427	1/2 x 1/4 x 9-1/32	1/2 x 1/4 x 4	7.1	2.6
1-15/16 ▲	244093	244426	1/2 x 1/4 x 9-1/32	1/2 x 1/4 x 4	7.4	3.5
1-3/4 ▲	244087	244424	3/8 x 3/16 x 9-1/32	3/8 x 3/16 x 2-7/16	8	3.6
1-11/16 ▲	244085	244423	3/8 x 3/16 x 9-1/32	3/8 x 3/16 x 2-7/16	8.3	3.6
1-1/2 ▲	244081	244421	3/8 x 3/16 x 9-1/32	3/8 x 3/16 x 2-7/16	8.3	4.1
1-7/16 ▲	244079	244420	3/8 x 3/16 x 9-1/32	3/8 x 3/16 x 2-7/16	8.8	4.1

♣ Made to order.

† Shaft key furnished.

▲ Check the driven shaft and key for strength.

◆ Preferred bore. No bushing required for this bore size.

♠ DODGE standard belt guards will not fit this motor mount.

■ See page G1-191 for drill and tap dimensions for Flange Mount TXT Reducers.

● Taper Bushed Reducers require bushing for all bore sizes.

♥ Use with Taper Bushed Reducer only. See page G1-192 for drill and tap information required to mount to reducer.

○ Stock TXT405A Reducers are drilled for vertical mounting.

NOMENCLATURE PAGES G1-10-G1-11	SELECTION PAGES G1-12-G1-25	MODIFICATIONS/ACCESSORIES PAGES G1-68-G1-80	ENGINEERING/TECHNICAL PAGES G1-187-G1-201
-----------------------------------	--------------------------------	--	--