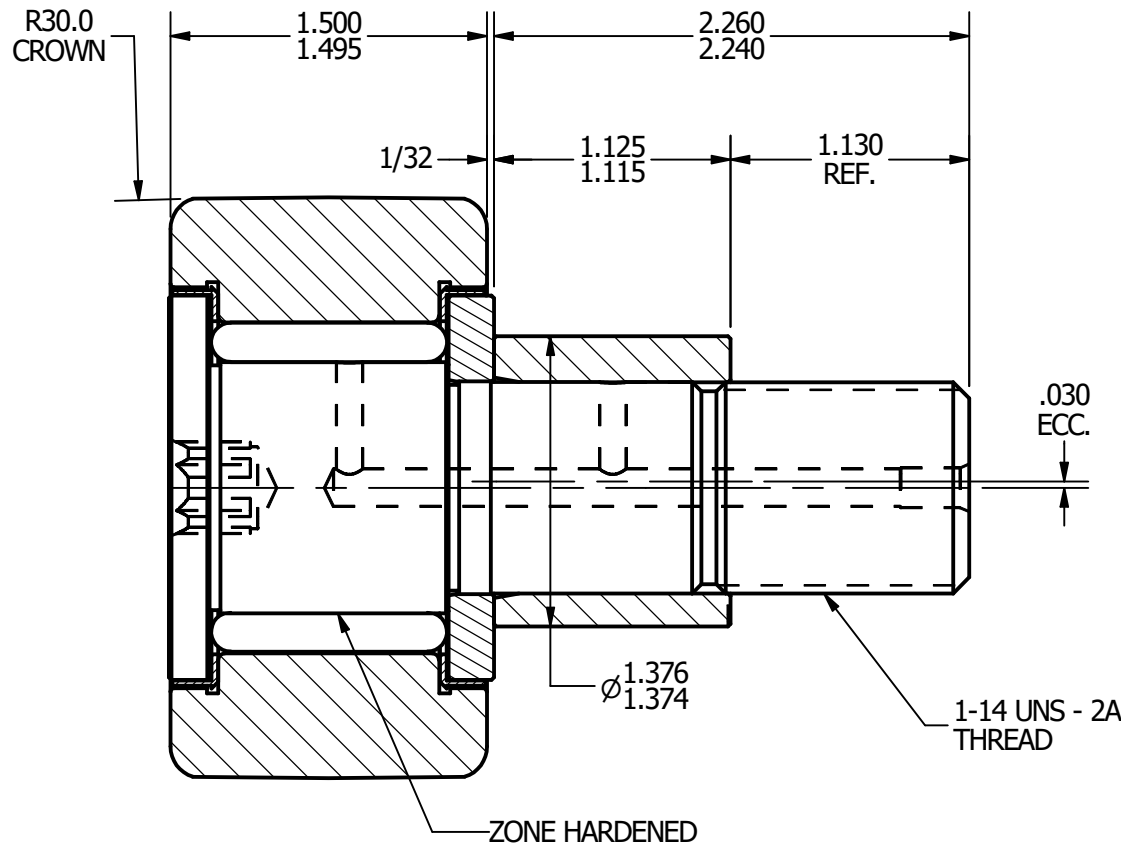
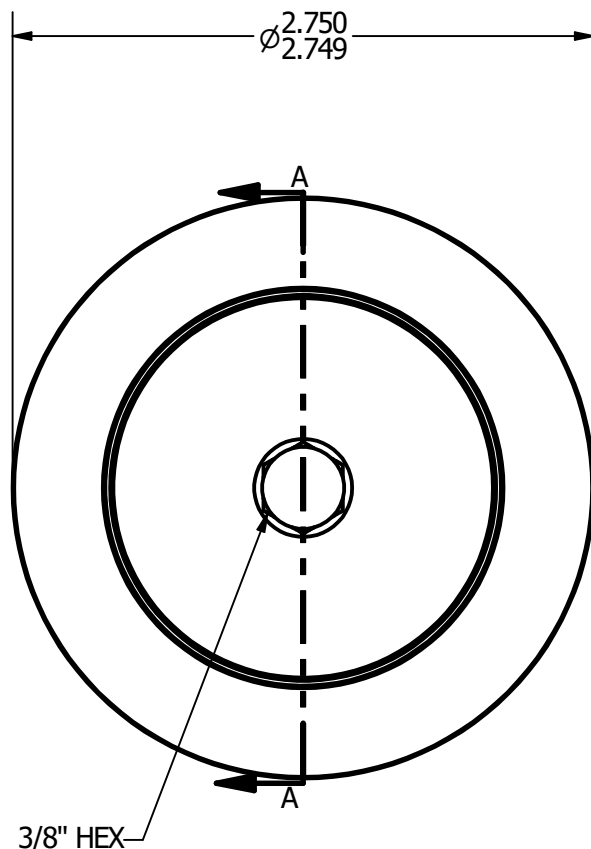
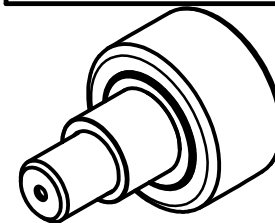


- NOTES:**
1. BEARING IS PACKED WITH GREASE
  2. ALL EXPOSED SURFACES ARE BLACK OXIDED



**RADIAL BASIC DYNAMIC  
RATING (POUNDS) 11,720**

**MAXIMUM STATIC CAPACITY  
(POUNDS) 16,450**

**MATERIAL NOTES:**

**OUTER - BEARING STEEL, HEAT TREATED  
STUD - BEARING STEEL, ZONE HARDENED  
ROLLER - BEARING STEEL, HEAT TREATED  
WASHER - COLD ROLLED STEEL, HEAT TREATED  
ECCENTRIC SLEEVE - COLD ROLLED STEEL  
SEAL - SYNTHETIC**

CUSTOMER PART#

.XX = ± .01  
.XXX = ± .005  
.XXXX = ± .0005  
ANGLES = ± 1°  
INCH [METRIC]

CARTER MANUFACTURING IS  
NOT RESPONSIBLE FOR  
TYPOGRAPHICAL ERRORS

**CARTER MANUFACTURING CO., INC.**

GRAND HAVEN, MICHIGAN 49417

REVISION

PART NAME: ASSEMBLY

SHEET 1 OF 2

CHANGE NOTE:

**A**

AUTHOR. BY

DRAWN BY

CHK'D BY

SALES

MATERIAL

JGV

JAF

JGV

KPR

NOTED

REV. BY

DATE

DATE

DATE

DATE

DRAWING NO.

JAF

7/11/2006

7/11/2006

7/11/2006

7/11/2006

CCNBE-88-SB