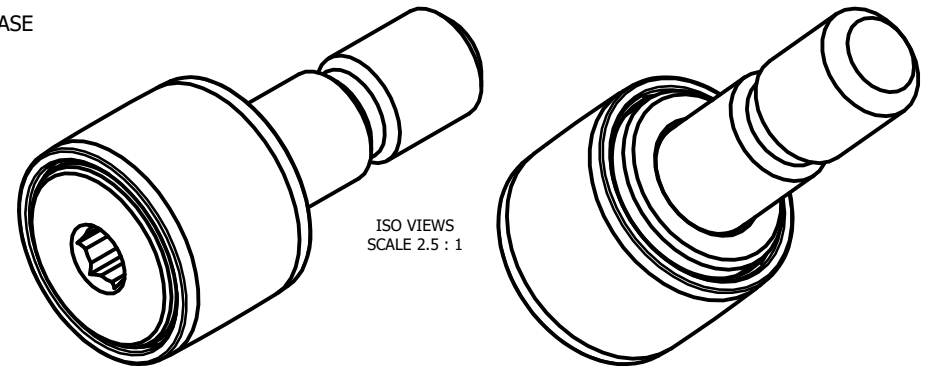
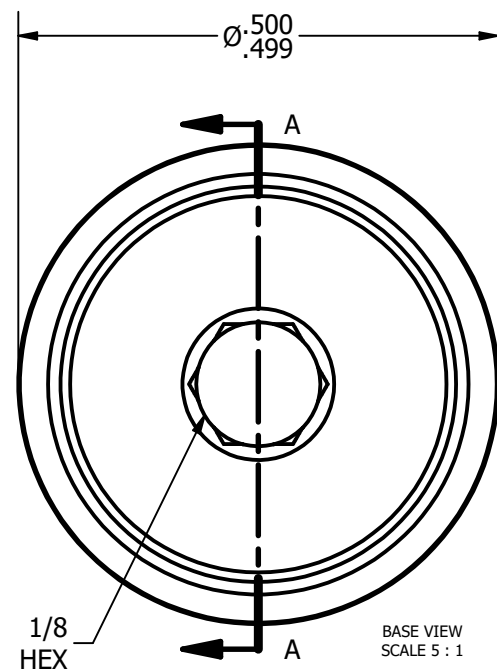


RATING	Lbs
RADIAL BASIC DYNAMIC [C]	680
MAXIMUM STATIC CAPACITY [Co]	1,580

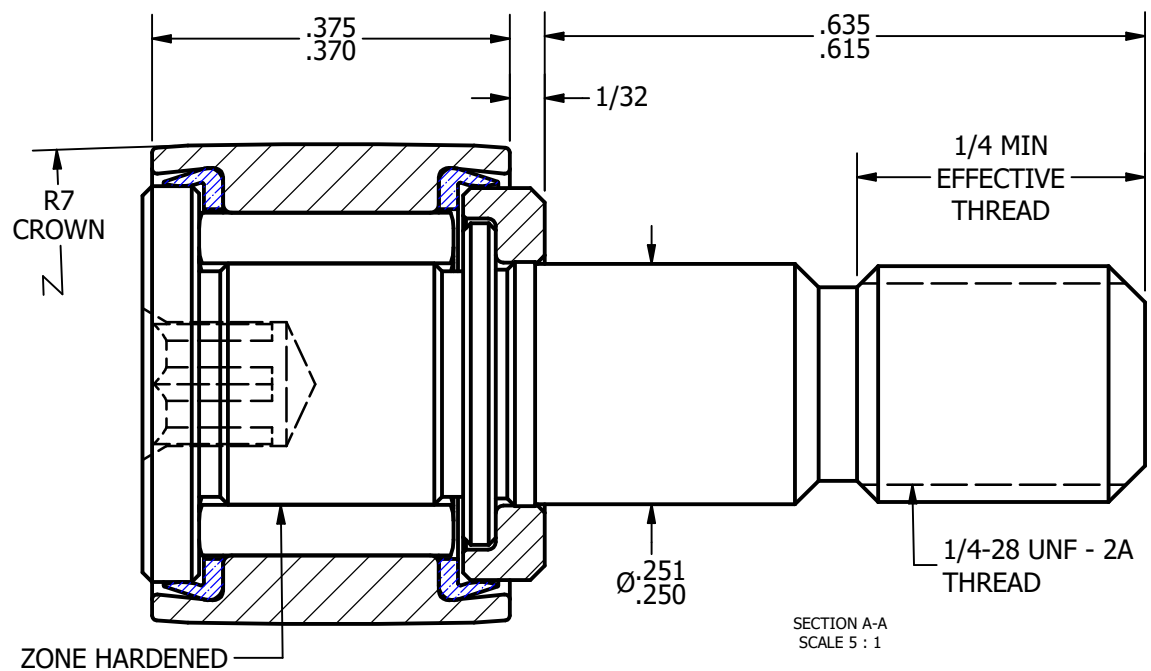
- NOTES:
1. BEARING IS PACKED WITH LITHIUM BASED #2 WEIGHT GREASE
  2. ALL EXPOSED SURFACES HAVE BLACK OXIDE



ISO VIEWS  
SCALE 2.5 : 1



BASE VIEW  
SCALE 5 : 1



SECTION A-A  
SCALE 5 : 1

<b>MATERIAL NOTES:</b>  OUTER RACE - BEARING STEEL, HEAT TREATED STUD - BEARING STEEL, ZONE HARDENED NEEDLE ROLLER - BEARING STEEL, HEAT TREATED WASHER - COLD ROLLED STEEL, HEAT TREATED SEAL - SYNTHETIC	CUSTOMER PART#	.XX = ± .01 .XXX = ± .005 .XXXX = ± .0005 ANGLES = ± 1° INCH [METRIC] FRACTION = ± 1/32	CARTER MANUFACTURING IS NOT RESPONSIBLE FOR TYPOGRAPHICAL ERRORS		<b>CARTER MANUFACTURING CO., INC.</b> GRAND HAVEN, MICHIGAN 49417					
	CHANGE NOTE:	REVISION		PART NAME: <b>ASSEMBLY</b> SHEET 1 OF 2						
		B	AUTHOR. BY	DRAWN BY	CHK'D BY	SALES	MATERIAL			
			DB	JAF	MD	KR	NOTED			
			REV. BY	DATE	DATE	DATE	DATE	DRAWING NO.		
		SGW	2/25/2011	6/13/2006	2/25/2011	3/8/2011	CCNBH-16-SB			