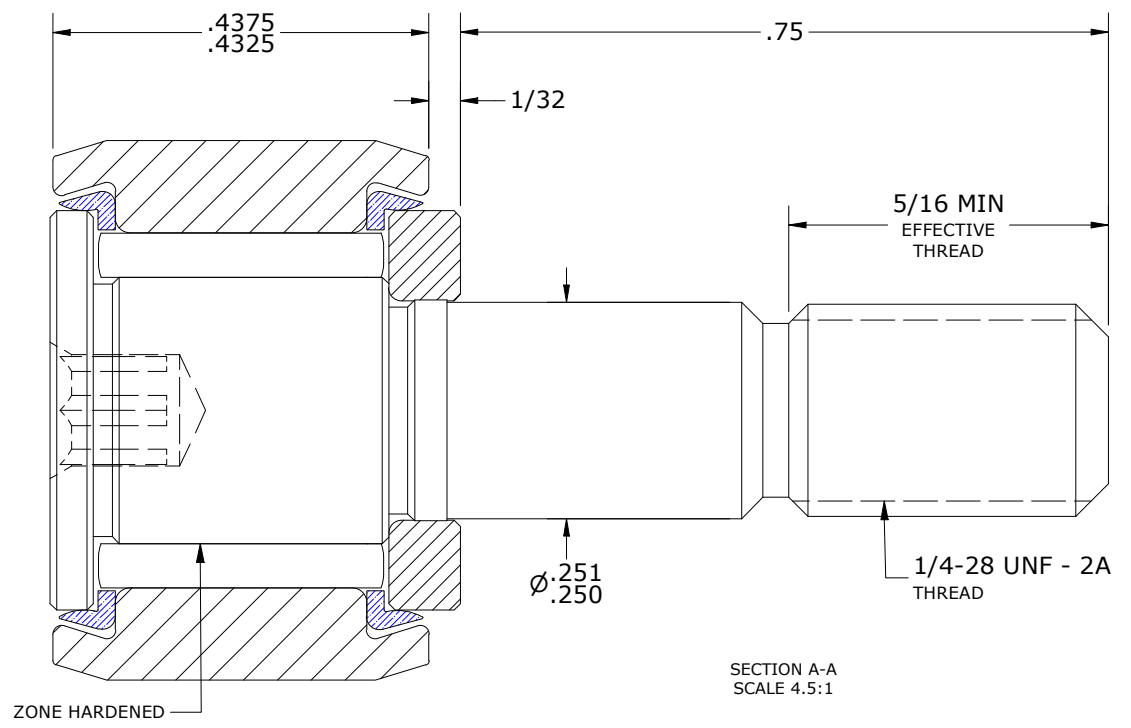
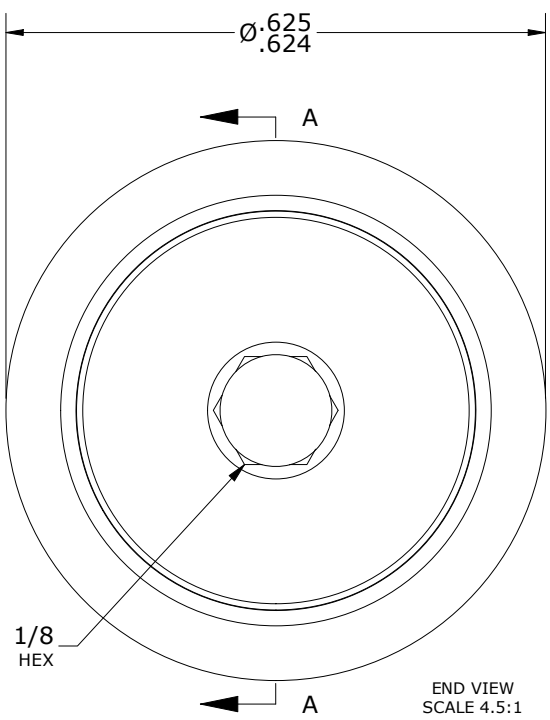
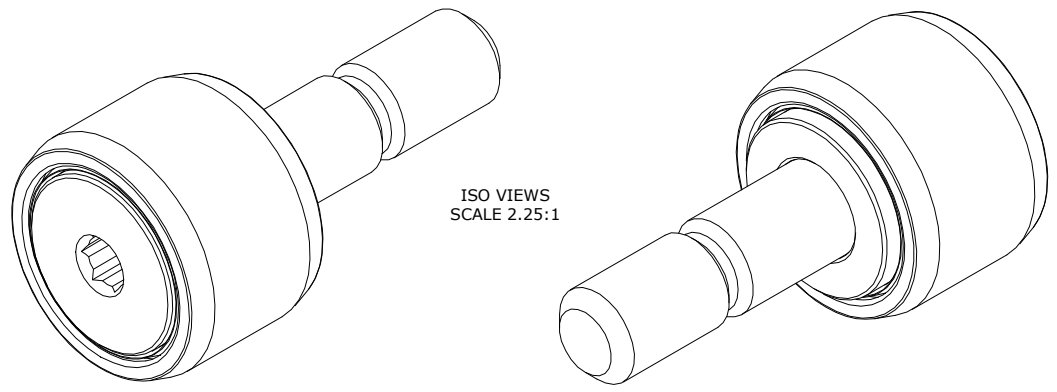


LOAD RATINGS		
RATING	lbf	Newtons
RADIAL BASIC DYNAMIC	860	3,825
MAXIMUM STATIC CAPACITY	600	2,669

- NOTES:
1. BEARING IS PACKED WITH NLGI GRADE 2, LITHIUM BASED GREASE (UNLESS OTHERWISE SPECIFIED).
  2. ALL EXPOSED SURFACES HAVE BLACK OXIDE.
  3. LIMITING SPEED:  
A. GREASE = 9,200 RPM.
  4. CUSTOM LASER ETCHING AVAILABLE UPON REQUEST.

RECOMMENDED MOUNTING HOLE Ø		
Limit	Inch	mm
MIN	.2500	6.3500
MAX	.2505	6.3627

MAXIMUM CLAMPING TORQUE**		
Thread Type	Inch Lbs	Nm
LUBRICATED	17.5	1.98



**MATERIAL NOTES:**  
 OUTER RING - BEARING STEEL, HEAT TREATED  
 STUD - BEARING STEEL, ZONE HARDENED  
 NEEDLE ROLLER(S) - BEARING STEEL, HEAT TREATED  
 WASHER - BEARING STEEL, HEAT TREATED  
 SEAL(S) - SYNTHETIC

CUSTOMER PART#  
 XX = ± .01  
 XXX = ± .005  
 XXXX = ± .0005  
 ANGLES = ± 2'  
 INCH [METRIC]  
 FRACTION = ± 1/64

CARTER MANUFACTURING IS NOT RESPONSIBLE FOR TYPOGRAPHICAL ERRORS

**CARTER MANUFACTURING CO., INC.**  
 GRAND HAVEN, MICHIGAN 49417

ENGINEERING CHANGE ORDER NOTE	
<b>B</b>	
REVISION BY	DATE
SGW	4/11/2014

REVISION		PART NAME: ASSEMBLY			PRODUCT TYPE: CNB	
AUTHOR BY	DRAWN BY	CHK'D BY	SALES	MATERIAL		
HG	GJP	MD	KR	NOTED		
DATE	DATE	DATE	DATE	DATE	SHEET	
4/11/2014	12/14/1999	5/11/2014	5/11/2014		1 OF 2	