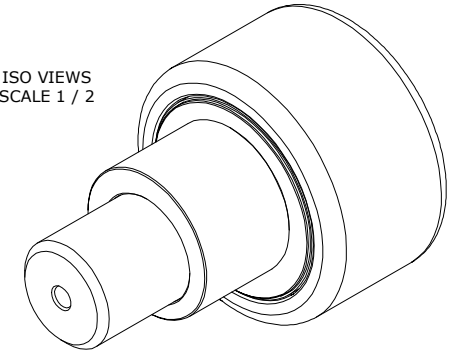
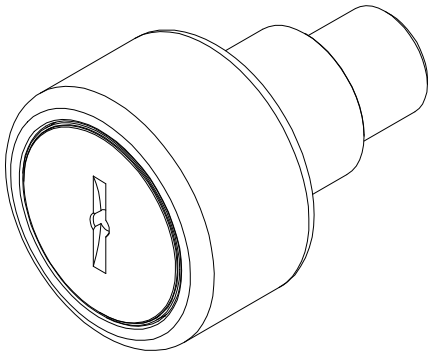


LOAD RATINGS		
RATING	Lbs	Newtons
RADIAL BASIC DYNAMIC	15,720	69,926
MAXIMUM STATIC CAPACITY	24,910	110,805

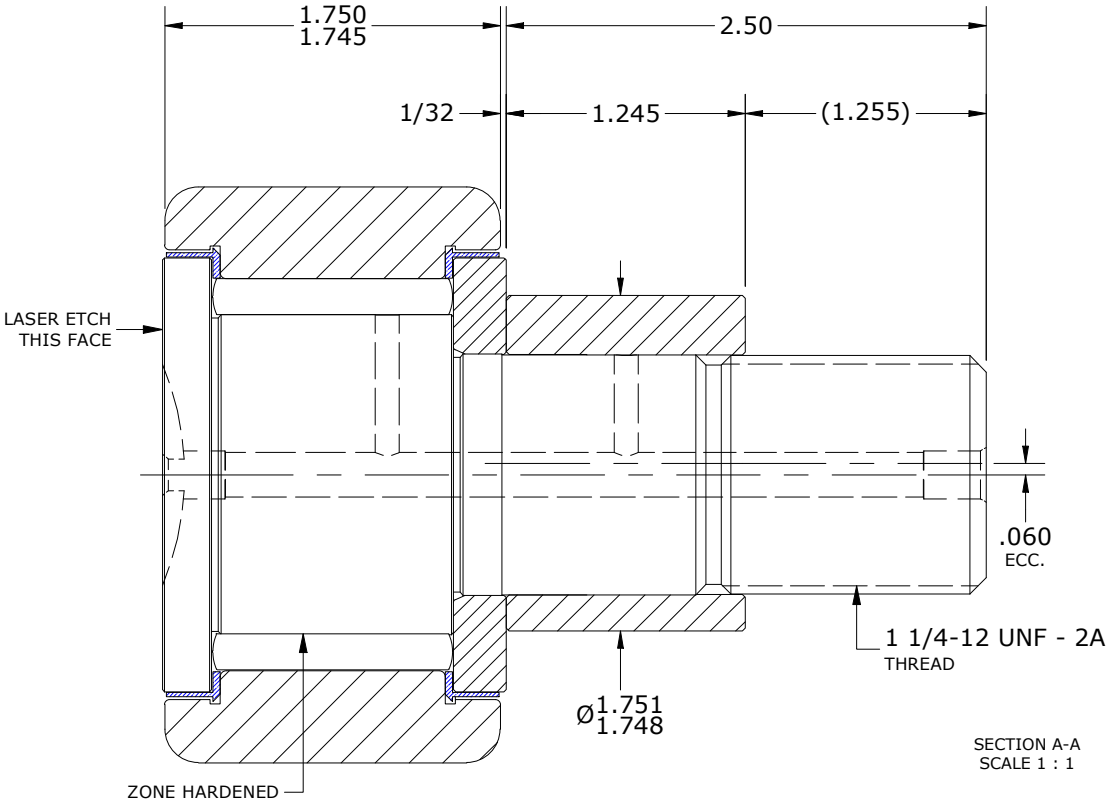
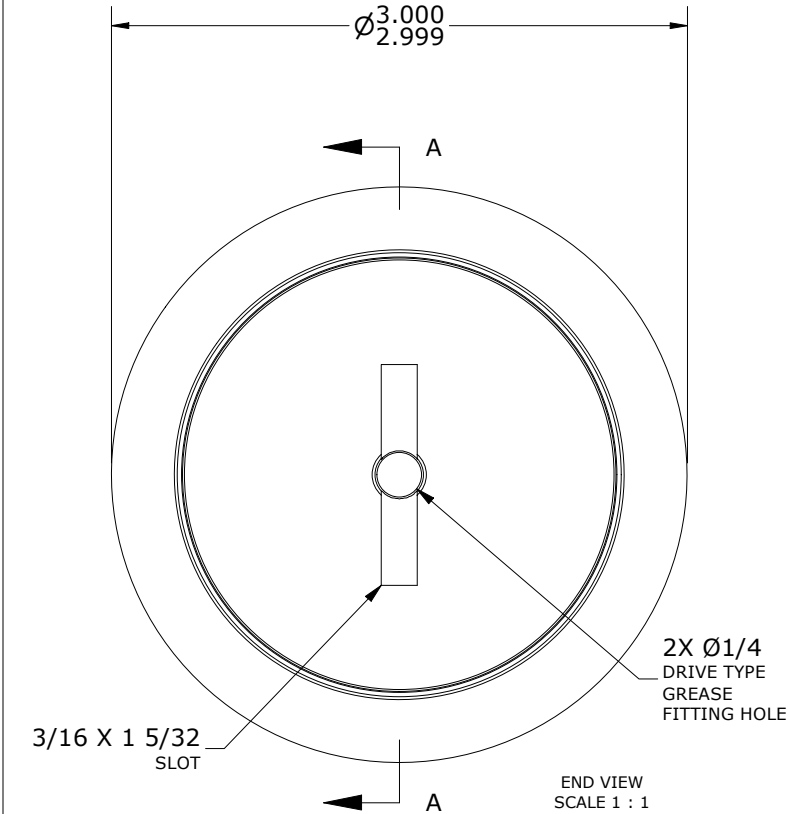
RECOMMENDED MOUNTING HOLE		
LIMIT	Inch	mm
MIN.	1.752	45.5008
MAX.	1.754	44.5516

MAXIMUM CLAMPING TORQUE **		
LIMIT	Inch	mm
Thread Type	Inch lbf	Nm
LUBRICATED	1,725	195

- NOTES:
1. BEARING IS PACKED WITH NLGI GRADE 2, LITHIUM BASED GREASE UNLESS OTHERWISE SPECIFIED
 2. ALL EXPOSED SURFACES HAVE BLACK OXIDE
 3. CUSTOM LASER ETCHING AVAILABLE UPON REQUEST
 4. LIMITING SPEED:
A. GREASE = 950 RPM



ISO VIEWS
SCALE 1 / 2



** TORQUE SPECIFICATION IS BASED ON LUBRICATED THREADS, IF USING CLEAN DRY THREADS DOUBLE TORQUE VALUE

MATERIAL NOTES: OUTER RING - BEARING STEEL, HEAT TREATED STUD - BEARING STEEL, ZONE HARDENED NEEDLE ROLLER(S) - BEARING STEEL, HEAT TREATED WASHER - STEEL, HEAT TREATED SEAL(S) - SYNTHETIC ECCENTRIC SLEEVE - STEEL	CUSTOMER PART#	XX = ± .01 XXX = ± .005 XXXX = ± .0005 ANGLES = ± 2' INCH [METRIC] FRACTION = ± 1/64	CARTER MANUFACTURING IS NOT RESPONSIBLE FOR TYPOGRAPHICAL ERRORS		CARTER MANUFACTURING CO., INC. GRAND HAVEN, MICHIGAN 49417					
			REVISION		PART NAME: Assembly			PRODUCT TYPE: Standard CF		
	ENGINEERING CHANGE ORDER NOTE			C	AUTHOR BY	DRAWN BY	CHK'D BY	SALES	MATERIAL	
					HG	JAF	MD	NC	NOTED	
				REVISION BY	DATE	DATE	DATE	DATE	SHEET	
			SGW	7/11/2022	7/10/2006	7/11/2022	7/11/2022	1 OF 2		