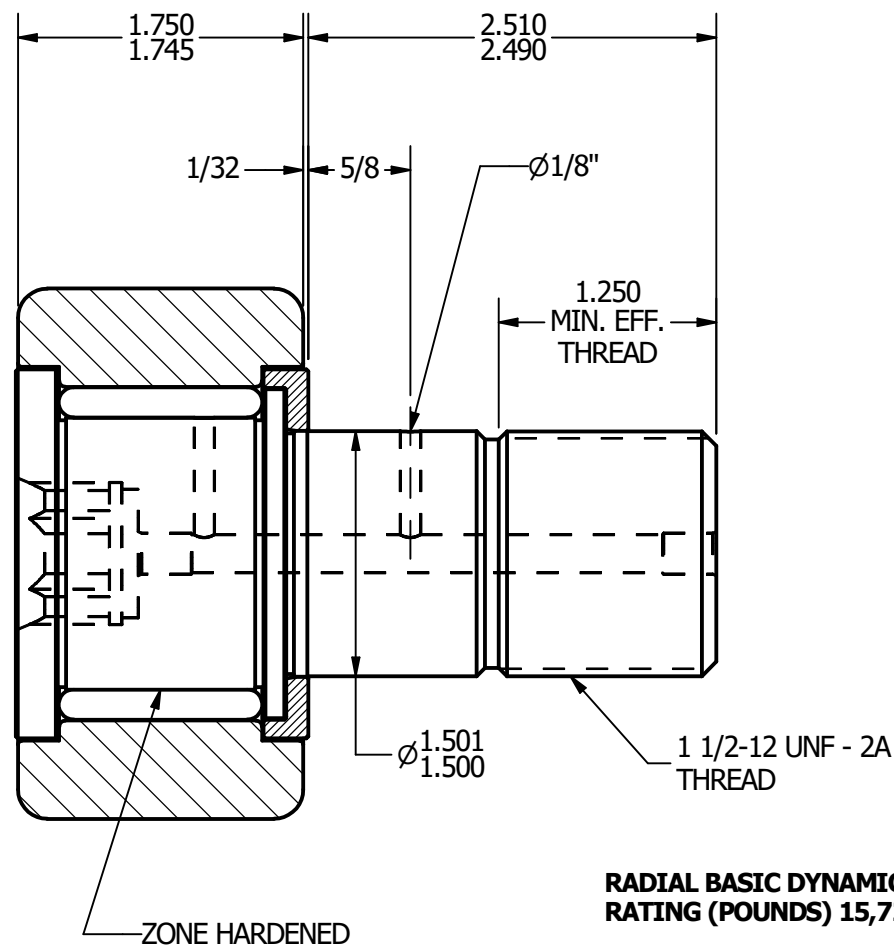
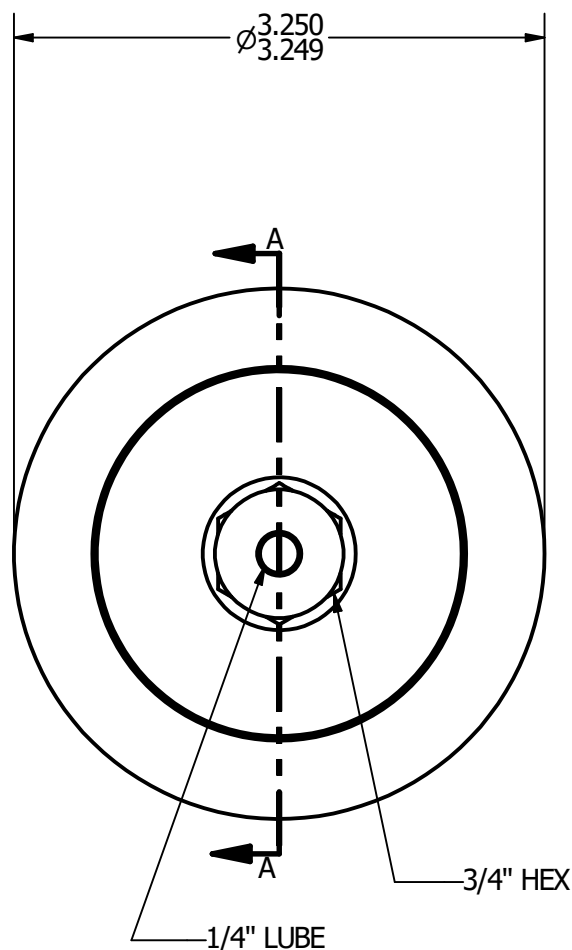
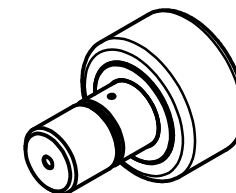


- NOTES:**
1. BEARING IS PACKED WITH GREASE
 2. ALL EXPOSED SURFACES ARE BLACK OXIDED



**RADIAL BASIC DYNAMIC
RATING (POUNDS) 15,720**

**MAXIMUM STATIC CAPACITY
(POUNDS) 49,820**

MATERIAL NOTES:

**OUTER - BEARING STEEL, HEAT TREATED
STUD - BEARING STEEL, ZONE HARDENED
ROLLER - BEARING STEEL, HEAT TREATED
WASHER - COLD ROLLED STEEL, HEAT TREATED**

CUSTOMER PART#

.XX = $\pm .01$
.XXX = $\pm .005$
.XXXX = $\pm .0005$
ANGLES = $\pm 1^\circ$
INCH [METRIC]

CHANGE NOTE:

CARTER MANUFACTURING IS
NOT RESPONSIBLE FOR
TYPOGRAPHICAL ERRORS

REVISION

A

REV. BY

JAF

AUTHOR. BY

JGV

DATE

7/10/2006

CARTER MANUFACTURING CO., INC.

GRAND HAVEN, MICHIGAN 49417

PART NAME: Assembly

SHEET 1 OF 2

| SALES | MATERIAL |
|--------------|--------------------|
| KPR | NOTED |
| DATE | DRAWING NO. |
| 7/10/2006 | CNBH-104-B |