

**LOAD RATINGS**

RATING	lbf	Newtons
RADIAL BASIC DYNAMIC	1,660	7,384
MAXIMUM STATIC CAPACITY	4,130	18,371

MS NO.

NSN NO.

DRAWING NO.

CNBH-28-SB

**RECOMMENDED MOUNTING HOLE Ø**

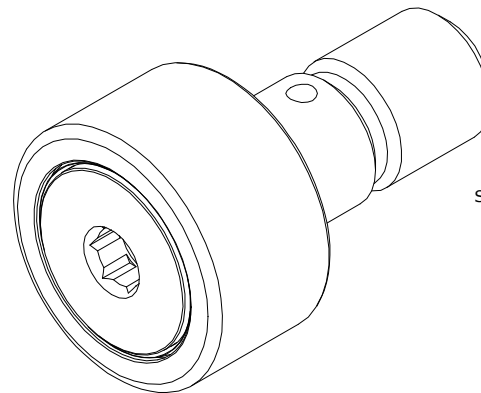
Limit	Inch	mm
MIN	.4375	11.1125
MAX	.4380	11.1252

**NOTES:**

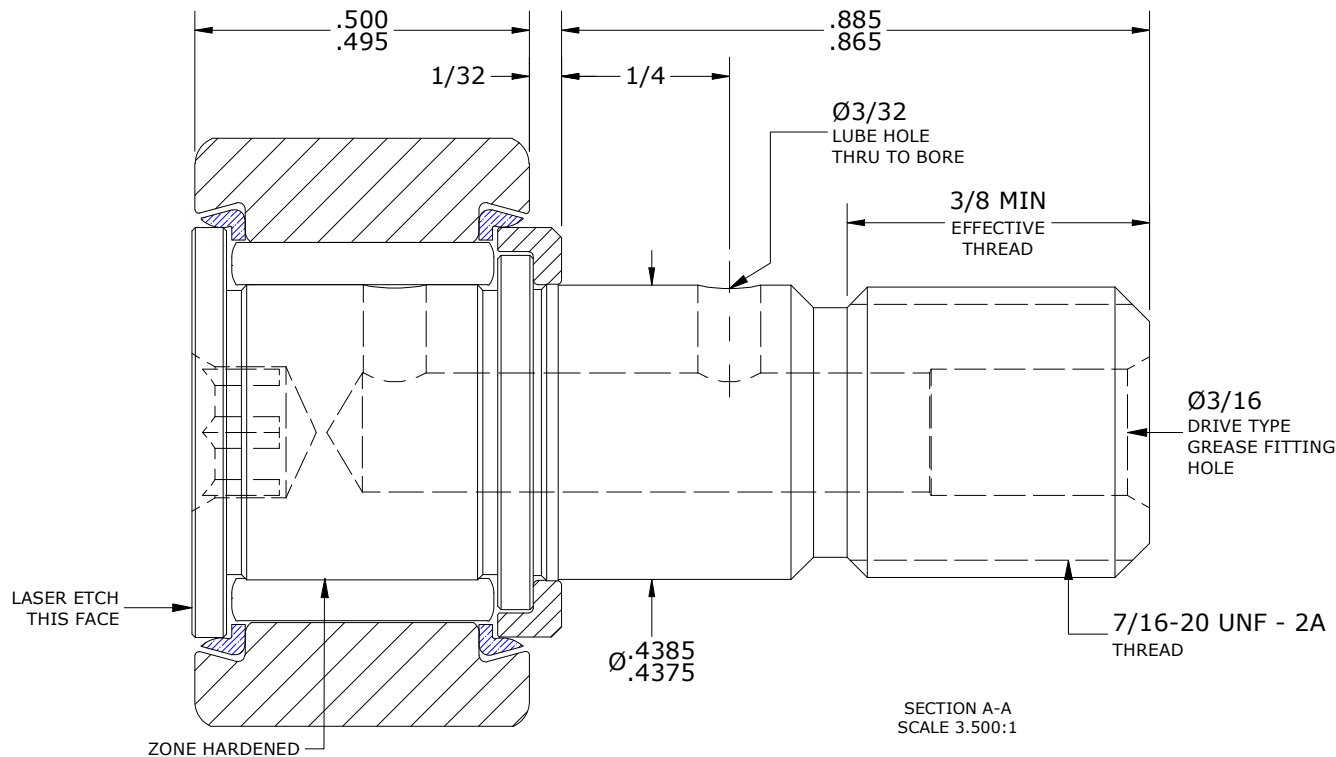
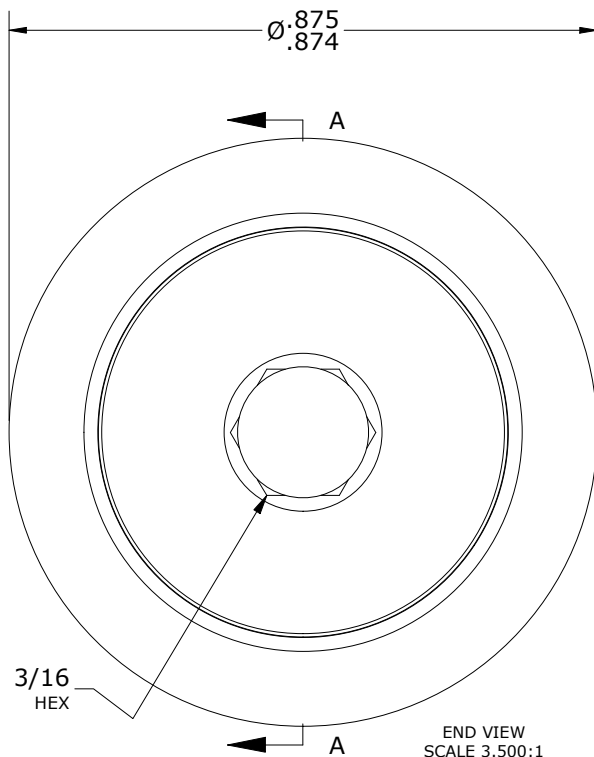
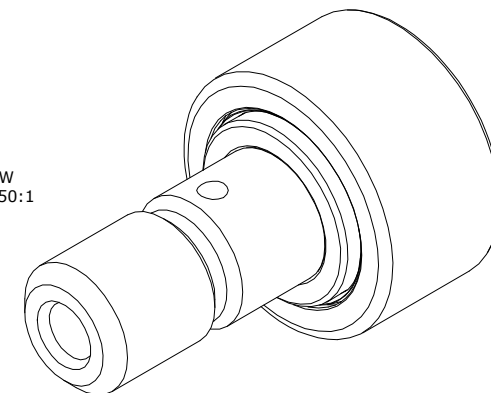
1. BEARING IS PACKED WITH NLGI GRADE 2, LITHIUM BASED GREASE (UNLESS OTHERWISE SPECIFIED)
2. ALL EXPOSED STEEL SURFACES HAVE BLACK OXIDE
3. CUSTOM LASER ETCHING UPON REQUEST
4. LIMITING SPEED:  
A. GREASE = 5,400 RPM

**MAXIMUM CLAMPING TORQUE\*\***

Thread Type	Inch Lbs	Nm
LUBRICATED	125	14.1



ISO VIEW  
SCALE 1.750:1



\*\*TORQUE SPECIFICATION IS BASED ON LUBRICATED THREADS, IF USING DRY THREADS DOUBLE TORQUE VALUE

**MATERIAL NOTES:**

- OUTER RING - BEARING STEEL, HEAT TREATED
- STUD - BEARING STEEL, ZONE HARDENED
- NEEDLE ROLLER(S) - BEARING STEEL, HEAT TREATED
- WASHER - BEARING STEEL, HEAT TREATED
- SEAL(S) - SYNTHETIC

**CUSTOMER PART#**

XX = ± .01  
XXX = ± .005  
XXXX = ± .0005  
ANGLES = ± 1'  
INCH [METRIC]  
FRACTION = ± 1/32

CARTER MANUFACTURING IS NOT RESPONSIBLE FOR TYPOGRAPHICAL ERRORS

**CARTER MANUFACTURING CO., INC.**

GRAND HAVEN, MICHIGAN 49417

**ENGINEERING CHANGE ORDER NOTE**

**REVISION**

PART NAME: ASSEMBLY

PRODUCT TYPE: CNBH

C

AUTHOR BY

DRAWN BY

CHK'D BY

SALES

MATERIAL

HG

GJP

MD

KR

NOTED

REVISION BY

DATE

DATE

DATE

DATE

SHEET

SGW

6/4/2020

11/15/1999

5/29/2020

5/5/2017

1 OF 2