

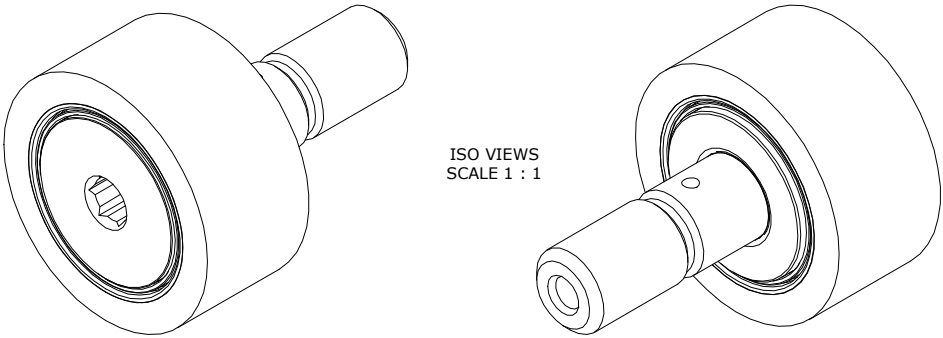
RECOMMENDED MOUNTING HOLE Ø		
Limit	Inch	mm
MIN	.5000	12.7000
MAX	.5005	12.7076

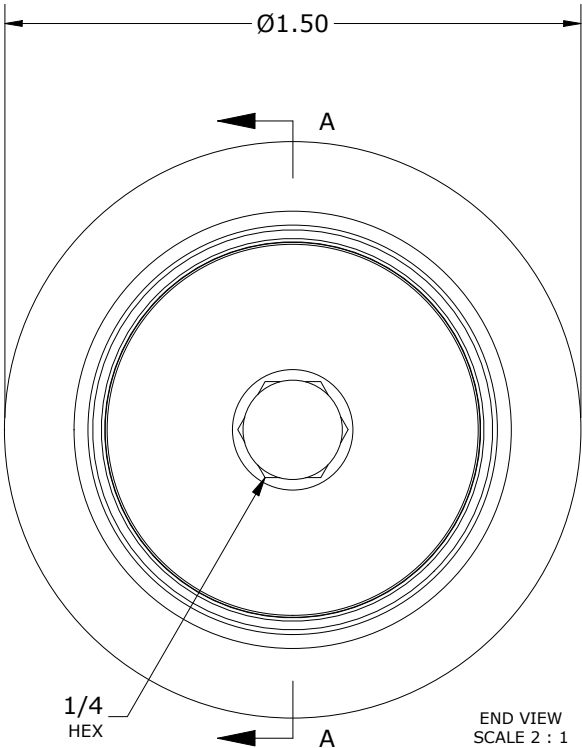
MAXIMUM CLAMPING TORQUE**		
Thread Type	Inch Lbs	Nm
LUBRICATED	175	20

- NOTES:
- BEARING IS PACKED WITH NLGI GRADE 2, LITHIUM BASED GREASE UNLESS OTHERWISE SPECIFIED
  - URETHANE SPECIFICATIONS:
    - DUROMETER = 80 SHORE A
    - COLOR = BLUE
  - ALL EXPOSED STEEL SURFACES HAVE BLACK OXIDE
  - CUSTOM LASER ETCHING AVAILABLE UPON REQUEST

MS NO.	NSN NO.	DRAWING NO.	CRT-48-SB
--------	---------	-------------	-----------

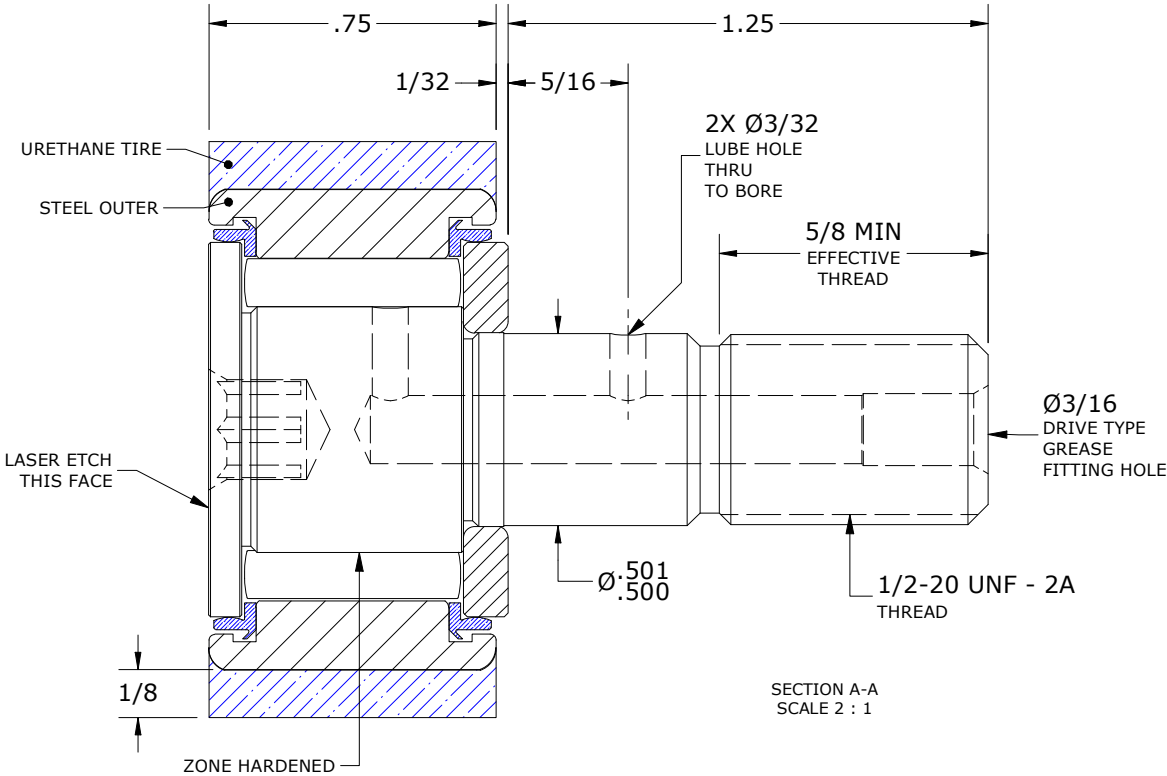


ISO VIEWS  
SCALE 1 : 1



1/4  
HEX

END VIEW  
SCALE 2 : 1



SECTION A-A  
SCALE 2 : 1

\*\*TORQUE SPECIFICATION IS BASED ON LUBRICATED THREADS, IF USING DRY THREADS DOUBLE TORQUE VALUE

MATERIAL NOTES:  OUTER RING - BEARING STEEL, HEAT TREATED TIRE - URETHANE STUD - BEARING STEEL, ZONE HARDENED NEEDLE ROLLER(S) - BEARING STEEL, HEAT TREATED WASHER - BEARING STEEL, HEAT TREATED SEAL(S) - SYNTHETIC	CUSTOMER PART#	XX = ± .01 XXX = ± .005 XXXX = ± .0005 ANGLES = ± 1' INCH [METRIC] FRACTION = ± 1/32	CARTER MANUFACTURING IS NOT RESPONSIBLE FOR TYPOGRAPHICAL ERRORS		<b>CARTER MANUFACTURING CO., INC.</b> GRAND HAVEN, MICHIGAN 49417			
	ENGINEERING CHANGE ORDER NOTE		REVISION		PART NAME: ASSEMBLY		PRODUCT TYPE: CRT	
			C	AUTHOR BY HG	DRAWN BY SGW	CHK'D BY MD	SALES SC	MATERIAL NOTED
			REVISION BY SGW	DATE 7/20/2020	DATE 10/9/2007	DATE 7/20/2020	DATE 11/19/2008	SHEET 1 OF 2