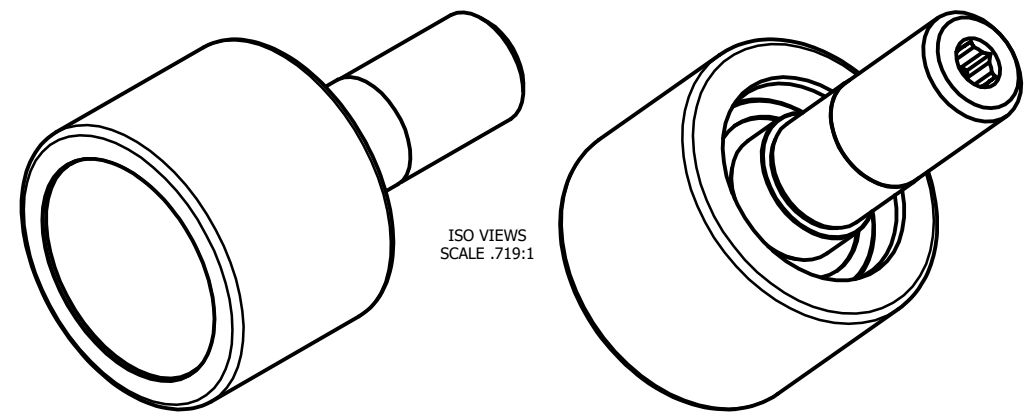
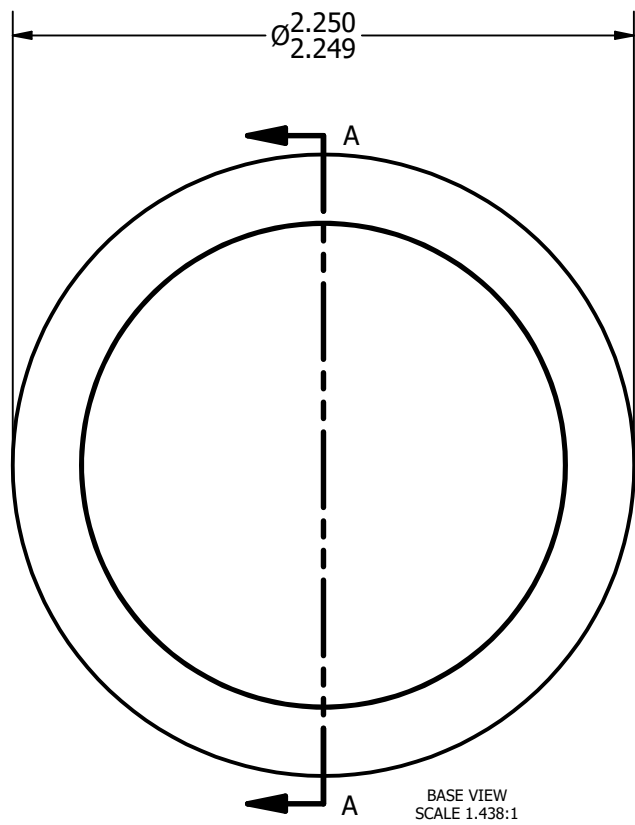


LOAD RATINGS	
RATING	Lbs
RADIAL BASIC DYNAMIC	3,890
DYNAMIC THRUST LOAD	1,000
MAXIMUM STATIC CAPACITY	2,000

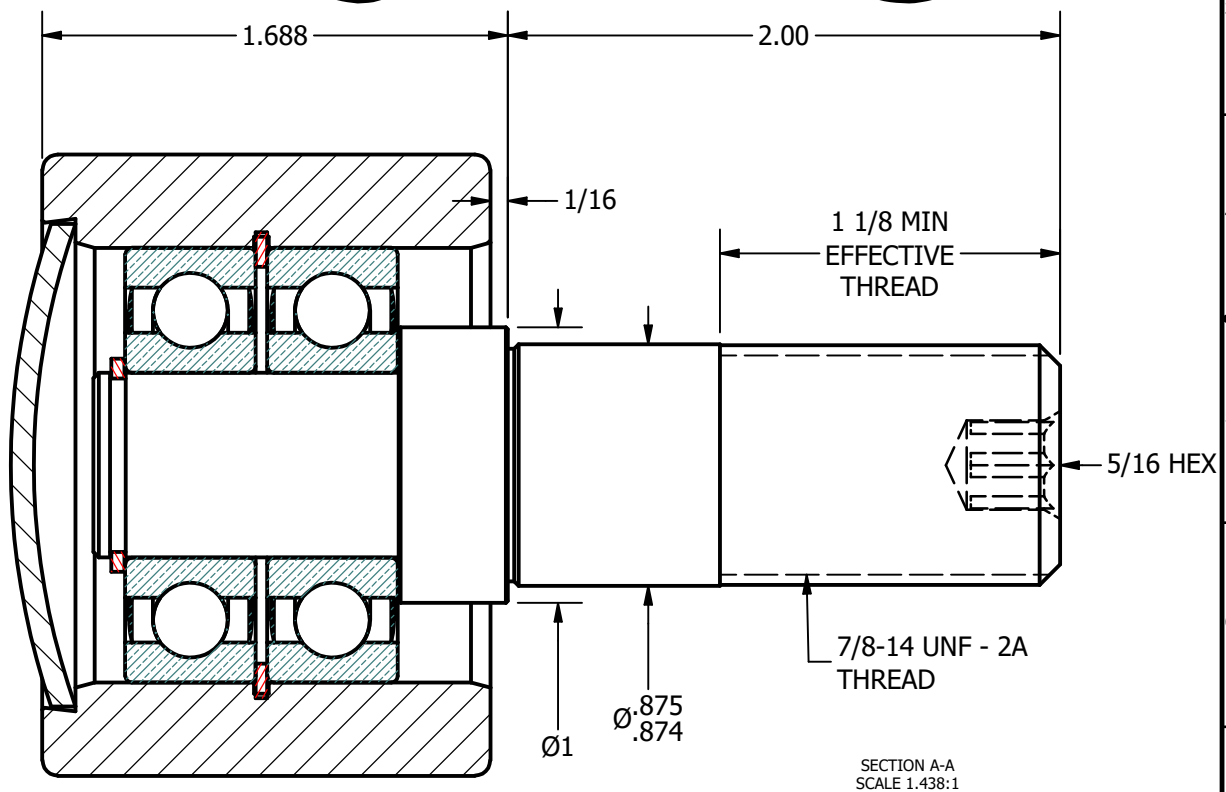
NOTES:
 1. BALL BEARINGS COME PRE-PACKED WITH GREASE



ISO VIEWS
 SCALE .719:1



BASE VIEW
 SCALE 1.438:1



SECTION A-A
 SCALE 1.438:1

MATERIAL NOTES:
 OUTER - BEARING STEEL, HEAT TREATED
 STUD - STRESSPROOF
 BEARING ASSY. - 6203.2RS
 RETAINING RINGS - SPRING STEEL
 END CAP - COLD ROLLED STEEL

CUSTOMER PART#	.XX = ± .01 .XXX = ± .005 .XXXX = ± .0005 ANGLES = ± 1° INCH [METRIC]
CHANGE NOTE:	

CARTER MANUFACTURING IS NOT RESPONSIBLE FOR TYPOGRAPHICAL ERRORS	
REVISION	
B	AUTHOR. BY DB
REV. BY MD	DATE 12/3/2009

CARTER MANUFACTURING CO., INC.					
GRAND HAVEN, MICHIGAN 49417					
PART NAME: ASSEMBLY			SHEET 1 OF 2		
	AUTHOR. BY	DRAWN BY	CHK'D BY	SALES	MATERIAL
	DB	RAM	SGW	KR	NOTED
	DATE	DATE	DATE	DATE	DRAWING NO.
	12/3/2009	12/31/1996	12/3/2009	12/3/2009	PHR-225-A