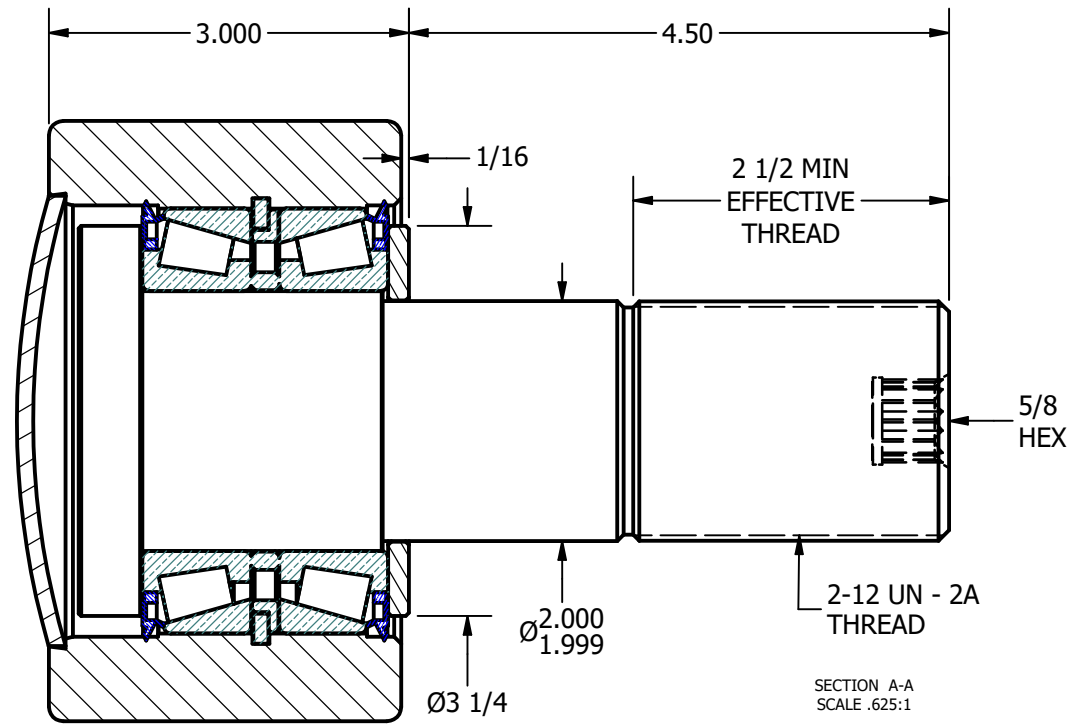
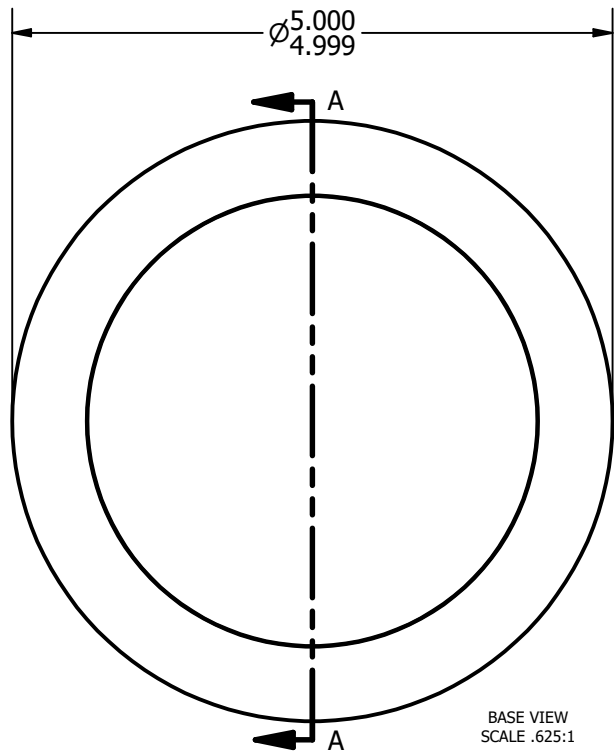
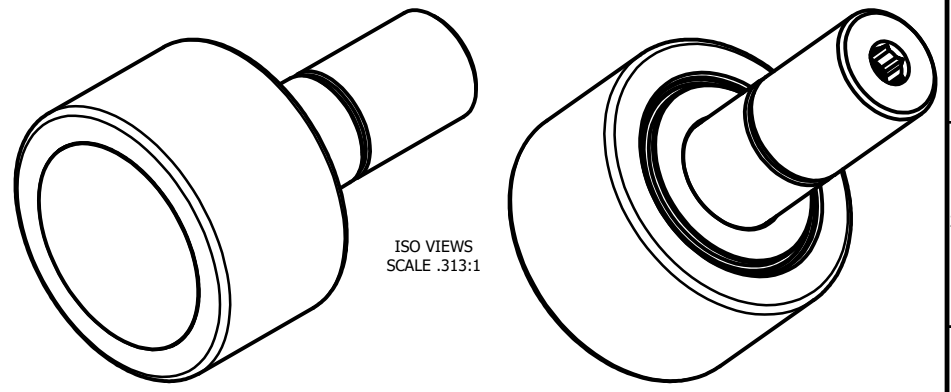


LOAD RATINGS	
RATING	Lbs
RADIAL BASIC DYNAMIC	33,890
DYNAMIC THRUST LOAD	12,500
MAXIMUM STATIC CAPACITY	50,900

NOTES:
 1. BEARING IS PACKED WITH LITHIUM BASED #2 WEIGHT GREASE



MATERIAL NOTES:
 OUTER - BEARING STEEL, HEAT TREATED
 STUD - STRESSPROOF
 WASHER - COLD ROLLED STEEL
 END CAP - COLD ROLLED STEEL
 BEARING ASSY. - JLM-506489-30
 SEALS - SYNTHETIC

CUSTOMER PART#	.XX = ± .01 .XXX = ± .005 .XXXX = ± .0005 ANGLES = ± 1° INCH [METRIC]
CHANGE NOTE:	

CARTER MANUFACTURING IS NOT RESPONSIBLE FOR TYPOGRAPHICAL ERRORS

REVISION	
A	AUTHOR. BY JAB
REV. BY RAM	DATE 6/9/1998

CARTER MANUFACTURING CO., INC.
 GRAND HAVEN, MICHIGAN 49417

PART NAME: ASSEMBLY					SHEET 1 OF 2
SALES	MATERIAL	DATE	DATE	DATE	DATE
KPR	NOTED	6/8/1998	6/4/1998	6/9/1998	6/8/1998
	PHR-500-A				