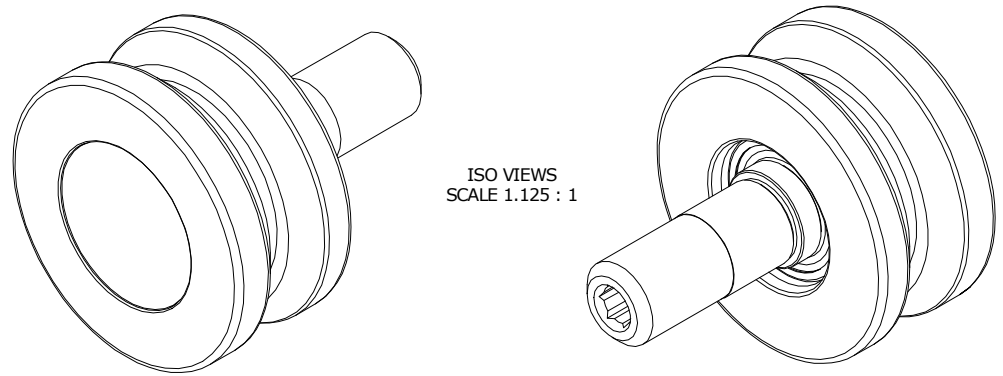


LOAD RATINGS	
RATING	Lbs
RADIAL BASIC DYNAMIC	630
STATIC THRUST LOAD	140
MAXIMUM STATIC CAPACITY	230

NOTES:
 1. BALL BEARINGS COME PRE-PACKED WITH GREASE
 2. OUTER, STUD AND ENCAP HAVE BLACK OXIDE ON ALL EXPOSED SURFACES

MS NO. _____ NSN NO. _____ DRAWING NO. VHR-150-A



ISO VIEWS
SCALE 1.125 : 1

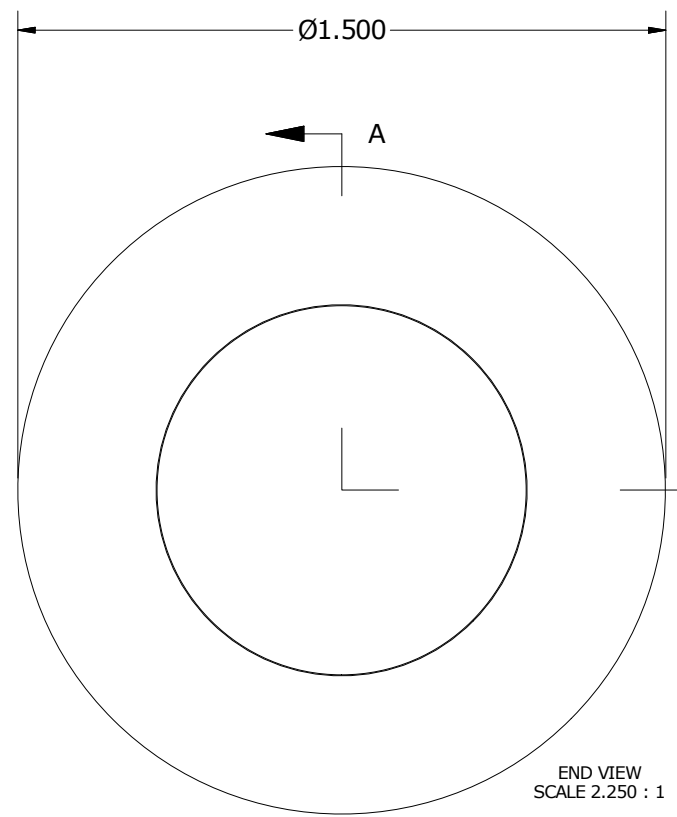
SIGNED DRAWING APPROVAL REQUIRED

PLEASE REVIEW AND VERIFY INFORMATION ON ALL SHEETS & RETURN COPY WITH SIGNED AND DATED APPROVAL, AND/OR REQUIRED CHANGES. CARTER WILL NOT PROCEED WITH ORDER UNTIL APPROVAL IS RECEIVED

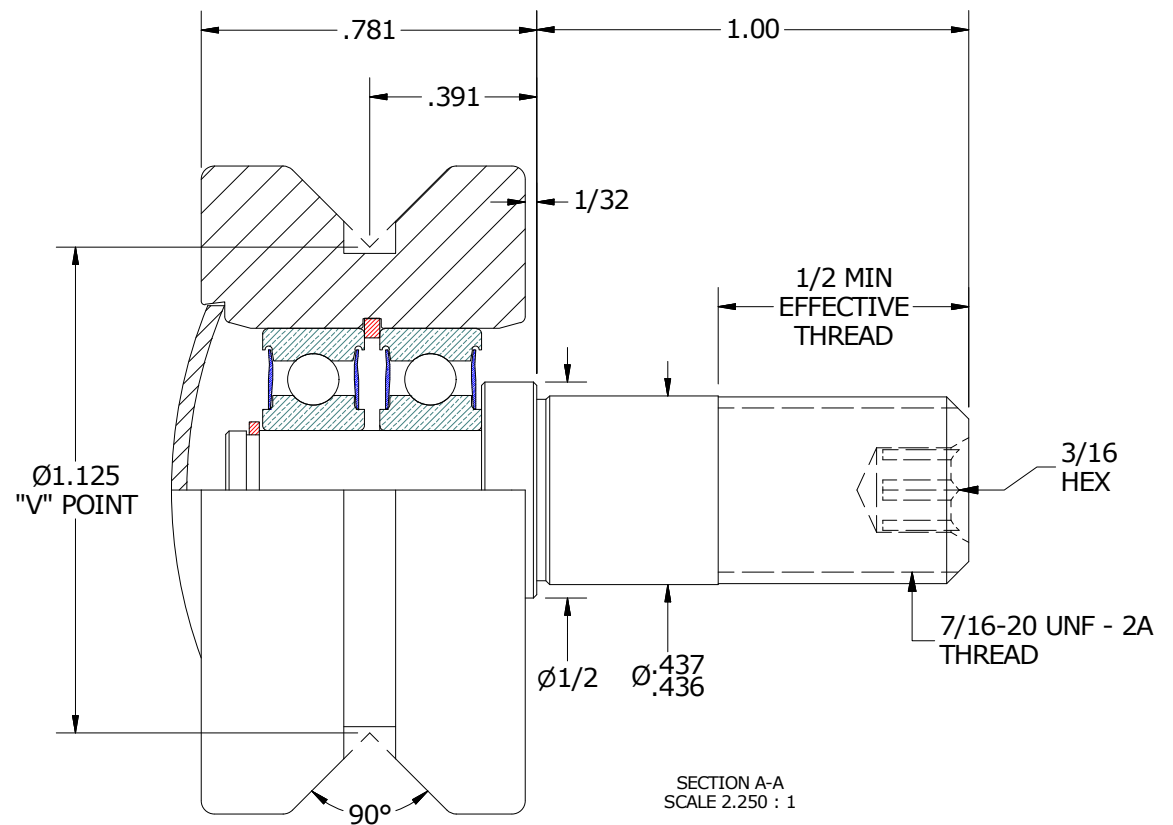
SIGNED

DATE

APPROVED REJECTED



END VIEW
SCALE 2.250 : 1



SECTION A-A
SCALE 2.250 : 1

MATERIAL NOTES:

OUTER HOUSING - BEARING STEEL HEAT TREATED
 STUD - COLD ROLLED STEEL
 END CAP - COLD ROLLED STEEL
 BALL BEARING ASSEMBLIES - 607 2RS
 RETAINING RING - SPRING STEEL

CUSTOMER PART# _____

XX = ± .01
 XXX = ± .005
 XXXX = ± .0005
 ANGLES = ± 1'
 INCH [METRIC]
 FRACTION = ± 1/32

ENGINEERING CHANGE ORDER NOTE

CARTER MANUFACTURING IS NOT RESPONSIBLE FOR TYPOGRAPHICAL ERRORS

REVISION

B

REVISION BY: SGW
 DATE: 10/4/2017

CARTER MANUFACTURING CO., INC.
 GRAND HAVEN, MICHIGAN 49417

PART NAME: ASSEMBLY

DRAWN BY	CHK'D BY	SALES	MATERIAL
SGW	MD	KR	NOTED
DATE	DATE	DATE	SHEET
3/2/2009	10/4/2017	10/4/2017	1 OF 3