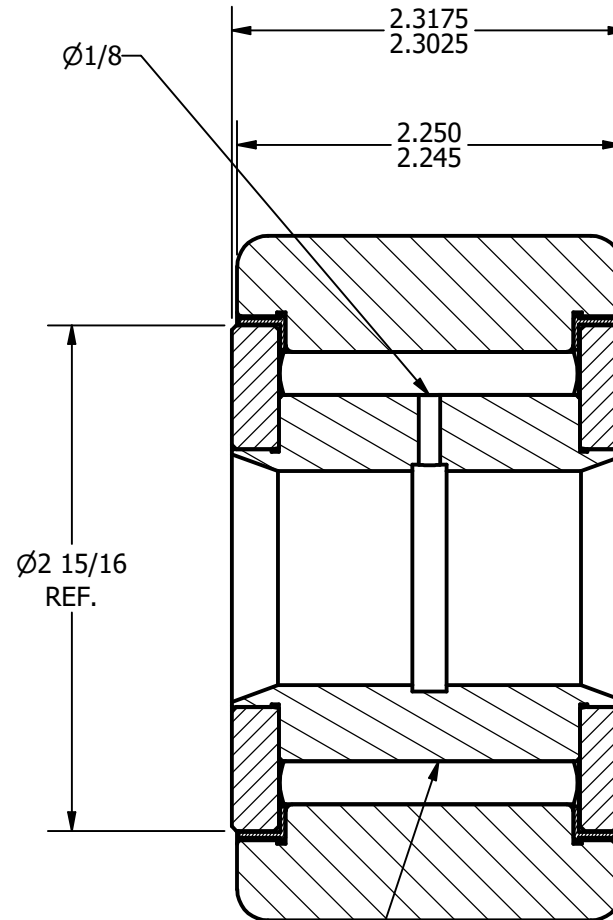
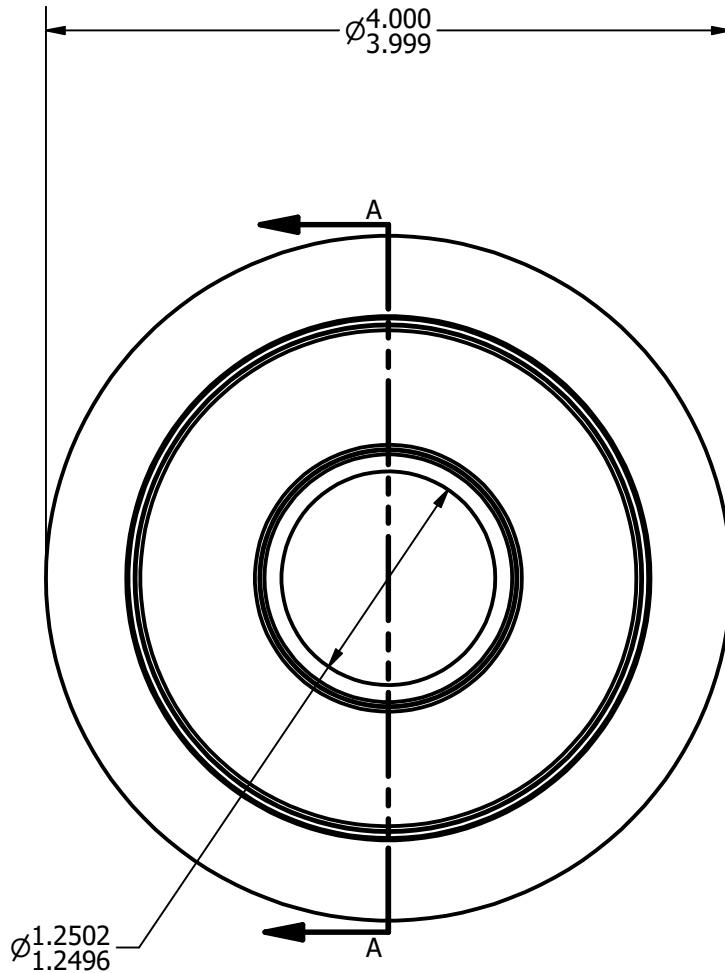
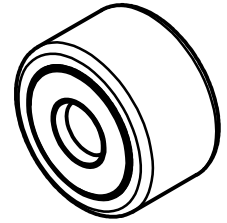


NOTES:

1. BEARING IS PACKED WITH GREASE
2. ALL EXPOSED SURFACES ARE BLACK OXIDED

DRW. NO. **YNB-128-S**



Ø2 15/16
REF.

ZONE HARDENED

**RADIAL BASIC DYNAMIC
RATING (POUNDS) 29,985**

**MAXIMUM STATIC CAPACITY
(POUNDS) 89,540**

MATERIAL NOTES:

**OUTER - BEARING STEEL, HEAT TREATED
STUD - BEARING STEEL, ZONE HARDENED
NEEDLE - BEARING STEEL, HEAT TREATED
WASHER - COLD ROLLED STEEL, HEAT TREATED
SEAL - SYNTHETIC**

CUSTOMER PART#

.XX = ± .01
.XXX = ± .005
.XXXX = ± .0005
ANGLES = ± 1'
INCH [METRIC]

CHANGE NOTE:

CARTER MANUFACTURING IS
NOT RESPONSIBLE FOR
TYPOGRAPHICAL ERRORS

CARTER MANUFACTURING CO., INC.

GRAND HAVEN, MICHIGAN 49417

REVISION

PART NAME: **ASSEMBLY**

SHEET 1 OF 2

A

AUTHOR. BY

DRAWN BY

CHK'D BY

SALES

MATERIAL

RAM

GJP

RAM

KPR

NOTED

REV. BY

DATE

DATE

DATE

DATE

DRAWING NO.

GJP

2/15/2000

2/15/2000

2/15/2000

2/13/2000

YNB-128-S