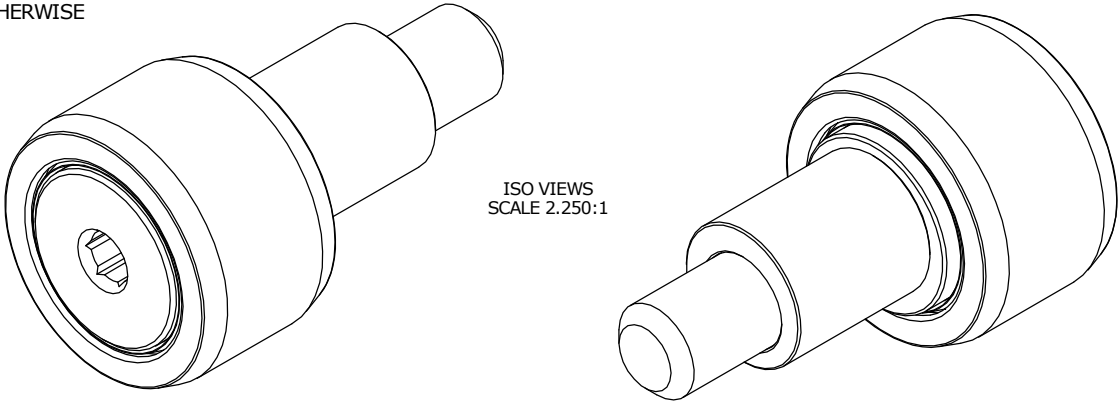


LOAD RATINGS	
RATING	Lbs
RADIAL BASIC DYNAMIC	796
MAXIMUM STATIC CAPACITY	927

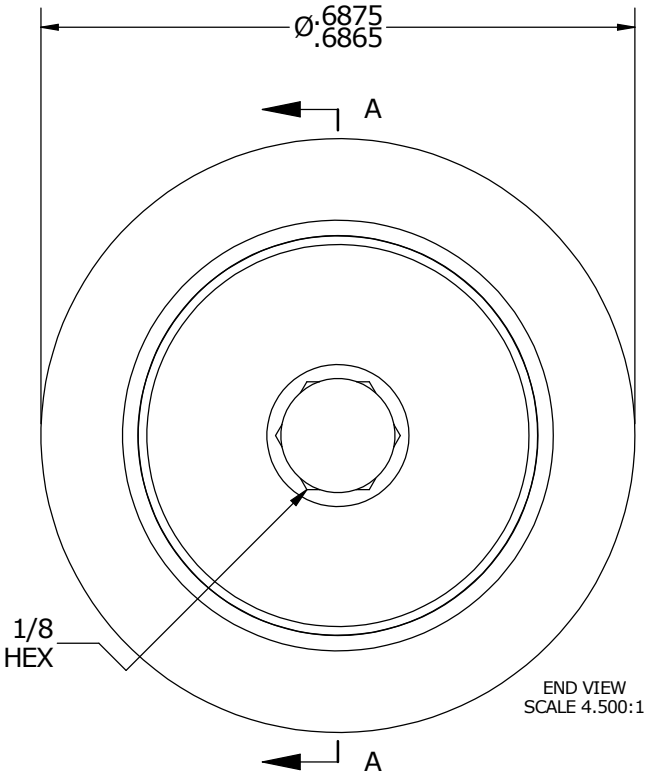
NOTES:

1. BEARING COMES PACKED WITH CARTER STANDARD FOOD GRADE H1, NLGI 2 GREASE(UNLESS OTHERWISE SPECIFIED)

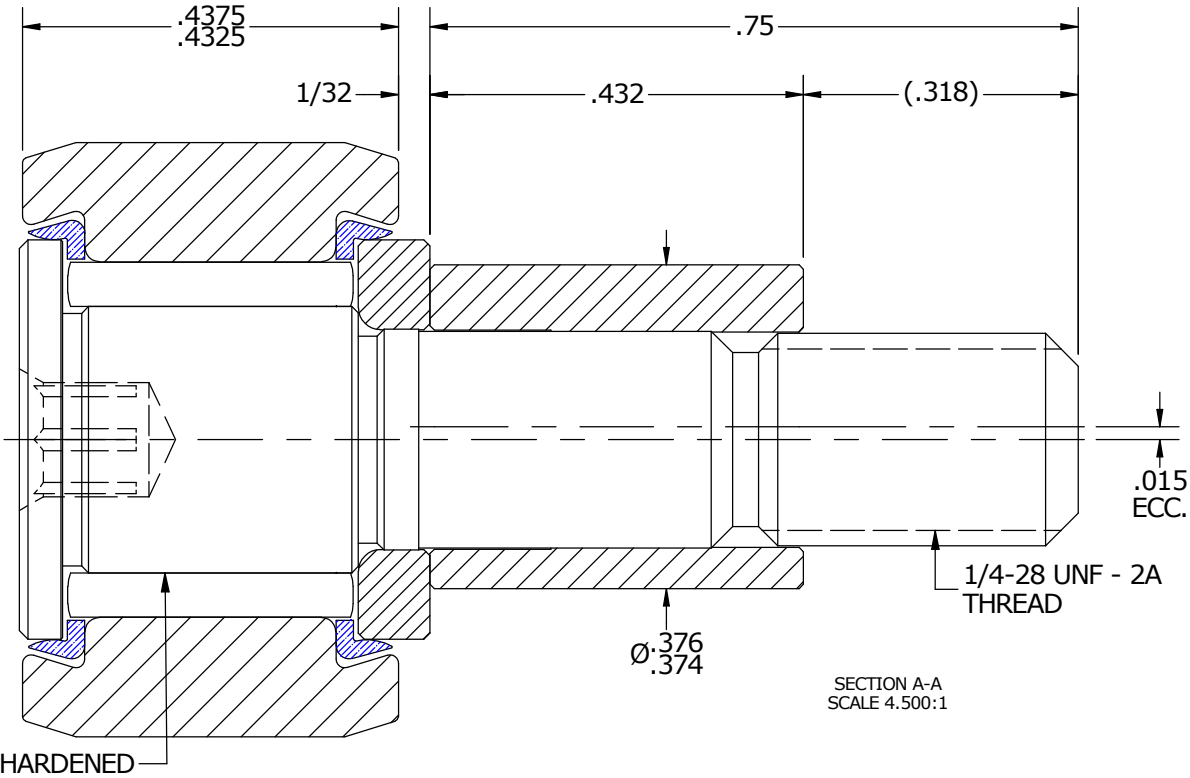
MS NO.	NSN NO.	DRAWING NO.	SCE-22-SB
--------	---------	-------------	-----------



ISO VIEWS  
SCALE 2.250:1



END VIEW  
SCALE 4.500:1



SECTION A-A  
SCALE 4.500:1

MATERIAL NOTES:

OUTER RACE - 440C STAINLESS STEEL, HEAT TREATED  
 STUD - 440C STAINLESS STEEL, ZONE HARDENED  
 WASHER - 440C STAINLESS STEEL, HEAT TREATED  
 NEEDLE ROLLER - 440C STAINLESS STEEL, HEAT TREATED  
 ECCENTRIC SLEEVE - 300 SERIES STAINLESS STEEL  
 SEAL - SYNTHETIC

CUSTOMER PART#

XX = ± .01  
 XXX = ± .005  
 XXXX = ± .0005  
 ANGLES = ± 1°  
 INCH [METRIC]  
 FRACTION = ± 1/32

CARTER MANUFACTURING IS  
 NOT RESPONSIBLE FOR  
 TYPOGRAPHICAL ERRORS

**CARTER MANUFACTURING CO., INC.**  
 GRAND HAVEN, MICHIGAN 49417

ENGINEERING CHANGE ORDER NOTE

REVISION

B

AUTHOR BY  
 HG

REVISION BY  
 SGW

DATE  
 1/29/2015

PART NAME: ASSEMBLY

DRAWN BY  
 EMD

DATE  
 7/26/2006

CHK'D BY  
 MD

DATE  
 1/23/2015

SALES  
 KR

DATE  
 1/29/2015

MATERIAL  
 NOTED

SHEET  
 1 OF 2