

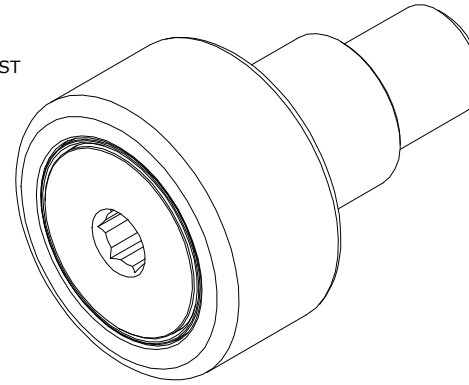
LOAD RATINGS		
RATING	lbf	Newtons
RADIAL BASIC DYNAMIC	4,350	19,350
MAXIMUM STATIC CAPACITY	4,000	17,793

RECOMMENDED MOUNTING HOLE Ø		
Limit	Inch	mm
MIN	.877	22.279
MAX	.879	22.327

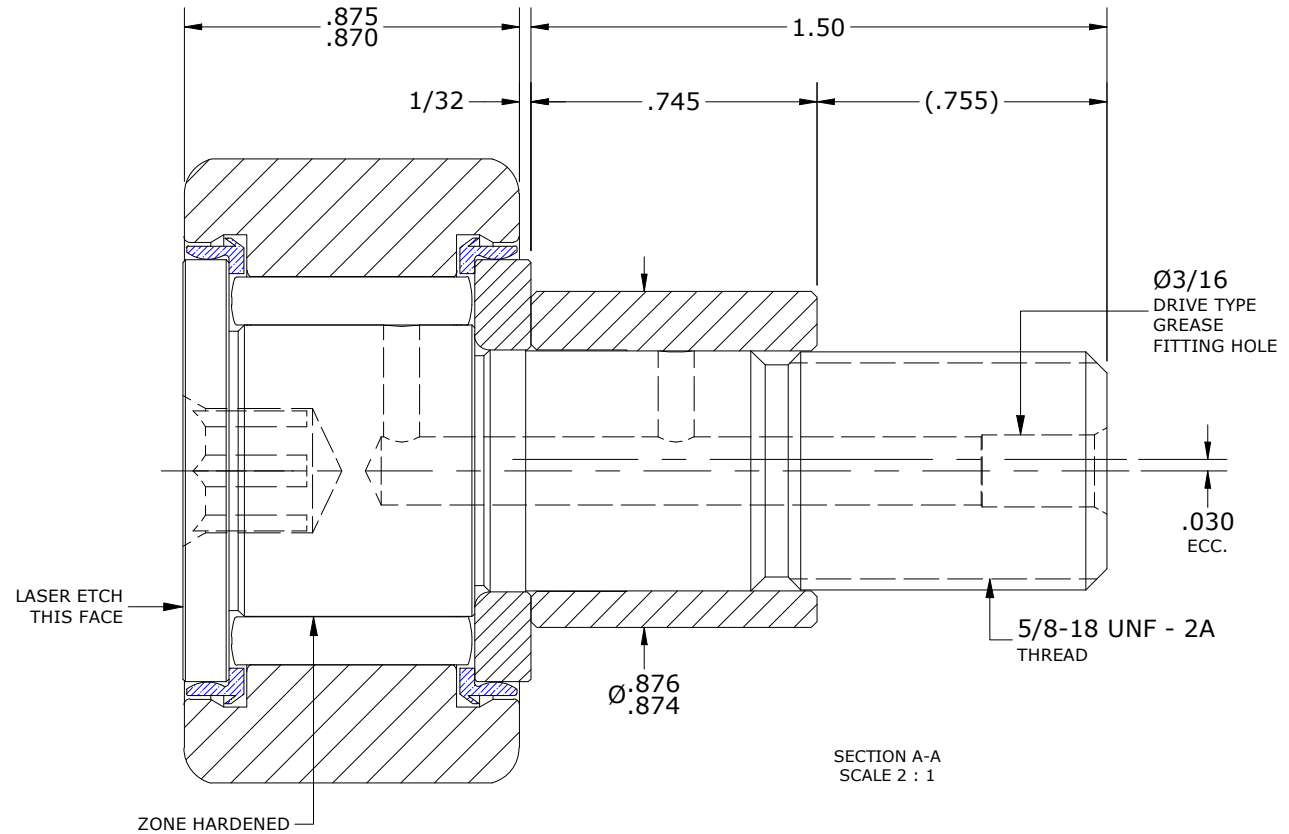
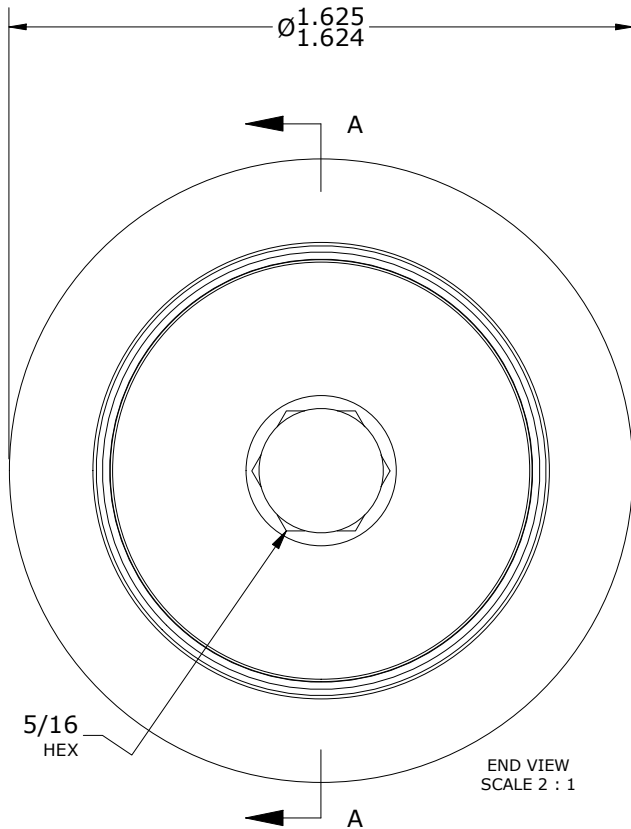
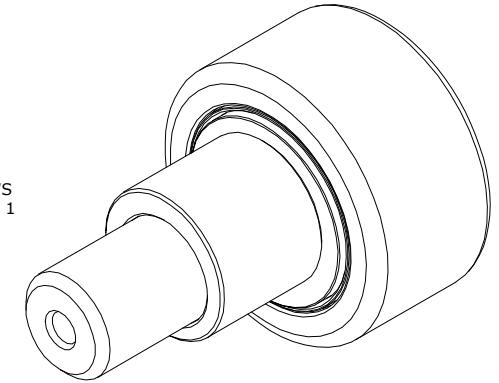
MAXIMUM CLAMPING TORQUE*	
Inch lbf	Nm
325	36.5

- NOTES:
- BEARING IS PACKED WITH NLGI GRADE 2, FOOD GRADE H1 GREASE (UNLESS OTHERWISE SPECIFIED).
 - LIMITING SPEED:
 - GREASE = 2,350 RPM
 - CUSTOM LASER ETCHING IS AVAILABLE UPON REQUEST

MS NO. _____ NSN NO. _____ DRAWING NO. SCE-52-SB



ISO VIEWS
SCALE 1 : 1



*TORQUE SPECIFICATION IS BASED ON LUBRICATED THREADS, IF USING DRY THREADS DOUBLE TORQUE VALUE.

MATERIAL NOTES:

OUTER RING - 440C STAINLESS STEEL, HEAT TREATED
 STUD - 440C STAINLESS STEEL, ZONE HARDENED
 WASHER - 440C STAINLESS STEEL, HEAT TREATED
 NEEDLE ROLLER(S) - 440C STAINLESS STEEL, HEAT TREATED
 SEAL(S) - SYNTHETIC

CUSTOMER PART#

XX = ± .01
 XXX = ± .005
 XXXX = ± .0005
 ANGLES = ± 1'
 INCH [METRIC]
 FRACTION = ± 1/32

CARTER MANUFACTURING IS
 NOT RESPONSIBLE FOR
 TYPOGRAPHICAL ERRORS

CARTER MANUFACTURING CO., INC.

GRAND HAVEN, MICHIGAN 49417

ENGINEERING CHANGE ORDER NOTE

REVISION

PART NAME: ASSEMBLY

PRODUCT TYPE: SC

B

AUTHOR BY

DRAWN BY

CHK'D BY

SALES

MATERIAL

HG

EMD

MD

NC

NOTED

REVISION BY

DATE

DATE

DATE

DATE

SHEET

SGW

3/8/2021

7/26/2006

3/8/2021

3/8/2021

1 OF 2