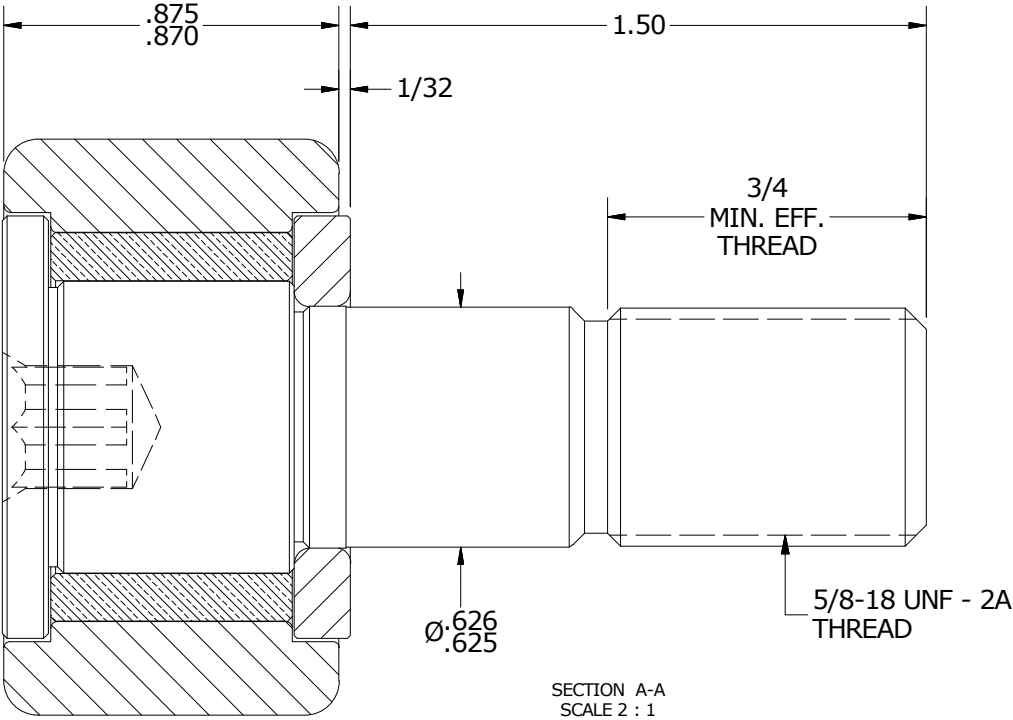
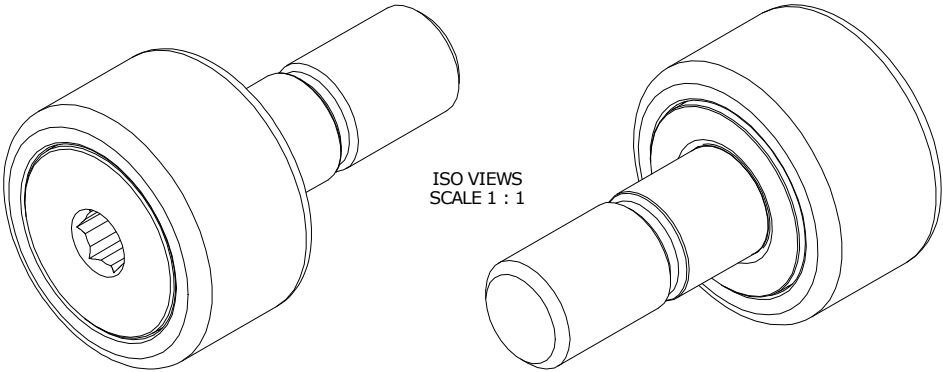
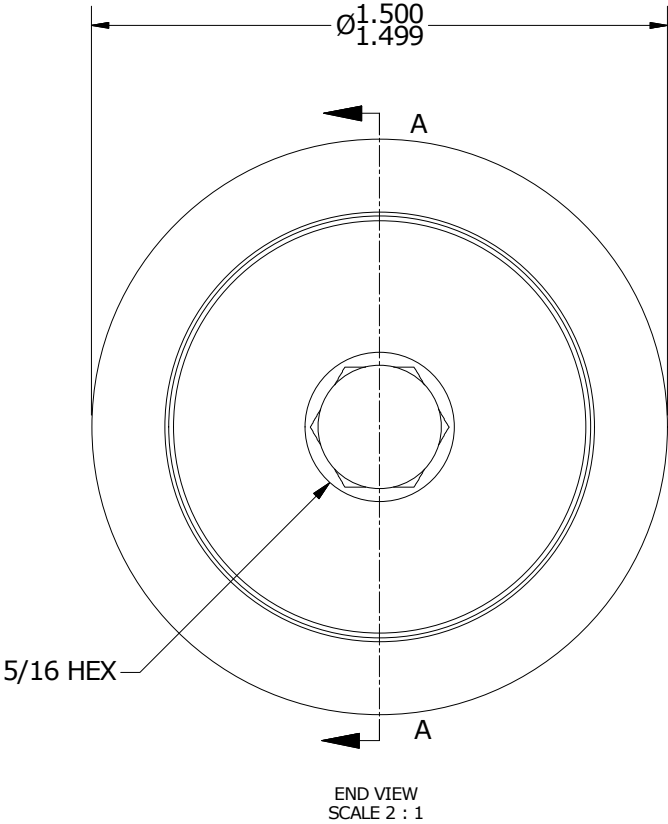


- NOTES:
- 1. BUSHING IS IMPREGNATED WITH OIL
 - 2. ALL EXPOSED SURFACES HAVE BLACK OXIDE



MATERIAL NOTES:

OUTER RACE - BEARING STEEL, HEAT TREATED
STUD - COLD ROLLED STEEL
WASHER - BEARING STEEL, HEAT TREATED
BUSHING - SINTERED BRONZE

CUSTOMER PART#

XX = ± .01
XXX = ± .005
XXXX = ± .0005
ANGLES = ± 1°
INCH [METRIC]
FRACTION = ± 1/32

CARTER MANUFACTURING IS
NOT RESPONSIBLE FOR
TYPOGRAPHICAL ERRORS

CARTER MANUFACTURING CO., INC.
GRAND HAVEN, MICHIGAN 49417

ENGINEERING CHANGE ORDER NOTE

REVISION

PART NAME: ASSEMBLY

C

AUTHOR BY
HG

DRAWN BY
MDS

CHK'D BY
SGW

SALES
KR

MATERIAL
NOTED

REVISION BY
MD

DATE
11/1/2016

DATE
4/24/2000

DATE
11/1/2016

DATE
2/25/2010

SHEET
1 OF 2