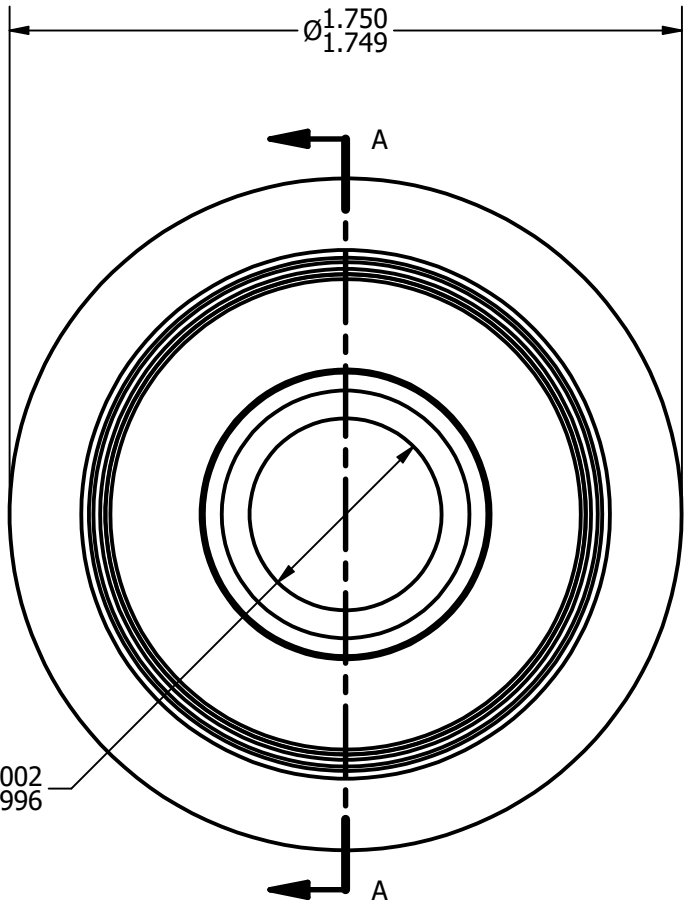
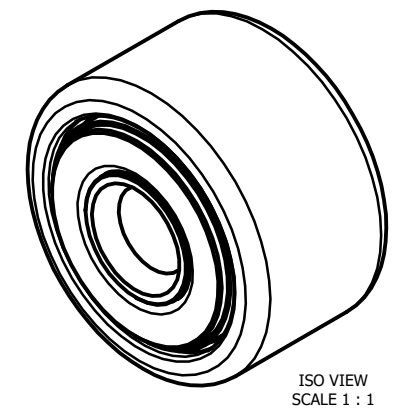
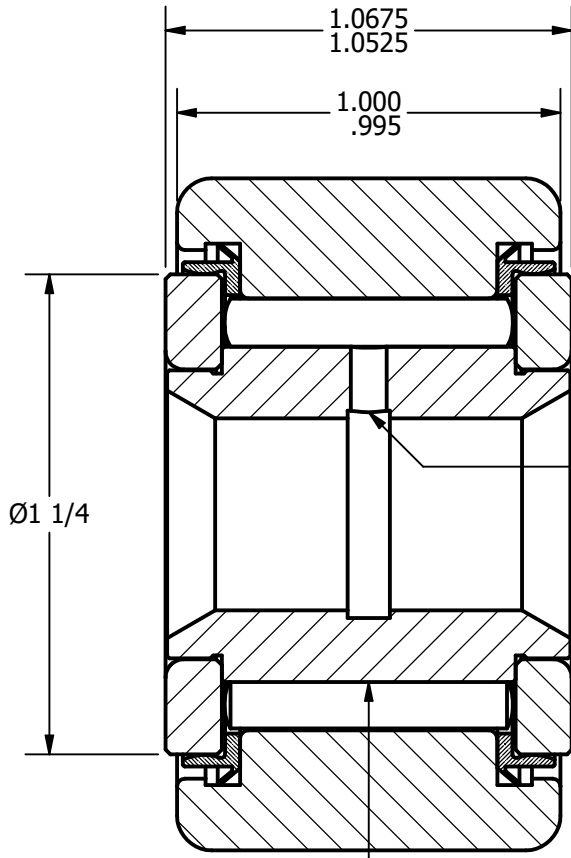


LOAD RATINGS	
RATING	Lbs
RADIAL BASIC DYNAMIC	5,730
MAXIMUM STATIC CAPACITY	14,800

NOTES:
 1. BEARING IS PACKED WITH CARTER STANDARD H1 FOOD GRADE GREASE



BASE VIEW
SCALE 2 : 1



SECTION A-A
SCALE 2 : 1

MATERIAL NOTES:
 OUTER RACE- 440C STAINLESS STEEL, HEAT TREATED
 INNER RACE- 440C STAINLESS STEEL, ZONE HARDENED
 NEEDLE ROLLERS - 440C STAINLESS STEEL, HEAT TREATED
 WASHERS - 440C STAINLESS STEEL, HEAT TREATED
 SEALS - SYNTHETIC

CUSTOMER PART#	.XX = ± .01 .XXX = ± .005 .XXXX = ± .0005 ANGLES = ± 1' INCH [METRIC] FRACTION = ± 1/32
CHANGE NOTE:	

CARTER MANUFACTURING IS NOT RESPONSIBLE FOR TYPOGRAPHICAL ERRORS	
REVISION	
B	AUTHOR. BY
DB	JAF
REV. BY	DATE
MD	1/30/2013

CARTER MANUFACTURING CO., INC.					
GRAND HAVEN, MICHIGAN 49417					
PART NAME: ASSEMBLY			SHEET 1 OF 2		
SALES	MATERIAL	CHK'D BY	DATE	DATE	DATE
KPR	NOTED	SGW	1/30/2013	8/9/2006	8/6/2006
	DRAWING NO.				SY-56-S