

# PRODUCT INFORMATION PACKET



Model No: C4T17FC30B

Catalog No: 102664.00

1/3HP..1725RPM.48.TEFC.208-230/460V.3PH.60HZ.CONT.NOT.40C.1.15SF.ROUND.GENERAL  
PURPOSE.C4T17FC30B.A

Totally Enclosed Fan Cooled (TEFC)



Regal and Leeson are trademarks of Regal Beloit Corporation or one of its affiliated companies.

©2018 Regal Beloit Corporation, All Rights Reserved. MC017097E



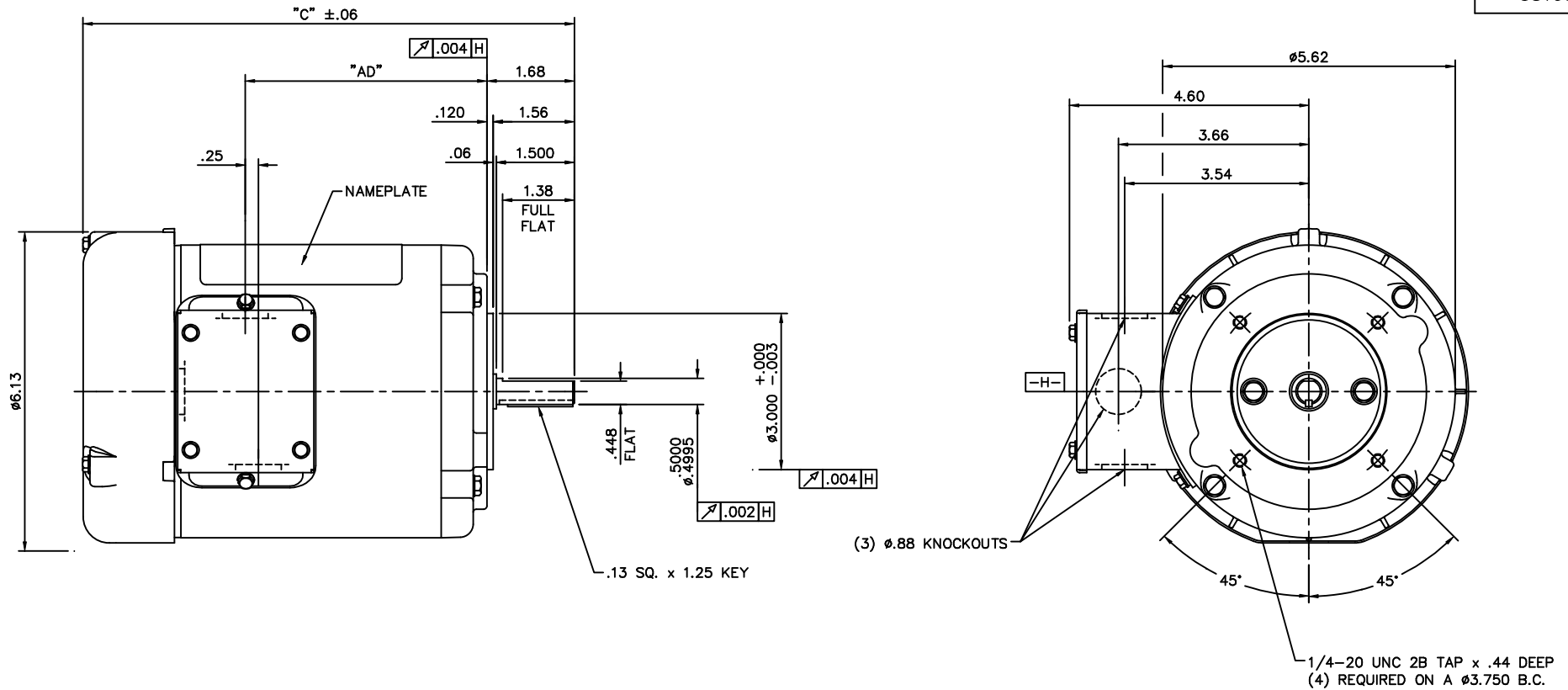


### Nameplate Specifications

Output HP	<b>0.33 Hp</b>	Output KW	<b>0.25 kW</b>
Frequency	<b>60 Hz</b>	Voltage	<b>208-230/460 V</b>
Current	<b>1.5-1.6/0.80 A</b>	Speed	<b>1725 rpm</b>
Service Factor	<b>1.15</b>	Phase	<b>3</b>
Efficiency	<b>64.3 %</b>	Duty	<b>Continuous</b>
Insulation Class	<b>B</b>	Design Code	<b>B</b>
KVA Code	<b>M</b>	Frame	<b>48C</b>
Enclosure	<b>Totally Enclosed Fan Cooled</b>	Overload Protector	<b>No</b>
Ambient Temperature	<b>40 °C</b>	Drive End Bearing Size	<b>6203</b>
Opp Drive End Bearing Size	<b>6203</b>	UL	<b>Recognized</b>
CSA	<b>Y</b>	CE	<b>N</b>
IP Code	<b>43</b>		


### Technical Specifications

Electrical Type	<b>Squirrel Cage Induction Run</b>	Starting Method	<b>Across The Line</b>
Poles	<b>4</b>	Rotation	<b>Reversible</b>
Mounting	<b>Round</b>	Motor Orientation	<b>HORIZONTAL</b>
Drive End Bearing	<b>BALL</b>	Opp Drive End Bearing	<b>BALL</b>
Frame Material	<b>Rolled Steel</b>	Shaft Type	<b>T</b>
Overall Length	<b>9.19 in</b>	Frame Length	<b>4.75 in</b>
Shaft Diameter	<b>0.500 in</b>	Shaft Extension	<b>1.5 in</b>
Assembly/Box Mounting	<b>F1 ONLY</b>		
Outline Drawing	<b>031699-475</b>	Connection Diagram	<b>005010.01</b>



DASH NO.	"C"	"AD"
450	8.94	4.14
475	9.19	4.39
500	9.44	4.64
525	9.69	4.89
550	9.94	5.14
575	10.19	5.39
600	10.44	5.64
625	10.69	5.89
650	10.94	6.14
675	11.19	6.39

GASKETS THROUGHOUT

			TOLERANCES UNLESS SPECIFIED			ELECTRIC MOTORS GEARMOTORS AND DRIVES	DRAWN PG 7/12/02		
			DEC.	INCHES			CHK	APPD	
			.X	$\pm .1$	TITLE OUTLINE - 48C FRAME "C" FACE MOUNT - TEFC		SCALE	1=2	
			.XX	$\pm .03$			REF	031634	
			.XXX	$\pm .005$			FMF	101981.00	
			.XXXX	$\pm .0005$			PREV		
NO.	REVISION	BY & DATE	CHK	ANG	$\pm 1/2"$	FINISH			
THIS DRAWING IN DESIGN AND DETAIL IS OUR PROPERTY AND MUST NOT BE USED EXCEPT IN CONNECTION WITH OUR WORK ALL RIGHTS OF DESIGN AND INVENTION ARE RESERVED THIS IS AN ELECTRONICALLY GENERATED DOCUMENT - DO NOT SCALE THIS PRINT			RFP			CAD FILE	031699	SIZE	DRAWING NO.
			DIST				B	031699	REV.

005010-01

VIEW FROM OUTSIDE OF MOTOR AT SWITCH END.



VOLTAGE	L1	L2	L3	JOIN & INSULATE
HIGH	T1	T2	T3	(T4,T7) (T5,T8) (T6,T9)
LOW	T1,T7	T2,T8	T3,T9	T4,T5,T6

				TOLERANCES UNLESS SPECIFIED		<b>REGAL</b> ™ <b>Regal Beloit America, Inc.</b>		DRAWN RDW 04/12/02		
				DEC.	INCHES			CHK		
				.X	±.1			APPD		
				.XX	±.01			SCALE 1=1		
				.XXX	±.005	TITLE		REF FIG.2-51		
A	UPDATED TO REGAL LOGO	SAJ 06/26/15	AJY	.XXXX	±.0005	MAT'L.		FMF		
NO.	REVISION	BY & DATE	CHK	ANG	±1/2"	FINISH		PREV		
THIS DRAWING IN DESIGN AND DETAIL IS OUR PROPERTY AND MUST NOT BE USED EXCEPT IN CONNECTION WITH OUR WORK ALL RIGHTS OF DESIGN AND INVENTION ARE RESERVED THIS IS AN ELECTRONICALLY GENERATED DOCUMENT - DO NOT SCALE THIS PRINT				RFP	04/12/02	CAD FILE		SIZE	DRAWING NO.	REV.
				DIST	BRF-NLV	00501001		A	005010-01	A



# LEESON ELECTRIC CORPORATION

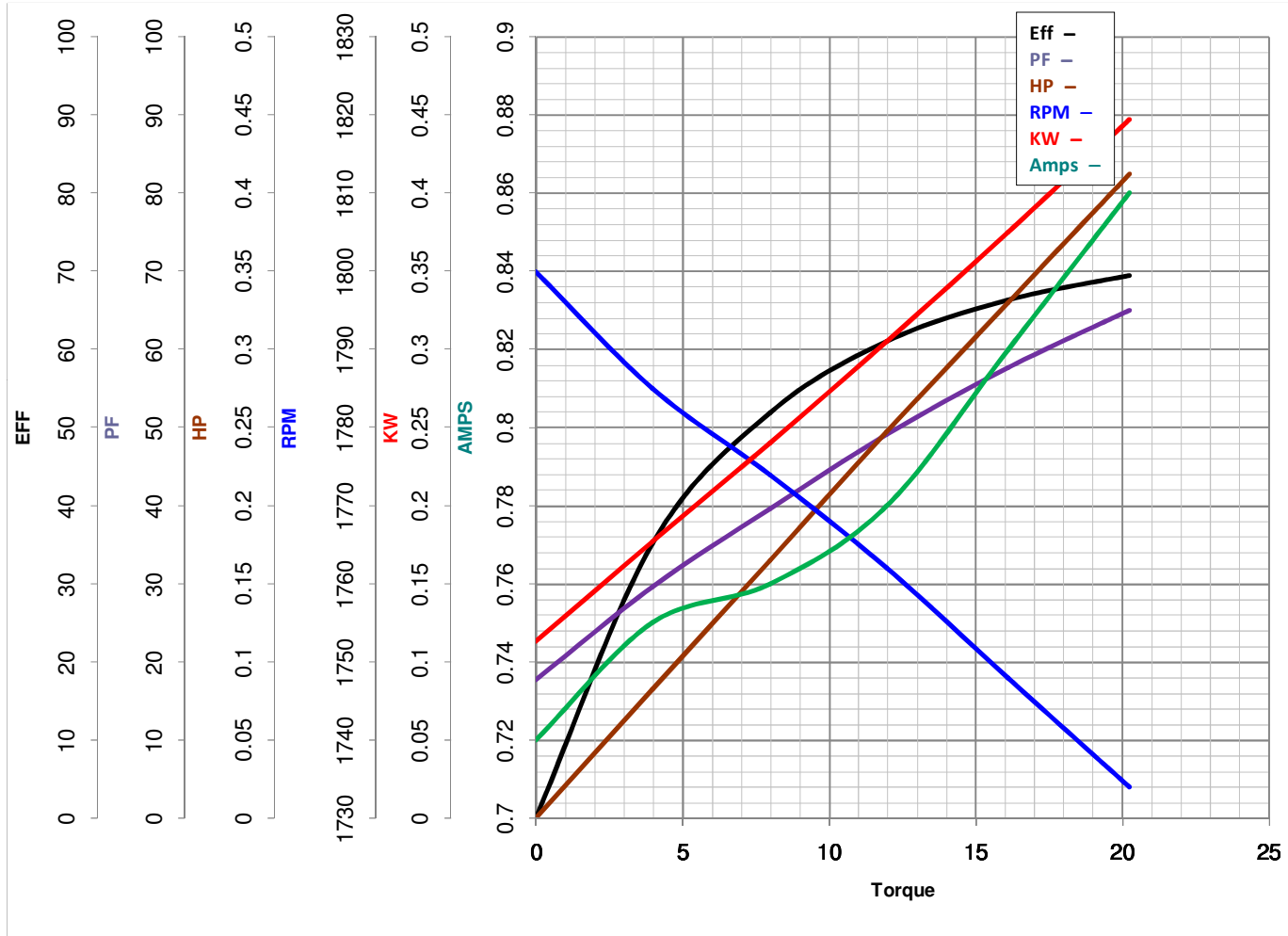
TYPICAL PERFORMANCE CURVE for AC MOTOR

Model No 102664.00

Catalog No 102664.00

Curve at 460 Volts      0.33 HP      PHASE 3  
60 HZ  
0.33 HP      VOLTS 208-230/460

HZ 60      RPM 1725



Torque in Oz.Ft

FL TORQUE 16.08 Oz.Ft  
 BD TORQUE 82.3 Oz.Ft  
 LR TORQUE 67.11 Oz.Ft

FL AMPS 1.5-1.6/8  
 PU TORQUE 66.6 Oz.Ft  
 LR AMPS 4.7

WINDING TE48414-3

Date 5/22/2018