



Explosion Proof
Motors

Automotive
Duty Motors

Pump
Motors

Washguard®
Motors

Agricultural
Duty Motors

HVAC / Fan
Motors

Special Voltage
Motors

Definite
Purpose Motors

Brake Motors

- USDA-approved epoxy painted motors
- Stainless steel motors
- Encapsulated stainless steel motors available
- NEMA and IEC flange motors
- Three phase, single phase and DC washdown duty motors
- AC and DC washdown gearmotors
- Rigid base and C face mount types
- BISSC approved designs
- Double lip contact seals and v-ring seals used for shaft seals
- 3-year warranty on encapsulated and Premium efficient models
- Washdown brakemotors and pump motors available
- UL recognized and CSA certified

Applications:

Designed to meet the demanding washdown conditions that you may find in food processing plants, chemical processing, pharmaceutical plants and the beverage and brewing industries.





Premium StainlessDuck

Maximum service in critically clean or corrosive environments



- All exterior components of 300 series stainless steel
- Endshields o-ring sealed to frame
- IEEE 841 severe-duty features standard
- Meets IP56 enclosure protection
- AC, DC and IEC designs
- (SGRs) shaft grounding rings

SST StainlessDuck

Stainless Steel Tough for demanding washdown applications



- All exterior components of 300 series stainless steel, including motor frame, endshield and conduit box castings
- Moisture resistant sealant between frame and endbells
- Full-fact nameplate is laser-etched on the motor frame
- Four locations for T-drains provided on each endshield
- Meets IP55 enclosure protection

StainlessDuck

Superior, extended life in severe environments



- Paint-free exterior—stainless frame and conduit box lid, specially processed endshields and conduit box housing
- Etched stainless steel nameplate
- Meets IP55 enclosure protection
- Three phase motors are suitable for use on VFDs

WhiteDuck

Enhanced performance in wet, humid areas



- Our original moisture-shedding “duck” motor
- USDA-approved white epoxy finish
- Stainless steel shaft, conduit box cover, nameplate, fan guard
- Four endshield drains
- Meets IP55 enclosure protection

ExtremeDuck

Revolutionary Designed Stainless Steel Motors are built to be the last Stainless Steel Washdown motors you will ever need!



- Total winding encapsulation using an Epoxy Resin
- All exterior components are 300-Series stainless steel
- (SRGs) shaft grounding rings
- Protech Bearing isolator used for the output shaft seal
- Pre-lubricated double-sealed bearings
- Full fact nameplate is laser etched



Explosion Proof Motors

Automotive Duty Motors

Pump Motors

Washguard® Motors

Agricultural Motors

HVAC / Fan Motors

Special Voltage Motors

Definite Purpose Motors

Brake Motors



WASHGUARD® MOTORS ARE BUILT TO HANDLE HIGH-PRESSURE WASHDOWNS!*

Explosion Proof Motors

Automotive Duty Motors

Pump Motors

Washguard® Motors

Agricultural Duty Motors

HVAC / Fan Motors

Special Voltage Motors

Definite Purpose Motors

Brake Motors

Stainless-steel or white polypropylene fan guard on all WASHGUARD® frames.

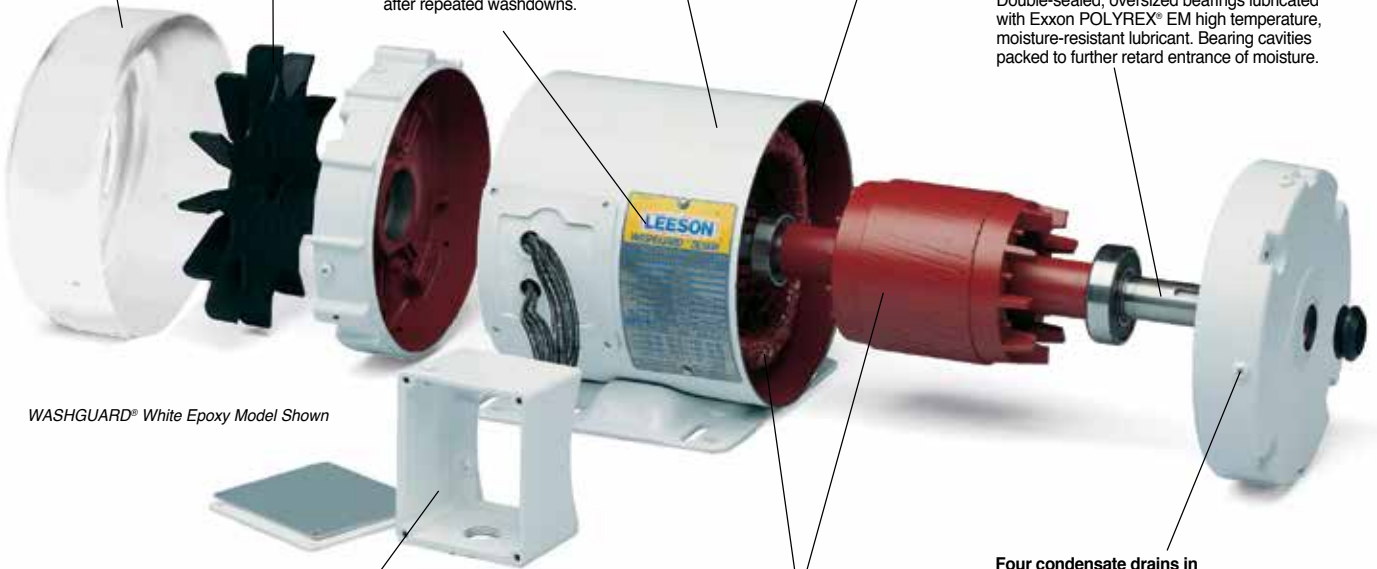
Composite fan is chemically-inert and static-free. Fan is positively positioned on shaft on TEFC designs only.

Stainless-steel, "full-fact" nameplate includes information on motor efficiency and connections. Readable even after repeated washdowns.

USDA-approved, white epoxy finish for superior protection and resistance to caustic cleaning solutions.

Encapsulated starting switch (single-phase WASHGUARD® motors) uses a patented, field-proven design that is immune to moisture, shock and vibration. No moving parts or exposed contacts to become corroded or inoperable.

Moisture-resistant shaft system includes 303 stainless-steel shaft and lubricated, spring-loaded contact seals in each endshield. Patented V-ring Forsheda seal on shaft end to deflect water (see inset). Double-sealed, oversized bearings lubricated with Exxon POLYREX® EM high temperature, moisture-resistant lubricant. Bearing cavities packed to further retard entrance of moisture.

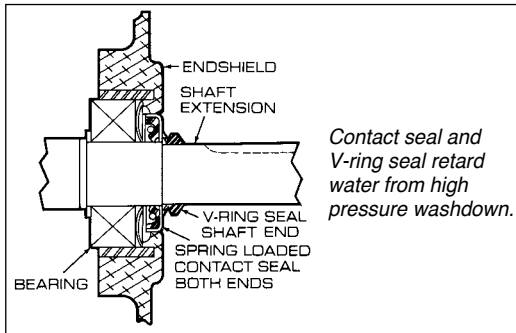


WASHGUARD® White Epoxy Model Shown

Cast, oversized conduit box with tough, high-temperature nitrile gaskets and stainless-steel cover and hardware. Oversized design with threaded entrance. All machined fits are sealed and nylon gaskets are used under bolt heads.

Interior coatings protect against moisture and corrosion. Frame, base, endshields, rotor, and interior components are protected by enamel and polyester compounds of outstanding adhesion and resistance to moisture, acids, alkalis, and oils. High temperature, moisture resistant IRIS insulation system assures long life on inverter service. Windings are immersed and cured in polyester insulating compound.

Four condensate drains in each endshield (at three, six, nine, and twelve o'clock) purge condensate and water which may enter the motor.



* Also excellent for applications requiring a motor that is "tropicalized"!



Washguard® Motors

Single Phase - White Epoxy Painted

Single Phase - TEFC - Rigid Base - Featuring Electronic Solid State Encapsulated Switch

HP	SYN RPM 60 Hz	NEMA Frame	Catalog Number	Stock	List Price	Model Number	App. Wgt. (lbs)	Voltage	F. L. Amps @ 230 V	Service Factor	"C" Dim. (Inches)	Notes
1/2	1800	56	112431.00	✓	653	C6C17WB1	24	115/208-230	4.4	1.15	10.81	S, US
3/4	1800	56	112432.00	✓	768	C6C17WB2	31	115/208-230	5.4	1.15	11.31	S, US
1	1800	56	112626.00	✓	880	C6C17WB3	33	115/208-230	6.4	1.15	11.81	S, US
1800	143T	120589.00	✓	880	N143C17WB1	34	115/208-230	6.4	1.15	12.25	S, US	
1 1/2	1800	145T	120590.00	✓	1,121	C145C17WB1	47	115/208-230	9.5	1.15	13.75	S, US
2	1800	182T	131571.00	✓	1,625	C182C17WB3	60	115/208-230	12.6	1.15	13.46	S, MX

Specifications are subject to change without notice

♥ Note listing on inside back flap

Single Phase - TEFC - C Face With Base - Featuring Electronic Solid State Encapsulated Switch

HP	SYN RPM 60 Hz	NEMA Frame	Catalog Number	Stock	List Price	Model Number	App. Wgt. (lbs)	Voltage	F. L. Amps @ 230 V	Service Factor	"C" Dim. (Inches)	Notes
1/3	3600	56C	113580.00	✓	645	C6C34WK2	27	115/208-230	2.6	1.15	10.69	S, US
1800	56C	112526.00	✓	653	C6C17WK2	28	115/208-230	3.2	1.15	10.69	S, US	
1/2	3600	56C	113581.00	✓	653	C6C34WK3	25	115/208-230	3.6	1.15	10.69	S, US
1800	56C	112527.00	✓	677	C6C17WK3	28	115/208-230	4.4	1.15	11.19	S, US	
3/4	3600	56C	113582.00	✓	662	C6C34WK4	31	115/208-230	5.0	1.15	11.69	S, US
1800	56C	112528.00	✓	767	C6C17WK4	30	115/208-230	5.4	1.15	11.69	S, US	
1	3600	56C	113583.00	✓	664	C6C34WK6	31	115/208-230	6.0	1.15	12.19	S, US
1800	56C	112529.00	✓	883	C6C17WK5	33	115/208-230	6.4	1.15	12.19	S, US	
1 1/2	3600	56C	113584.00	✓	972	C6C34WK5	36	115/208-230	8.5	1.15	12.69	S, US
1800	56HC	113300.00	✓	1,125	C6C17WK6	45	115/208-230	9.5	1.15	13.69	S, US	
2	3600	56HC	114637.00	✓	1,121	C6C34WK9	43	115/208-230	10.0	1.00	13.69	S, US

Specifications are subject to change without notice

♥ Note listing on inside back flap



Single Phase - TEFC - C Face Less Base - Featuring Electronic Solid State Encapsulated Switch

HP	SYN RPM 60 Hz	NEMA Frame	Catalog Number	Stock	List Price	Model Number	App. Wgt. (lbs)	Voltage	F. L. Amps @ 230 V	Service Factor	"C" Dim. (Inches)	Notes
1/3	3600	56C	114310.00	✓	641	C6C34WC2	25	115/208-230	2.6	1.15	10.69	S, US
1800	56C	114311.00	✓	650	C6C17WC2	27	115/208-230	3.2	1.15	10.69	S, US	
1/2	3600	56C	114312.00	✓	650	C6C34WC3	25	115/208-230	3.6	1.15	10.69	S, US
1800	56C	114313.00	✓	667	C6C17WC3	29	115/208-230	4.4	1.15	11.19	S, US	
3/4	3600	56C	114314.00	✓	653	C6C34WC4	31	115/208-230	5.0	1.15	11.69	S, US
1800	56C	114315.00	✓	771	C6C17WC4	31	115/208-230	5.4	1.15	11.69	S, US	
1	3600	56C	114316.00	✓	657	C6C34WC5	29	115/208-230	6.0	1.15	12.19	S, US
1800	56C	114317.00	✓	874	C6C17WC5	34	115/208-230	6.4	1.15	12.19	S, US	
1 1/2	3600	56C	114318.00	✓	971	C6C34WC6	36	115/208-230	8.5	1.15	12.69	S, US
1800	56C	114319.00	✓	1,121	C6C17WC6	43	115/208-230	9.5	1.15	13.69	S, US	

Specifications are subject to change without notice

♥ Note listing on inside back flap

View On-line Technical Information



Explosion Proof Motors

Automotive Duty Motors

Pump Motors

Washguard® Motors

Agricultural Motors

HVAC / Fan Motors

Special Voltage Motors

Definite Purpose Motors

Brake Motors

Washguard® Motors

White Epoxy Painted - Three Phase



Three Phase - TENV and TEFC C Face Less Base

HP	SYN RPM 60 Hz	NEMA Frame	Catalog Number	Stock	List Price	Model Number	App. Wgt. (lbs)	Voltage	F. L. Amps @ 230 V	% F.L. Eff.	Service Factor	"C" Dim. (Inches)	♥Notes
1/4	1800	56C	113649.00	✓	625	C6T17VC5	19	208-230/460	1.1	68.0	1.15	9.56	S, US, 12
1/3	3600	56C	116640.00	✓	646	C6T34VC16	19	208-230/460	1.1	77.0	1.15	10.08	S, US, 12
	1800	56C	113954.00	✓	664	C6T17VC6	19	208-230/460	1.3	72.0	1.15	9.56	S, US, 12
	1800	56C	116642.00	✓	664	C6T17WC23	19	208-230/460	1.7	68.0	1.15	10.69	S, US, 13
1/2	3600	56C	116643.00	✓	666	C6T34VC17	22	208-230/460	1.6	82.5	1.15	10.06	S, US, 12
	1800	56C	113473.00	✓	685	C6T17VC4	22	208-230/460	1.8	78.5	1.15	10.06	S, US, 12
	1800	56C	116644.00	✓	685	C6T17WC24	22	208-230/460	2.0	74.0	1.15	11.19	S, US, 13
3/4	3600	56C	113022.00	✓	693	C6T34VC1	23	208-230/460	2.4	84.0	1.15	11.06	S, US, 12
	1800	56C	113019.00	✓	793	C6T17VC1	28	208-230/460	2.5	80.0	1.15	10.56	S, US, 12
	1800	56C	116645.00	✓	793	C6T17FC204	28	208-230/460	2.8	77.0	1.15	11.69	S, US, 13
1	3600	56C	113023.00	✓	808	C6T34VC2	35	208-230/460	2.6	85.5	1.15	11.56	S, US, 12
	1800	56C	113020.00	✓	827	C6T17VC2	32	208-230/460	3.2	80.0	1.15	11.56	S, US, 12
	1800	56C	116646.00	✓	827	C6T17WC25	32	208-230/460	3.8	77.0	1.15	11.69	S, US, 13
	1800	143TC	120760.00	✓	827	C143T17VC1	35	208-230/460	3.2	80.0	1.15	11.75	S, US, 12
	1800	143TC	G121652.00	✓	847	C143T17WC8	33	208-230/460	3.1	82.5	1.15	13.25	S, US, 13
1 1/2	3600	56C	113024.00	✓	857	C6T34VC3	42	208-230/460	3.8	84.0	1.15	12.56	S, US, 12
	1800	56C	113021.00	✓	862	C6T17VC3	44	208-230/460	4.2	84.0	1.15	13.06	S, US, 12
	1800	56C	116647.00	✓	862	C6T17WC26	44	208-230/460	5.0	78.5	1.15	12.69	S, US, 13
	1800	145TC	120761.00	✓	862	C145T17VC1	47	208-230/460	4.2	84.0	1.15	13.25	S, US, 12
	1800	145TC	G121655.00	✓	885	C145T17WC28	45	208-230/460	4.4	84.0	1.15	13.25	S, US, 13
2	3600	56C	113593.00	✓	980	C6T34VC5	47	208-230/460	5.0	84.0	1.00	13.06	S, US, 12
	3600	145TC	121040.00	✓	980	C145T34VC1	45	208-230/460	5.0	84.0	1.15	13.12	S, US, 12
	1800	56C	114616.00	✓	1,006	C6T17WC12	48	208-230/460	6.2	81.5	1.15	12.69	S, US, 13
	1800	145TC	G120762.00	✓	1,093	C145T17WC27	47	208-230/460	5.6	84.0	1.15	13.75	S, US, 13
3	3600	56C	115976.00	✓	1,196	C6T34WC7	39	208-230/460	7.6	84.0	1.15	13.19	S, US, 13
	3600	145TC	G120987.00	✓	1,291	C145T34WC15	44	208-230/460	7.6	85.5	1.15	13.75	S, US, 13
	1800	182TC	G131596.00	✓	1,440	C182T17WC9	81	208-230/460	7.6	87.5	1.15	14.47	S, MX, 13
5	3600	184TC	G131595.00	✓	1,802	C184T34WC7	75	208-230/460	12.0	87.5	1.15	14.47	S, MX, 13
	1800	184TC	G131597.00	✓	1,625	C184T17WC8	95	208-230/460	13.0	87.5	1.15	14.97	S, MX, 13
7 1/2	3600	S213TC	G131594.00	✓	2,234	C184T34WC6	102	208-230/460	16.8	88.5	1.00	17.47	S, MX, 13
	1800	213TC	G140467.00	✓	2,060	C213T17WC3	145	208-230/460	20.4	89.5	1.15	17.71	S, MX, 13
10	3600	215TC	G140737.00	✓	2,654	C215T34WC2	170	208-230/460	24.0	89.5	1.15	20.57	S, US, 13
	1800	215TC	G140465.00	✓	2,341	C215T17WC3	180	208-230/460	26.0	89.5	1.15	18.71	S, MX, 13
15	3600	215TC	G140738.00	✓	3,267	C215T34WC4	140	208-230/460	36.0	90.2	1.15	20.57	S, US, 13

Note 12 - TENV
Specifications are subject to change without notice

♥ Note listing on inside back flap



View On-line Technical Information





Three Phase - TEFC - Rigid Base

HP	SYN RPM 60 Hz	NEMA Frame	Catalog Number	Stock	List Price	Model Number	App. Wgt. (lbs)	Voltage	F. L. Amps @ 230V	% F.L. Eff.	Service Factor	"C" Dim. (Inches)	Notes
1/2	1800	56	112427.00	√	673	C6T17WB6	24	208-230/460	2.0	74.0	1.15	10.81	S, US
3/4	1800	56	112428.00	√	702	C6T17WB7	27	208-230/460	2.8	77.0	1.15	10.81	S, US
1	1800	56	112627.00	√	738	C6T17WB8	26	208-230/460	3.8	77.0	1.15	11.31	S, US
		143T	121865.00	√	928	C143T17WB4	35	208-230/460	3.1	85.5	1.15	12.75	S, US
1 1/2	1800	145T	121869.00	√	930	C145T17WB23	51	208-230/460	4.4	86.5	1.15	12.75	S, US
2	1800	145T	121866.00	√	1,157	C145T17WB22	46	208-230/460	5.6	86.5	1.15	13.75	S, US
3	3600	182T	132388.00	√	1,583	C182T34WB1	69	208-230/460	7.6	86.5	1.25	13.96	S, MX
		56HZ	115751.00	√	1,029	C6T17FB113	45	208-230/460	8.6	82.5	1.00	14.25	S, US,
		182T	132196.00	√	1,553	C182T17WB10	69	208-230/460	8.2	89.5	1.15	13.96	S, MX
5	3600	184T	132202.00	√	1,776	C184T34WB5	75	208-230/460	12.0	88.5	1.25	14.46	S, MX
		184T	132197.00	√	1,776	C184T17WB8	85	208-230/460	13.0	89.5	1.15	14.96	S, MX
7 1/2	3600	184T	132306.00	√	2,215	C184T34WB6	87	208-230/460	16.8	89.5	1.15	15.96	S, MX
		S213T	132204.00	√	2,215	C184T34WB6	87	208-230/460	16.8	89.5	1.15	16.59	S, MX
		213T	140819.00	√	2,254	C213T17WB6	131	208-230/460	20.4	91.7	1.25	17.21	S, MX
10	1800	215T	140820.00	√	2,696	C215T17WB5	165	208-230/460	26.0	91.7	1.25	18.71	S, MX

Green items are Premium Efficient

listing on inside back flap

Specifications are subject to change without notice

Explosion Proof Motors

Automotive Duty Motors

Pump Motors

Washguard® Motors

Agricultural Motors

HVAC / Fan Motors

Special Voltage Motors

Definite Purpose Motors

Brake Motors

View On-line Technical Information



Washguard® Motors

White Epoxy Painted - Three Phase



Three Phase - TENV and TEFC C Face With Base

HP	SYN RPM 60 Hz	NEMA Frame	Catalog Number	Stock	List Price	Model Number	App. Wgt. (lbs)	Voltage	F. L. Amps @ 230 V	% F.L. Eff.	Service Factor	"C" Dim. (Inches)	Notes
1/4	1800	56C	112523.00	✓	629	C6T17WK8	21	208-230/460	1.1	67.0	1.15	10.69	S, US, 13
1/3	3600	56C	116641.00	✓	666	C6T34VK15	22	208-230/460	1.1	77.0	1.15	10.08	S, US, 12
	1800	56C	112547.00	✓	692	C6T17WK9	22	208-230/460	1.7	68.0	1.15	10.69	S, US, 13
1/2	3600	56C	113588.00	✓	627	C6T34VK3	26	208-230/460	1.5	82.5	1.15	10.58	S, US, 12
	1800	56C	113586.00	✓	702	C6T17VK2	23	208-230/460	1.8	78.5	1.15	10.06	S, US, 12
	1800	56C	112429.00	✓	702	C6T17WK1	22	208-230/460	2.0	74.0	1.15	11.19	S, US, 13
	1200	56C	115743.00	✓	878	C6T11VK1	24	208-230/460	2.3	77.0	1.15	11.56	S, US, 12
3/4	3600	56C	113589.00	✓	688	C6T34VK2	24	208-230/460	2.4	84.0	1.15	11.08	S, US, 12
	1800	56C	113587.00	✓	813	C6T17VK1	30	208-230/460	2.5	80.0	1.15	10.56	S, US, 12
	1800	56C	112430.00	✓	813	C6T17WK2	26	208-230/460	2.8	77.0	1.15	11.19	S, US, 13
	1200	56HC	115744.00	✓	955	C6T11VK2	25	208-230/460	3.0	78.5	1.15	13.06	S, US, 12
1	3600	56C	113590.00	✓	806	C6T34VK4	34	208-230/460	2.6	85.5	1.15	11.58	S, US, 12
	1800	56C	112524.00	✓	847	C6T17WK10	27	208-230/460	3.8	77.0	1.15	11.69	S, US, 13
	1800	143TC	121867.00	✓	976	C143T17WK11	37	208-230/460	3.2	85.5	1.15	13.25	S, US, 13
	1200	56HC	115745.00	✓	1,021	C6T11WK3	35	208-230/460	4.0	77.0	1.15	13.08	S, US, 13
1 1/2	3600	56C	113591.00	✓	889	C6T34VK5	44	208-230/460	3.8	84.0	1.15	12.56	S, US, 12
	1800	145TC	121871.00	✓	1,017	C145T17WK31	53	208-230/460	4.8	86.5	1.15	13.25	S, US, 13
	1800	56C	112643.00	✓	885	C6T17WK11	32	208-230/460	5.0	78.5	1.15	12.19	S, US, 13
	1200	56HC	115746.00	✓	1,079	C6T11WK4	31	208-230/460	5.7	77.0	1.15	14.18	S, US, 13
2	3600	56HC	113592.00	✓	988	C6T34VK6	48	208-230/460	5.0	84.0	1.15	13.06	S, US, 12
	3600	145TC	121039.00	✓	988	C145T34VK1	43	208-230/460	4.8	85.5	1.15	13.12	S, US, 12
	1800	56C	112644.00	✓	1,014	C6T17WK12	36	208-230/460	6.2	81.5	1.15	12.69	S, US, 13
	1800	145TC	121868.00	✓	1,257	C145T17WK30	49	208-230/460	5.8	86.5	1.15	13.75	S, US, 13
3	3600	145TC	121870.00	✓	1,485	C145T34WK28	46	208-230/460	7.6	89.5	1.15	13.75	S, US, 13
	3600	182TC	132199.00	✓	1,707	C182T34WK1	80	208-230/460	7.6	86.5	1.25	14.97	S, MX, 13
	1800	182TC	132198.00	✓	1,684	C182T17WK13	80	208-230/460	7.8	89.5	1.15	14.47	S, MX, 13
5	3600	184TC	132200.00	✓	2,109	C184T34WK10	79	208-230/460	12.0	88.5	1.15	14.47	S, MX, 13
	1800	184TC	132201.00	✓	1,901	C184T17WK15	84	208-230/460	12.8	89.5	1.15	14.97	S, MX, 13
7 1/2	3600	184TC	132205.00	✓	2,614	C184T34WK17	94	208-230/460	17.6	89.5	1.15	15.97	S, MX, 13
	3600	213TC	141120.00	✓	2,674	C213T34WK6	140	208-230/460	17.8	89.5	1.15	17.47	S, MX, 13
	1800	213TC	140822.00	✓	2,451	C213T17WK9	135	208-230/460	21.4	91.7	1.25	17.71	S, MX, 13
10	3600	215TC	140823.00	✓	3,157	C215T34WK9	129	208-230/460	23.6	90.2	1.15	20.57	S, US, 13
	1800	215TC	140821.00	✓	2,786	C215T17WK9	145	208-230/460	26.6	91.7	1.25	18.71	S, MX, 13

Green items are Premium Efficient

♥ Note listing on inside back flap

Note 12 - TENV

Specifications are subject to change without notice

Three Phase • 575 Volts

Three Phase - TEFC - C Face With Base

HP	SYN RPM 60 Hz	NEMA Frame	Catalog Number	Stock	List Price	Model Number	App. Wgt. (lbs)	Voltage	F. L. Amps @ 575 V	% F.L. Eff.	Service Factor	"C" Dim. (Inches)	Notes
1/4	1800	56C	112520.00	✓	629	C6T17WK5	24	575	0.4	68.0	1.15	10.69	S, US
1/3	1800	56C	112521.00	✓	651	C6T17WK6	22	575	0.7	68.0	1.15	10.69	S, US
1/2	1800	56C	112483.00	✓	702	C6T17WK3	28	575	0.8	74.0	1.15	10.69	S, US
3/4	1800	56C	112484.00	✓	813	C6T17WK4	24	575	1.1	77.0	1.15	11.19	S, US
1	1800	56C	112522.00	✓	847	C6T17WK7	30	575	1.5	77.0	1.15	11.69	S, US

Specifications are subject to change without notice

♥ Note listing on inside back flap



View On-line Technical Information





Washguard® Motors Washdown Duty Pump Motors White Epoxy Painted

Three Phase - TEFC - JM Pump - EAct Efficient - C Face With Base

HP	SYN RPM 60 Hz	NEMA Frame	Catalog Number	Stock	List Price	Model Number	App. Wgt. (lbs)	Voltage	F. L. Amps @ 230 V	% F.L. Eff.	Service Factor	"C" Dim. (Inches)	♥Notes
1	1800	143JM	G121579.00	✓	1,132	C143T17WK16	41	208-230/460	3.1	82.5	1.15	16.25	S, US
1 1/2	3600	143JM	G121580.00	✓	1,222	C143T34WK9	33	208-230/460	4.0	82.5	1.15	16.25	S, US
	1800	145JM	G121581.00	✓	1,254	C145T17WK38	47	208-230/460	4.4	84.0	1.15	16.25	S, US
2	3600	145JM	G121582.00	✓	1,380	C145T34WK22	50	208-230/460	5.2	84.0	1.15	16.25	S, US
	1800	145JM	G121583.00	✓	1,294	C145T17WK39	49	208-230/460	5.6	84.0	1.15	16.75	S, US
3	3600	145JM	G121584.00	✓	1,480	C145T34WK23	54	208-230/460	7.6	85.5	1.15	16.75	S, US
	1800	182JM	G131967.00	✓	1,646	C182T17WK15	79	208-230/460	8.2	87.5	1.15	16.75	S, MX
5	3600	184JM	G131968.00	✓	1,964	C184T34WK12	81	208-230/460	12.0	87.5	1.15	16.75	S, MX
	1800	184JM	G131969.00	✓	1,781	C184T17WK17	95	208-230/460	13.0	87.5	1.15	17.63	S, MX
7 1/2	3600	184JM	G131970.00	✓	2,152	C184T34WK13	110	208-230/460	16.8	88.5	1.15	18.25	S, MX
	1800	213JM	G140733.00	✓	2,401	C213T17WK13	135	208-230/460	20.4	89.5	1.15	19.50	S, MX
10	3600	215JM	G140734.00	✓	2,959	C215T34WK5	142	208-230/460	24.0	89.5	1.15	22.20	S, US
	1800	215JM	G140735.00	✓	2,794	C215T17WK12	150	208-230/460	26.0	89.5	1.15	21.70	S, MX
15	3600	215JM	G140736.00	✓	3,382	C215T34WK6	160	208-230/460	36.0	90.2	1.15	22.20	S, US

Specifications are subject to change without notice

♥ Note listing on inside back flap

Washguard® Jet Pump Motors

Washdown duty three phase jet pump motors for industrial service. These motors include all of the features of LEESON's White Duck Washguard® motors with the addition of a 56J threaded shaft for use on jet pumps. For demanding pump applications in wet, humid, or washdown environments.

Three Phase - TEFC - C Face Less Base - Threaded Shaft

HP	SYN RPM 60 Hz	NEMA Frame	Catalog Number	Stock	List Price	Model Number	App. Wgt. (lbs)	Voltage	F. L. Amps @ 230 V	% F.L. Eff.	Service Factor	"C" Dim. (Inches)	♥Notes
3/4	3600	56J	116774.00	✓	695	C6T34WC14	23	208-230/460	2.4	75.5	1.15	10.81	S, US
1	3600	56J	116775.00	✓	808	C6T34WC15	35	208-230/460	3.2	77.0	1.15	10.81	S, US
1 1/2	3600	56J	116776.00	✓	860	C6T34WC13	42	208-230/460	4.2	81.5	1.15	11.81	S, US
2	3600	56J	116777.00	✓	983	C6T34WC11	47	208-230/460	5.6	82.5	1.15	12.31	S, US
3	3600	56J	116778.00	✓	1,031	C6T34WC10	49	208-230/460	7.6	84.0	1.15	13.25	S, US

Specifications are subject to change without notice

♥ Note listing on inside back flap

Three Phase - TEFC - C Face With Base - Threaded Shaft

HP	SYN RPM 60 Hz	NEMA Frame	Catalog Number	Stock	List Price	Model Number	App. Wgt. (lbs)	Voltage	F. L. Amps @ 230 V	% F.L. Eff.	Service Factor	"C" Dim. (Inches)	♥Notes
3/4	3600	56J	116779.00	✓	714	C6T34WK12	24	208-230/460	2.4	75.5	1.15	10.81	S, US
1	3600	56J	116780.00	✓	829	C6T34WK13	36	208-230/460	3.2	77.0	1.15	10.81	S, US
1 1/2	3600	56J	116781.00	✓	899	C6T34WK11	43	208-230/460	4.2	81.5	1.15	11.81	S, US
2	3600	56J	116782.00	✓	999	C6T34WK10	48	208-230/460	5.6	82.5	1.15	12.31	S, US
3	3600	56J	116783.00	✓	1,064	C6T34WK9	50	208-230/460	7.6	84.0	1.15	13.25	S, US

Specifications are subject to change without notice

♥ Note listing on inside back flap

View On-line Technical Information



Explosion Proof Motors

Automotive Duty Motors

Pump Motors

Washguard® Motors

Agricultural Motors

HVAC / Fan Motors

Special Voltage Motors

Definite Purpose Motors

Brake Motors

Washguard® Motors

Washdown Duty Brakemotors

White Epoxy Painted



Washguard® Brakemotors - TENV/TEFC - C Face With Base

HP	SYN RPM 60 Hz	NEMA Frame	Brake Rating (ft-lbs)	Catalog Number	Stock	List Price	Model Number	App. Wgt. (lbs)	Voltage	F. L. Amps @ 230 V	% F.L. Eff.	Service Factor	"C" Dim. (Inches)	♥Notes
1/3	1800	56C	3	116466.00	√	1,381	C6T17VK28	40	208-230/460	1.3	72.00	1.15	14.00	S, US, 12
1/2	1800	56C	3	116467.00	√	1,408	C6T17VK30	42	208-230/460	1.8	78.50	1.15	14.50	S, US, 12
3/4	1800	56C	6	116468.00	√	1,670	C6T17VK29	44	208-230/460	2.5	80.00	1.15	15.00	S, US, 12
1	1800	56C	6	116469.00	√	1,726	C6T17VK27	48	208-230/460	3.2	80.00	1.15	15.50	S, US, 12
	1800	143TC	6	121616.00	√	1,726	C143T17VK7	49	208-230/460	3.2	80.00	1.15	16.06	S, US, 12
1 1/2	1800	145TC	10	G121617.00	√	2,392	C145T17WK22	50	208-230/460	4.4	84.00	1.15	19.01	S, US, 13
2	1800	145TC	10	G121618.00	√	2,481	C145T17WK21	62	208-230/460	5.6	84.00	1.15	19.01	S, US, 13

Note 12 - TENV

Specifications are subject to change without notice

♥ Note listing on inside back flap

Washguard® Brakemotors - TENV/TEFC - C Face Less Base

HP	SYN RPM 60 Hz	NEMA Frame	Brake Rating (ft-lbs)	Catalog Number	Stock	List Price	Model Number	App. Wgt. (lbs)	Voltage	F. L. Amps @ 230 V	% F.L. Eff.	Service Factor	"C" Dim. (Inches)	♥Notes
1/3	1800	56C	3	116462.00	√	1,332	C6T17VC43	39	208-230/460	1.3	72.00	1.15	14.00	S, US, 12
1/2	1800	56C	3	116463.00	√	1,365	C6T17VC42	41	208-230/460	1.8	78.50	1.15	14.50	S, US, 12
3/4	1800	56C	6	116464.00	√	1,625	C6T17VC44	43	208-230/460	2.5	80.00	1.15	15.00	S, US, 12
1	1800	56C	6	116465.00	√	1,683	C6T17VC45	45	208-230/460	3.2	80.00	1.15	15.50	S, US, 12
	1800	143TC	6	121613.00	√	1,683	C143T17VC8	46	208-230/460	3.2	80.00	1.15	15.56	S, US, 12
1 1/2	1800	145TC	10	121614.00	√	2,332	C145T17WC20	49	208-230/460	5.0	78.50	1.15	18.01	S, US, 13
2	1800	145TC	10	121615.00	√	2,398	C145T17WC19	61	208-230/460	6.2	81.50	1.15	18.51	S, US, 13

Note 12 - TENV

Specifications are subject to change without notice

♥ Note listing on inside back flap



View On-line Technical Information



Washguard® Motors

Washdown Duty Brakemotors

White Epoxy Painted

Explosion Proof Motors

Automotive Duty Motors

Pump Motors

Washguard® Motors

Agricultural Motors

HVAC / Fan Motors

Special Voltage Motors

Definite Purpose Motors

Brake Motors

Washguard® Coupler Brakes

Larger coupler brakes on page 274.

Solid die-cast aluminum Stearns NEMA 4X coupler brake converts any TEFC or TENV 56C thru 145TC motor to a fail-safe brakemotor by mounting between the C-face motor and driven equipment. Food safe white epoxy finish. BISSC Certified. Adds 5" to the overall length of 56C thru 145TC WASHGUARD® TEFC or TENV motors. Includes all mounting components.



For Both Single and Three Phase Motors

Cat. No. 115/230V Single Phase	List Price	Cat. No. 230/460V Three Phase	List Price	Cat. No. 575V Three Phase	List Price	Brake Rating (ft-lbs)	Max. HP @ 1725 rpm	Mounts to NEMA Frame	Coupler Brake Output Shaft and Face	App. Wt. (lbs.)
175566.00	1,220	175567.00	1,220	175568.00	1,220	3	1	56C	5/8", 56C	13.0
175572.00	1,313	175573.00	1,313	175574.00	1,313	6	2	56C/143-5TC	5/8", 56C	14.0

Specifications are subject to change without notice

Washguard® Brakekits™

Kit of components including a Stearns NEMA 4X brake to convert 56 thru 145T frame stock TEFC only motors to fail-safe brakemotors. Food safe white epoxy finish. BISSC Certified. Adds 5 1/8" to the overall length of 56 thru 145T WASHGUARD® TEFC motors.



For 230/460V Three Phase and 230V Single Phase Motors

Brake Rating (ft-lbs)	Mounts to NEMA Frame	Max. HP @ 1725rpm	Cat. No. 230/460 V Brake Coil Voltage	List Price	(lbs.)
3	56/143-5T	1	175771.00*	1,356	24
6	56/143-5T	2	175772.00*	1,429	36
10	56/143-5T	3	175773.00*	1,506	43

* For 56/145 frame motors having a "B" for the suffix letter for the date code and having a face mount fan guard.

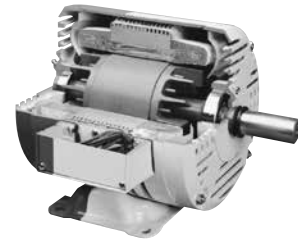
Specifications are subject to change without notice



Washguard Motors

Lincoln Wash -Thru™ Motors

230/460 Volts - Three Phase - Foot Mount & C Face



Features:

- Pressure encapsulation technology - winding endcoils totally encapsulated
- 303 Stainless shaft
- Double sealed bearings
- FDA approved white finish coat
- Stainless laser etched nameplate

Applications:

Exceptional choice for demanding uses in poultry, seafood, meat and other food processing plants. Other applications include areas where a high degree of dust, moisture, and vibration exist.

Three Phase - Drip-Proof - Rigid Base - Encapsulated

HP	SYN RPM 60 Hz	NEMA Frame	▼ Catalog Number	Stock	List Price	Model Number	App. Wgt. (lbs)	Voltage	F. L. Amps @ 230 V	% F.L. Eff.	Service Factor	"C" Dim. (Inches)	♥ Notes
1/2	3600	56	LM21031	C/A	975	SREW2S0.5T61	30	230/460	2.4	70.0	1.00	—	S, US
	1800	56	LM20655	C/A	1,051	SREW4S0.5T61	26	230/460	—	68.0	1.00	10.44	S, US
3/4	3600	56	LM21034	√	1,034	SREW2S0.75T61	30	230/460	—	74.0	1.00	—	S, US
	1800	56	LM20658	C/A	1,090	SREW4S0.75T61	24	230/460	—	75.5	1.00	—	S, US
1	3600	56	LM21037	C/A	1,124	SREW2S1T61	30	230/460	3.2	78.5	1.00	11.44	S, US
	1800	56	LM21061	C/A	1,141	SREW4S1T61	30	230/460	3.2	77.0	1.00	10.44	S, US
1 1/2	3600	56	LM21040	C/A	1,199	SREW2S1.5T61	30	230/460	—	78.5	1.00	—	S, US
	3600	143T	LM21046	√	1,247	SSEW2S1.5T61	35	230/460	4.6	78.5	1.00	11.49	S, US
	1800	56H	LM21062	C/A	1,189	SREW4S1.5T61	30	230/460	4.8	80.0	1.00	10.94	S, US
	1800	145T	LM20670	C/A	1,189	SSEW4S1.5T61	35	230/460	4.8	80.0	1.00	10.99	S, US
2	3600	145T	LM21049	C/A	1,390	SSEW2S2T61	35	230/460	6.6	82.5	1.00	10.99	S, US
	1800	56H	LM21063	√	1,458	SREW4S2T61	34	230/460	6.2	81.5	1.00	10.94	S, US
	1800	145T	LM20673	√	1,423	SSEW4S2T61	35	230/460	6.2	81.5	1.00	11.99	S, US
3	3600	182T	LM21052	√	1,660	SSEW2S3T61	64	230/460	—	81.5	1.00	—	S, US
	1800	182T	LM20676	√	1,857	SSEW4S3T61	64	230/460	7.8	89.5	1.00	14.22	S, US
5	3600	184T	LM21055	C/A	2,349	SSEW2S5T61	70	230/460	12.4	81.5	1.00	14.22	S, US
	1800	184T	LM20679	C/A	2,112	SSEW4S5T61	70	230/460	13.2	87.5	1.00	14.22	S, US
7 1/2	3600	213T	LM22423	√	2,924	SSEW2S7.5T61	109	230/460	19.0	81.5	1.00	17.30	S, US
	1800	213T	LM22435	√	2,688	SSEW4S7.5T61	109	230/460	19.2	81.5	1.00	15.80	S, US
10	3600	215T	LM22426	√	3,488	SSEW2S10T61	125	230/460	24.0	84.0	1.00	17.30	S, US
	1800	215T	LM22438	C/A	3,071	SSEW4S10T61	125	230/460	25.0	84.0	1.00	17.30	S, US

▼ LM Numbers are Lincoln Models

C/A - Check Availability

Specifications are subject to change without notice

♥ Note listing on inside back flap



View On-line Technical Information

Washguard Motors

Lincoln Wash -Thru™ Motors

Three Phase - Drip-Proof - C Face Less Base

HP	SYN RPM 60 Hz	NEMA Frame	▼ Catalog Number	Stock	List Price	Model Number	App. Wgt. (lbs)	Voltage	F. L. Amps @ 230 V	% F.L. Eff.	Service Factor	"C" Dim. (Inches)	♥ Notes
1/2	3600	56C	LM21033	C/A	1,027	SREW2S0.5TCN61	35	230/460	—	70.0	1.00	—	S, US
	1800	56C	LM20657	√	1,105	SREW4S0.5TCN61	35	230/460	2.4	74.0	1.00	10.43	S, US
3/4	3600	56C	LM21036	C/A	1,088	SREW2S0.75TCN61	35	230/460	—	74.0	1.00	—	S, US
	1800	56C	LM20660	√	1,142	SREW4S0.75TCN61	35	230/460	3.0	77.0	1.00	10.43	S, US
1	3600	56C	LM21039	C/A	1,177	SREW2S1TCN61	35	230/460	3.2	75.5	1.00	10.43	S, US
	1800	56C	LM20662	C/A	1,192	SREW4S1TCN61	35	230/460	3.6	78.5	1.00	10.93	S, US
	1800	143TC	LM20669	C/A	1,192	SSEW4S1TCN61	40	230/460	3.6	78.5	1.00	10.99	S, US
1 1/2	3600	56C	LM21042	C/A	1,253	SREW2S1.5TCN61	35	230/460	—	78.5	1.00	—	S, US
	3600	143TC	LM21048	C/A	1,297	SSEW2S1.5TCN61	40	230/460	—	78.5	1.00	—	S, US
	1800	56HC	LM20664	C/A	1,245	SREW4S1.5TCN61	35	230/460	4.8	80.0	1.00	10.93	S, US
	1800	145TC	LM20672	C/A	1,245	SSSEW4S1.5TCN61	40	230/460	4.8	80.0	1.00	10.99	S, US
2	3600	56HC	LM21045	C/A	1,388	SREW2S2TCN61	40	230/460	6.6	78.5	1.00	10.93	S, US
	3600	145TC	LM21051	C/A	1,441	SSEW2S2TCN61	40	230/460	6.6	78.5	1.00	10.99	S, US
	1800	56HC	LM20666	C/A	1,510	SREW4S2TCN61	40	230/460	6.2	81.5	1.00	11.93	S, US
1800	145TC	LM20675	√	1,475	SSEW4S2TCN61	40	230/460	6.2	81.5	1.00	11.99	S, US	

▼ LM Numbers are Lincoln Models

♥ Note listing on inside back flap

C/A - Check Availability

Specifications are subject to change without notice

Explosion Proof Motors

Automotive Duty Motors

Pump Motors

Washguard® Motors

Agricultural Motors

HVAC / Fan Motors

Special Voltage Motors

Definite Purpose Motors

Brake Motors

View On-line Technical Information



Washguard® Motors

DC Washdown Duty Motors

White Epoxy Painted



DC - SCR Rated 90 & 180 Volts - TENV - C Face with Removable Base

HP	Full Load RPM	NEMA Frame	Catalog Number	Stock	List Price	Model Number	App. Wgt. (lbs)	Arm. Volts DC	Control Volts AC Input	F. L. Amps DC	"C" Dim. (Inches)	♥Notes
1/4	1750	S56C	108423.00	✓	808	C4D17VK9C	23	90	115.0	2.7	10.69	S, US, 12
	1750	SS56C	098375.00	C/A	808	C42D17VK1	21	180	230.0	1.4	10.22	S, US, 12
1/3	1750	S56C	108424.00	✓	855	C4D17VK10	26	90	115.0	3.5	11.69	S, US, 12
	1750	SS56C	098376.00	C/A	855	C42D17VK2	22	180	230.0	1.7	10.22	S, US, 12
1/2	1750	S56C	108226.00	✓	958	C4D17VK1	38	90	115.0	4.9	13.69	S, US, 12
	1750	S56C	108227.00	✓	958	C4D17VK2	43	180	230.0	2.4	13.69	S, US, 12
3/4	1750	S56C	108228.00	✓	1,163	C4D17VK3	53	90	115.0	7.0	15.69	S, US, 12
	1750	S56C	108229.00	✓	1,163	C4D17VK4	50	180	230.0	3.5	15.69	S, US, 12
1	1750	S56C	108230.00	✓	1,417	C4D17WK1	45	90	115.0	10.0	15.81	S, US, 13
	1750	S56C	108231.00	✓	1,417	C4D17WK2	42	180	230.0	5.0	14.81	S, US, 13
1 1/2	1750	S56C	108232.00	✓	1,810	C4D17WK3	50	180	230.0	7.6	15.81	S, US, 13

Note 13 - TEFC

C/A - Check Availability

Specifications are subject to change without notice

♥ Note listing on inside back flap

Washguard® - DC - IEC Frame

180 Volts - TENV IP55 - B5 Flange With Removable B3 Base

HP/ kW	Full Load RPM	NEMA Frame	Catalog Number	Stock	List Price	Model Number	App. Wgt. (lbs)	Arm. Volts DC	Control Volts AC Input	F. L. Amps DC	"C" Dim. (Inches)	♥Notes
1/2 - .37	1750	71	098040.00	C/A	847	42D17VD1	22	180	230.0	2.5	10.69	S, US
3/4 - .55	1750	80	108407.00	C/A	1,148	4D17VD1	52	180	230.0	3.5	16.02	S, US

C/A - Check Availability

Specifications are subject to change without notice

♥ Note listing on inside back flap

If base is removed, do not reinstall bolts without using washers to compensate for the thickness of base.

These WASHGUARD® motors are modular design but stocked with B5 flange and B3 foot. The foot is removable. The B5 flange can be replaced with a B14 face or other diameter B5 flanges noted on page 175.

All Washdown Duty Motors Have Class F Insulation.



View On-line Technical Information



Washguard® Motors

SUB-FHP IP55 Washguard® Motors

White Epoxy Painted

Explosion Proof Motors

Automotive Duty Motors

Pump Motors

Washguard® Motors

Agricultural Motors

HVAC / Fan Motors

Special Voltage Motors

Definite Purpose Motors

Brake Motors

General Specifications:

Precision subfractional horsepower DC permanent magnet motors. Designed for use with fullwave non-filtered SCR controls or battery supplied low voltage for adjustable speed applications requiring constant torque throughout the speed range.

Features:

- 303 Stainless steel shaft resists corrosion
- Lubricated spring loaded contact seals prevent moisture from entering the motor
- Double sealed, Oversize bearings with high temp lubricant
- Exterior and interior components protected against moisture, acids, alkalies and oil
- Cast conduit box for superior sealing includes:
 - Threaded conduit entrance
 - Drain holes
 - Nitrile gaskets
 - 304 stainless steel conduit box cover
 - Stainless steel hardware
- USDA Approved white epoxy finish
- Nylon seals at bolt heads for superior sealing
- O ring sealed brush covers



90 Volts DC - TENV - Square Flange Less Feet

HP	Full Load RPM	NEMA Frame	▼ Catalog Number	Stock	List Price	Model Number	App. Wgt. (lbs)	Arm. Volts DC	Control Volts AC Input	F. L. Amps DC	"C" Dim. (Inches)	♥Notes
1/8	1750	31S	M1120181.00	√	502	M31D17VZ1	11	90	115.0	1.5	8.57	S, US
1/6	1750	31S	M1120183.00	√	509	M31D17VZ3	11	90	115.0	1.9	10.07	S, US
1/4	2500	32F42CZ	M1120185.00	√	554	M32D25VC1	13	90	115.0	1.9	10.00	S, US

Specifications are subject to change without notice

♥ Note listing on inside back flap

Low Voltage - 12 Volt - TENV - Square Flange or C Face

HP	Full Load RPM	NEMA Frame	▼ Catalog Number	Stock	List Price	Model Number	App. Wgt. (lbs)	Arm. Volts DC	F. L. Amps DC	"C" Dim. (Inches)	♥Notes
1/8	1750	31S	M1120182.00	√	523	M31D17VZ2	7	12	10.5	8.1	S, US
1/6	1750	31S	M1120184.00	√	530	M31D17VZ4	11	12	14.5	9.6	S, US
1/4	2500	32F42CZ	M1120186.00	√	575	M32D25VC2	13	12	20.0	9.5	S, US

Specifications are subject to change without notice

♥ Note listing on inside back flap

View On-line Technical Information



Washguard® Motors

IP55 Washguard® Gearmotors - Parallel Shaft White Epoxy Painted



General Specifications - SCR rated Gearmotors:

- Performance matched for continuous duty service over 60:1 speed range
- Constant torque throughout the range when powered by a full-wave unfiltered SCR-type adjustable speed control having a typical form factor of 1.3 to 1.4

General Specifications - Low voltage Gearmotors:

- Performance matched for continuous duty service
- Designed for battery power or can be used with a low voltage controller with form factor up to 1.05

Features:

- Gearbox output shafts are coated with Miroton 3300 fortified Teflon for superior corrosion resistance
- Frame, endshields, armature and interior components protected by enamel and polyester compounds for resistance to moisture, acids, alkalies and oil
- Precision machined in-line steel gears
- First stage steel helical gear followed by spur-type gears
- Lubrication is permanent semi-fluid grease, reducing possibility of leakage
- Output shafts have needle bearings for high load capacities
- Gearbox Shafts are hardened steel
- Cast conduit box with threaded conduit holes and Nitrile gaskets keep water out
- Conduit box cover is made from 304 stainless steel
- For any condensation that may accumulate inside the motor, a one-way stainless steel vapor vent is provided
- All hardware is stainless steel
- Painted with white epoxy for superior corrosion resistance and protection
- Machined fits between the endbells and motor frame are sealed with gaskets
- Thru-bolt heads and nuts sealed with fiber washers
- O-rings under each threaded brush cover

Application Notes :

- Extended life in wet, high humidity applications
- Design repels water from entering motor
- Internal components protected against rust and corrosion
- These gearmotors are designed for mounting at any angle, but motor below the reducer should be avoided to prevent leakage of lubricant into the motor should the motor shaft seal fail
- Overhung load capacities shown are at center of output shaft
- Motor's stall torque could exceed recommended full load torques. A current limiting device such as an SCR control should be used to prevent damage. This issue is even more critical for low voltage motors, typically no controller is used since motor is connected directly to a battery, so some type of current limit or fusing should be considered.
- USDA approved white epoxy finish
- **Bison/Dayton direct interchange**



Washguard® Motors

IP55 Washguard® Gearmotors - Parallel Shaft

White Epoxy Painted

P300 Series - SCR RATED - 90V - Parallel Shaft - TENV - 1.0 Service Factor

Output RPM	F.L Torque (Lb.In.)	Input HP	Catalog Number	Stock	List Price	Model Number	Gearmotor Type & Frame	Ratio to 1	DC Arm. Volts	Full Load Amps DC	Over-hung Load (Lbs.)
5	353	1/20	M1125261.00	✓	854	CM31D17VZ5	P303-31	336	90	0.8	565
31	220	1/8	M1125262.00	✓	877	CM31D17VZ6	P303-31	58	90	1.6	327
51	130	1/8	M1125263.00	✓	811	CM31D17VZ7	P302-31	35	90	1.6	277
94	77	1/8	M1125264.00	✓	811	CM31D17VZ8	P302-31	19	90	1.6	236
167	43	1/8	M1125265.00	✓	811	CM31D17VZ9	P302-31	11	90	1.6	197

P	PB	X Inches	XL	XH
3.13	3.8	3.54	10.44	8.94
3.13	3.8	3.54	11.94	10.44
3.13	3.8	3.54	11.94	10.44
3.13	3.8	3.54	11.94	10.44
3.13	3.8	3.54	11.94	10.44

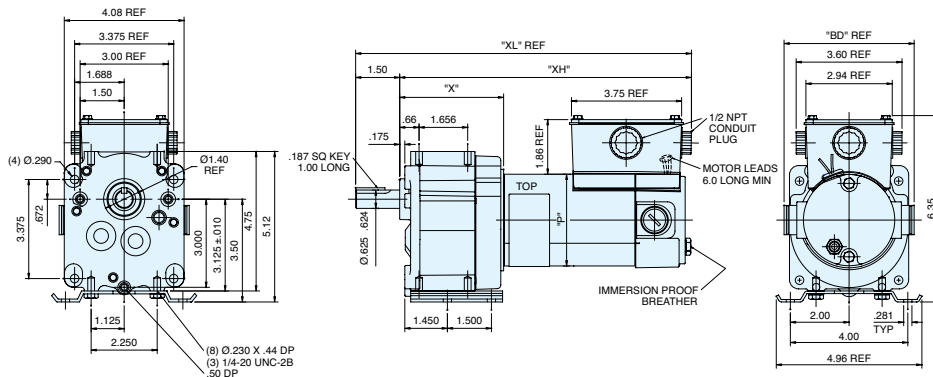
Specifications are subject to change without notice

P300 Series - Low Voltage (12V) - Parallel Shaft - TENV - 1.0 Service Factor

Output RPM	F.L Torque (Lb.In.)	Input HP	Catalog Number	Stock	List Price	Model Number	Gearmotor Type & Frame	Ratio to 1	DC Arm. Volts	Full Load Amps DC	Over-hung Load (Lbs.)
5	353	1/20	M1125266.00	✓	877	CM31D17VZ10	P303-31	336	12	6.4	565
31	220	1/8	M1125267.00	✓	899	CM31D17VZ11	P303-31	58	12	11.0	327

P	PB	X Inches	XL	XH
3.13	3.8	3.54	10.44	8.94
3.13	4.43	3.54	11.94	9.94

Specifications are subject to change without notice



View On-line Technical Information



- Explosion Proof Motors
- Automotive Duty Motors
- Pump Motors
- Washguard® Motors
- Agricultural Motors
- HVAC / Fan Motors
- Special Voltage Motors
- Definite Purpose Motors
- Brake Motors

Washguard® Motors

IP55 Washguard® Gearmotors - Parallel Shaft White Epoxy Painted



General Specifications - SCR rated Gearmotors:

- Performance matched for continuous duty service over 60:1 speed range
- Constant torque throughout the range when powered by a full-wave unfiltered SCR-type adjustable speed control having a typical form factor of 1.3 to 1.4

General Specifications - Low voltage Gearmotors:

- Performance matched for continuous duty service
- Designed for battery power or can be used with a low voltage controller with form factor up to 1.05

Features:

- Gearbox output shafts are coated with Mirolon 3300 fortified Teflon for superior corrosion resistance
- Frame, endshields, armature and interior components protected by enamel and polyester compounds for resistance to moisture, acids, alkalies and oil
- Precision machined in-line steel gears
- First stage steel helical gear followed by spur-type gears
- Lubrication is permanent semi-fluid grease, reducing possibility of leakage
- Output shafts have needle bearings for high load capacities
- Gearbox Shafts are hardened steel
- Cast conduit box with threaded conduit holes and Nitrile gaskets keep water out
- Conduit box cover is made from 304 stainless steel
- For any condensation that may accumulate inside the motor, a one-way stainless steel vapor vent is provided
- All hardware is stainless steel
- Painted with white epoxy for superior corrosion resistance and protection
- Machined fits between the endbells and motor frame are sealed with gaskets
- Thru-bolt heads and nuts sealed with fiber washers
- O-rings under each threaded brush cover

Application Notes :

- Extended life in wet, high humidity applications
- Design repels water from entering motor
- Internal components protected against rust and corrosion
- These gearmotors are designed for mounting at any angle, but motor below the reducer should be avoided to prevent leakage of lubricant into the motor should the motor shaft seal fail
- Overhung load capacities shown are at center of output shaft
- Motor's stall torque could exceed recommended full load torques. A current limiting device such as an SCR control should be used to prevent damage. This issue is even more critical for low voltage motors, typically no controller is used since motor is connected directly to a battery, so some type of current limit or fusing should be considered.
- USDA approved white epoxy finish
- **Bodine/Baldor direct interchange**



Washguard® Motors

IP55 Washguard® Gearmotors - Parallel Shaft

White Epoxy Painted

TENV - 1.0 Service Factor - SCR Rated 90V

Output RPM	F.L Torque (Lb.In.)	Input HP	Catalog Number	Stock	List Price	Model Number	Gearmotor Type & Frame	Ratio to 1	DC Arm. Volts	Full Load Amps DC	Over-hung Load (Lbs.)
14	341	1/8	M1125268.00	✓	884	M31D25VZ1	P353-31	180	90	1.5	465
42	280	1/4	M1125269.00	✓	915	M32D25VZ1	P353-32	58	90	2.6	327
83	155	1/4	M1125270.00	✓	891	M32D25VZ2	P353-32	29	90	2.6	267
250	45	1/4	M1125271.00	✓	891	M32D25VZ3	P352-32	10	90	2.6	201
500	25	1/4	M1125272.00	✓	891	M32D25VZ4	P352-32	5	90	2.6	194

P	PB	X Inches	XL	XH
3.13	3.8	3.45	11.84	9.84
3.25	3.8	3.45	13.84	11.84
3.25	3.8	3.45	13.84	11.84
3.25	3.8	3.45	13.84	11.84
3.25	3.8	3.45	13.84	11.84

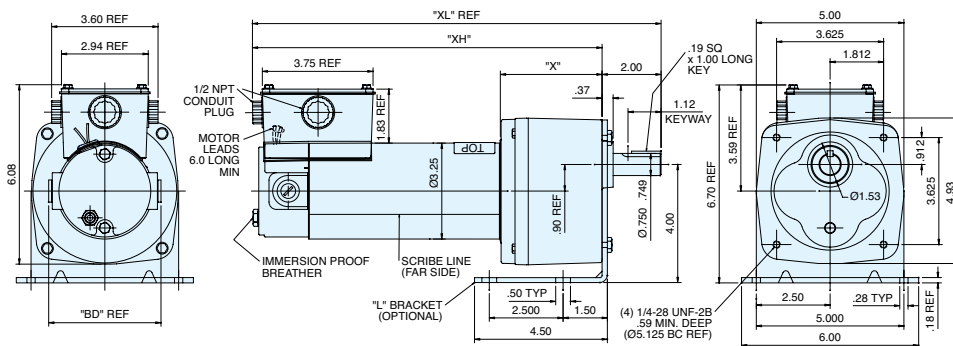
Specifications are subject to change without notice

PE350 Series Parallel Shaft - TENV - 1.0 Service Factor - Low Voltage 12V

Output RPM	F.L Torque (Lb.In.)	Input HP	Catalog Number	Stock	List Price	Model Number	Gearmotor Type & Frame	Ratio to 1	DC Arm. Volts	Full Load Amps DC	Over-hung Load (Lbs.)
14	341	1/8	M1125273.00	✓	906	M31D25VZ2	P353-31	180	12	12.0	465
42	325	1/4	M1125274.00	✓	957	M32D25VZ5	P353-32	58	12	20.0	327

P	PB	X Inches	XL	XH
3.13	4.43	3.45	11.58	9.58
3.25	4.43	3.45	13.84	11.84

Specifications are subject to change without notice



View On-line Technical Information



Explosion Proof Motors

Automotive Duty Motors

Pump Motors

Washguard® Motors

Agricultural Motors

HVAC / Fan Motors

Special Voltage Motors

Definite Purpose Motors

Brake Motors

Washguard® Motors

IP55 Washguard® Right Angle Gearmotors White Epoxy Painted



General Specifications - SCR rated Gearmotors:

- Performance matched for continuous duty service over 60:1 speed range
- Constant torque throughout the range when powered by a full-wave unfiltered SCR-type adjustable speed control having a typical form factor of 1.3 to 1.4

General Specifications - Low voltage Gearmotors:

- Performance matched for continuous duty service
- Designed for battery power or can be used with a low voltage controller with form factor up to 1.05

Features:

- 303 Stainless Steel gearbox output shaft
- Frame, endshields, armature and interior components protected by enamel and polyester compounds for resistance to moisture, acids, alkalies and oil
- Cast conduit box with threaded conduit holes and Nitrile gaskets keep water out
- Conduit box cover is made from 304 stainless steel
- For any condensation that may accumulate inside the motor, a one-way stainless steel vapor vent is provided
- All hardware is stainless steel
- Painted with white epoxy for superior corrosion resistance and protection
- Machined fits between the endbells and motor frame are sealed with gaskets
- Thru-bolt heads and nuts sealed with fiber washers
- O-rings under each threaded brush cover
- Worm-type right-angle gearing features hardened, steel worm with bronze worm wheel for long life and quiet operation
- Precision machined aluminum gear housing
- Lubrication is permanent with an oil bath
- Gearbox has all ball bearings
- Output shaft is field interchangeable from left hand to right hand style by reassembly
- Double output shaft available as a factory option

Application Notes :

- These right-angle gearmotors have a lubrication breather positioned for horizontal mounting. For other mountings, the breather plug must be reoriented by using a 90 deg 1/8" NPT taper pipe elbow (See drawing). Elbow not available from LEESON
- These gearmotors are designed for mounting at any angle, but motor below the reducer should be avoided to prevent leakage of lubricant into the motor should the motor shaft seal fail
- Overhung load capacities shown are at center of output shaft
- For additional information, see Bulletin 1830



Washguard® Motors

IP55 Washguard® Right Angle Gearmotors

White Epoxy Painted

TENV - 1.0 Service Factor - SCR Rated 90V

Output RPM	F.L Torque (Lb.In.)	Input HP	Catalog Number	Stock	List Price	Model Number	Gearmotor Type & Frame	Ratio to 1	DC Arm. Volts	Full Load Amps DC	Over-hung Load (Lbs.)
42	80	1/8	M1125275.00	✓	884	M31D25VZ3	13F60-31	60	90	2.2	235
250	25	1/8	M1125276.00	✓	884	M31D25VZ4	13F10-31	10	90	2.2	235
62	135	1/4	M1125277.00	✓	891	M32D25VZ6	13F40-32	40	90	3.7	235
125	90	1/4	M1125278.00	✓	891	M32D25VZ7	13F20-32	20	90	3.7	235
250	50	1/4	M1125279.00	✓	891	M32D25VZ8	13F10-32	10	90	3.7	235

P	PB	X Inches	XL	XH
3.13	3.8	4.5	10.86	6.36
3.13	3.8	4.5	10.86	6.36
3.25	3.8	4.5	12.86	8.36
3.25	3.8	4.5	12.86	8.36
3.25	3.8	4.5	12.86	8.36

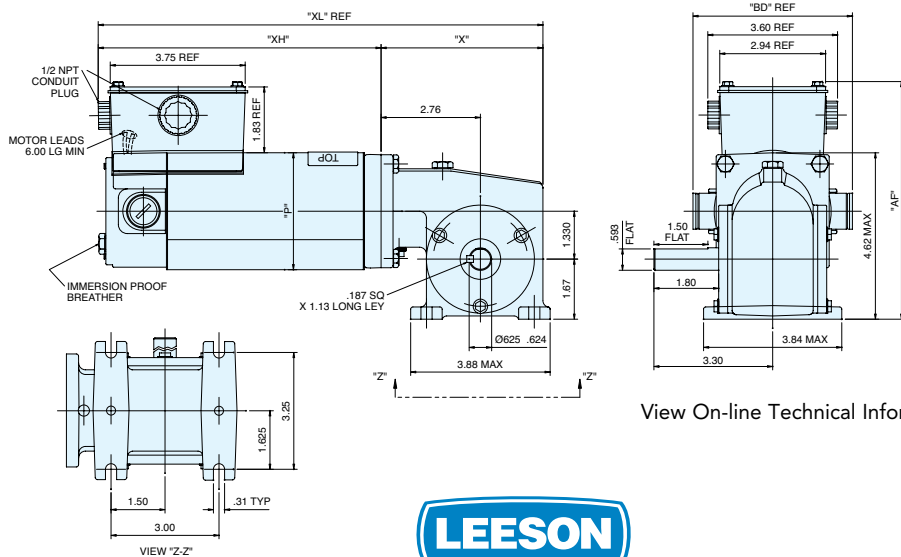
Specifications are subject to change without notice

PE350 Series Parallel Shaft - TENV - 1.0 Service Factor - Low Voltage 12V

Output RPM	F.L Torque (Lb.In.)	Input HP	Catalog Number	Stock	List Price	Model Number	Gearmotor Type & Frame	Ratio to 1	DC Arm. Volts	Full Load Amps DC	Over-hung Load (Lbs.)
62	135	1/4	M1125280.00	✓	846	M32D25VZ9	13F40-32	40	12	28.0	235
125	90	1/4	M1125281.00	✓	846	M32D25VZ10	13F20-32	20	12	28.0	235

P	PB	X Inches	XL	XH
3.25	4.43	4.5	12.36	7.86
3.25	4.43	4.5	12.36	7.86

Specifications are subject to change without notice



View On-line Technical Information



Explosion Proof Motors

Automotive Duty Motors

Pump Motors

Washguard® Motors

Agricultural Motors

HVAC / Fan Motors

Special Voltage Motors

Definite Purpose Motors

Brake Motors

Washguard® Motors

IP55 AC Washguard® Gearmotors

Parallel Shaft - White Epoxy Painted



Features:

- Single phase PSC designs include capacitor inside conduit box
- These gearmotors are designed for mounting at any angle, but motor below the reducer should be avoided to prevent leakage of lubricant into the motor should the motor shaft seal fail
- 304 Stainless steel external shafts
- White epoxy painted motors
- O-rings and gaskets used for sealing
- Hardened Worm-type gearing used
- Interior components protected against corrosion
- Ball bearings used in gear housing
- Sealed output shafts
- Output shafts have needle bearings for high load capacities
- UL listed and CSA certified
- **Bison/Dayton direct interchange**



P240 series AC Washdown Duty Gearmotors

Output RPM	F.L Torque (Lb.In.)	Input HP	Catalog Number	Stock	List Price	Model Number	Gearmotor Type & Frame	Ratio to 1	Voltage	Phase	F.L. Amps @ 230 V	Over-hung Load (Lbs.)
16	391	5/32	M1145138.00	✓	910	CM38P17FZ39	P240	103	115/230	1	1.05	399
40	219	5/32	M1145139.00	✓	910	CM38P17FZ40	P240	43	115/230	1	1.00	303
156	60	5/32	M1145140.00	✓	835	CM38P17FZ41	P240	10.6	115/230	1	1.00	201
16	391	1/6	M1145144.00	✓	910	CM38T17FZ20	P240	103	230	3	0.72	237
30	295	1/6	M1145145.00	✓	910	CM38T17FZ21	P240	58	230	3	0.72	237

Specifications are subject to change without notice

♥ Note listing on inside back flap



View On-line Technical Information



Washguard® Motors

IP55 AC Washguard® Gearmotors Right Angle

Features:

- Single phase PSC designs include capacitor inside conduit box
- These gearmotors are designed for mounting at any angle, but motor below the reducer should be avoided to prevent leakage of lubricant into the motor should the motor shaft seal fail
- 304 Stainless steel external shafts
- White epoxy painted motors
- O-rings and gaskets used for sealing
- Hardened Worm-type gearing used
- Interior components protected against corrosion
- Ball bearings used in gear housing
- Sealed output shafts
- Output shafts have needle bearings for high load capacities
- UL listed and CSA certified



Right Angle Series AC Washdown Duty Gearmotors

Output RPM	F.L Torque (Lb.in.)	Input HP	Catalog Number	Stock	List Price	Model Number	Gearmotor Type & Frame	Ratio to 1	Voltage	Phase	F.L. Amps @ 230 V	Over-hung Load (Lbs.)
43	113	1/6	M1145141.00	✓	764	CM38P17FZ42	Right-Angle	40	115/230	1	1.00	235
83	75	1/6	M1145142.00	✓	938	CM38P17FZ43	Right-Angle	20	115/230	1	1.00	235
340	23	1/6	M1145143.00	✓	938	CM38P17FZ44	Right-Angle	5	115/230	1	1.40	235
29	220	1/6	M1145146.00	✓	938	CM38T17FZ22	Right-Angle	60	230	3	1.30	235
172	105	1/6	M1145147.00	✓	938	CM38T17FZ23	Right-Angle	10	230	3	1.30	235

Specifications are subject to change without notice

♥ Note listing on inside back flap

Explosion Proof Motors

Automotive Duty Motors

Pump Motors

Washguard® Motors

Agricultural Motors

HVAC / Fan Motors

Special Voltage Motors

Definite Purpose Motors

Brake Motors

View On-line Technical Information



Washguard® Motors

Chemical Resistance Comparison



Explosion Proof
Motors

Automotive
Duty Motors

Pump
Motors

Washguard®
Motors

Agricultural
Duty Motors

HVAC / Fan
Motors

Special Voltage
Motors

Definite
Purpose Motors

Brake Motors

Chemical Name	% Concentration	Exposure	White Epoxy	Stainless Steel
Fresh Water	100	Continuous	Excellent	Excellent
Salt Water	5	Continuous	Excellent	Excellent
Salt Brine	Dilute	Continuous	Fair	Good
Ammonium Hydroxide	Dilute	Continuous	Good	Excellent
Calcium Hydroxide (Lime)	100	Intermittent	Good	Excellent
Citric Acid	10	Continuous	Good	Excellent
Ethylene Glycol	100	Continuous	Excellent	Excellent
Hydrochloric Acid	37	Intermittent	Good	Poor
Lactic Acid	Dilute	Intermittent	Excellent	Excellent
Lactic Acid	100	Intermittent	Fair	Fair
Mineral Spirits	100	Continuous	Excellent	Excellent
Potassium Hydroxide	50	Intermittent	Fair	Fair
Sodium Hydroxide	5	Continuous	Fair	Excellent
Sodium Hydroxide	20	Continuous	Fair	Excellent
Sodium Hydroxide	50	Continuous	Excellent	Excellent
Sodium Hypochlorite (Bleach)	15	Intermittent	Excellent	Excellent
Sulfuric Acid	10	Intermittent	Fair	Fair
Toluene	100	Continuous	Fair	Fair
Animal Fats	NA	Continuous	Excellent	Excellent
Mineral Oils	NA	Continuous	Excellent	Excellent
Vegetable Oils	NA	Continuous	Excellent	Excellent
Cutting Oils	NA	Continuous	Excellent	Excellent
Detergents	NA	Continuous	Excellent	Excellent
Gasoline	NA	Continuous	Fair	Fair
Hydraulic Fluid	NA	Continuous	Excellent	Excellent
Lubricating Oils	NA	Continuous	Excellent	Excellent
General Weathering	NA	Continuous	Fair	Excellent
Mold/Mildew	NA	Continuous	Excellent	Excellent
Light Abrasion	NA	Continuous	Excellent	Excellent
Heavy Abrasion	NA	Continuous	Fair	Excellent



Typical applications include food processing areas requiring frequent sanitation procedures using high pressure cleaning with concentrated caustic solutions, areas of high humidity and in chemical environments.

Features:

- Paint free exterior
- BISSC certified for the Baking Industry
- Stainless Steel Output shafts
- Repositional drain plugs for all angle mounting
- Double Sealed bearings
- Output shaft seal
- Inverter Duty IRIS™ insulation system



Stainless Frame - TENV - C Face Less Base

HP	SYN RPM 60 Hz	NEMA Frame	Catalog Number	Stock	List Price	Model Number	App. Wgt. (lbs)	Voltage	F. L. Amps @ 230 V	% F.L. Eff.	Service Factor	"C" Dim. (Inches)	♥Notes
1/2	1800	56C	114394.00	√	814	CZ6T17VC10	30	208-230/460	1.6	78.5	1.15	11.06	S, US, 12
3/4	1800	56C	114395.00	√	942	CZ6T17VC11	34	208-230/460	2.3	80.0	1.15	11.56	S, US, 12
1	1800	56C	114437.00	√	978	CZ6T17VC12	44	208-230/460	3.0	81.5	1.15	12.06	S, US, 12
	1800	143TC	121109.00	√	978	CZ143T17VC2	40	208-230/460	3.0	81.5	1.15	12.13	S, US, 12
1 1/2	1800	56C	114581.00	√	1,025	CZ6T17WC14	45	208-230/460	4.4	84.0	1.15	12.69	S, US, 13
	1800	145TC	G121350.00	√	1,025	CZ145T17WC29	45	208-230/460	4.4	82.5	1.15	13.25	S, US, 13
2	1800	56C	114582.00	√	1,164	CZ6T17WC11	51	208-230/460	5.6	84.0	1.15	13.69	S, US, 13
	1800	145TC	G121351.00	√	1,164	CZ145T17WC30	52	208-230/460	5.6	84.0	1.15	13.75	S, US, 13

Note 12 - TENV

♥ Note listing on inside back flap

Specifications are subject to change without notice

Stainless Frame - TENV - C Face With Base

HP	SYN RPM 60 Hz	NEMA Frame	Catalog Number	Stock	List Price	Model Number	App. Wgt. (lbs)	Voltage	F. L. Amps @ 230 V	% F.L. Eff.	Service Factor	"C" Dim. (Inches)	♥Notes
1/2	1800	56HC	114560.00	√	823	CZ6T17VK3	34	208-230/460	1.6	78.5	1.15	11.56	S, US, 6, 12
3/4	1800	56HC	114561.00	√	951	CZ6T17VK4	38	208-230/460	2.3	80.0	1.15	12.06	S, US, 6, 12
1	1800	56HC	114562.00	√	988	CZ6T17VK5	45	208-230/460	2.3	81.5	1.15	12.06	S, US, 6, 12
	1800	143TC	121165.00	√	988	CZ143T17VK2	45	208-230/460	2.3	81.5	1.15	12.13	S, US, 12
1 1/2	1800	145TC	121912.00	√	1,134	CZ145T14KW40	47	208-230/460	4.4	86.5	1.15	13.25	S, US, 13
2	1800	145TC	121913.00	√	1,326	CZ145T14WK41	54	208-230/460	5.6	86.5	1.25	13.75	S, US, 13

Green items are Premium Efficient

♥ Note listing on inside back flap

Note 12 - TENV

Specifications are subject to change without notice

View On-line Technical Information



Explosion Proof Motors

Automotive Duty Motors

Pump Motors

Washguard® Motors

Agricultural Motors

HVAC / Fan Motors

Special Voltage Motors

Definite Purpose Motors

Brake Motors

Explosion Proof
Motors

Automotive
Duty Motors

Pump
Motors

Washguard®
Motors

Agricultural
Duty Motors

HVAC / Fan
Motors

Special Voltage
Motors

Definite
Purpose Motors

Brake Motors

Washguard® Motors

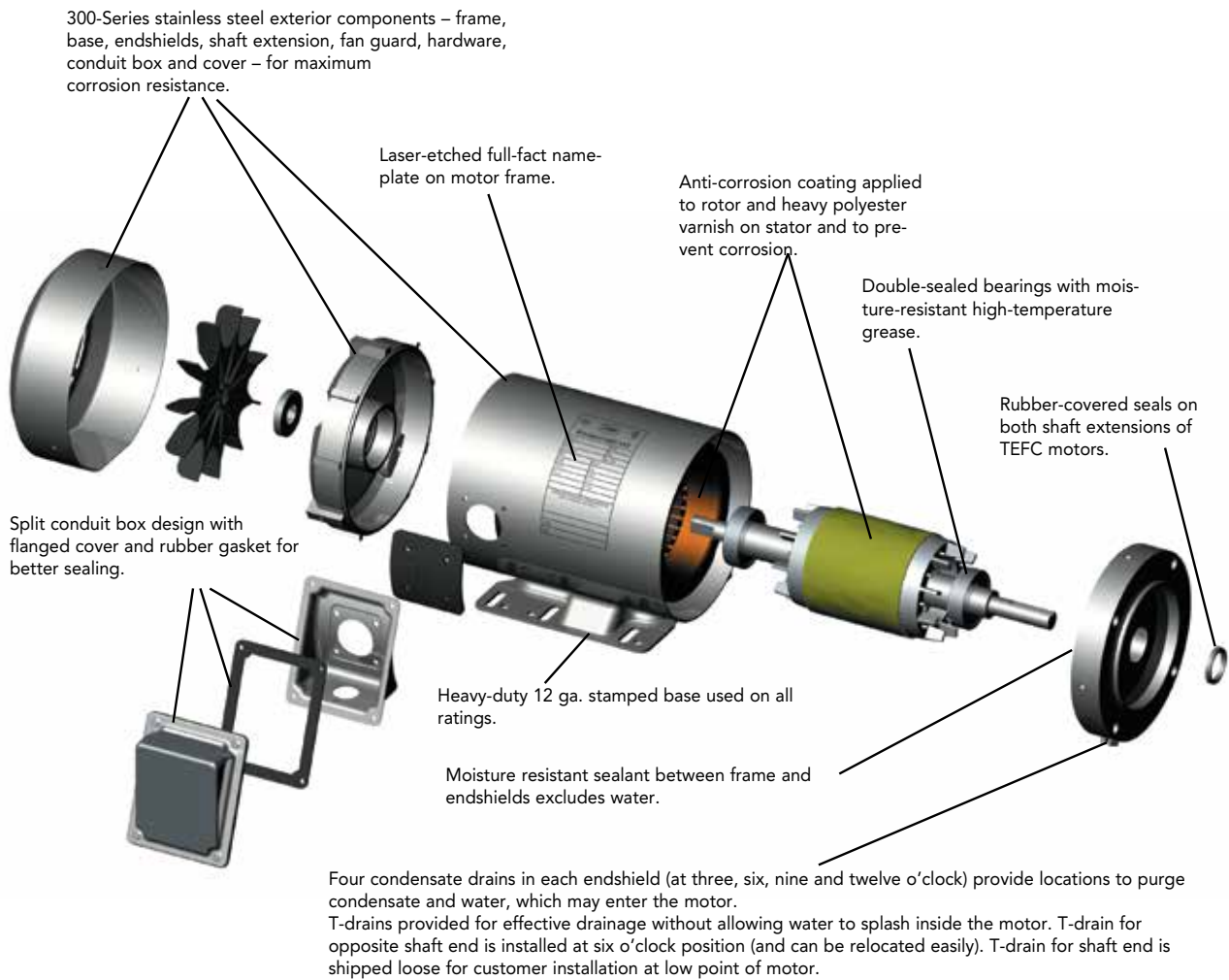
SST - All Stainless Motors

SST StainlessDuck



This member of LEESON's family of tough ducks is designed for long life in demanding washdown applications. LEESON's FHP WASHGUARD® SST All-Stainless motors are Stainless Steel Tough!

Built with all stainless steel external components to prevent corrosion and well sealed against moisture and condensation to protect internal components, the Washguard® SST all-stainless motors are able to withstand the severe washdown environments found in the food processing, chemical processing, and beverage industries.





Washguard® Motors

SST - All Stainless Motors



Single-Phase - TEFC - C Face With Base

HP	SYN RPM 60 Hz	NEMA Frame	Catalog Number	Stock	List Price	Model Number	App. Wgt. (lbs)	Voltage	F. L. Amps @ 230 V	Service Factor	"C" Dim. (Inches)	♥Notes
1/2	3600	56C	191474.00	√	673	C6C34WK18	29.5	115/208-230	3.1	1.15	11.1	S, CN
	1800	56C	191475.00	√	759	C6C17WK14	31.5	115/208-230	4.1	1.15	11.1	S, CN
3/4	3600	56C	191476.00	√	740	C6C34WK19	31.5	115/208-230	4.5	1.15	11.8	S, CN
	1800	56C	191477.00	√	876	C6C17WK15	39	115/208-230	4.9	1.15	11.8	S, CN
1	3600	56C	191478.00	√	870	C6C34WK20	39	115/208-230	6.2	1.15	12.3	S, CN
	1800	56C	191479.00	√	913	C6C17WK16	42.5	115/208-230	6.8	1.15	12.3	S, CN
1 1/2	3600	56C	191480.00	√	957	C6K34WK2	42.5	115/208-230	8.8	1.15	13.2	S, CN
	1800	56C	191481.00	√	954	C6K17WK1	52.5	115/208-230	9.5	1.15	13.2	S, CN
2	3600	145TC	191482.00	√	1235	C145K34WK2	64.5	115/208-230	10.8	1.15	14.2	S, CN
	1800	145TC	191483.00	√	1210	C145K17WK3	64.5	115/208-230	9.0	1.15	14.2	S, CN

Specifications are subject to change without notice

♥ Note listing on inside back flap

Explosion Proof Motors

Automotive Duty Motors

Pump Motors

Washguard® Motors

Agricultural Motors

HVAC / Fan Motors

Special Voltage Motors

Definite Purpose Motors

Brake Motors

View On-line Technical Information



Washguard® Motors

SST - All Stainless Motors



Three-Phase - TENV/TEFC - C Face With Base

HP	SYN RPM 60 Hz	NEMA Frame	Catalog Number	Stock	List Price	Model Number	App. Wgt. (lbs)	Voltage	F. L. Amps @ 230 V	% F.L. Eff.	Service Factor	"C" Dim. (Inches)	♥Notes
1/3	3600	56C	191200.00	✓	667	C6T34NK26	29	208-230/460	1.0	74.0	1.15	9.78	S, CN, 12
	1800	56C	191201.00	✓	747	C6T17NK29	30	208-230/460	1.3	78.5	1.15	9.78	S, CN, 12
1/2	3600	56C	191203.00	✓	683	C6T34NK27	32	208-230/460	1.5	77.0	1.15	9.78	S, CN, 12
	1800	56C	191204.00	✓	770	C6T17NK30	33	208-230/460	1.6	81.5	1.15	9.78	S, CN, 12
	1800	56C	191949.00	✓	770	C6T17NK46	34	208-230/460	1.6	81.5	1.15	13.77	S, CN, 13
	1200	56C	191414.00	✓	837	C6T11NK4	36	208-230/460	2.0	78.5	1.15	9.76	S, CN, 12
3/4	3600	56C	191206.00	✓	750	C6T34NK28	33	208-230/460	2.0	78.5	1.15	9.78	S, CN, 12
	1800	56C	191207.00	✓	886	C6T17NK31	38	208-230/460	2.3	82.5	1.15	9.78	S, CN, 12
	1800	56C	191950.00	✓	886	C6T17NK47	39	208-230/460	2.3	82.5	1.15	13.77	S, CN, 13
	1200	56C	191415.00	✓	963	C6T11NK5	49	208-230/460	3.0	80.0	1.15	11.30	S, CN, 12
	1	3600	56HC	191209.00	✓	880	C6T34FK85	41	208-230/460	2.6	80.0	1.15	13.77
	3600	143TC	191486.00	✓	1,097	C143T34WK10	42	208-230/460	2.6	80.0	1.15	13.62	S, CN, 13
	1800	56C	191291.00	✓	924	C6T17NK38	46	208-230/460	3.0	81.5	1.15	11.00	S, CN, 12
	1800	56HC	191211.00	✓	924	C6T17FK81	47	208-230/460	3.0	82.5	1.15	13.77	S, CN, 6, 13
	1800	143TC	191487.00	✓	1,152	C143T17WK14	48	208-230/460	3.0	85.5	1.15	13.62	S, CN, 13
	1200	56HC	191417.00	✓	1,008	C6T11NK6	49	208-230/460	3.8	82.5	1.15	13.10	S, CN, 13
	1200	145TC	191528.00	✓	1,012	C6T11NK6	49	208-230/460	3.8	82.5	1.15	13.20	S, CN, 13
1 1/2	3600	56HC	191215.00	✓	970	C6T34FK86	48	208-230/460	3.8	82.5	1.15	13.77	S, CN, 6, 13
	3600	143TC	191488.00	✓	1,212	C143T34WK12	49	208-230/460	3.8	84.0	1.15	13.62	S, CN, 13
	1800	56HC	191217.00	✓	963	C6T17FK82	48	208-230/460	4.8	84.0	1.15	13.77	S, CN, 6, 13
	1800	145TC	191489.00	✓	1,201	C145T17WK35	49	208-230/460	4.8	86.5	1.15	13.62	S, CN, 13
	2	3600	56HC	191221.00	✓	1,075	C6T34FK87	49	208-230/460	5.0	84.0	1.15	13.77
	3600	145TC	191490.00	✓	1,451	C145T34WK26	50	208-230/460	5.0	85.5	1.15	13.62	S, CN, 13
	1800	56HC	191223.00	✓	1,100	C6T17FK83	52	208-230/460	5.8	84.0	1.15	13.77	S, CN, 6, 13
	1800	145TC	191491.00	✓	1,425	C145T17WK37	53	208-230/460	5.8	86.5	1.15	13.62	S, CN, 13
3	3600	145TC	191492.00	✓	1,557	C145T34WK21	62	208-230/460	7.4	86.5	1.15	14.12	S, CN, 13

Green items are Premium Efficient

♥ Note listing on inside back flap

Note 12 - TENV

Specifications are subject to change without notice



View On-line Technical Information





Washguard[®] Motors

SST - All Stainless Motors



Three Phase - TENV/TEFC - C Face Less Base

HP	SYN RPM 60 Hz	NEMA Frame	Catalog Number	Stock	List Price	Model Number	App. Wgt. (lbs)	Voltage	F.L. Amps @ 230 V	% F.L. Eff.	Service Factor	"C" Dim. (Inches)	♥ Notes
1/3	1800	56C	191202.00	√	741	C6T17NC328	30	208-230/460	1.3	78.5	1.15	9.78	S, CN, 12
1/2	1800	56C	191205.00	√	758	C6T17NC329	33	208-230/460	1.6	81.5	1.15	9.78	S, CN, 12
	1200	56C	191419.00	√	827	C6T11NC42	35	208-230/460	2.0	78.5	1.15	9.76	S, CN, 12
3/4	1800	56C	191208.00	√	884	C6T17NC298	38	208-230/460	2.3	82.5	1.15	9.78	S, CN, 12
	1200	56C	191420.00	√	961	C6T11NC43	47	208-230/460	3.0	80.0	1.15	11.30	S, CN, 12
1	1800	56C	191290.00	√	921	C6T17NC310	45	208-230/460	3.0	81.5	1.15	11.00	S, CN, 12
	1800	56C	191213.00	√	921	C6T17FC177	47	208-230/460	3.0	82.5	1.15	13.77	S, CN, 13
	1800	143TC	G191214.00	√	948	143T17WC12	47	208-230/460	3.0	82.5	1.15	13.62	S, CN, 13
	1200	56C	191421.00	√	1,005	C6T11NC44	47	208-230/460	3.8	82.5	1.15	13.10	S, CN, 13
1 1/2	1800	56C	191219.00	√	961	C6T17FC178	48	208-230/460	4.8	84.0	1.15	13.77	S, CN, 13
	1800	145TC	G191220.00	√	989	C145T17WC37	48	208-230/460	4.8	84.0	1.15	13.62	S, CN, 13
2	1800	56C	191225.00	√	1,094	C6T17FC179	52	208-230/460	5.8	84.0	1.15	13.77	S, CN, 13
	1800	145TC	G191226.00	√	1,128	145T17WC38	52	208-230/460	5.8	84.0	1.15	13.62	S, CN, 13
3	3600	145TC	G191542.00	√	1,241	C145T34WC8	60	208-230/460	7.4	85.5	1.15	14.12	S, CN, 13

Note 12 - TENV

♥ Note listing on inside back flap

Specifications are subject to change without notice

View On-line Technical Information



- Explosion Proof Motors
- Automotive Duty Motors
- Pump Motors
- Washguard[®] Motors
- Agricultural Motors
- HVAC / Fan Motors
- Special Voltage Motors
- Definite Purpose Motors
- Brake Motors

Washguard® Motors

Premium - All Stainless Motors Single Phase & Three Phase



General Specifications:

Designed specifically to meet the demanding sanitation requirements of the pharmaceutical, food processing and beverage industries. These motors are also ideal in clean room and severe chemical-processing applications involving frequent washdown with nitric acid and caustic lye. In fact, WASHGUARD All-Stainless Motors include IEEE 841 severe-duty features right out of the box! Motors have been tested to and passed the IEC IP-56 test requirements.

Mechanical Protection Features:

- All exterior components are 300-series stainless steel
- Nothing on the motor's exterior is painted or coated in any way
- All sealing components are Viton® for superior chemical resistance
- Full fact nameplate is laser etched on the motor frame – no separately attached nameplate to trap dirt or contaminants
- Endshields are O-ring sealed to the frame
- Double lip shaft seals on both ends of TEFC motors (shaft end only on TENV motors)
- Removable hydrophobic breathers in opposite shaft endbell and conduit box equalize pressure without allowing moisture to enter
- Exterior fastener use minimized reducing the number of entry points for moisture. There are no holes in the frame for attaching a nameplate. Bearing lock screws are located inside the motor and the conduit box mounted screws have been eliminated
- Double-sealed bearings are pre-lubricated with moisture-resistant high-temperature grease for long life
- Interior coatings applied to rotor and stator protect against corrosion
- New conduit box mounting system provides optimum sealing
- Ease to clean construction is BISSC Certified for bakery applications

Electrical Performance and Protection Features:

- WASHGUARD efficiencies meet EPCAct mandates for non-exempt motors when tested without shaft seals.
- Windings are immersed and cured in polyester insulating varnish for extra moisture-resistance
- LEESON's exclusive IRIS™ Inverter-Rated Insulation System provides extra protection and long life, especially in inverter-driven applications
- Single-phase motors use Solid State Sinpac® switch – no mechanical switch contacts to corrode and fail.
- All Washdown Duty motors have Class F Insulation

Standards and Approvals:

- Single and three phase motors are UL component recognized – file number E57948, guide number PRGY2.
- CSA Energy Efficiency Verification Program, report number EEV 78720-1
- Construction is CSA Certified for safety report number LR33543 and listed under BISSC authorization number 769

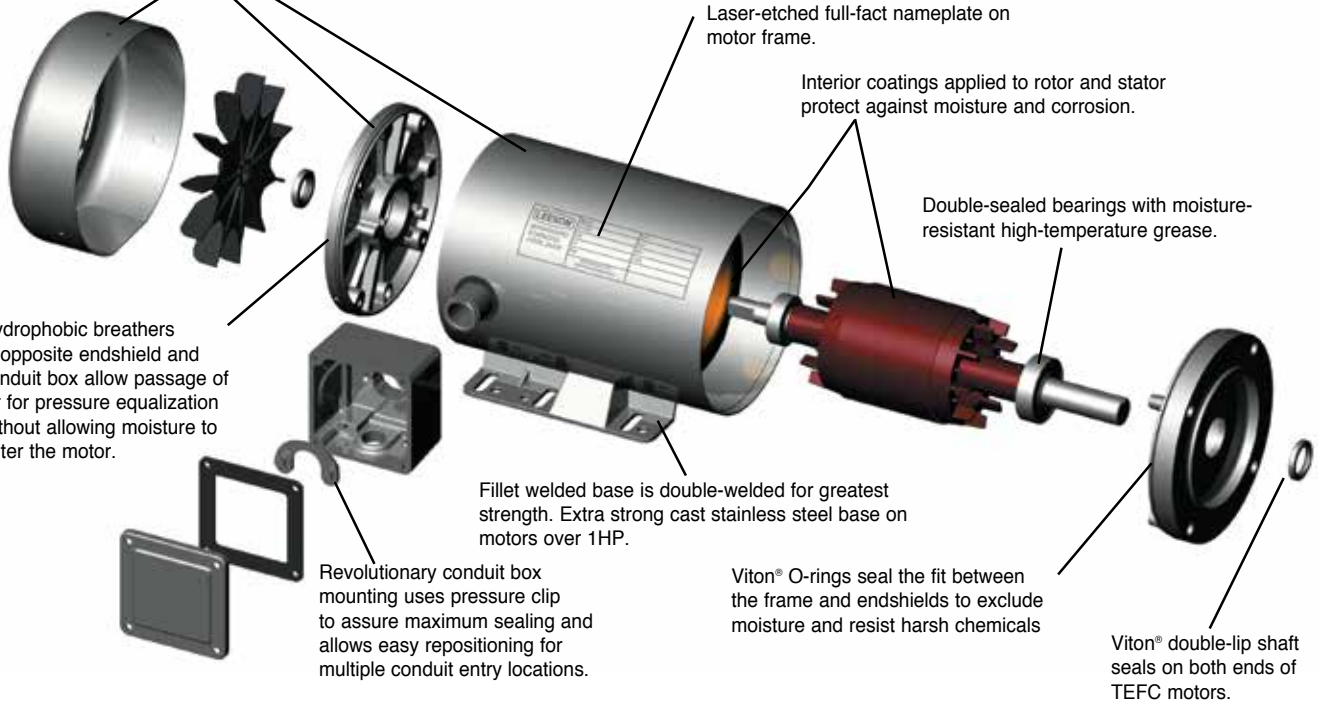
Washguard® Motors
Premium - All Stainless Motors
Single-Phase & Three-Phase

**Premium
 Stainless Duck**



Explosion Proof Motors
Automotive Duty Motors
Pump Motors
Washguard® Motors
Agricultural Motors
HVAC / Fan Motors
Special Voltage Motors
Definite Purpose Motors
Brake Motors

300-Series stainless steel exterior components – frame, base, endshields, shaft extension, fan guard, hardware, conduit box and cover – for maximum corrosion resistance.



Washguard® Motors

Premium - All-Stainless Motors



Three Phase - TENV/TEFC - C Face With Base

HP	SYN RPM 60 Hz	NEMA Frame	Catalog Number	Stock	List Price	Model Number	App. Wgt. (lbs)	Voltage	F. L. Amps @ 230V	% F.L. Eff.	Service Factor	"C" Dim. (Inches)	Notes
1/2	3600	56HC	117269.00	√	1,328	CZ6T34VK19	35	208-230/460	1.6	82.5	1.15	10.47	S, US, 12
	1800	S56C	103387.00	√	1,332	CZ4T17VK2	31	208-230/460	1.8	76.0	1.15	11.49	S, US, 12
	1800	56HC	117266.00	√	1,424	CZ6T17VK46	35	208-230/460	1.6	78.5	1.15	11.22	S, US, 12
	1800	56HC	117762.00	√	1,424	CZ6T17VK52	36	208-230/460	1.8	78.5	1.15	13.13	S, US, 13
	1200	56HC	117275.00	√	1,775	CZ6T11VK5	35	208-230/460	2.3	77.0	1.15	11.47	S, US, 12
3/4	3600	56HC	117271.00	√	1,376	CZ6T34VK20	40	208-230/460	2.4	84.0	1.15	10.97	S, US, 12
	1800	S56C	103388.00	√	1,382	CZ4T17WK1	28	208-230/460	2.4	77.0	1.15	12.50	S, US, 13
	1800	56HC	117267.00	√	1,477	CZ6T17VK47	41	208-230/460	2.3	80.0	1.15	11.72	S, US, 12
	1200	56HC	117276.00	√	1,834	CZ6T11VK6	46	208-230/460	3.0	78.5	1.15	13.22	S, US, 12
1	3600	56HC	117273.00	√	1,505	CZ6T34VK21	43	208-230/460	2.6	85.5	1.15	13.04	S, US, 12
	1800	56HC	115635.00	√	1,511	CZ6T17VK8	44	208-230/460	3.0	81.5	1.15	13.54	S, US, 6, 12
	1800	56HC	117286.00	√	1,554	CZ6T17WK28	39	208-230/460	3.1	82.5	1.15	11.19	S, US, 13
	1800	143TC	121795.00	√	1,511	CZ143T17VK8	44	208-230/460	3.0	81.5	1.15	13.02	S, US, 12
	1800	143TC	121873.00	√	1,787	CZ143T17WK12	50	208-230/460	3.2	85.5	1.15	12.00	S, US, 13
	1200	56HC	117277.00	√	1,879	CZ6T11WK7	48	208-230/460	4.0	77.0	1.15	11.94	S, US, 13
1 1/2	3600	143TC	121874.00	√	1,801	CZ143T34WK7	45	208-230/460	4.0	84.0	1.15	11.75	S, US, 13
	1800	56HC	117284.00	√	1,589	CZ6T17WK26	49	208-230/460	4.4	84.0	1.15	11.94	S, US, 13
	1800	145TC	121875.00	√	1,828	CZ145T17WK32	49	208-230/460	4.8	86.5	1.15	12.75	S, US, 13
	1200	56HC	117278.00	√	1,954	CZ6T11WK8	51	208-230/460	5.4	80.0	1.15	13.19	S, US, 13
2	3600	145TC	121876.00	√	2,138	CZ145T34WK18	49	208-230/460	4.8	85.5	1.25	12.75	S, US, 13
	1800	56HC	117285.00	√	1,879	CZ6T17WK27	50	208-230/460	5.6	84.0	1.15	12.69	S, US, 13
	1800	145TC	121877.00	√	2,161	CZ145T17WK33	50	208-230/460	5.8	86.5	1.25	13.25	S, US, 13
3	3600	145TC	121878.00	√	2,573	CZ145T34WK27	53	208-230/460	8.0	86.5	1.15	13.69	S, US, 13
	3600	182tc	132203.00	√	2,633	CZ182T34WK2	69	208-230/460	7.6	86.5	1.15	14.27	S, MX, 13
	1800	182TC	132206.00	√	2,714	C185T17WK14	85	208-230/460	7.8	89.5	1.15	14.77	S, MX, 13
5	3600	184TC	132207.00	√	3,076	C184T34WK11	90	208-230/460	12.0	88.5	1.25	15.27	S, MX, 13
	1800	184TC	132208.00	√	3,010	C184T17WK16	96	208-230/460	12.6	89.5	1.15	15.77	S, MX, 13
7 1/2	3600	213TC	140825.00	√	4,281	C213T34WK4	160	208-230/460	17.8	89.5	1.15	18.69	S, MX, 13
	1800	213TC	140826.00	√	4,833	C213T17WK10	160	208-230/460	21.6	91.7	1.15	18.69	S, MX, 13
10	3600	215TC	140827.00	√	4,402	C215T34WK11	165	208-230/460	23.6	90.2	1.15	18.69	S, MX, 13
	1800	215TC	140828.00	√	4,978	C215T17WK10	173	208-230/460	26.8	91.7	1.15	18.69	S, MX, 13

Green items are Premium Efficient

Note listing on inside back flap

Note 12 - TENV

Specifications are subject to change without notice

View On-line Technical Information





Three Phase - TENV/TEFC - C Face Less Base

HP	SYN RPM 60 Hz	NEMA Frame	Catalog Number	Stock	List Price	Model Number	App. Wgt. (lbs)	Voltage	F. L. Amps @ 230 V	% F.L. Eff.	Service Factor	"C" Dim. (Inches)	♥Notes
1/3	1800	48C	103393.00	√	1,127	CZ4T17VC7	25	208-230/460	1.3	70.5	1.15	9.83	S, US, 12
1/2	3600	56C	117279.00	√	1,304	CZ6T34VC22	35	208-230/460	1.6	82.5	1.15	10.47	S, US, 12
	1800	48C	103394.00	√	1,151	CZ4T17VC3	27	208-230/460	1.8	76.0	1.15	11.58	S, US, 12
	1800	S56C	103389.00	√	1,316	CZ4T17VC4	30	208-230/460	1.8	76.0	1.15	11.49	S, US, 12
	1800	56C	117270.00	√	1,395	CZ6T17VC56	34	208-230/460	1.6	78.5	1.15	11.22	S, US, 12
3/4	3600	56C	117280.00	√	1,349	CZ6T34VC23	40	208-230/460	2.4	84.0	1.15	10.97	S, US, 12
	1800	S56C	103390.00	√	1,347	CZ4T17WC1	33	208-230/460	2.4	77.0	1.15	12.50	S, US, 13
1	1800	56C	117272.00	√	1,440	CZ6T17VC57	40	208-230/460	2.3	80.0	1.15	11.72	S, US, 12
	3600	56C	117281.00	√	1,478	CZ6T34VC24	43	208-230/460	2.6	85.5	1.15	12.22	S, US, 12
	1800	56C	117274.00	√	1,487	CZ6T17VC58	44	208-230/460	3.0	81.5	1.15	12.72	S, US, 12
	1800	56HC	117287.00	√	1,487	CZ6T17WC30	45	208-230/460	3.1	82.5	1.15	11.19	S, US, 13
	1800	143TC	121796.00	√	1,487	CZ143T17VC9	44	208-230/460	3.0	81.5	1.15	13.02	S, US, 12
1 1/2	1800	143TC	G121659.00	√	1,487	CZ143T17WC13	51	208-230/460	3.1	82.5	1.15	11.25	S, US, 13
	3600	143TC	G121560.00	√	1,488	CZ143T34WC7	52	208-230/460	4.0	82.5	1.15	11.25	S, US, 13
	1800	56C	117282.00	√	1,516	CZ6T17WC28	49	208-230/460	4.4	84.0	1.15	11.94	S, US, 13
	1800	145TC	G121525.00	√	1,516	CZ145T17WC39	55	208-230/460	4.4	84.0	1.15	12.50	S, US, 13
2	3600	145TC	G121561.00	√	1,826	CZ145T34WC20	54	208-230/460	5.2	84.0	1.15	12.50	S, US, 13
	1800	56C	117283.00	√	1,839	CZ6T17WC29	49	208-230/460	5.6	84.0	1.15	12.69	S, US, 13
	1800	145TC	G121527.00	√	1,839	CZ145T17WC40	60	208-230/460	5.6	84.0	1.15	12.75	S, US, 13
3	3600	145TC	G121562.00	√	2,196	CZ145T34WC21	55	208-230/460	7.6	85.5	1.15	12.75	S, US, 13
	1800	182TC	G131923.00	√	2,212	C182T17WC10	88	208-230/460	8.6	87.5	1.15	14.77	S, MX, 13
5	3600	184TC	G131949.00	√	2,507	C184T34WC8	98	208-230/460	12.0	87.5	1.15	14.77	S, MX, 13
	1800	184TC	G131924.00	√	2,524	C184T17WC9	102	208-230/460	13.0	87.5	1.15	15.27	S, MX, 13

Note 12 - TENV

♥ Note listing on inside back flap

Specifications are subject to change without notice

Explosion Proof
Motors

Automotive
Duty Motors

Pump
Motors

Washguard®
Motors

Agricultural
Motors

HVAC / Fan
Motors

Special Voltage
Motors

Definite
Purpose Motors

Brake Motors

View On-line Technical Information



Washguard® Motors

Premium Stainless and Stainless Motors with Shaft Grounding Rings (SGRs)



General Specifications:

Same design features as our standard Premium Stainless and Extreme Duck motors only having a built-in Shaft Grounding Ring that are designed to protect motors that are used in applications that are using AC inverters to control the speed of the motors. They eliminate the stray voltages that may damage the motor's bearings.

Premium Washguard® All-Stainless Motors With Shaft Grounding Rings (SGRs)

Three Phase • Standard, EPAct & NEMA Premium Ratings Three-Phase • TENV/TEFC • C Face With Base

HP	SYN RPM 60 Hz	NEMA Frame	Catalog Number	Stock	List Price	Model Number	App. Wgt. (lbs)	Voltage	F. L. Amps @ 230 V	% F.L. Eff.	Service Factor	"C" Dim. (Inches)	♥Notes
1/2	1800	56HC	117901.00	√	1,516	CZ6T17VK53	35	208-230/460	1.6	78.5	1.15	12.54	S, US, 12
3/4	1800	56HC	117902.00	√	1,567	CZ6T17VK54	41	208-230/460	2.3	80.0	1.15	13.04	S, US, 12
1	1800	56HC	117903.00	√	1,641	CZ6T17WK38	39	208-230/460	3.1	82.5	1.15	13.13	S, US, 12
		143TC	122029.00	√	1,600	CZ143T17VK10	44	208-230/460	3.0	81.5	1.15	13.61	S, US, 12
1 1/2	1800	56HC	117904.00	√	1,675	CZ6T17WK40	49	208-230/460	4.4	84.0	1.15	13.63	S, US, 13
		145TC	122030.00	√	1,906	CZ145T17WK52	49	208-230/460	4.4	86.5	1.15	13.69	S, US, 13
2	1800	56HC	117905.00	√	1,956	CZ6T17WK39	50	208-230/460	5.6	84.0	1.15	13.63	S, US, 13
		145TC	122031.00	√	2,228	CZ145T17WK53	50	208-230/460	5.6	86.5	1.25	13.69	S, US, 13

Green items are Premium Efficient

♥ Note listing on inside back flap

Note 12 - TENV

Specifications are subject to change without notice



View On-line Technical Information





Explosion Proof
Motors

Automotive
Duty Motors

Pump
Motors

Washguard®
Motors

Agricultural
Motors

HVAC / Fan
Motors

Special Voltage
Motors

Definite
Purpose Motors

Brake Motors

Single Phase - TENV/TEFC - C Face With Base

HP	SYN RPM 60 Hz	NEMA Frame	Catalog Number	Stock	List Price	Model Number	App. Wgt. (lbs)	Voltage	F. L. Amps @ 230 V	Service Factor	"C" Dim. (Inches)	♥Notes
1/3	1800	56HC	116343.00	✓	1,490	NZ6C17VK1	35	115/208-230	2.7	1.15	12.20	S, US, 6, 12
1/2	3600	56HC	116344.00	✓	1,474	NZ6C34VK2	38	115/208-230	3.8	1.15	12.20	S, US, 6, 12
	1800	56HC	116345.00	✓	1,511	NZ6C17VK2	38	115/208-230	3.3	1.15	12.70	S, US, 6, 12
3/4	1800	56HC	116346.00	✓	1,597	NZ6K17VK2	42	115/208-230	3.8	1.15	12.70	S, US, 6, 12
1	3600	56HC	116347.00	✓	1,672	NZ6C34VK1	49	115/208-230	6.0	1.15	13.70	S, US, 6, 12
	1800	56HC	116348.00	✓	1,661	NZ6K17VK1	49	115/208-230	4.5	1.15	13.70	S, US, 6, 12
1 1/2	3600	56HC	116482.00	✓	1,752	CZ6K34WK1	49	115/208-230	6.8	1.15	13.81	S, US, 13
	1800	145TC	121622.00	✓	1,726	CZ145K17WK2	53	115/208-230	7.4	1.15	14.81	S, US, 13
2	3600	145TC	121623.00	C/A	1,913	CZ145K34WK1	57	115/208-230	8.8	1.15	14.81	S, US, 13
	1800	145TC	121632.00	C/A	1,991	CZ145K17WK1	57	115/208-230	10.0	1.15	14.81	S, US, 13

Note 12 - TENV

♥ Note listing on inside back flap

Specifications are subject to change without notice

Single Phase - TENV/TEFC - C Face Less Base

HP	SYN RPM 60 Hz	NEMA Frame	Catalog Number	Stock	List Price	Model Number	App. Wgt. (lbs)	Voltage	F. L. Amps @ 230 V	Service Factor	"C" Dim. (Inches)	♥Notes
1/3	1800	56C	116349.00	✓	1,458	NZ6C17VC1	35	115/208-230	2.7	1.15	11.70	S, US, 12
1/2	1800	56C	116350.00	✓	1,486	NZ6C17VC2	38	115/208-230	3.3	1.15	12.70	S, US, 12
3/4	1800	56C	116351.00	✓	1,565	CZ6K17VC2	42	115/208-230	3.8	1.15	12.70	S, US, 12
1	1800	56C	116352.00	✓	1,620	CZ6K17VC1	49	115/208-230	4.5	1.15	13.70	S, US, 12
1 1/2	1800	145TC	121624.00	✓	1,646	CZ145K17WC2	53	115/208-230	7.4	1.15	14.87	S, US, 13
2	1800	145TC	121633.00	C/A	1,893	CZ145K17WC1	57	115/208-230	10.0	1.15	14.87	S, US, 13

Note 12 - TENV

♥ Note listing on inside back flap

Specifications are subject to change without notice

View On-line Technical Information



Washguard® Motors

Stainless Steel Brakemotors & JM Pump Motors



Three Phase - TENV - C Face With Base

HP	SYN RPM 60 Hz	NEMA Frame	Brake Rating (ft-lbs)	Catalog Number	Stock	List Price	Model Number	App. Wgt. (lbs)	Voltage	F. L. Amps @ 230 V	% F.L. Eff.	Service Factor	"C" Dim. (Inches)	Notes
1/2	1800	56C	3	116483.00	✓	5,207	CZ6T17VK31	59	208-230/460	1.6	78.5	1.15	15.85	S, US, 12
1	1800	56C	6	116484.00	✓	5,486	CZ6T17VK32	69	208-230/460	3.0	81.5	1.15	15.85	S, US, 12

Specifications are subject to change without notice

♥ Note listing on inside back flap

Stainless Steel JM Pump Motors



Three Phase - TEFC - JM Pump - C Face With Base

HP	SYN RPM 60 Hz	NEMA Frame	Catalog Number	Stock	List Price	Model Number	App. Wgt. (lbs)	Voltage	F. L. Amps @ 230 V	% F.L. Eff.	Service Factor	"C" Dim. (Inches)	Notes
1	1800	143JM	G121626.00	✓	1,547	CZ143T17WK18	55	208-230/460	3.0	82.5	1.15	16.00	S, US
1 1/2	3600	143JM	G121627.00	✓	1,548	CZ143T34WK11	55	208-230/460	4.0	82.4	1.15	16.00	S, US
	1800	145JM	G121628.00	✓	1,579	CZ145T17WK45	56	208-230/460	4.4	84.0	1.15	16.00	S, US
2	3600	145JM	G121629.00	✓	1,839	CZ145T34WK24	56	208-230/460	5.2	84.0	1.15	16.00	S, US
	1800	145JM	G121630.00	✓	1,859	CZ145T17WK46	57	208-230/460	5.6	84.0	1.15	16.50	S, US
3	3600	145JM	G121631.00	✓	2,211	CZ145T34WK25	57	208-230/460	7.6	85.5	1.15	16.50	S, US
	1800	182JM	G131996.00	✓	2,339	C182T17WK16	85	208-230/460	8.2	87.5	1.15	16.20	S, MX
5	3600	184JM	G131997.00	✓	2,579	C184T34WK14	90	208-230/460	12.0	87.5	1.15	16.20	S, MX
	1800	184JM	G131998.00	✓	2,594	C184T17WK18	96	208-230/460	13.0	87.5	1.15	16.77	S, MX
7 1/2	3600	213JM	G140740.00	✓	3,929	C213T34WK5	160	208-230/460	18.4	88.5	1.15	16.81	S, MX
	1800	213JM	G140741.00	✓	4,014	C213T17WK14	162	208-230/460	20.4	89.5	1.15	19.81	S, MX
10	3600	215JM	G140742.00	✓	4,066	C215T34WK12	165	208-230/460	24.0	89.5	1.15	19.81	S, MX
	1800	215JM	G140743.00	✓	4,140	C215T17WK13	173	208-230/460	26.0	89.5	1.15	19.81	S, MX

Specifications are subject to change without notice

♥ Note listing on inside back flap



View On-line Technical Information

Washguard® Motors

IEC Washguard All-Stainless AC Motors



IEC B5 Flange - Round Body - Three Phase - TENV/TEFC

HP / kW	SYN RPM 60 Hz	IEC Frame	Catalog Number	Stock	List Price	Model Number	App. Wgt. (lbs)	Voltage	F. L. Amps @ 230 V	% F.L. Eff.	Service Factor	"C" Dim. (Inches)	♥Notes
1/3-0.25	1800	71	103403.00	√	1,377	CZ4T17VZ16	30	208-230/460	1.3	70.5	1.15	9.87	S, US, 12
	1800	80	103405.00	√	1,377	CZ4T17VZ17	30	208-230/460	1.3	70.5	1.15	9.87	S, US, 12
1/2-0.37	1800	71	103404.00	√	1,424	CZ4T17VZ6	32	208-230/460	1.6	76.0	1.15	11.62	S, US, 12
	1800	80	103406.00	√	1,424	CZ4T17VZ7	32	208-230/460	1.6	76.0	1.15	11.62	S, US, 12
3/4-0.55	1800	80	103407.00	√	1,509	CZ4T17WZ9	38	208-230/460	2.3	77.0	1.15	12.26	S, US, 13
1- 0.75	1800	90	117516.00	√	1,604	CZ6T17WC44	45	208-230/460	3.1	82.5	1.15	13.13	S, US, 13
1.5 - 1.1	1800	90	117517.00	√	1,692	CZ6T17WC46	49	208-230/460	4.4	84.0	1.15	13.63	S, US, 13
2 - 1.5	1800	90	117518.00	√	1,879	CZ6T17WC45	49	208-230/460	5.6	84.0	1.15	13.63	S, US, 13

Note 12 - TENV

Specifications are subject to change without notice

♥ Note listing on inside back flap

IEC B14 Flange - Round Body - Three Phase - Totally Enclosed

HP / kW	SYN RPM 60 Hz	IEC Frame	Catalog Number	Stock	List Price	Model Number	App. Wgt. (lbs)	Voltage	F. L. Amps @ 230 V	% F.L. Eff.	Service Factor	"C" Dim. (Inches)	♥Notes
1/3-0.25	1800	71	103395.00	√	1,377	CZ4T17VZ13	30	208-230/460	1.3	70.5	1.15	9.83	S, US, 12
	1800	80	103397.00	√	1,377	CZ4T17VZ14	30	208-230/460	1.3	70.5	1.15	9.72	S, US, 12
1/2-0.37	1800	71	103396.00	√	1,424	CZ4T17VZ3	32	208-230/460	1.6	76.0	1.15	11.58	S, US, 12
	1800	80	103398.00	√	1,424	CZ4T17VZ4	32	208-230/460	1.6	76.0	1.15	11.58	S, US, 12
3/4-0.55	1800	80	103399.00	√	1,509	CZ4T17WZ7	38	208-230/460	2.3	77.0	1.15	12.48	S, US, 13

Note 12 - TENV

Specifications are subject to change without notice

♥ Note listing on inside back flap

IEC B3/B5 Flange - Rigid Base - Three Phase - Totally Enclosed

HP / kW	SYN RPM 60 Hz	IEC Frame	Catalog Number	Stock	List Price	Model Number	App. Wgt. (lbs)	Voltage	F. L. Amps @ 230 V	% F.L. Eff.	Service Factor	"C" Dim. (Inches)	♥Notes
1/3-0.25	1800	80	103408.00	√	1,400	CZ4T17VZ18	30	208-230/460	1.3	70.5	1.15	9.50	S, US, 12
1/2-0.37	1800	80	103409.00	√	1,444	CZ4T17VZ8	32	208-230/460	1.6	76.0	1.15	12.75	S, US, 12
3/4-0.55	1800	80	103410.00	√	1,539	CZ4T17WZ10	38	208-230/460	2.3	77.0	1.15	12.26	S, US, 13

Note 12 - TENV

Specifications are subject to change without notice

♥ Note listing on inside back flap

IEC B3/B14 Flange - Rigid Base - Three Phase - Totally Enclosed

HP / kW	SYN RPM 60 Hz	IEC Frame	Catalog Number	Stock	List Price	Model Number	App. Wgt. (lbs)	Voltage	F. L. Amps @ 230 V	% F.L. Eff.	Service Factor	"C" Dim. (Inches)	♥Notes
1/3-0.25	1800	80	103400.00	√	1,424	CZ4T17VZ15	31	208-230/460	1.3	70.5	1.15	9.72	S, US, 12
1/2-0.37	1800	80	103401.00	√	1,573	CZ4T17VZ5	33	208-230/460	1.6	76.0	1.15	11.58	S, US, 12
3/4-0.55	1800	80	103402.00	√	1,629	CZ4T17WZ8	39	208-230/460	2.3	77.0	1.15	12.48	S, US, 13

Note 12 - TENV

Specifications are subject to change without notice

♥ Note listing on inside back flap

View On-line Technical Information



Explosion Proof Motors

Automotive Duty Motors

Pump Motors

Washguard® Motors

Agricultural Motors

HVAC / Fan Motors

Special Voltage Motors

Definite Purpose Motors

Brake Motors

Washguard® Motors

NEMA and IEC Washguard®

All-Stainless DC Motors - SCR Rated



TEFC - SCR Rated 90 & 180V - NEMA - C Face With Base

HP	Full Load RPM	NEMA Frame	Catalog Number	Stock	List Price	Model Number	App. Wgt. (lbs)	Arm. Volts DC	Control Volts AC Input	F. L. Amps DC	"C" Dim. (Inches)	♥Notes
1/4	1750	S56C	109065.00	√	1,344	4D17VK24	38	90	115	3.1	11.81	S, US, 12
1/3	1750	S56C	109066.00	√	1,421	4D17VK25	44	90	115	3.8	12.81	S, US, 12
	1750	S56C	109067.00	√	1,421	4D17VK26	44	180	230	1.9	12.81	S, US, 12
1/2	1750	S56C	109069.00	√	1,660	4D17WK9	46	90	115	5.2	13.87	S, US, 13
	1750	S56C	109070.00	√	1,660	4D17WK10	46	180	230	2.7	13.87	S, US, 13
3/4	1750	S56C	109072.00	√	2,021	4D17WK13	47	90	115	7.5	15.37	S, US, 13
	1750	S56C	109073.00	√	2,021	4D17WK14	48	180	230	3.7	15.37	S, US, 13
1	1750	S56C	109075.00	√	2,345	4D17WK16	51	90	115	9.5	16.37	S, US, 13
	1750	S56C	109076.00	√	2,345	4D17WK17	50	180	230	5.0	16.37	S, US, 13

Base is welded to frame and not removable

Note 12 - TENV

Specifications are subject to change without notice

♥ Note listing on inside back flap



TEFC - SCR Rated 90 & 180V • NEMA - C Face Less Base

HP	Full Load RPM	NEMA Frame	Catalog Number	Stock	List Price	Model Number	App. Wgt. (lbs)	Arm. Volts DC	Control Volts AC Input	F. L. Amps DC	"C" Dim. (Inches)	♥Notes
1/4	1750	S56C	109078.00	√	1,312	4D17VC5	38	90	115	3.1	11.81	S, US, 12
1/3	1750	S56C	109079.00	√	1,389	4D17VC6	44	90	115	3.8	12.81	S, US, 13
	1750	S56C	109080.00	√	1,389	4D17VC7	44	180	230	1.9	12.81	S, US, 13
1/2	1750	S56C	109082.00	√	1,629	4D17WC2	46	90	115	5.2	13.87	S, US, 13
	1750	S56C	109083.00	√	1,629	4D17WC3	46	180	230	2.7	13.87	S, US, 13
3/4	1750	S56C	109085.00	√	1,990	4D17WC5	47	90	115	7.5	15.37	S, US, 13
	1750	S56C	109086.00	√	1,990	4D17WC6	48	180	230	3.7	15.37	S, US, 13
1	1750	S56C	109088.00	√	2,315	4D17WC8	51	90	115	9.5	16.37	S, US, 13
	1750	S56C	109089.00	√	2,315	4D17WC9	50	180	230	5.0	16.37	S, US, 13

Note 12 - TENV

Specifications are subject to change without notice

♥ Note listing on inside back flap



View On-line Technical Information



Washguard® Motors

Metric (IEC) Frame PMDC Motors

All-Stainless DC Motors - SCR Rated

TEFC - SCR Rated 90 & 180V - C Face With Base

HP/kW	Full Load RPM	IEC Frame	Catalog Number	Stock	List Price	Model Number	App. Wgt. (lbs)	Arm. Volts DC	Control Volts AC Input	F. L. Amps DC	"C" Dim. (Inches)	♥Notes
1/3 - 0.25	1750	80D	109068.00	✓	1,421	4D17VK27	44	180	230	1.9	12.81	S, US, 12
1/2 - 0.37	1750	80D	109071.00	✓	1,660	4D17WK11	46	180	230	2.7	13.87	S, US, 13
3/4 - 0.55	1750	80D	109074.00	✓	2,021	4D17WK15	48	180	230	3.7	15.37	S, US, 13
1 - 0.75	1750	80D	109077.00	✓	2,345	4D17WK18	50	180	230	5.0	16.37	S, US, 13

Note 12 - TENV

♥ Note listing on inside back flap

Base is welded to frame and not removable

Specifications are subject to change without notice

TEFC - SCR Rated 90 & 180V - Metric (IEC) - All-Stainless Steel - C Face Less Base

HP/kW	Full Load RPM	IEC Frame	Catalog Number	Stock	List Price	Model Number	App. Wgt. (lbs)	Arm. Volts DC	Control Volts AC Input	F. L. Amps DC	"C" Dim. (Inches)	♥Notes
1/3 - 0.25	1750	80D	109081.00	✓	1,389	4D17VC8	44	180	230	1.9	12.81	S, US, 12
1/2 - 0.37	1750	80D	109084.00	✓	1,629	4D17WC4	46	180	230	2.7	13.87	S, US, 13
3/4 - 0.55	1750	80D	109087.00	✓	1,990	4D17WC7	48	180	230	3.7	15.37	S, US, 13
1 - 0.75	1750	80D	109090.00	✓	2,315	4D17WC10	50	180	230	5.0	16.37	S, US, 13

Note 12 - TENV

Specifications are subject to change without notice

♥ Note listing on inside back flap

Base is welded to frame and not removable

Flange And Face Kits For DC Metric (IEC) Frame Motors

The modular design concept of LEESON's other metric DC motors has been applied to the all-stainless metric motors. Any flange or face kit can mount on any motor. This allows the greatest flexibility from the smallest inventory of motors.

B5 Flange Kits (For Stainless DC Metric Motors)

IEC Frame	Catalog Number	List Price	App. Wgt. (lbs)	BD Flange Dia. (mm)	AK Register (mm)	BF Hole (mm)	AJ Bolt Circle (mm)
71	175593.00	179	2	160	110	9	130
80	175594.00	216	3	200	130	12	165
90S/90L	175594.00	216	3	200	130	12	165
100L/112M	175595.00	337	5	250	180	15	215

Specifications are subject to change without notice

♥ Note listing on inside back flap

B14 Flange Kits (For Stainless DC Metric Motors)

IEC Frame	Catalog Number	List Price	App. Wgt. (lbs)	BD Flange Dia. (mm)	AK Register (mm)	BF Hole (mm)	AJ Bolt Circle (mm)
71	175596.00	136	1	105	70	6	85
80	175597.00	136	1	120	80	6	100
90S/90L	175598.00	371	1	140	95	6	115
100L/112M	175599.00	337	2	160	110	6	130

Specifications are subject to change without notice

♥ Note listing on inside back flap

View On-line Technical Information



Explosion Proof Motors

Automotive Duty Motors

Pump Motors

Washguard® Motors

Agricultural Motors

HVAC / Fan Motors

Special Voltage Motors

Definite Purpose Motors

Brake Motors

Washguard® Motors

Extreme Duck Washguard® All-Stainless Motors Three Phase - Standard, EPAct & NEMA Premium Ratings



General Specifications: These Revolutionary Designed Stainless Steel Motors are built using our "Voice of the customer" design criteria to withstand extreme washdown and sanitation requirements of the food processing, pharmaceutical, packaging and beverage industries. Our Innovative Hydro Sealed System "HS²™" protects from the "outside-in" by reducing entrance points of contaminants and eliminates the need for drain plugs and breathers. This proven process also minimizes exterior hardware, which may trap application elements. Our unique Rotor/Cartridge Seal System, "Q-CAR™" gives quick access to the interior of the motor should the need arise. 300-Series Stainless Steel used on all exterior surfaces gives ideal protection against severe chemical-processing applications and frequent washdown processes using Salt water, Nitric Acids and Solvents.

Mechanical Protection Features:

- All exterior components are 300-Series stainless steel
- Protech Bearing isolator used for the output shaft seal
- Double Lip Viton shaft seal used on non-drive output shaft on TEFC motors
- Minimal exterior fasteners due to no through-bolt design and screw on conduit box covers reduces surface areas that may trap contaminants
- Double-sealed bearings are pre-lubricated with moisture resistant, high temperature grease for long life
- Rotor/Cartridge, "Q-CAR™," design for quick access to motor interior (patent pending).
- O-ring sealed openings on conduit box covers and Rotor/Cartridge cover
- Rigid Cast Base for rugged applications
- Conduit box lead hole location rotatable on TEFC designs
- Full fact nameplate is laser etched to the motor frame making frame surface smooth, which eliminates areas that trap contaminants
- Ease of clean construction is BISSC certified for bakery applications and motors meet Pharmaceutical Duty specifications
- IP 66 Enclosure protection

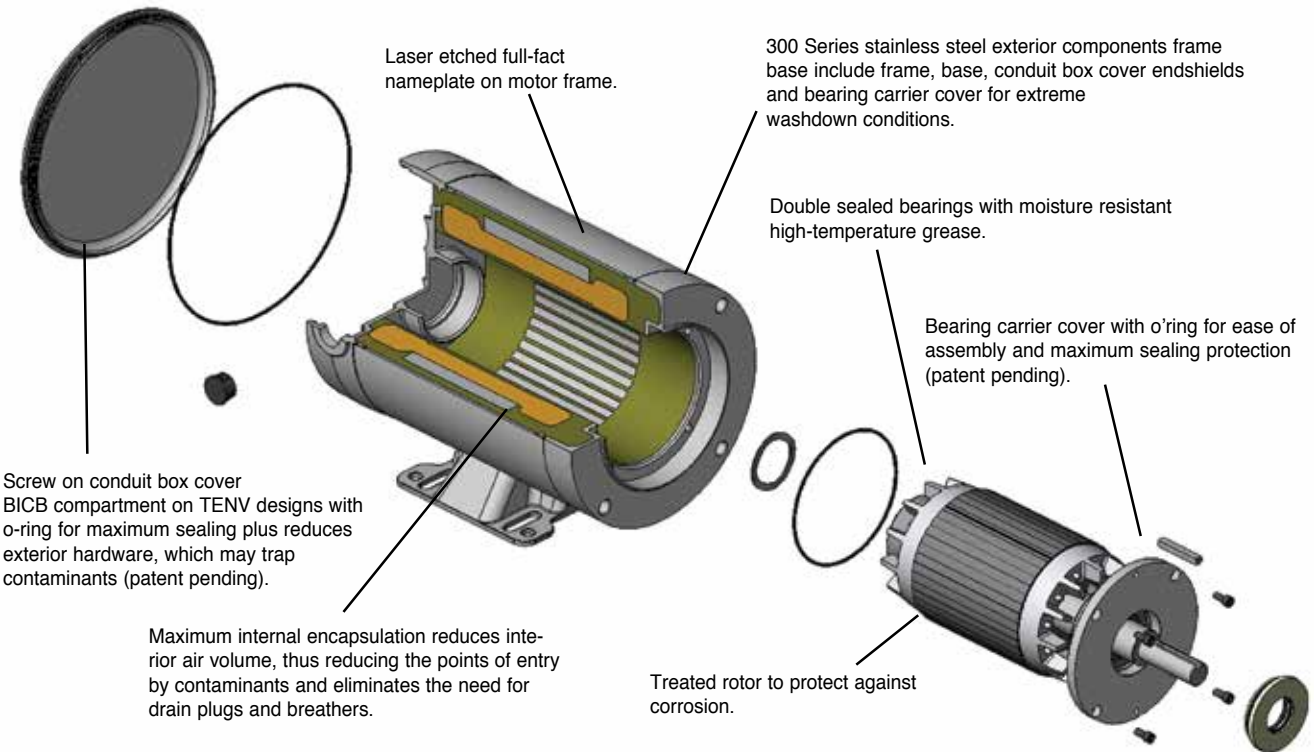
Electrical Performance and Protection Features:

- Motors meet EPAct mandates for non-exempt motors when tested without shaft seals
- Total winding encapsulation using an Epoxy Resin
- LEESON's exclusive IRIS™ Inverter-Rated Insulation System provides extra protection and long life, especially when used in applications driven by an Inverter
- 3 year warranty
- 10:1 constant torque operation

Standards and Approvals

- Motors are UL component recognized – file number E57948, guide number PRGY2
- CSA Energy Efficiency Verification Program, report number EEV 78720-1
- Construction is CSA Certified for safety, report number LR33543 and listed under BISSC authorization number 769

ExtremeDuck

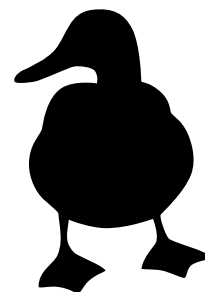


Coming Soon

The all new Extreme. It's not your average duck.

- **Extreme** Sealing
- **Extreme** Durability
- **Extreme** Confidence

The new Extreme Duck.



Explosion Proof Motors

Automotive Duty Motors

Pump Motors

Washguard® Motors

Agricultural Motors

HVAC / Fan Motors

Special Voltage Motors

Definite Purpose Motors

Brake Motors

Washguard® Motors

Extreme Duck Washguard® All-Stainless Motors Three Phase - Standard, EPAct & NEMA Premium Ratings



Three Phase - Totally Enclosed - C Face With Base

HP	SYN RPM 60 Hz	NEMA Frame	Catalog Number	Stock	List Price	Model Number	App. Wgt. (lbs)	Voltage	F. L. Amps @ 230 V	% F.L. Eff.	Service Factor	"C" Dim. (Inches)	♥Notes
1/2	3600	56C	117118.00	✓	1,488	CZ6T34VK16	39	208-230/460	1.6	82.5	1.15	10.47	S, US, 12
	1800	S56C	103411.00	✓	1,471	CZ4T17VK1	33	208-230/460	1.6	76.0	1.15	11.49	S, US, 12
	1800	56C	117119.00	✓	1,565	CZ6T17VK43	40	208-230/460	1.6	78.5	1.15	10.72	S, US, 12
3/4	3600	56C	117120.00	✓	1,539	CZ6T34VK17	46	208-230/460	2.4	84.0	1.15	10.47	S, US, 12
	1800	S56C	103412.00	✓	1,565	CZ4T17WK2	39	208-230/460	2.3	77.0	1.15	12.50	S, US, 13
	1800	56C	117121.00	✓	1,625	CZ6T17VK44	47	208-230/460	2.3	80.0	1.15	11.22	S, US, 12
1	3600	56C	117122.00	✓	1,653	CZ6T34VK18	48	208-230/460	2.6	85.5	1.15	10.97	S, US, 12
	1800	56C	117123.00	✓	1,663	CZ6T17VK45	50	208-230/460	3.0	81.5	1.15	11.97	S, US, 12
1 1/2	3600	143TC	121879.00	✓	1,876	CZ143T34WK8	54	208-230/460	4.0	84.0	1.15	11.75	S, US, 13
	3600	143TC	G121748.00	✓	1,755	CZ143T34WK4	54	208-230/460	4.0	82.5	1.15	11.00	S, US, 13
	1800	56C	117296.00	✓	1,748	CZ6T17WK30	56	208-230/460	4.4	84.0	1.15	11.69	S, US, 13
	1800	145TC	121880.00	✓	1,870	CZ143T17WK13	56	208-230/460	4.4	86.5	1.15	12.75	S, US, 13
	1800	145TC	G121749.00	✓	1,748	CZ143T17WK8	56	208-230/460	4.4	84.0	1.15	11.25	S, US, 13
2	3600	145TC	121881.00	✓	2,168	CZ145T34WK19	56	208-230/460	5.2	85.5	1.15	12.75	S, US, 13
	3600	145TC	G121739.00	✓	2,026	CZ145T34WK10	56	208-230/460	5.2	84.0	1.15	12.50	S, US, 13
	1800	56C	117299.00	✓	2,049	CZ6T17WK29	57	208-230/460	5.6	84.0	1.15	12.69	S, US, 13
	1800	145TC	121882.00	✓	2,192	CZ145T17WK34	57	208-230/460	5.6	86.5	1.15	13.25	S, US, 13
	1800	145TC	G121740.00	✓	2,049	CZ145T17WK25	57	208-230/460	5.6	84.0	1.15	12.50	S, US, 13

Green items are Premium Efficient

♥ Note listing on inside back flap

Note 12 - TENV

Specifications are subject to change without notice

Extreme Duck Washguard® All-Stainless Motors

Three Phase - Totally Enclosed - C Face Less Base

HP	SYN RPM 60 Hz	NEMA Frame	Catalog Number	Stock	List Price	Model Number	App. Wgt. (lbs)	Voltage	F. L. Amps @ 230 V	% F.L. Eff.	Service Factor	"C" Dim. (Inches)	♥Notes
1/3	1800	48C	103417.00	✓	1,493	CZ4T17VC8	30	208-230/460	1.3	70.5	1.15	9.58	S, US, 12
1/2	3600	56C	117126.00	✓	1,458	CZ6T34VC19	38	208-230/460	1.6	82.5	1.15	10.47	S, US, 12
	1800	48C	103418.00	✓	1,554	CZ4T17VC2	32	208-230/460	1.6	76.0	1.15	11.33	S, US, 12
1800	S56C	103413.00	✓	1,382	CZ4T17VC1	32	208-230/460	1.6	76.0	1.15	11.49	S, US, 12	
	56C	117127.00	✓	1,536	CZ6T17VC53	39	208-230/460	1.6	78.5	1.15	10.72	S, US, 12	
	3600	56C	117128.00	✓	1,509	CZ6T34VC20	45	208-230/460	2.4	84.0	1.15	10.47	S, US, 12
1800	S56C	103414.00	✓	1,465	CZ4T17WC2	38	208-230/460	2.3	77.0	1.15	12.50	S, US, 13	
	56C	117129.00	✓	1,597	CZ6T17VC54	46	208-230/460	2.3	80.0	1.15	11.22	S, US, 12	
	3600	56C	117130.00	✓	1,623	CZ6T34VC21	47	208-230/460	2.6	85.5	1.15	10.97	S, US, 12
1800	56C	117131.00	✓	1,635	CZ6T17VC55	50	208-230/460	3.0	81.5	1.15	11.69	S, US, 12	
1 1/2	3600	143TC	121908.00	✓	1,845	CZ143T34WC6	53	208-230/460	4.0	84.0	1.15	11.75	S, US, 13
	3600	143TC	121750.00	✓	1,726	CZ143T34WC2	53	208-230/460	4.0	82.5	1.15	11.00	S, US, 13
	1800	56C	117297.00	✓	1,720	CZ6T17WC32	55	208-230/460	4.4	84.0	1.15	11.69	S, US, 13
	1800	145TC	121909.00	✓	1,840	CZ143T17WC11	55	208-230/460	4.4	86.5	1.15	12.75	S, US, 13
	1800	145TC	121751.00	✓	1,720	CZ143T17WC5	55	208-230/460	4.4	84.0	1.15	11.25	S, US, 13
2	3600	145TC	121910.00	✓	2,138	CZ145T34WC18	55	208-230/460	5.2	85.5	1.15	12.75	S, US, 13
	3600	145TC	121742.00	✓	1,999	CZ145T34WC10	55	208-230/460	5.2	84.0	1.15	12.50	S, US, 13
	1800	145TC	121743.00	✓	2,021	CZ145T17WC22	56	208-230/460	5.6	84.0	1.15	12.50	S, US, 13
	1800	145TC	121911.00	✓	2,162	CZ145T17WC36	56	208-230/460	5.6	86.5	1.15	13.25	S, US, 13
	1800	56C	117298.00	✓	2,021	CZ6T17WC33	56	208-230/460	5.6	84.0	1.15	12.69	S, US, 13

Green items are Premium Efficient

♥ Note listing on inside back flap

Note 12 - TENV

Specifications are subject to change without notice



View On-line Technical Information





Washguard® Motors

Extreme Duck Motors with Shaft Grounding Rings (SGRs) SGRs help prevent bearing damage when running motors with AC Controls



Three Phase - Totally Enclosed - C Face With Base

HP	SYN RPM 60 Hz	NEMA Frame	Catalog Number	Stock	List Price	Model Number	App. Wgt. (lbs)	Voltage	F. L. Amps @ 230 V	% F.L. Eff.	Service Factor	"C" Dim. (Inches)	♥Notes
1/2	1800	56C	117906.00	√	1,652	CZ6T17VK55	40	208-230/460	1.6	78.5	1.15	10.72	S, US, 12
3/4	1800	56C	117907.00	√	1,710	CZ6T17VK56	47	208-230/460	2.3	80.0	1.15	11.22	S, US, 12
1	1800	56C	117908.00	√	1,747	CZ6T17VK57	50	208-230/460	3.0	81.5	1.15	11.97	S, US, 12
1 1/2	1800	56C	117909.00	√	1,829	CZ6T17WK41	56	208-230/460	4.4	84.0	1.15	11.69	S, US, 13
	1800	145TC	122032.00	√	1,829	CZ143T17WK20	56	208-230/460	4.4	84.0	1.15	11.25	S, US, 13
2	1800	56C	117910.00	√	2,120	CZ6T17WK42	57	208-230/460	5.6	84.0	1.15	12.69	S, US, 13
	1800	145TC	122033.00	√	2,120	CZ145T17WK54	57	208-230/460	5.6	84.0	1.15	12.50	S, US, 13

Note 12 - TENV

♥ Note listing on inside back flap

Specifications are subject to change without notice

Explosion Proof Motors

Automotive Duty Motors

Pump Motors

Washguard® Motors

Agricultural Motors

HVAC / Fan Motors

Special Voltage Motors

Definite Purpose Motors

Brake Motors

View On-line Technical Information



Explosion Proof
Motors

Automotive
Duty Motors

Pump
Motors

Washguard®
Motors

Agricultural
Duty Motors

HVAC / Fan
Motors

Special Voltage
Motors

Definite
Purpose Motors

Brake Motors



DE-FEATHERING



SCALDING



FEEDING



CUTTING



PROCESSING



SLICING



INSPECTION



DE-BONING

There's a LEESON Washguard® Motor for every location in your facility.

LEESON offers more than 200 off-the-shelf solutions to everyday washdown motor needs. What's more, LEESON offers washdown-rated gear reducers and AC and DC controls to compliment our washdown motor line. And, when you need a specially engineered custom solution to your washdown application, think LEESON. Our flexible manufacturing processes enable custom products to be manufactured in small or large quantities.



Washguard® Motors

Features Comparison



Feature	White Duck	Super Duck	SST Duck	Stainless Duck	Extreme Duck
Sealed Bearings	■	■	■	■	■
Potted Lead Entrance					■
Complete Motor Encapsulation					■
Nameplate Etched in Frame	■	■	■	■	■
Interior Corrosion Protected	■	■	■	■	
Motor Breathe Plugs/Drain Plugs	■	■	■	■	Not Needed for total encapsulation
Internally Locked Shaft-End Bearing	■	■	■	■	■
Shaft Seals on Both Ends of TEFC Motors	■	■	■	■	■
Viton® Seals Between Endbells and Frame				■	■
UL, CSA Listed	■	■	■	■	■
60Hz and 50Hz Data on Nameplate	■	■	■	■	■
CE Mark on Nameplate	■	■	■	■	■
O-Ring Sealed Openings				■	■
Standard Motors Include Inverter-Rated Insulation System and Marked on Nameplate—1HP and Higher	■	■	■	■	■
Local Inventory Support	■	■	■	■	
Rotor Cartridge Change-Out				■ ①	■
BISSC Approved		■			■
3-Year Warranty	■ ②	■ ②	■ ②	■ ②	■
Screw On Conduit Box Cover				■ ①	■
Pump Motor Designs	■			■	
Brakemotor Designs	■			■	
DC Motors Available	■			■	
Metric Designs Available				■	

① 56/143/145T Frame Ratings ② Premium Efficient Motors

Specifications are subject to change without notice

View On-line Technical Information



Explosion Proof Motors

Automotive Duty Motors

Pump Motors

Washguard® Motors

Agricultural Motors

HVAC / Fan Motors

Special Voltage Motors

Definite Purpose Motors

Brake Motors