

# PRODUCT INFORMATION PACKET



Model No: CI4D17VC8A

Catalog No: 109081.00

..1/3HP-.25KW..1750RPM.80D.IP55.180V...S1.40C.1,0SF.METRIC.CI4D17VC8A.....DC WASHGUARD ALL-STAINLESS.....

IEC



Regal and Leeson are trademarks of Regal Beloit Corporation or one of its affiliated companies.

©2018 Regal Beloit Corporation, All Rights Reserved. MC017097E





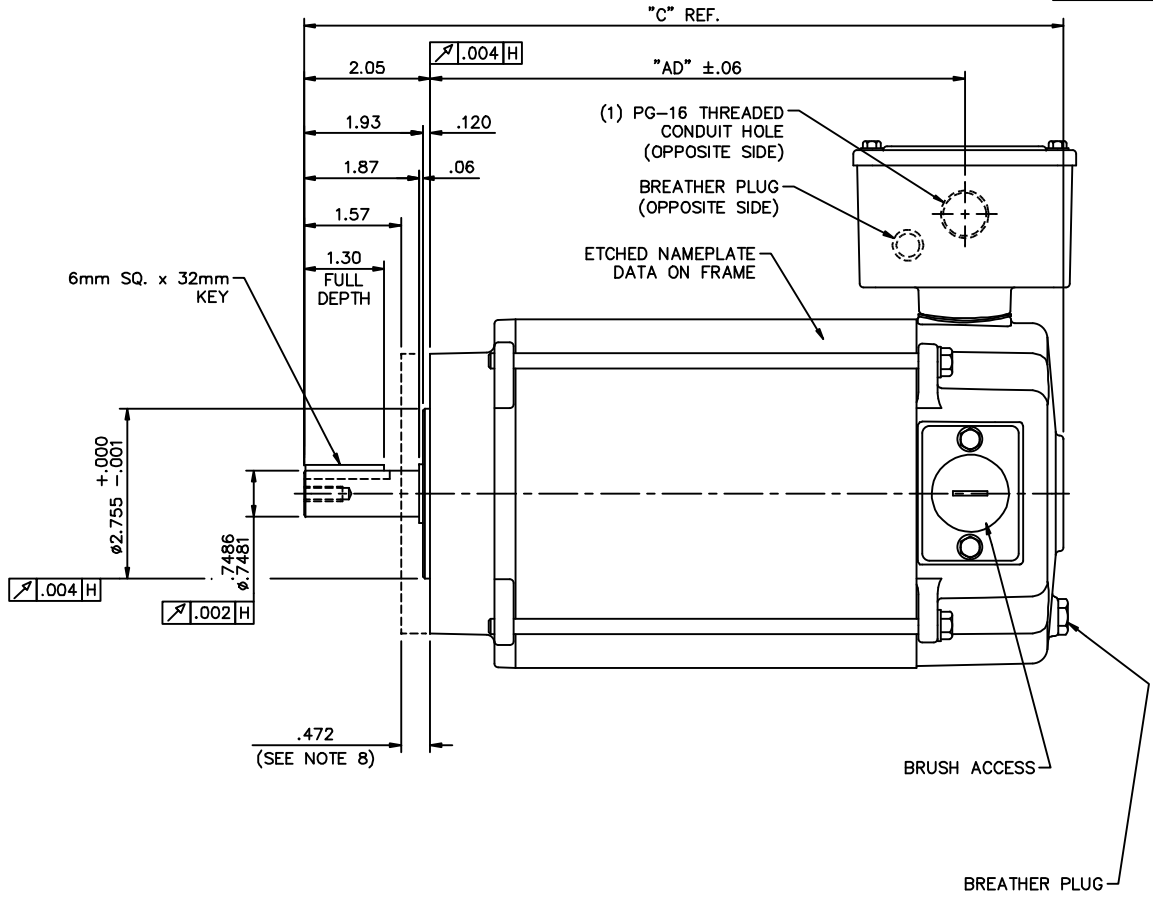
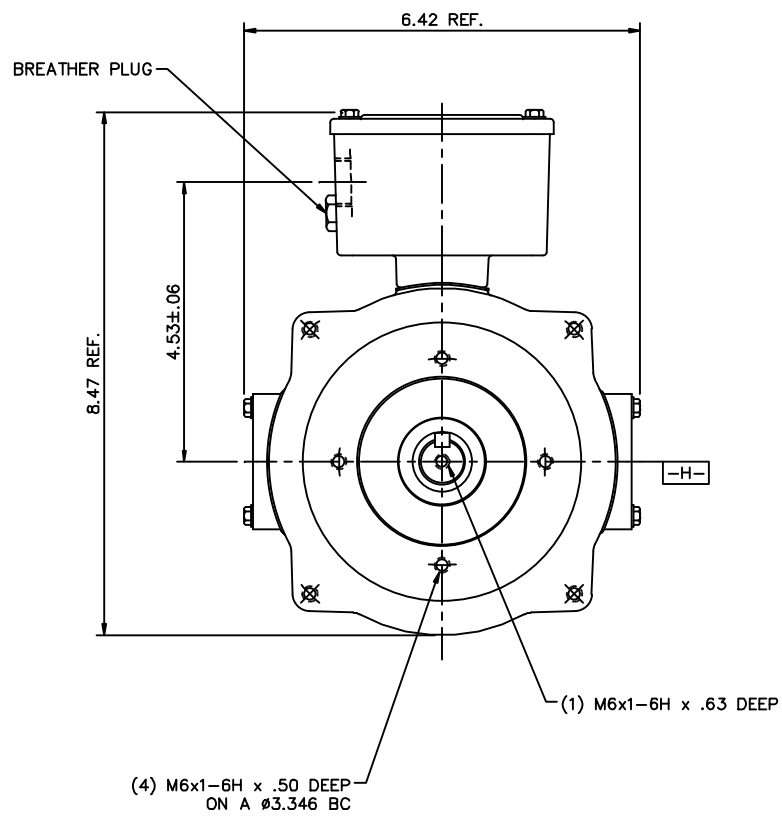
### Nameplate Specifications

Output KW	<b>0.37 kW</b>	Voltage	<b>180 V</b>
Current	<b>2.7 A</b>	Speed	<b>1750 rpm</b>
Service Factor	<b>1</b>	Efficiency	<b>71 %</b>
Duty	<b>S1</b>	Insulation Class	<b>F</b>
Frame	<b>80D</b>	Enclosure	<b>IP55</b>
Overload Protector	<b>No</b>	Ambient Temperature	<b>40 °C</b>
Drive End Bearing Size	<b>6205</b>	Opp Drive End Bearing Size	<b>6203</b>
UL	<b>Recognized</b>	CSA	<b>Y</b>
CE	<b>Y</b>		

### Technical Specifications

Rotation	<b>Reversible</b>	Mounting	<b>Round</b>
Overall Length	<b>12.81 in</b>	Frame Length	<b>7.25 in</b>
Shaft Diameter	<b>0.750 in</b>	Shaft Extension	<b>2.05 in</b>
Outline Drawing	<b>031794-U80</b>	Connection Diagram	<b>005487</b>


This is an uncontrolled document once printed or downloaded and is subject to change without notice. Date Created: 10/15/2018

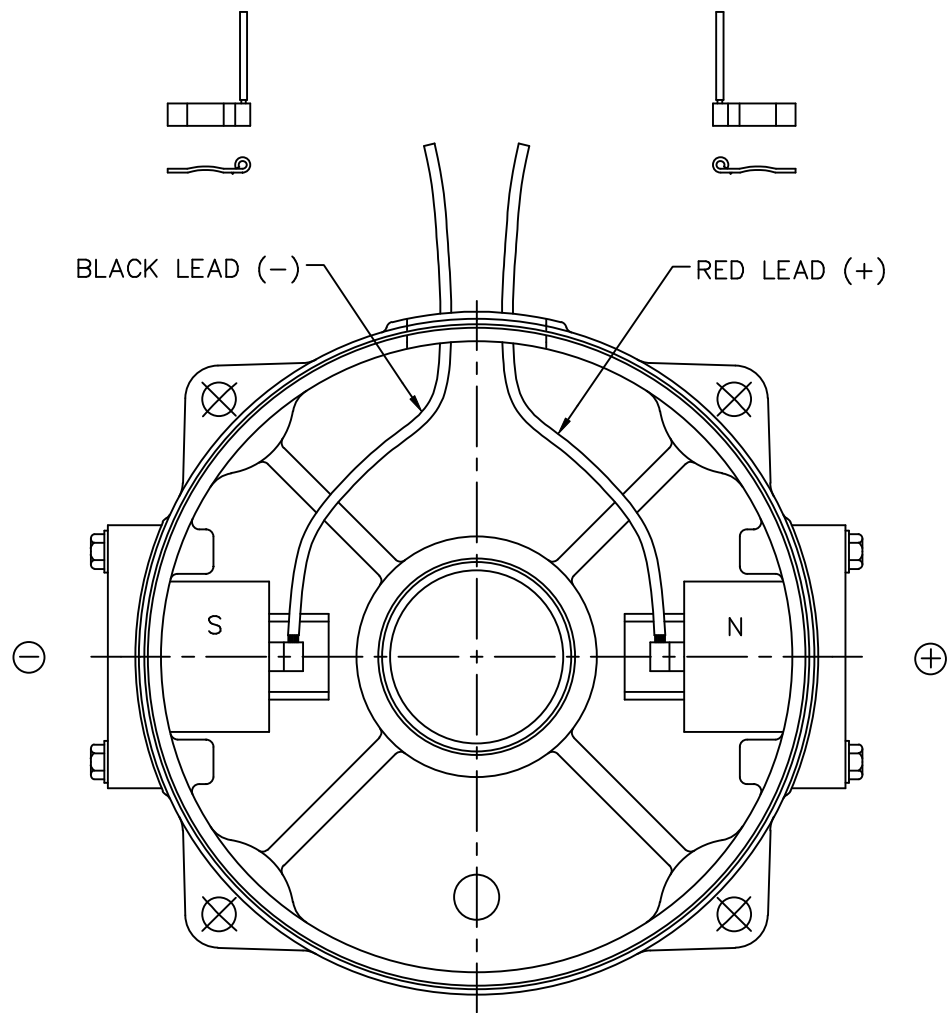


**STAINLESS STEEL WASHGUARD MOTOR**  
SPECIAL FEATURES:


- 1) VITON CONDUIT BOX & COVER GASKETS.
- 2) VITON O-RINGS IN ENDBELL RABBETS.
- 3) VITON O-RINGS IN BRUSH HOLDER & CAP.
- 4) VITON SHAFT SEAL.
- 5) BREATHER PLUGS IN CONDUIT BOX & ENDBELL.
- 6) ETCHED NAMEPLATE DATA ON MOTOR FRAME.
- 7) ALL-STAINLESS STEEL CONSTRUCTION.
- 8) DIMENSION IS SPACE PROVIDED FOR A BOLT-ON B5 OR B14 ADAPTER KIT FOR IEC-80 FRAME.

FRAME	"C"	"AD"
N80	11.81	8.16
R80	12.31	8.66
U80	12.81	9.16

NO.	REVISION	BY & DATE	CHK	ANG	FINISH	TOLERANCES UNLESS SPECIFIED		TITLE	DRAWN PG 1/5/05	
						DEC.	INCHES			
02	CORRECTED LOCATION OF BREATHER PLUG AND PG-16 HOLE TO MATCH ENDBELL ASSEMBLY, ISAAC 12-032B	IPG 1/25/12				.X	±.1	 <b>ELECTRIC MOTORS GEARMOTORS AND DRIVES</b>	CHK	
01	ADDED FRAME DESIGNATION TO TABLE, PER 109081.00	IPG 2/11/05	SAD	.XXXX	±.0005				APPD PG 1/5/05	
									SCALE 1-2	
								REF 031791		
								REF 109081.00		
								PREV		
THIS DRAWING IN DESIGN AND DETAIL IS OUR PROPERTY AND MUST NOT BE USED EXCEPT IN CONNECTION WITH OUR WORK ALL RIGHTS OF DESIGN AND INVENTION ARE RESERVED THIS IS AN ELECTRONICALLY GENERATED DOCUMENT - DO NOT SCALE THIS PRINT						RFP	CAD FILE 031794	SIZE B	DRAWING NO. 031794	REV. 02



EXTERNAL CONNECTIONS FOR CCWLE ROTATION  
 VIEWING LEAD END OF MOTOR WITH RED LEAD  
 POSITIVE AND BLACK LEAD NEGATIVE.  
 FOR CW ROTATION, REVERSE POLARITY.

				TOLERANCES UNLESS SPECIFIED		 ELECTRIC MOTORS GEARMOTORS AND DRIVES	DRAWN PG 12/10/04
				DEC.	INCHES		CHK
				.X	±.1		APPD PG 12/10/04
				.XX	±.01		SCALE 5=8
				.XXX	±.005		REF
				.XXXX	±.0005	MAT'L.	FMF 109075.00
NO.	REVISION	BY & DATE	CHK	ANG	±1/2"	FINISH	PREV
THIS DRAWING IN DESIGN AND DETAIL IS OUR PROPERTY AND MUST NOT BE USED EXCEPT IN CONNECTION WITH OUR WORK ALL RIGHTS OF DESIGN AND INVENTION ARE RESERVED THIS IS AN ELECTRONICALLY GENERATED DOCUMENT - DO NOT SCALE THIS PRINT				RFP	CAD FILE	005487	SIZE DRAWING NO.
				DIST			A 005487.01
							REV.