

PRODUCT INFORMATION PACKET



Model No: M6C34FC11K

Catalog No: 110418.00

..1 1/2HP..3450RPM.56.TEFC.115/208-230V.1PH.60HZ.CONT.40C.1SF.C
FACE.M6C34FC11K.....GENERAL PURPOSE.MANUAL.....

Totally Enclosed Fan Cooled (TEFC)



Regal and Leeson are trademarks of Regal Beloit Corporation or one of its affiliated companies.

©2018 Regal Beloit Corporation, All Rights Reserved. MC017097E



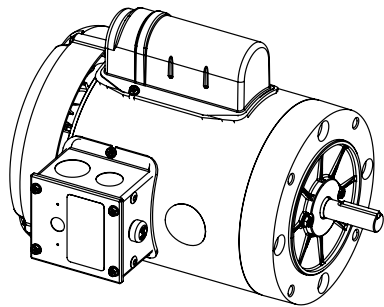
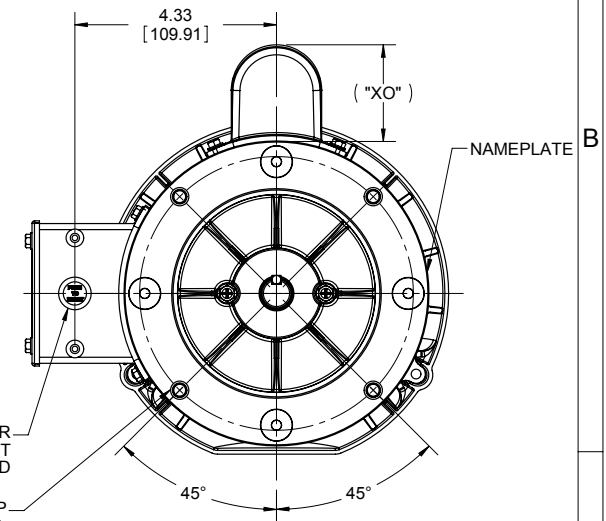
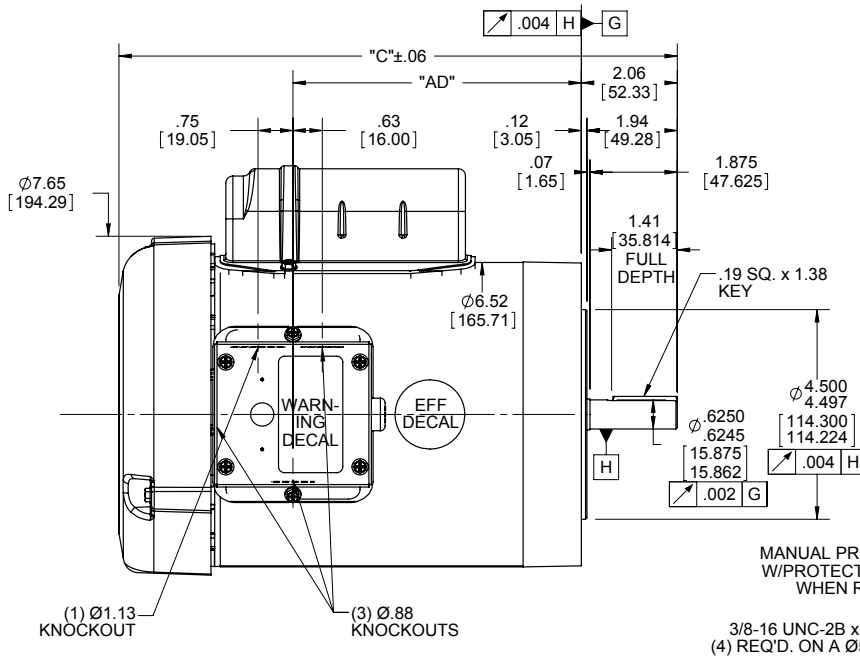
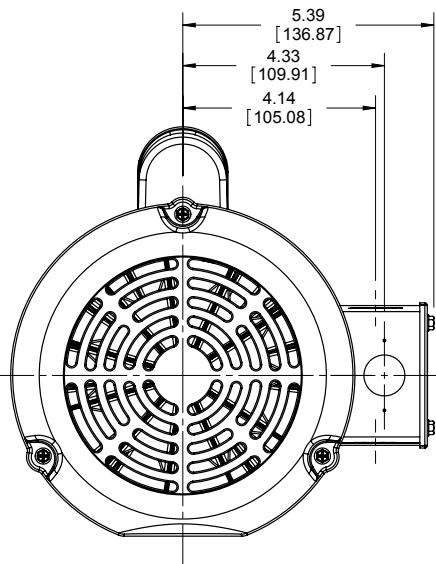


Nameplate Specifications

Output HP	1.50 Hp	Output KW	1.1 kW
Frequency	60 Hz	Voltage	115/208-230 V
Current	17.0/8.5 A	Speed	3450 rpm
Service Factor	1	Phase	1
Efficiency	72 %	Duty	Continuous
Insulation Class	B	Design Code	L
KVA Code	H	Frame	56C
Enclosure	Totally Enclosed Fan Cooled	Overload Protector	Manual
Ambient Temperature	40 °C	Drive End Bearing Size	6203
Opp Drive End Bearing Size	6203	UL	Recognized
CSA	Y	CE	N
IP Code	43		

Technical Specifications

Electrical Type	Capacitor Start Induction Run	Starting Method	Across The Line
Poles	2	Rotation	Selective Counterclockwise
Mounting	Round	Motor Orientation	HORIZONTAL
Drive End Bearing	BALL	Opp Drive End Bearing	BALL
Frame Material	Rolled Steel	Shaft Type	NEMA 56
Overall Length	12.49 in	Frame Length	7.00 in
Shaft Diameter	0.625 in	Shaft Extension	2.06 in
Assembly/Box Mounting	F1 ONLY		
Outline Drawing	028831-700B	Connection Diagram	005003.03



DASH NO.	"C"	"AD"
600	11.49	5.69
650	11.99	6.19
700	12.49	6.69
750	12.99	7.19
800	13.49	7.69
850	13.99	8.19

CAP DASH	"XO"
A	2.32
B	2.08
C	1.61

NOTES:
1) GASKETS THROUGHOUT

DRAWING REVISION D	REVISION BY M. MCCALED	DATE 6/20/14
ECO ECO-0053535	APPROVED BY G. SCHALLOCK	DATE 6/20/14
ECO DESCRIPTION REV ADDED "WHEN REQUIRED" TO PROT. NOTE		
<small>COPYRIGHT REGAL BELOIT AMERICA, INC. ALL RIGHTS RESERVED. PROPRIETARY AND CONFIDENTIAL INFORMATION - THIS DOCUMENT IS THE PROPERTY OF REGAL BELOIT AMERICA, INC. (OWNER) AND CONTAINS OWNER'S PROPRIETARY INFORMATION. ANY PERSON, CORPORATION OR OTHER FIRM RECEIVING IT IS DEEMED, BY RECEIVING IT, TO AGREE THAT IT, AND/OR ANY PART OF IT, SHALL NOT BE DISCLOSED TO ANY PERSON, CORPORATION OR OTHER ENTITY, DUPLICATED, AND/OR USED, EXCEPT AS EXPRESSLY APPROVED IN WRITING IN ADVANCE BY OWNER. THIS DOCUMENT SHALL BE RETURNED TO OWNER UPON REQUEST. IT MAY BE SUBJECT TO CERTAIN RESTRICTIONS UNDER APPLICABLE EXPORT CONTROL LAWS AND REGULATIONS.</small>		

TOLERANCES UNLESS OTHERWISE SPECIFIED:		
DEC.	INCH	mm
.X	±0.1	[±2.5]
.XX	±0.03	[±0.76]
.XXX	±0.005	[±0.127]
.XXXX	±0.0005	[±0.0127]
REMOVE BURRS & BREAK SHARP		
EDGES: .003/.015 [0.076/.381]		
CORNER FILLETS: .02 [51]		
MACHINED SURFACES: 125/3.2		
mm SHOWN IN [BRACKETS]		

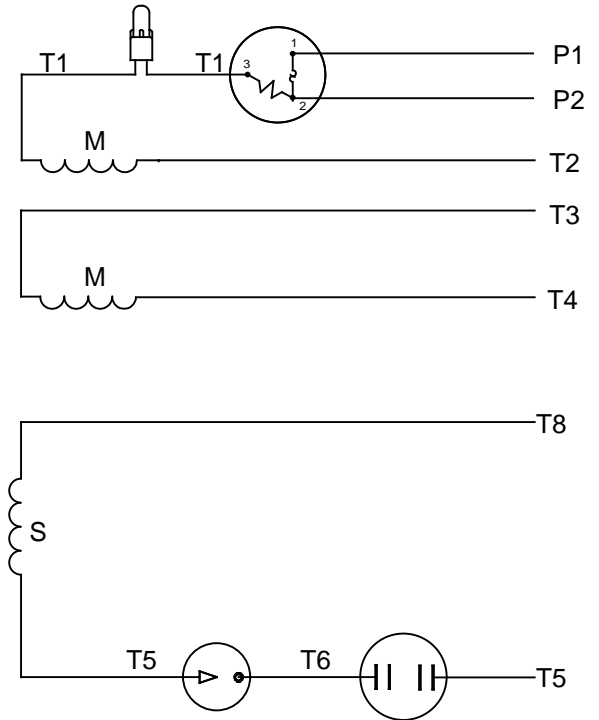
DRAWN BY JJK	DATE 3/31/08
APPROVED BY	DATE
REFERENCE	MATERIAL
THIRD ANGLE PROJECTION	SIZE B

REGAL ™ Regal Beloit America, Inc.	
DESCRIPTION MOTOR ASSY OUTLINE - 56C FRAME - TEFC - "C" FACE	
DRAWING NUMBER 028831	PROCESS/FINISH
SHEET 1 OF 1	

VIEW FROM OUTSIDE OF MOTOR AT SWITCH END



LINE LEADS



RBC PROPRIETARY AND CONFIDENTIAL INFORMATION
 This document is the property of REGAL BELOIT CORPORATION ("RBC") including its subsidiaries and divisions and contains proprietary information of RBC. This document is loaned on the express condition that neither it nor the information contained therein shall be disclosed to others without the express written consent of RBC, and that the information shall be used by the recipient only as approved expressly by RBC. This document shall be returned to RBC upon its request. This document may be subject to certain restrictions under U.S. export control laws and regulations.

	ROTATION FACING LEAD END	L1	L2	JOIN	INSULATE SEPARATELY
HIGH VOLT	C.C.W.	P1	T4 T5	T2,T3 T8	P2
	C.W.	P1	T4 T8	T2,T3 T5	P2
LOW VOLT	C.C.W.	P1	T2,T4 T5	P2,T3 T8	---
	C.W.	P1	T2,T4 T8	P2,T3 T5	---

		TOLERANCES UNLESS SPECIFIED		LEESON	ELECTRIC MOTORS GEARMOTORS AND DRIVES	DRAWN WLV 08/20/79	
NO	REVISION	BY & DATE	CHK ANG			SCALE 1:1	CHK
			.X ±.1			ADN 08/27/76	WRK 08/27/76
			.XX ±.01		TITLE EXTERNAL WIRING DIAGRAM TYPE "C" W/PROTECTOR		
06	REDRAWN IN SOLIDWORKS	VJB 7/22/2011	.XXX ±.005				
05	REDRAWN ON CAD	DBT 05/27/97	.XXXX ±.0005		MAT'L DECAL - 004011		
			±1/2°		FINISH		PAGE OF
THIRD ANGLE PROJECTION				RFP	PREV	SIZE A	DRAWING NO 005003-03
				NETWORK FILE NAME 00500303			REV 06