

# PRODUCT INFORMATION PACKET



Model No: A6T34XB21F

Catalog No: 111937.00

..3/4HP..3450RPM.56.EPFC.208-

230/460V.3PH.60HZ.CONT.40C.1.0SF.RIGID.A6T34XB21F.....EXPLOSION-PROOF.AUTOMATIC.....

Explosion Proof



Regal and Leeson are trademarks of Regal Beloit Corporation or one of its affiliated companies.

©2018 Regal Beloit Corporation, All Rights Reserved. MC017097E





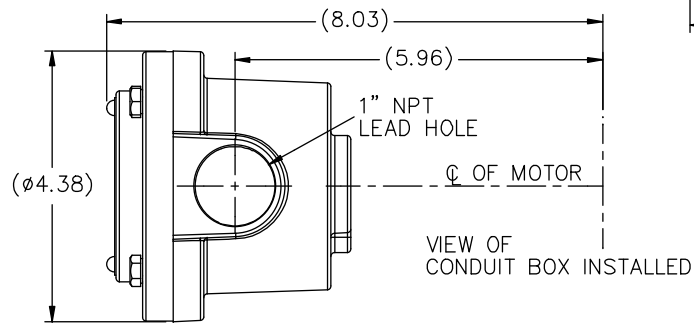
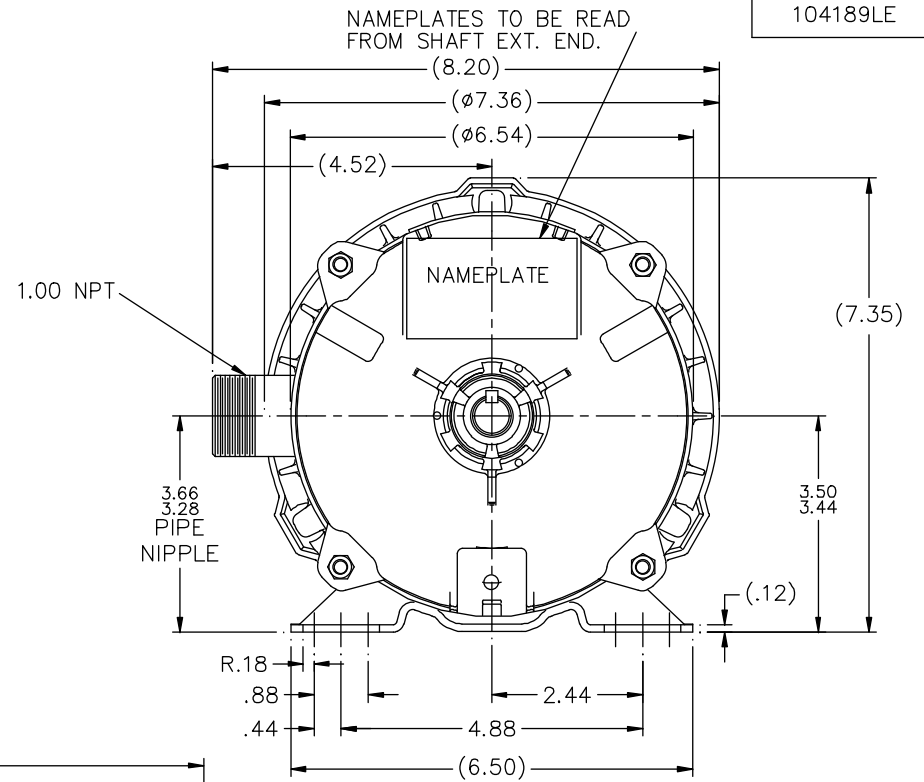
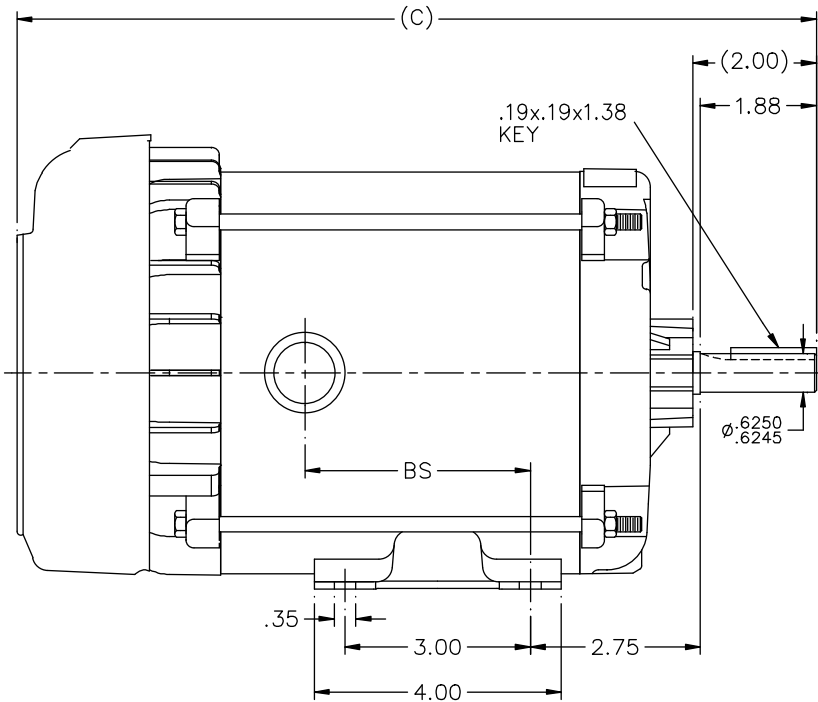
### Nameplate Specifications

Output HP	<b>0.75 Hp</b>	Output KW	<b>0.56 kW</b>
Frequency	<b>60 Hz</b>	Voltage	<b>208-230/460 V</b>
Current	<b>3.0-3.2/1.6 A</b>	Speed	<b>3450 rpm</b>
Service Factor	<b>1</b>	Phase	<b>3</b>
Efficiency	<b>74 %</b>	Duty	<b>Continuous</b>
Insulation Class	<b>B</b>	Design Code	<b>B</b>
KVA Code	<b>N</b>	Frame	<b>56</b>
Enclosure	<b>Explosion Proof Fan cooled</b>	Overload Protector	<b>Automatic</b>
Ambient Temperature	<b>40 °C</b>	Drive End Bearing Size	<b>6203</b>
Opp Drive End Bearing Size	<b>6203</b>	UL	<b>Recognized</b>
CSA	<b>Y</b>	CE	<b>N</b>
IP Code	<b>54</b>		


### Technical Specifications

Electrical Type	<b>Squirrel Cage Induction Run</b>	Starting Method	<b>Across The Line</b>
Poles	<b>2</b>	Rotation	<b>Reversible</b>
Mounting	<b>Rigid base</b>	Motor Orientation	<b>HORIZONTAL</b>
Drive End Bearing	<b>BALL</b>	Opp Drive End Bearing	<b>BALL</b>
Frame Material	<b>Rolled Steel</b>	Shaft Type	<b>NEMA 56</b>
Overall Length	<b>13.44 in</b>	Frame Length	<b>6.31 in</b>
Shaft Diameter	<b>0.625 in</b>	Shaft Extension	<b>1.88 in</b>
Assembly/Box Mounting	<b>F1 ONLY</b>		
Outline Drawing	<b>B-104189LE-631</b>	Connection Diagram	<b>A-EE7335-LE</b>

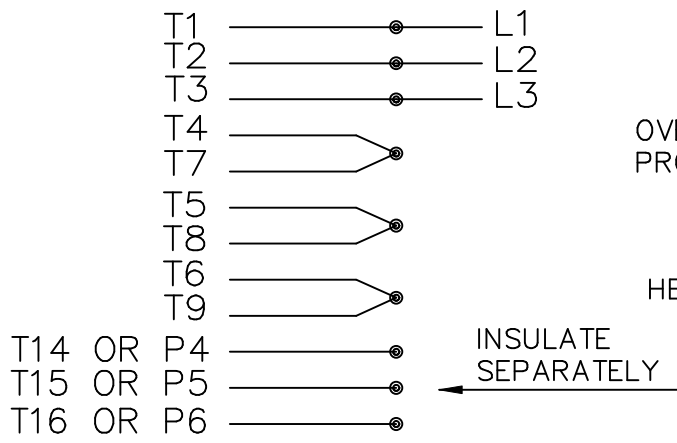
This is an uncontrolled document once printed or downloaded and is subject to change without notice. Date Created: 10/15/2018



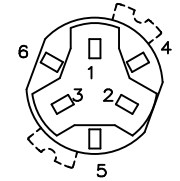
DASH	(C)	BS			
631	13.44	4.15			
681	13.94	4.65			
731	14.44	5.15			
781	14.94	5.65			
831	15.44	6.15			
881	15.94	6.65			
931	16.44	7.15			
981	16.94	7.65			

		TOLERANCES UNLESS SPECIFIED		 ELECTRIC MOTORS GEARMOTORS AND DRIVES		DRAWN RJW 06-22-2007	
		DEC.	INCHES			CHK	ML 06-22-2007
		.X	±.1			APPD	GK 06-22-2007
		.XX	±.03				SCALE 1=2
		.XXX	±.005			REF	
1	COND. BOX INSTALLED VIEW UPDATED PER ECR-0044571	UD	10/15/13	ST	.XXXX ±.0005	MAT'L.	
NO.	REVISION	BY & DATE		CHK	ANG ±7'30"	FINISH	PREV
THIS DRAWING IN DESIGN AND DETAIL IS OUR PROPERTY AND MUST NOT BE USED EXCEPT IN CONNECTION WITH OUR WORK ALL RIGHTS OF DESIGN AND INVENTION ARE RESERVED THIS IS AN ELECTRONICALLY GENERATED DOCUMENT - DO NOT SCALE THIS PRINT				RFP	06-22-2007	CAD FILE 104189LE	SIZE B
						DRAWING NO.	PAGE OF
						104189LE	1

HIGH VOLTAGE CONNECTIONS

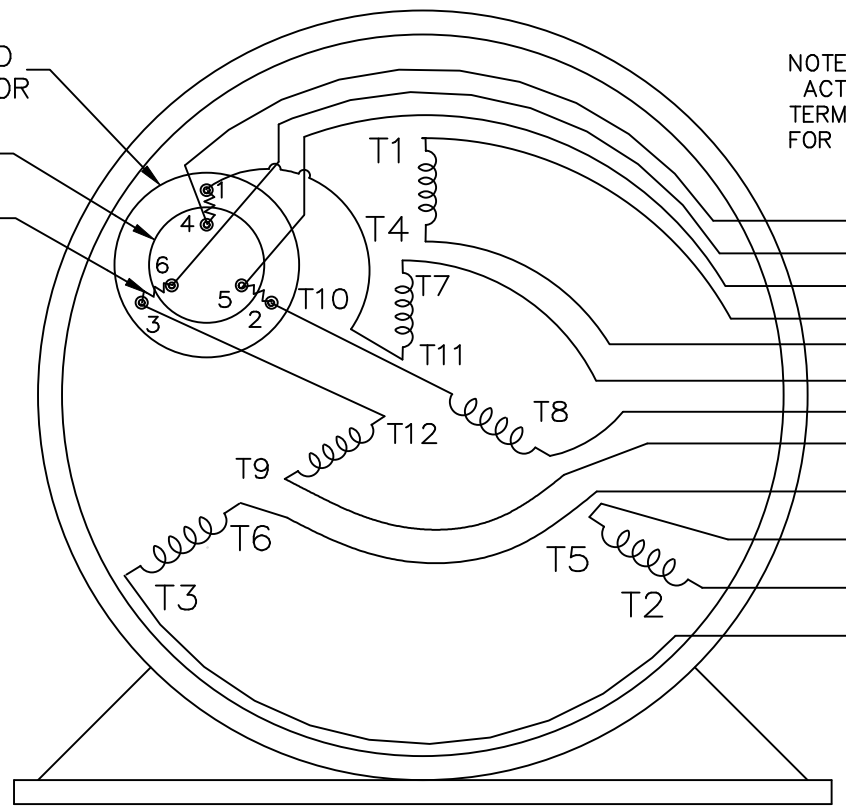


THREE PHASE - DUAL VOLTAGE MOTOR WITH OVERLOAD PROTECTOR



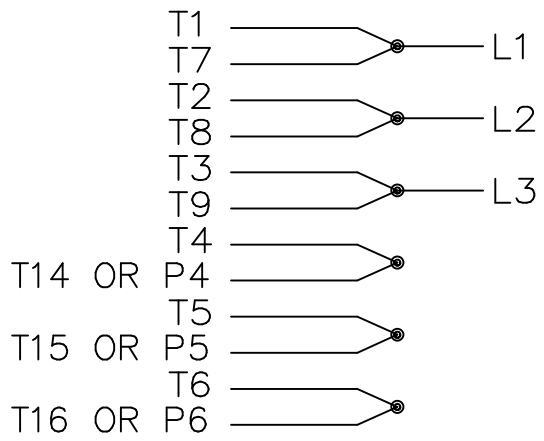
NOTE:  
ACTUAL PROTECTORS  
TERMINAL LOCATIONS  
FOR LEAD CONNECTIONS

OVERLOAD PROTECTOR  
DISC  
HEATER



T14 OR P4  
T16 OR P6  
T15 OR P5

LOW VOLTAGE CONNECTIONS



VIEW OF TERMINAL END

T2K  
T4D  
T6AN

				TOLERANCES UNLESS SPECIFIED		ELECTRIC MOTORS GEARMOTORS AND DRIVES	DRAWN NJS 04-20-2005			
				DEC.	INCHES		CHK ML 04-20-2005			
				.X	± -		APPD MJS 04-20-2005			
				.XX	± -		SCALE			
				.XXX	± -		REF			
				.XXXX	± -	MAT'L.				
NO.	REVISION	BY & DATE	CHK	ANG	± -	FINISH	PREV			
THIS DRAWING IN DESIGN AND DETAIL IS OUR PROPERTY AND MUST NOT BE USED EXCEPT IN CONNECTION WITH OUR WORK ALL RIGHTS OF DESIGN AND INVENTION ARE RESERVED THIS IS AN ELECTRONICALLY GENERATED DOCUMENT - DO NOT SCALE THIS PRINT				RFP	04-20-2005	CAD FILE EE7335_LE	SIZE A	DRAWING NO. EE7335-LE	PAGE OF	REV.
				DIST	WP					



CERTIFICATION DATA SHEET

P.O. BOX 8003  
WAUSAU, WI 54401-8003  
PH. 715-675-3311

DATA VOLTS: 460

CONN. DIAGRAM: EET/335-LE  
OUTLINE: B-104189L E-631  
WINDING: ZT205

RS 3

CAT #:

111937.00

TYPICAL MOTOR PERFORMANCE DATA

HP	KW	SYNC RPM	FL RPM	FRAME	ENCLOSURE	TYPE	KVA CODE	DESIGN
0.75	0.56	3600	3450	56	EPFC	TFR	N	B

PH	HZ	VOLTS	AMPS	START TYPE	DUTY	INSL	S.F.	AMB	ELEV.
3	60/50	208-230/460#190/380	3-3.2/1.683.15/1.6	ACROSS THE LINE	CONT	B	1.15	40	3300

F.L. EFF	F.L. PF	3/4 LD EFF	68.0	1/2 LD EFF	60.0	GTD EFF	70.0	ELECT. TYPE
74.0	69.1	3/4 LD PF	61.5	1/2 LD PF	51.0			SQ CAGE IND RUN

F.L. TORQUE	LR AMPS @ 460 V	L.R. TORQUE	B.D. TORQUE	F.L. RISE (°C)
1.14 LB-FT	11.5	4.0 LB-FT	351%	5.6 LB-FT
				491%
				50

PRESSURE @	POWER	ROTOR WK²	MAX. LOAD WK²	SAFE STALL TIME	STARTS/HOUR	MOTOR WGT
68 DBA	77 DBA	0.02 LB-FT²	1.5 LB-FT²	10 SEC.	2	22 LB.

\*\*\* SUPPLEMENTAL INFORMATION \*\*\*

DE BRACKET TYPE	ODE BRACKET TYPE	MOUNT TYPE	MOTOR ORIENTATION	SEVERE DUTY	HAZARDOUS LOCATION	DRIP COVER	SCREENS	PAINT
STANDARD	STANDARD	RIGID	HORIZONTAL	NO	DEF CL I GR C&D CL II GF	NO	NONE	DEF-LEESON (ENAM)

DE	ODE	GREASE	SHAFT TYPE	SPECIAL DE	SPECIAL ODE	SHAFT	MATERIAL	FRAME MATERIAL
BALL	BALL	POLYREX EM	STANDARD 56	NONE	NONE	1144	STRESSPROOF (C-223)	ROLLED STEEL
6203	6203							

THERMOSTATS	PROTECTORS	WDG RTD's	BRG RTD's	THERMOSTATS	CONTROL	SPACE HEATERS
NONE	AUTOMATIC	NONE	NONE	NONE	FALSE	NA

R1 (ohms/ph)	R2 (ohms/ph)	X1 (ohms/ph)	X2 (ohms/ph)	Xm (ohms/ph)	VIBRATION (in/sec)	FLOAT
0	0	0	0	0	0.150	ODE

INVERTER TORQUE:	INVERTER TORQUE:	INVERTER TORQUE:	INVERTER TORQUE:
NONE	NONE	NONE	NONE
INV. HP SPEED RANGE:	INV. HP SPEED RANGE:	INV. HP SPEED RANGE:	INV. HP SPEED RANGE:
NONE	NONE	NONE	NONE
ENCODER:	ENCODER:	ENCODER:	ENCODER:
NONE	NONE	NONE	NONE
BRAKE:	BRAKE:	BRAKE:	BRAKE:
NONE	NONE	NONE	NONE
FT-LB:	FT-LB:	FT-LB:	FT-LB:
NA	NA	NA	NA
VOLTAGE:	VOLTAGE:	VOLTAGE:	VOLTAGE:
NONE	NONE	NONE	NONE
UL:	UL:	UL:	UL:
Y:(LEESON UL REC)	Y:(LEESON UL REC)	Y:(LEESON UL REC)	Y:(LEESON UL REC)

DATE:	1/31/2018	HZ:



Motor Load Data						LR	
Load	0%	25%	50%	75%	100%	115%	125%
Current (Amps)	1.00	1.00	1.20	1.30	1.60	1.65	1.75
Torque (ft-lb)	0.00	0.28	0.55	0.84	1.14	1.30	1.40
RPM	3600	3577	3560	3525	3450	3440	3425
Efficiency (%)		44.5	60.0	68.0	74.0	74.0	74.0
P.F. (%)	18.0	37.0	51.0	61.5	69.1	74.0	75.5

Motor Speed Data						Information Block			
	LR	Pull-Up	BD	Rated	Idle	HP	Sync. RPM	Frame	Enclosure
Speed (RPM)	0	1800	2640	3450	3600	0.8	3600	56	EPFC
Current (Amps)	11.5	10.4	7.5	1.60	1.00				TFR
Torque (ft-lb)	4.0	3.6	5.6	1.14	0.00				208-230/460#190/380

Construction	208-230/460#190/380	V
Voltage	60	Hz
Frequency	B	
Design	N	
LR Code letter	1.15	
Service Factor	50	°C
Temp Rise @ FL	CONT	
Duty	40	°C
Ambient	1,000	feet
Elevation	0.02	LB-Ft <sup>2</sup>
Rotor/Shaft wk <sup>2</sup>	ZT205	R5
Ref Wdg	68	dB(A)
Sound Pressure @ 1M	NONE	
VFD Rating	B-104189LE-631	
Outline Dwg	A-EE7335-1E	
Conn. Diag		
Additional Specifications:		
0		
EQUIV CKT (OHMS / PHASE)		
R1	R2	X1
0.0000	0.0000	0.0000
X2	Xm	
0.0000	0.0000	

