

# PRODUCT INFORMATION PACKET



Model No: A6T34EC23H  
Catalog No: 111944.00  
..1/3HP..3450RPM.56.EPNV.208-  
230/460V.3PH.60HZ.CONT.40C.1.0SF.ROUND.A6T34EC23H.....EXPLOSION-PROOF.AUTOMATIC.....  
Explosion Proof



Regal and Leeson are trademarks of Regal Beloit Corporation or one of its affiliated companies.  
©2018 Regal Beloit Corporation, All Rights Reserved. MC017097E



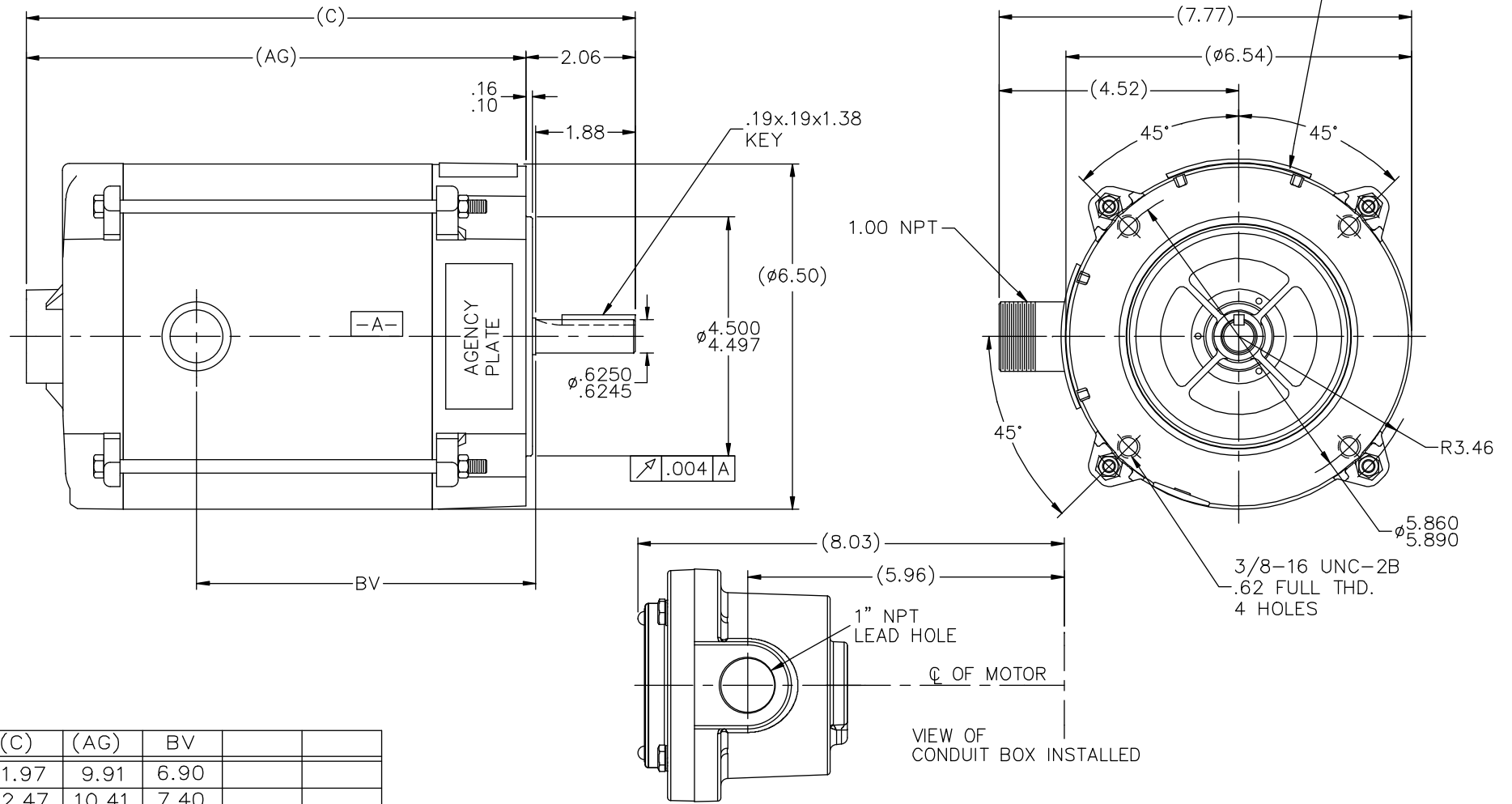


### Nameplate Specifications

Output HP	<b>0.33 Hp</b>	Output KW	<b>0.25 kW</b>
Frequency	<b>60 Hz</b>	Voltage	<b>208-230/460 V</b>
Current	<b>1.1-1.1/0.65 A</b>	Speed	<b>3450 rpm</b>
Service Factor	<b>1</b>	Phase	<b>3</b>
Efficiency	<b>78.5 %</b>	Duty	<b>Continuous</b>
Insulation Class	<b>B</b>	Design Code	<b>B</b>
KVA Code	<b>M</b>	Frame	<b>56C</b>
Enclosure	<b>Explosion Proof Non Ventilated</b>	Overload Protector	<b>Automatic</b>
Ambient Temperature	<b>40 °C</b>	Drive End Bearing Size	<b>6203</b>
Opp Drive End Bearing Size	<b>6203</b>	UL	<b>Recognized</b>
CSA	<b>Y</b>	CE	<b>N</b>
IP Code	<b>54</b>		

### Technical Specifications

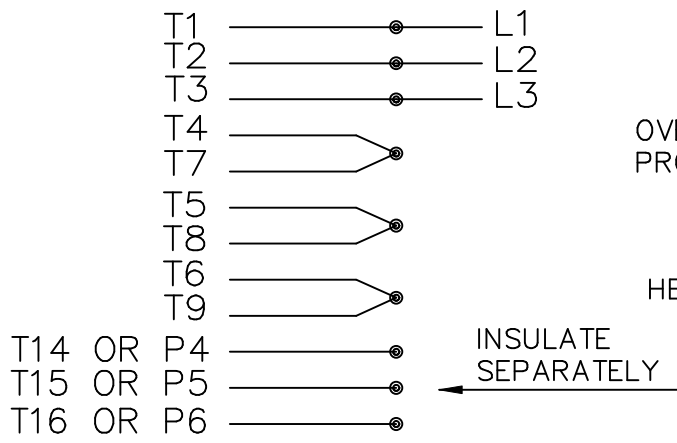
Electrical Type	<b>Squirrel Cage Induction Run</b>	Starting Method	<b>Across The Line</b>
Poles	<b>2</b>	Rotation	<b>Reversible</b>
Mounting	<b>Round</b>	Motor Orientation	<b>HORIZONTAL</b>
Drive End Bearing	<b>BALL</b>	Opp Drive End Bearing	<b>BALL</b>
Frame Material	<b>Rolled Steel</b>	Shaft Type	<b>NEMA 56</b>
Overall Length	<b>11.97 in</b>	Frame Length	<b>6.31 in</b>
Shaft Diameter	<b>0.625 in</b>	Shaft Extension	<b>1.88 in</b>
Assembly/Box Mounting	<b>F1 ONLY</b>		
Outline Drawing	<b>B-104197LE-631</b>	Connection Diagram	<b>A-EE7335-LE</b>



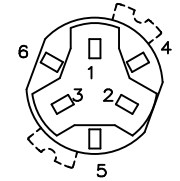
DASH	(C)	(AG)	BV
631	11.97	9.91	6.90
681	12.47	10.41	7.40
731	12.97	10.91	7.90
781	13.47	11.41	8.40
831	13.97	11.91	8.90
881	14.47	12.41	9.40
931	14.97	12.91	9.90
981	15.47	13.41	10.40

				TOLERANCES UNLESS SPECIFIED		LEESON ELECTRIC MOTORS GEARMOTORS AND DRIVES		DRAWN RJW 06-22-2007	
				DEC.	INCHES			CHK	ML 06-22-2007
				.X	±.1	TITLE OUTLINE - 'C' FACE		APPD	GK 06-22-2007
				.XX	±.03	56 FR. - EXP. PR.		SCALE	17=32
02	COND. BOX INSTALLED VIEW UPDATED PER ECR-0044571	UD	10/15/13	ST	.XXX	±.005		REF	
01	UPDATED AS PER ECN #21581	NB	8/26/2011	PN	.XXXX	±.0005	MAT'L.	FMF	
REVISION				BY & DATE	CHK	ANG	±7'30"	FINISH	PREV
THIS DRAWING IN DESIGN AND DETAIL IS OUR PROPERTY AND MUST NOT BE USED EXCEPT IN CONNECTION WITH OUR WORK ALL RIGHTS OF DESIGN AND INVENTION ARE RESERVED THIS IS AN ELECTRONICALLY GENERATED DOCUMENT - DO NOT SCALE THIS PRINT				RFP	06-22-2007	CAD FILE	104197LE	SIZE	DRAWING NO. PAGE OF REV.
				DIST	WP	B	104197LE	02	

HIGH VOLTAGE CONNECTIONS

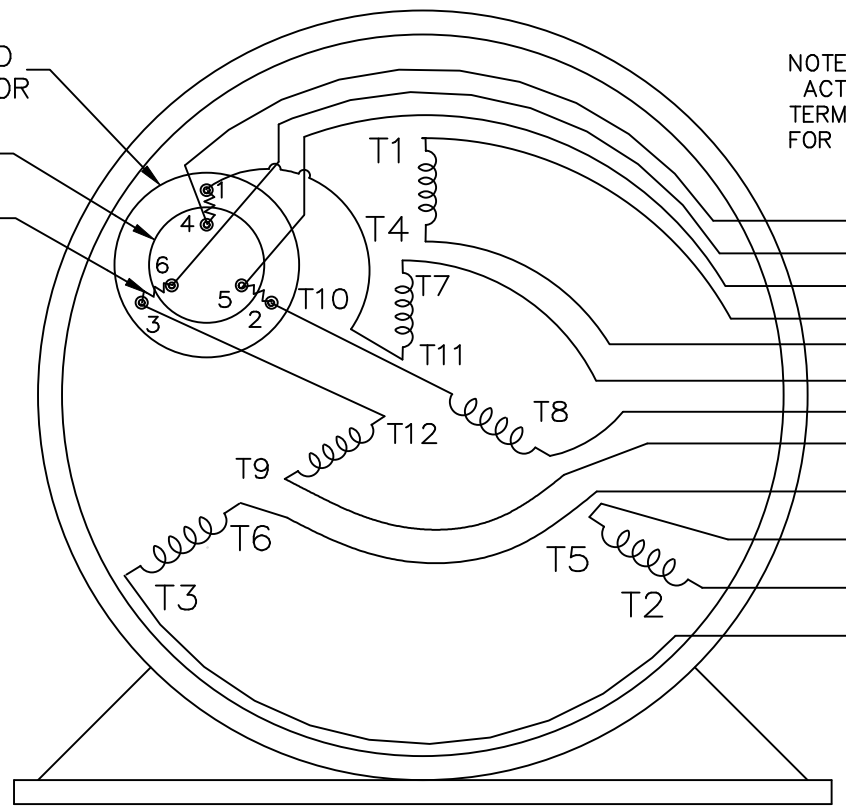


THREE PHASE – DUAL VOLTAGE MOTOR WITH OVERLOAD PROTECTOR



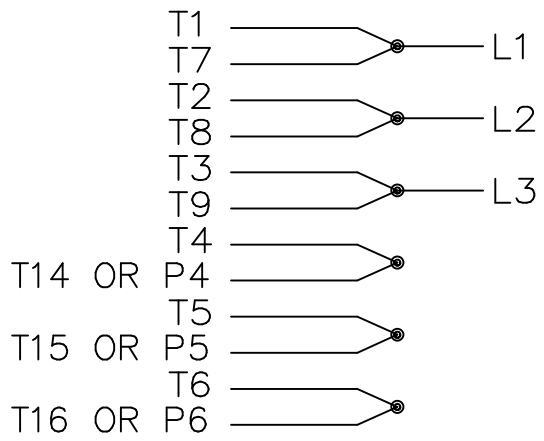
NOTE:  
 ACTUAL PROTECTORS  
 TERMINAL LOCATIONS  
 FOR LEAD CONNECTIONS

OVERLOAD PROTECTOR  
 DISC  
 HEATER



T14 OR P4  
 T16 OR P6  
 T15 OR P5  
 T1  
 T4  
 T7  
 T8  
 T9  
 T6  
 T5  
 T2  
 T3

LOW VOLTAGE CONNECTIONS



VIEW OF TERMINAL END

T2K  
 T4D  
 T6AN

				TOLERANCES UNLESS SPECIFIED		ELECTRIC MOTORS GEARMOTORS AND DRIVES	DRAWN NJS 04-20-2005	
				DEC.	INCHES		CHK ML 04-20-2005	
				.X	± -		APPD MJS 04-20-2005	
				.XX	± -		SCALE	
				.XXX	± -		REF	
				.XXXX	± -	MAT'L.		
NO.	REVISION	BY & DATE	CHK	ANG	± -	FINISH	PREV	
THIS DRAWING IN DESIGN AND DETAIL IS OUR PROPERTY AND MUST NOT BE USED EXCEPT IN CONNECTION WITH OUR WORK ALL RIGHTS OF DESIGN AND INVENTION ARE RESERVED THIS IS AN ELECTRONICALLY GENERATED DOCUMENT - DO NOT SCALE THIS PRINT				RFP	04-20-2005	CAD FILE EE7335_LE	SIZE A	DRAWING NO. EE7335-LE
				DIST	WP		PAGE	OF
								REV.



P.O. BOX 8003  
WAUSAU, WI 54401-8003  
PH. 715-675-3311

DATA VOLTS: 460

CERTIFICATION DATA SHEET

CONN. DIAGRAM: A-EET7335-LE  
OUTLINE: B-104197LE-631  
WINDING: Z12158

CAT #: 111944.00

NONE 3

TYPICAL MOTOR PERFORMANCE DATA

HP	KW	SYNC RPM	FL RPM	FRAME	ENCLOSURE	TYPE	KVA CODE	DESIGN	
0.33	0.25	3600	3530	56C	EPNV	TTR	M	B	
PH	HZ	VOLTS	AMPS	START TYPE	DUTY	INSL	S.F.	AMB	ELEV.
3	60/50	208-230/460#190/380	1.1-1.1/65&1.3/65	ACROSS THE LINE	CONT	B	1.15	40	3300
	F.L. EFF	78.5	3/4 LD EFF	75.8	1/2 LD EFF	69.7	GTD EFF		ELECT. TYPE
	F.L. PF	73.5	3/4 LD PF	66.0	1/2 LD PF	54.5	0.0		SO CAGE IND RUN
F.L. TORQUE	LR AMPS @ 460 V		L.R. TORQUE		B.D. TORQUE		F.L. RISE (°C)		
130 LB-FT	4.6		406 LB-FT	312%	618 LB-FT	475%	35		
PRESSURE @3	POWER	ROTOR WK²	MAX LOAD WK²	SAFE STALL TIME	STARTS/HOUR	MOTOR WGT			
999 DBA	1008 DBA	0.02 LB-FT²	0 LB-FT²	10 SEC.	2	18 LB.			

\*\*\* SUPPLEMENTAL INFORMATION \*\*\*

DE BRACKET TYPE	ODE BRACKET TYPE	MOUNT TYPE	MOTOR ORIENTATION	SEVERE DUTY	HAZARDOUS LOCATION	DRIIP COVER	SCREENS	PAINT
C-FACE	STANDARD	ROUND	HORIZONTAL	NO	DEF CL I GR C&D CL II GR	NO	NONE	JE - LEESON (ENAM)
BEARINGS DE	GREASE	SHAFT TYPE	SPECIAL DE	SPECIAL ODE	SHAFT MATERIAL	FRAME MATERIAL		
BALL 6203	POLYREX EM	STANDARD 56	NONE	NONE	1144 STRESSPROOF (C-223)	ROLLED STEEL		
THERMOSTATS	PROTECTORS	WDG RTD's	BRG RTD's	THERMISTORS	CONTROL	SPACE HEATERS		
NONE	AUTOMATIC	NONE	NONE	NONE	FALSE	NA		
R1 (ohms/ph)	R2 (ohms/ph)	X1 (ohms/ph)	X2 (ohms/ph)	Xm (ohms/ph)	VIBRATION (in/sec)	FLOAT ODE		
0	0	0	0	0	0.150			

* N O T E S *		INVERTER TORQUE: NONE	
		INV. HP SPEED RANGE: NONE	
		ENCODER: NONE	
		NONE	
		NONE	
		BRAKE: NONE	
		NONE	
		FT-LB: NA	
		NONE	
		NONE	
		NONE PPR	

DATE:	1/18/2018	VOLTAGE:	NA	HZ:	
		UL: Y-(LEESON UL REC)			

Data Sheet

Date: 1/18/2018

11194400



Data @ 460 V

		Motor Load Data						
Load	0%	25%	50%	75%	100%	115%	125%	LR
Current (Amps)	0.36	0.39	0.43	0.49	0.60	0.62	0.63	4.6
Torque (ft-lb)	0.00	32.3	64.7	97.1	130	2,385	162	406
RPM	3600	3580	3565	3548	3530	3,524	3515	0
Efficiency (%)		54.2	69.7	75.8	78.5	79.0	79.5	
P.F. (%)	23.5	39.0	54.5	66.0	73.5	76.3	79.0	0.0

Motor Speed Data		Information Block					
	LR	Pull-Up	BD	Rated	Idle		
Speed (RPM)	0	200	2760	3530	3600	HP	0.3
Current (Amps)	4.6	4.1	2.90	0.60	0.36	Sync. RPM	3600
Torque (ft-lb)	406	391	618	130	0.00	Frame	56
						Enclosure	EPNV
						Construction	TTR
						Voltage	208-230/460#190/380 V
						Frequency	60 Hz
						Design	B
						LR Code letter	M
						Service Factor	1.15
						Temp Rise @ FL	35 °C
						Duty	CONT
						Ambient	40 °C
						Elevation	1,000 feet
						Rotor/Shaft wk <sup>2</sup>	0.02 Lb-Ft <sup>2</sup>
						Ref Wdg	Z12158 NONE
						Sound Pressure @ 1M	999 dBA
						VFD Rating	NONE
						Outline Dwg	B-104197LE-631
						Conn. Diag	A-EE7335-1E
						Additional Specifications:	

