

PRODUCT INFORMATION PACKET



Model No: C6C17WK6M

Catalog No: 113300.00

..1 1/2HP.- C-FACE WITH BASE -..1725RPM.56H.TEFC.115/208-
230V.1PH.60HZ.CONT.40C.1.15SF.RIGID.C6C17WK6M.....WASHGUARD.NOT.....

General Purpose



Regal and Leeson are trademarks of Regal Beloit Corporation or one of its affiliated companies.

©2018 Regal Beloit Corporation, All Rights Reserved. MC017097E





Nameplate Specifications

Output HP	1.50 Hp	Output KW	1.1 kW
Frequency	60 Hz	Voltage	115/208-230 V
Current	19.0/9.5 A	Speed	1725 rpm
Service Factor	1.15	Phase	1
Efficiency	71 %	Duty	Continuous
Insulation Class	F	Design Code	NO DESIGN CODE
KVA Code	J	Frame	56HC
Enclosure	Totally Enclosed Fan Cooled	Overload Protector	No
Ambient Temperature	40 °C	Drive End Bearing Size	6205
Opp Drive End Bearing Size	6203	UL	Recognized
CSA	Y	CE	N
IP Code	55		

Technical Specifications

Electrical Type	Capacitor Start Induction Run	Starting Method	Across The Line
Poles	4	Rotation	Selective Counterclockwise
Mounting	Rigid base	Motor Orientation	HORIZONTAL
Drive End Bearing	BALL	Opp Drive End Bearing	BALL
Frame Material	Rolled Steel	Shaft Type	NEMA 56
Overall Length	13.37 in	Frame Length	7.50 in
Shaft Diameter	0.625 in	Shaft Extension	1.88 in
Assembly/Box Mounting	F1 ONLY		
Outline Drawing	607-0350-750B	Connection Diagram	005278.07

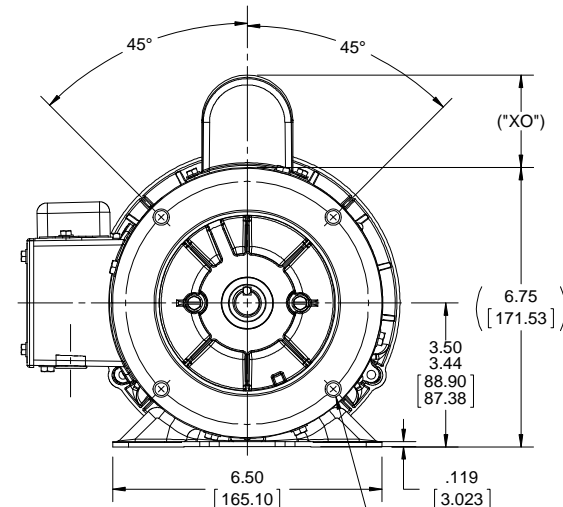
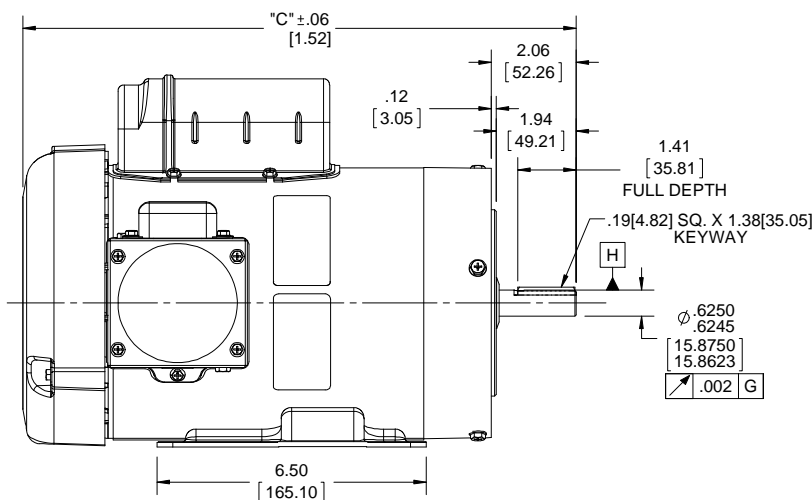
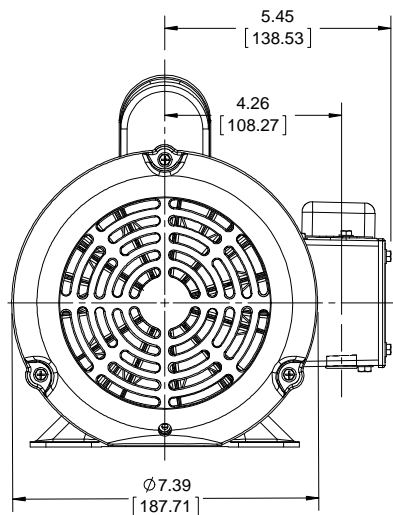
4

3

Uncontrolled Copy

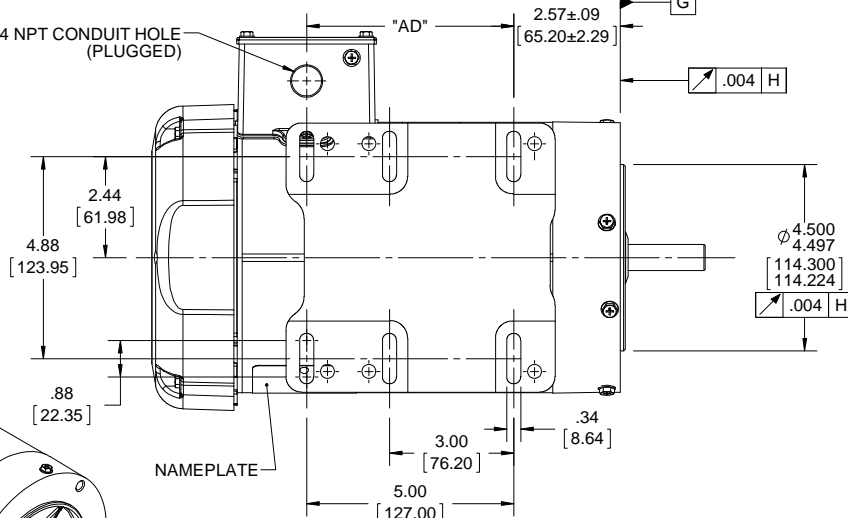
2

1



3/8-16 UNC-2B X .56[14.22] DEEP
(4) REQ'D ON A Ø5.875[149.22]

(1) 1/2-14 NPT CONDUIT HOLE
(PLUGGED)



S.S. SWITCH
WARNING DECAL

CONNECTION DECAL
UNDER COVER
(WHEN REQUIRED)

NAMEPLATE

WASHGUARD MOTOR

SPECIAL FEATURES

1. SHAFT SEALS & V-RING.
2. PLUGGED DRAIN HOLES IN ENDBELLS & CONDUIT BOX.
3. BUNA-N GASKETS THROUGHOUT.
4. STAINLESS STEEL SHAFT, HARDWARE & NAMEPLATE.
5. SOLID STATE SWITCH MOUNTED TO CONDUIT BOX.

WASHGUARD
DECAL

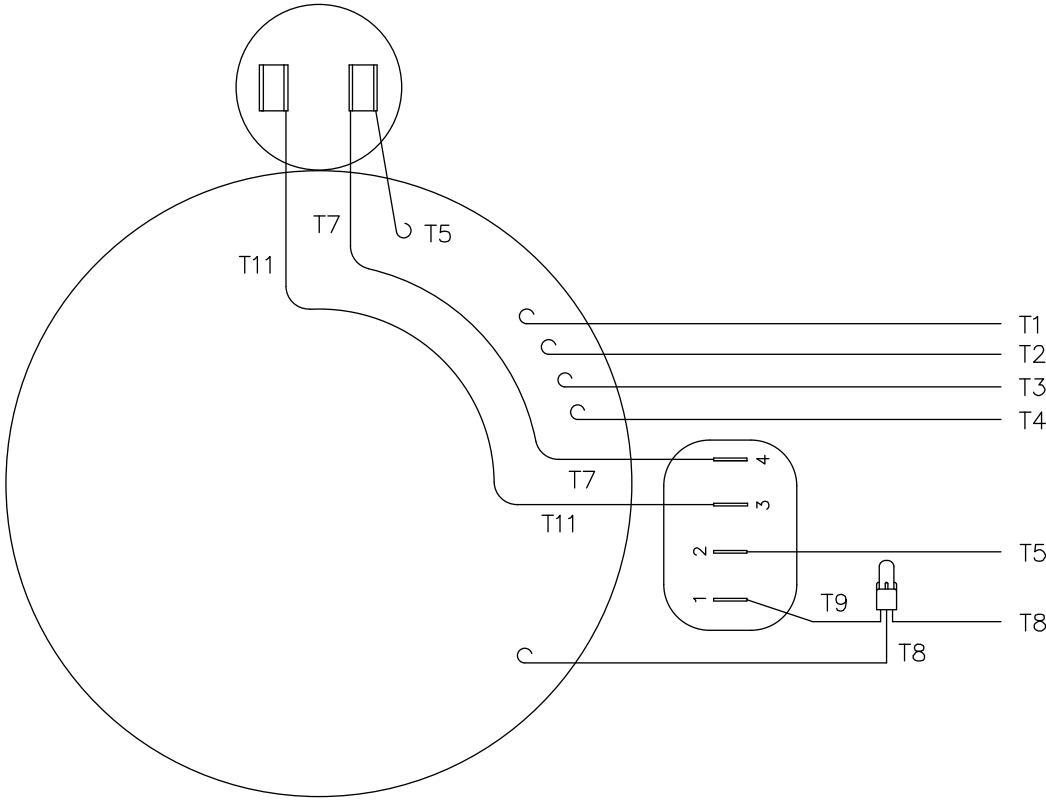
DRAIN HOLE DECAL

DRAWING REVISION	REVISION BY	DATE
ECO-0140840	APPROVED BY	DATE
ECO DESCRIPTION		
OUTLINE CONVERSION PROJECT		
COPYRIGHT REGAL BELOIT AMERICA, INC. ALL RIGHTS RESERVED. PROPRIETARY AND CONFIDENTIAL INFORMATION - THIS DOCUMENT IS THE PROPERTY OF REGAL BELOIT AMERICA, INC. (OWNER) AND CONTAINS OWNER'S PROPRIETARY INFORMATION. ANY PERSON, CORPORATION OR OTHER FIRM RECEIVING IT IS DEEMED, BY RECEIVING IT, TO AGREE THAT IT, AND/OR ANY PART OF IT, SHALL NOT BE DISCLOSED TO ANY PERSON, CORPORATION OR OTHER ENTITY. DUPLICATED, AND/OR USED, EXCEPT AS EXPRESSLY APPROVED IN WRITING IN ADVANCE BY OWNER. THIS DOCUMENT SHALL BE RETURNED TO OWNER UPON REQUEST. IT MAY BE SUBJECT TO CERTAIN RESTRICTIONS UNDER APPLICABLE EXPORT CONTROL LAWS AND REGULATIONS.		

TOLERANCES UNLESS OTHERWISE SPECIFIED:	ANGLE
DEC. INCH mm	±0.5°
.X ±0.1 [-2.5]	
.XX ±0.03 [-0.76]	
.XXX ±0.005 [-0.127]	
.XXXX ±0.0005 [-0.0127]	
REMOVE BURRS & BREAK SHARP EDGES: .003/.015 [.076/.381] X 45° CORNER FILLETS: R.02 [.51]	
MACHINED SURFACES: 125 3.2	
mm SHOWN IN [BRACKETS]	

DRAWN BY	DATE
A. KEETHA	02/08/2018
APPROVED BY	DATE
PK	03/08/2018
REFERENCE	THIRD ANGLE PROJECTION
607-0009	

DASH NO.	"C"	"AD"	"XO"
750B	13.36[339.34]	5.00[127.00]	2.24[56.89]
REGAL™ Regal Beloit America, Inc.			
DESCRIPTION			
OUTLINE 56HC FRAME TEFC-RIGID "C" FACE			
MATERIAL		PROCESS/FINISH	
SIZE B		DRAWING NUMBER	
		607-0350	
		SHEET	
		1 OF 1	



VIEW FROM OUTSIDE OF MOTOR AT SWITCH END.

LINE LEADS

	ROTATION FACING LEAD END	L1	L2	JOIN & INSULATE
HIGH VOLT	C.C.W.	T1	T4 T5	T2,T3 T8
	C.W.	T1	T4 T8	T2,T3 T5
LOW VOLT	C.C.W.	T1,T3 T8	T2,T4 T5	
	C.W.	T1,T3 T5	T2,T4 T8	

TOLERANCES UNLESS OTHERWISE SPECIFIED			
		DECIMALS	
		.00	± .01
		.000	± .005
		.0000	± .0005
		FRACTIONS	± 1/64
		ANGLES	± 1/2°
		INCH/MM	

LEESON ELECTRIC CORPORATION

						DRAWN	RSK 07/21/98	TITLE EXTERNAL WIRING DIAGRAM TYPE "C" W/O PROTECTOR	
						CH'K'D.			
01	ADDED DECAL FOR STOCK MOTORS ECR 0042509	GWS	9/10/13	.0000	± .0005	APPR.		MAT'L. DECAL - 004012	
NO.	REVISION	BY	DATE	FRACTIONS	± 1/64	SCALE	1=1	STOCK MOTORS TO USE DECAL 214-0122-001	
THIS DRAWING IN DESIGN AND DETAIL IS OUR PROPERTY AND MUST NOT BE USED EXCEPT IN CONNECTION WITH OUR WORK ALL RIGHTS OF DESIGN AND INVENTION ARE RESERVED				ANGLES	± 1/2°	REF.	005278-01	FINISH	SIZE
				INCH/MM		FMF	131571	STANDARD	A
									DRAWING NO. 005278-07



LEESON ELECTRIC CORPORATION

TYPICAL PERFORMANCE CURVE for AC MOTOR

Model No 113300.00

Curve at

230

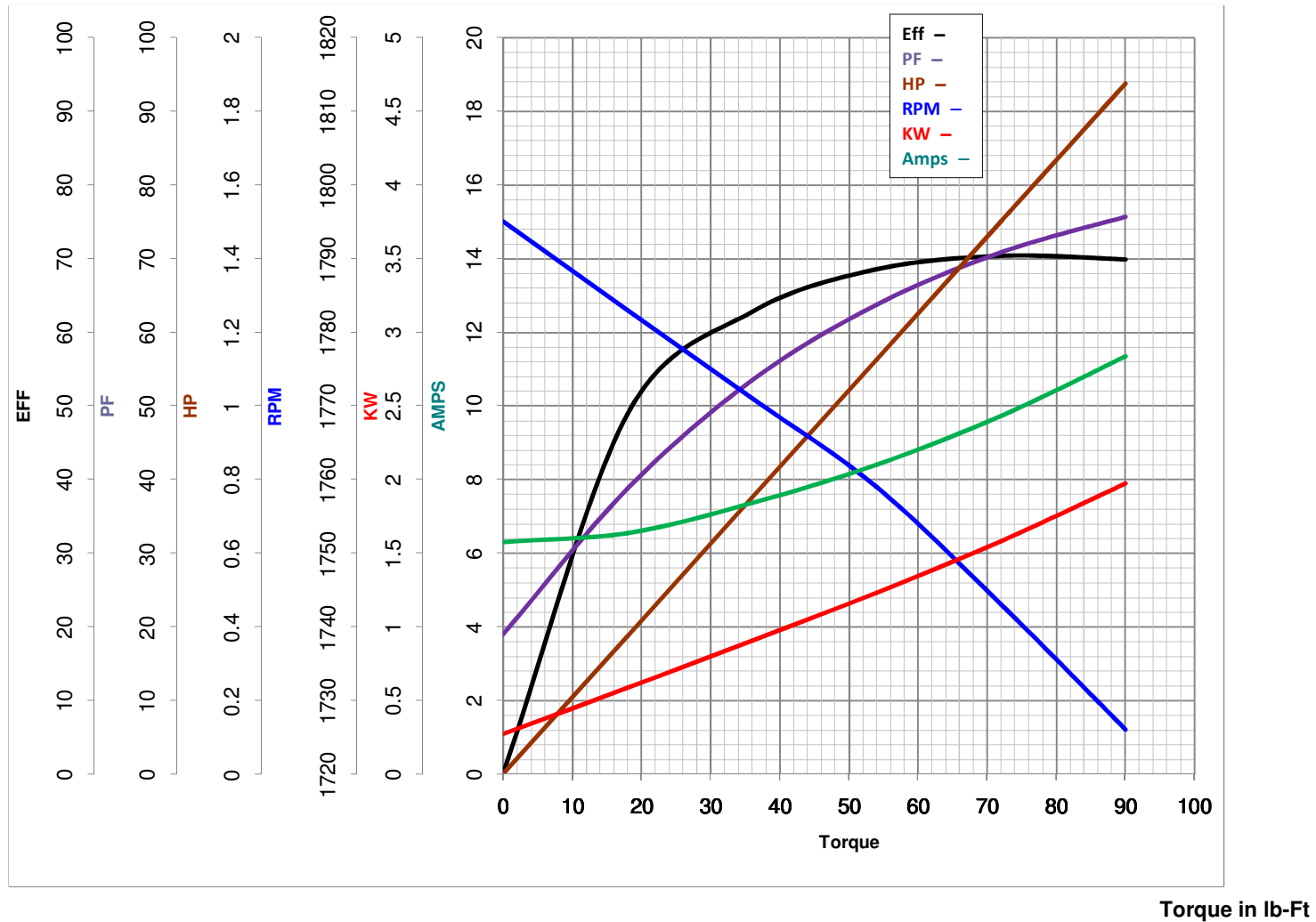
Volts

HP 1.50PHASE 160

HZ

1.5

HP

VOLTS 115/208-230Catalog No 113300.00HZ 60RPM 1725

FL TORQUE 72 lb-Ft
 BD TORQUE 150.0 lb-Ft
 LR TORQUE 150 lb-Ft

FL AMPS 19/9.5
 PU TORQUE 81.0 lb-Ft
 LR AMPS 50.95

WINDING C634320-3

Date 3/27/2018