

PRODUCT INFORMATION PACKET



Model No: C6T34VK5H

Catalog No: 113591.00

1 1/2HP..3450RPM.56H.TENV.230/460V.3PH.60HZ.CONT.NOT.40C.1.15SF.RIGID
C.WASHGUARD.C6T34VK5H

General Purpose



Regal and Leeson are trademarks of Regal Beloit Corporation or one of its affiliated companies.

©2018 Regal Beloit Corporation, All Rights Reserved. MC017097E



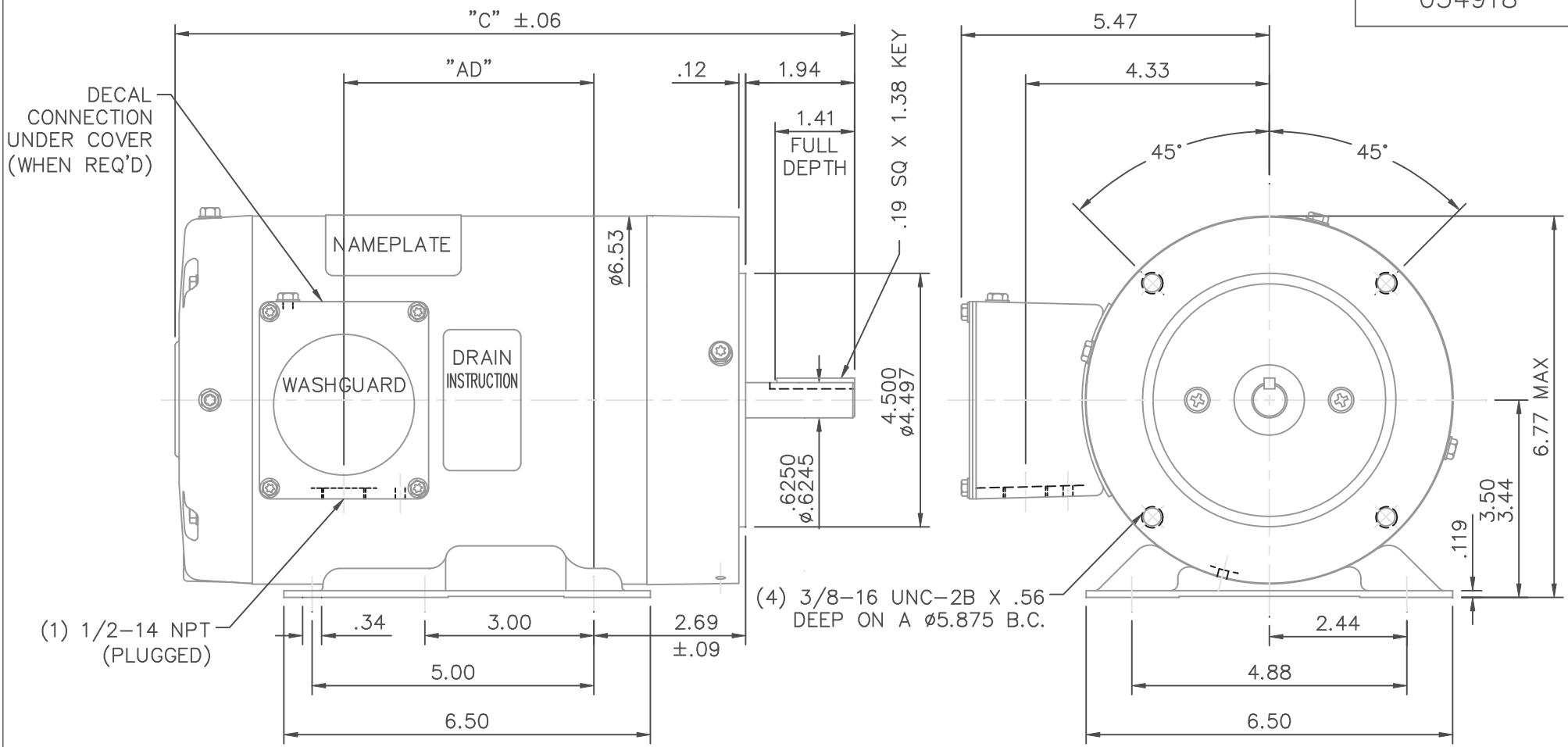


Nameplate Specifications

| | | | |
|----------------------------|---------------------------------|------------------------|------------|
| Output HP | 1.50 Hp | Output KW | 1.1 kW |
| Frequency | 60 Hz | Voltage | 230/460 V |
| Current | 3.8/1.9 A | Speed | 3450 rpm |
| Service Factor | 1.15 | Phase | 3 |
| Efficiency | 84 % | Duty | Continuous |
| Insulation Class | F | Design Code | B |
| KVA Code | L | Frame | 56HC |
| Enclosure | Totally Enclosed Non Ventilated | Overload Protector | No |
| Ambient Temperature | 40 °C | Drive End Bearing Size | 6205 |
| Opp Drive End Bearing Size | 6203 | UL | Recognized |
| CSA | Y | CE | Y |
| IP Code | 55 | | |

Technical Specifications

| | | | |
|-----------------------|-----------------------------|-----------------------|-----------------|
| Electrical Type | Squirrel Cage Induction Run | Starting Method | Across The Line |
| Poles | 2 | Rotation | Reversible |
| Mounting | Rigid base | Motor Orientation | HORIZONTAL |
| Drive End Bearing | BALL | Opp Drive End Bearing | BALL |
| Frame Material | Rolled Steel | Shaft Type | NEMA 56 |
| Overall Length | 12.56 in | Frame Length | 7.50 in |
| Shaft Diameter | 0.625 in | Shaft Extension | 1.88 in |
| Assembly/Box Mounting | F1 ONLY | | |
| Outline Drawing | 034918-750 | Connection Diagram | 005010.01 |



SPECIAL FEATURES:

- 1) SHAFT SEALS & V-RING
- 2) DRAIN HOLES IN ENDBELLS & CONDUIT BOX
- 3) STAINLESS STEEL SHAFT, HARDWARE & NAMEPLATE
- 4) GASKETS THROUGHOUT

| DASH NO. | "C" "AD" | |
|----------|----------|------|
| | "C" | "AD" |
| 700 | 12.06 | 4.44 |
| 750 | 12.56 | 4.94 |
| 800 | 13.06 | 5.44 |

MAXIMUM FACE RUNOUT .004 T.I.R.
 MAXIMUM PILOT ECCENTRICITY .004 T.I.R.
 PERMISSIBLE SHAFT RUNOUT .002 T.I.R.

| NO. | REVISION | BY & DATE | TOLERANCES UNLESS SPECIFIED | | FINISH | DRAWN | CHK | APPD | KMM | DATE | | |
|--|--|-------------|-----------------------------|--------|--------|--------|----------|----------|--------|--------------|--------------|------|
| | | | DEC. | INCHES | | | | | | | | |
| 04 | SHAFT END E.B. WAS 021255-19 PER ECO 04-1702 | LST 9/17/04 | .X | ±.1 | | | | | | RDW 02/18/02 | | |
| 03 | MOVED NP PER ENGR | RDW 5/9/03 | SW | .XX | | ±.03 | | | | | KMM 02/18/02 | |
| 02 | L.E. ENDBELL WAS 021209.27 | KMM 8/19/02 | | .XXX | | ±.005 | | | | | | |
| 01 | NAMEPLATE WAS ABOVE COND. BOX, PER ECR 71985 | RLW 6/20/02 | BJB | .XXXX | | ±.0005 | | | | | | |
| | | | CHK | ANG | | ±1/2' | | | | | | |
| THIS DRAWING IN DESIGN AND DETAIL IS OUR PROPERTY AND MUST NOT BE USED EXCEPT IN CONNECTION WITH OUR WORK ALL RIGHTS OF DESIGN AND INVENTION ARE RESERVED THIS IS AN ELECTRONICALLY GENERATED DOCUMENT - DO NOT SCALE THIS PRINT | | | | | | RFP | 02/18/02 | CAD FILE | 034918 | SIZE | DRAWING NO. | REV. |
| | | | | | | DIST | | | | A | 034918 | 04 |

005010-01

VIEW FROM OUTSIDE OF MOTOR AT SWITCH END.



| VOLTAGE | L1 | L2 | L3 | JOIN & INSULATE |
|---------|-------|-------|-------|-------------------------------|
| HIGH | T1 | T2 | T3 | (T4,T7) (T5,T8) (T6,T9) |
| LOW | T1,T7 | T2,T8 | T3,T9 | T4,T5,T6 |

| | | | | | | | | | | | |
|--|-----------------------|--------------|-----|--------------------------------|----------|--|--|--------------------|-----------|-------------|------|
| | | | | TOLERANCES UNLESS SPECIFIED | | REGAL ™ Regal Beloit America, Inc. | | DRAWN RDW 04/12/02 | | | |
| | | | | DEC. | INCHES | | | CHK | | | |
| | | | | .X | ±.1 | | | APPD | | | |
| | | | | .XX | ±.01 | | | SCALE 1=1 | | | |
| | | | | .XXX | ±.005 | TITLE | | REF FIG.2-51 | | | |
| A | UPDATED TO REGAL LOGO | SAJ 06/26/15 | AJY | .XXXX | ±.0005 | MAT'L. | | FMF | | | |
| NO. | REVISION | BY & DATE | CHK | ANG | ±1/2" | FINISH | | PREV | | | |
| THIS DRAWING IN DESIGN AND DETAIL IS OUR PROPERTY AND MUST NOT BE USED EXCEPT IN CONNECTION WITH OUR WORK ALL RIGHTS OF DESIGN AND INVENTION ARE RESERVED THIS IS AN ELECTRONICALLY GENERATED DOCUMENT - DO NOT SCALE THIS PRINT | | | | RFP | 04/12/02 | CAD FILE | | 00501001 | SIZE | DRAWING NO. | REV. |
| | | | | DIST | BRF-NLV | | | A | 005010-01 | A | |

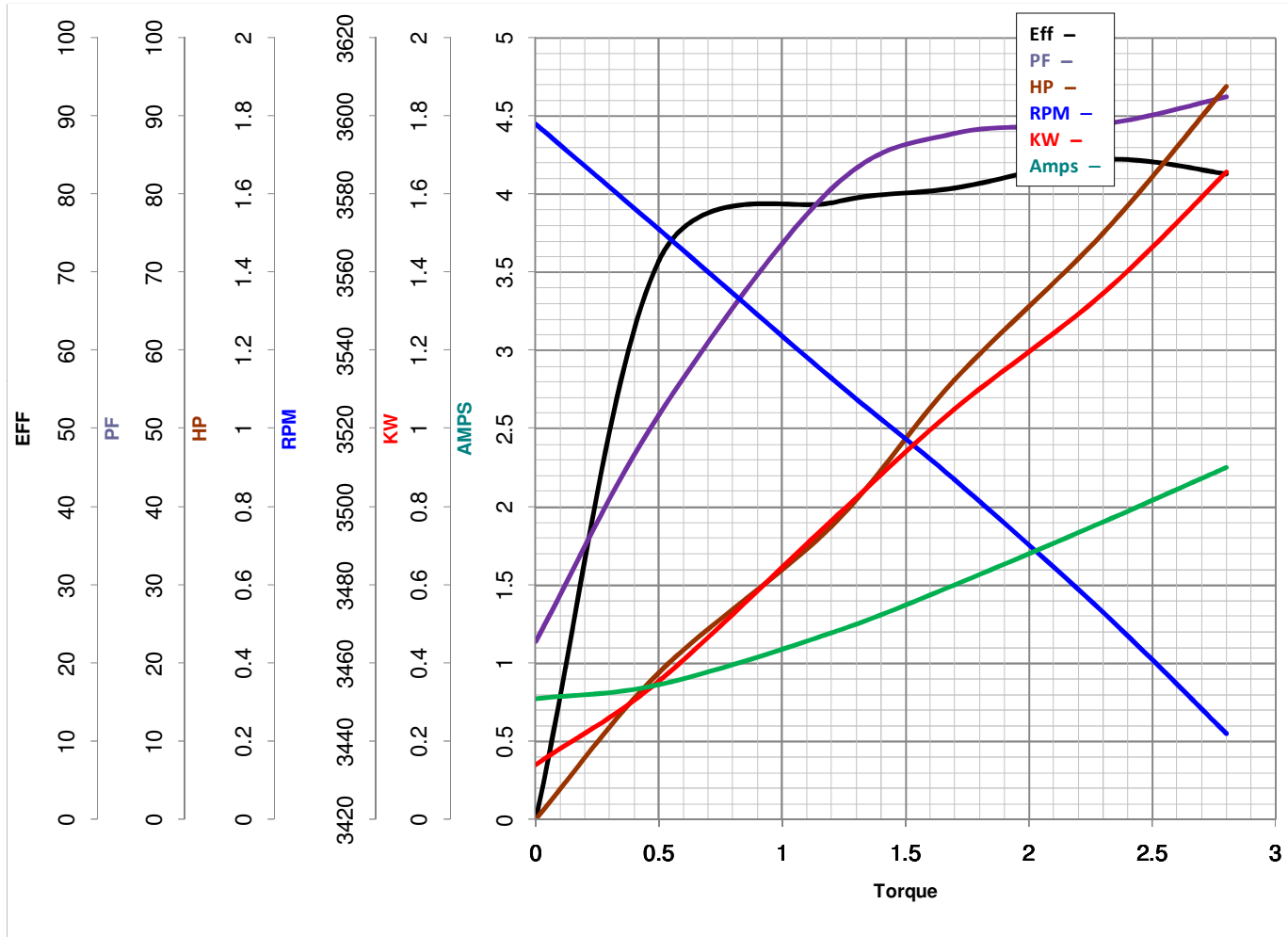


LEESON ELECTRIC CORPORATION
 TYPICAL PERFORMANCE CURVE for AC MOTOR

Model No 113591.00

Catalog No 113591.00

Curve at 460 Volts HP 1.50 PHASE 3
60 HZ
1.5 HP VOLTS 230/460
 HZ 60 RPM 3450



Torque in Oz.Ft

FL TORQUE 2.3 Oz.Ft
 BD TORQUE 9.5 Oz.Ft
 LR TORQUE 8.2 Oz.Ft

FL AMPS 3.8/1.9
 PU TORQUE 7.8 Oz.Ft
 LR AMPS 17

WINDING T632185-3

Date 5/21/2018