

PRODUCT INFORMATION PACKET



Model No: M6C14FZ8G

Catalog No: 113906.00

1HP..1425RPM.56.TEFC./V.1PH.50HZ.CONT.MANUAL.40C.1.0SF.ROUND.AG - FEED-
AUGER.M6C14FZ8G

Auger Drive



Regal and Leeson are trademarks of Regal Beloit Corporation or one of its affiliated companies.

©2018 Regal Beloit Corporation, All Rights Reserved. MC017097E





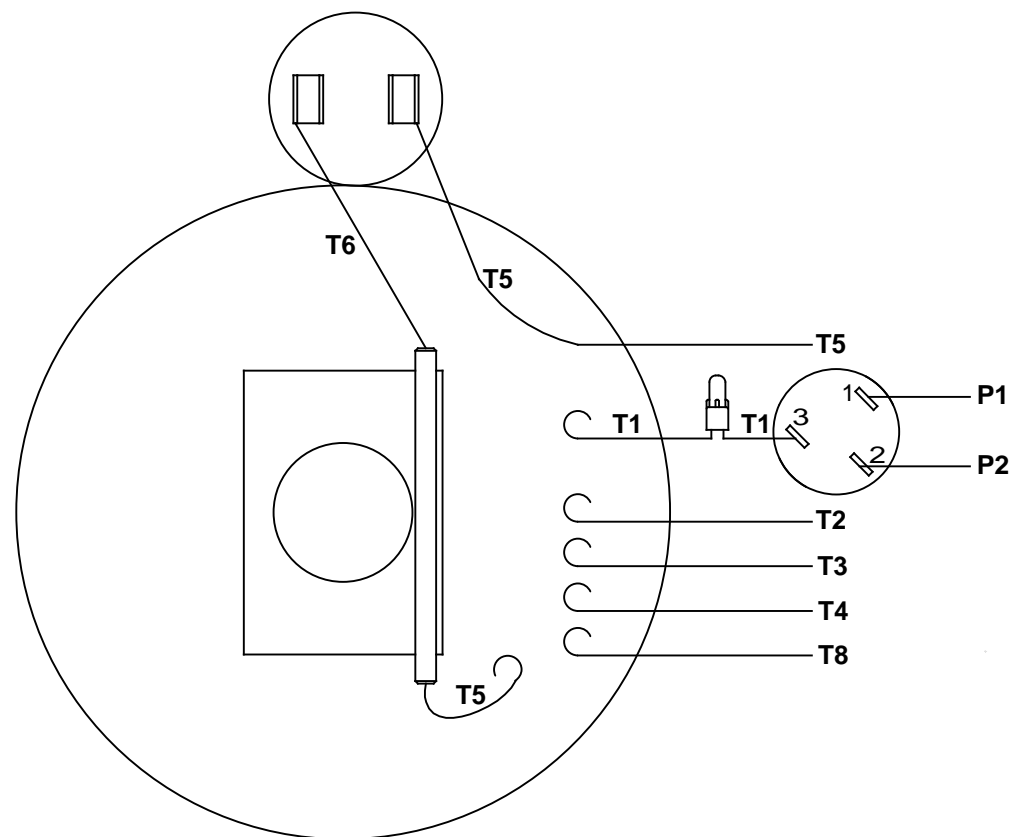
Nameplate Specifications

Output HP	1 Hp	Output KW	0.75 kW
Frequency	50 Hz	Voltage	110/220 V
Current	12.8/6.4 A	Speed	1425 rpm
Service Factor	1	Phase	1
Efficiency	68 %	Duty	Continuous
Insulation Class	F	Design Code	NO DESIGN CODE
KVA Code	J	Frame	56Z
Enclosure	Totally Enclosed Fan Cooled	Overload Protector	Manual
Ambient Temperature	40 °C	Drive End Bearing Size	6203
Opp Drive End Bearing Size	6203	UL	Recognized
CSA	Y	CE	N
IP Code	43		

Technical Specifications

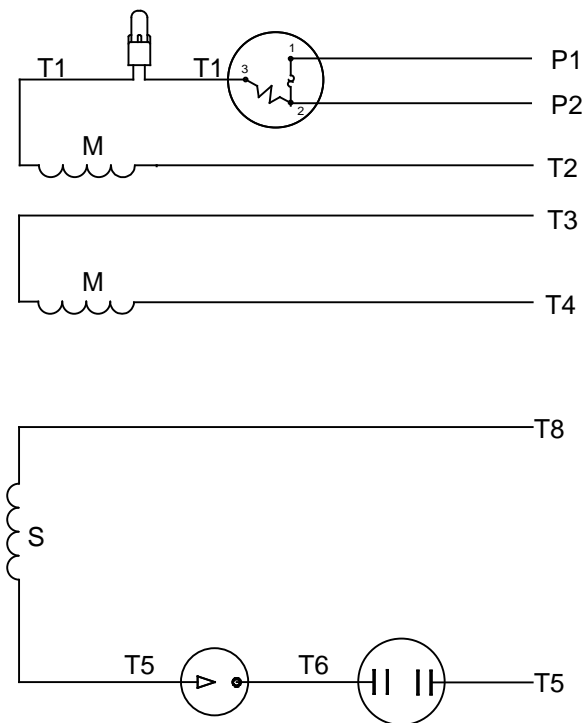
Electrical Type	Capacitor Start Induction Run	Starting Method	Across The Line
Poles	4	Rotation	Selective Counterclockwise
Mounting	Round	Motor Orientation	HORIZONTAL
Drive End Bearing	BALL	Opp Drive End Bearing	BALL
Frame Material	Rolled Steel	Shaft Type	Single Special Extension
Overall Length	12.27 in	Frame Length	7.50 in
Shaft Diameter	0.625 in	Shaft Extension	1.97 in
Assembly/Box Mounting	F1 ONLY		
Outline Drawing	028912-750C	Connection Diagram	005003.03

VIEW FROM OUTSIDE OF MOTOR AT SWITCH END


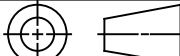


RBC PROPRIETARY AND CONFIDENTIAL INFORMATION
This document is the property of REGAL BELOIT CORPORATION ("RBC") including its subsidiaries and divisions and contains proprietary information of RBC. This document is loaned on the express condition that neither it nor the information contained therein shall be disclosed to others without the express written consent of RBC, and that the information shall be used by the recipient only as approved expressly by RBC. This document shall be returned to RBC upon its request. This document may be subject to certain restrictions under U.S. export control laws and regulations.

LINE LEADS



	ROTATION FACING LEAD END	L1	L2	JOIN	INSULATE SEPARATELY
HIGH VOLT	C.C.W.	P1	T4 T5	T2,T3 T8	P2
	C.W.	P1	T4 T8	T2,T3 T5	P2
LOW VOLT	C.C.W.	P1	T2,T4 T5	P2,T3 T8	---
	C.W.	P1	T2,T4 T8	P2,T3 T5	---

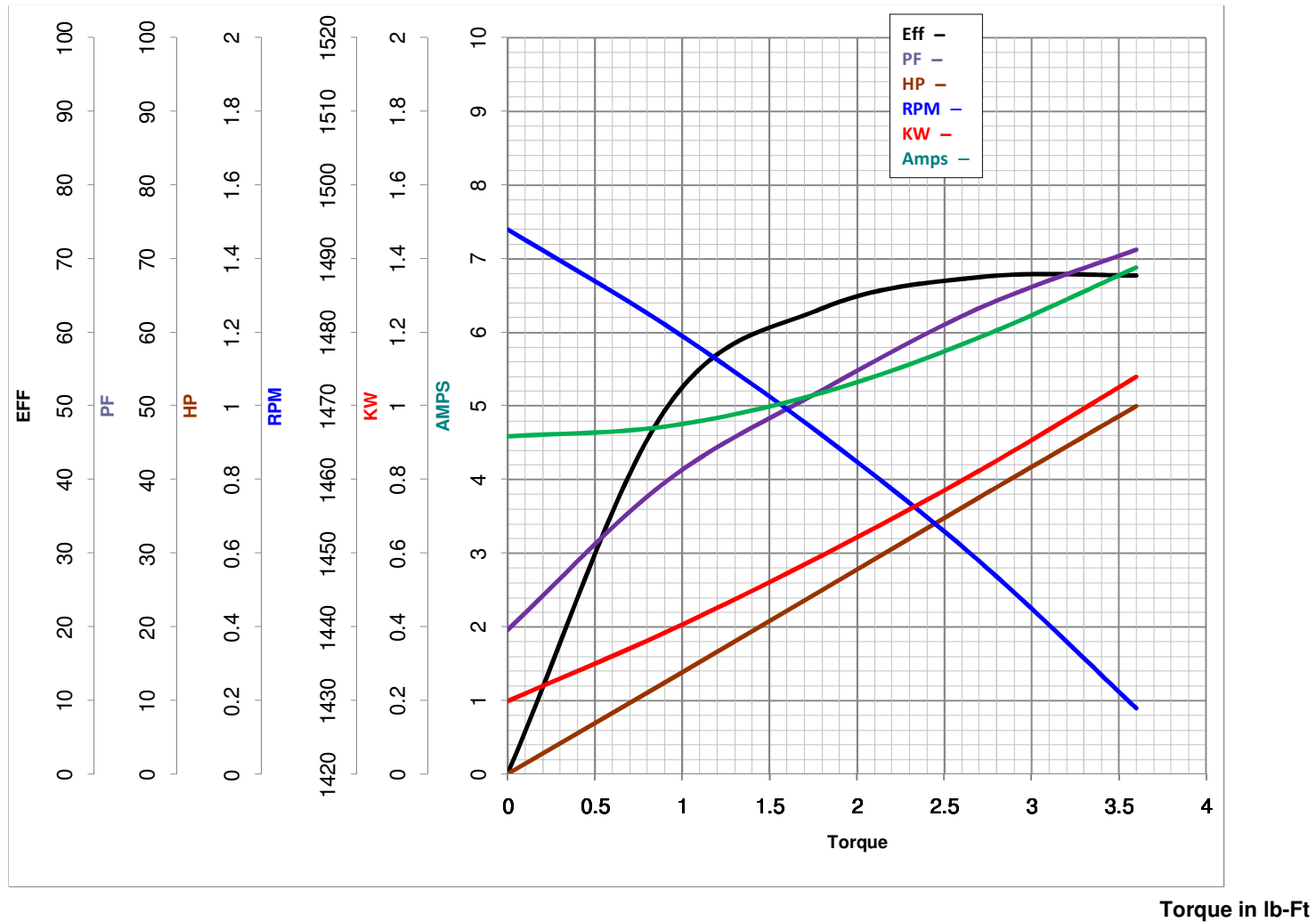
				TOLERANCES UNLESS SPECIFIED		 ELECTRIC MOTORS GEARMOTORS AND DRIVES	DRAWN WLW 08/20/79		
				DEC	INCHES		CHK ADN 08/27/76		
				.X	±.1		APPR WRK 08/27/76		
				.XX	±.01		SCALE 1:1		
06	REDRAWN IN SOLIDWORKS	VJB 7/22/2011		.XXX	±.005	TITLE EXTERNAL WIRING DIAGRAM TYPE "C" W/PROTECTOR		REF	
05	REDRAWN ON CAD	DBT 05/27/97		.XXXX	±.0005	MAT'L DECAL - 004011		FMF	
NO	REVISION	BY & DATE	CHK	ANG	±1/2°	FINISH		PAGE OF	
<div>THIRD ANGLE PROJECTION</div> 			RFP		PREV		SIZE	DRAWING NO	REV
			NETWORK FILE NAME 00500303				A	005003-03	06



LEESON ELECTRIC CORPORATION

TYPICAL PERFORMANCE CURVE for AC MOTOR

Model No 113906.00Curve at 220
50
1Volts
HZ
HPHP 1.00

VOLTS 110/220PHASE 1Catalog No 113906.00HZ 50RPM 1425

FL TORQUE 3.6 lb-Ft
 BD TORQUE 8.2 lb-Ft
 LR TORQUE 9 lb-Ft

FL AMPS 12.8/6.4
 PU TORQUE 4.4 lb-Ft
 LR AMPS 28.62

WINDING C634266-3

Date 4/12/2018