

# PRODUCT INFORMATION PACKET



Model No: 114165.00  
Catalog No: 114165.00  
Brake Motor, 0.33 HP, 1 Ph, 60 Hz, 115/230 V, 1800 RPM, 56C Frame, TENV

**Operational at 115/208-230 V @60HZ**



Regal and Leeson are trademarks of Regal Rexnord Corporation or one of its affiliated companies.  
©2023 Regal Rexnord Corporation, All Rights Reserved. MC017097E





### Nameplate Specifications

Phase	1	Output HP	0.33 Hp
Output KW	0.25 kW	Voltage	115/230 V
Speed	1725 rpm	Service Factor	1.15
Frame	56C	Enclosure	Totally Enclosed Non Ventilated
Thermal Protection	No Protection	Efficiency	70 %
Ambient Temperature	40 °C	Frequency	60 Hz
Current	5.8/2.9 A	Power Factor	54
Duty	Continuous	Insulation Class	B
Design Code	L	KVA Code	N
Drive End Bearing Size	6203	Opp Drive End Bearing Size	6203
UL	Recognized	CSA	Y
CE	N	IP Code	43
Number of Speeds	1		

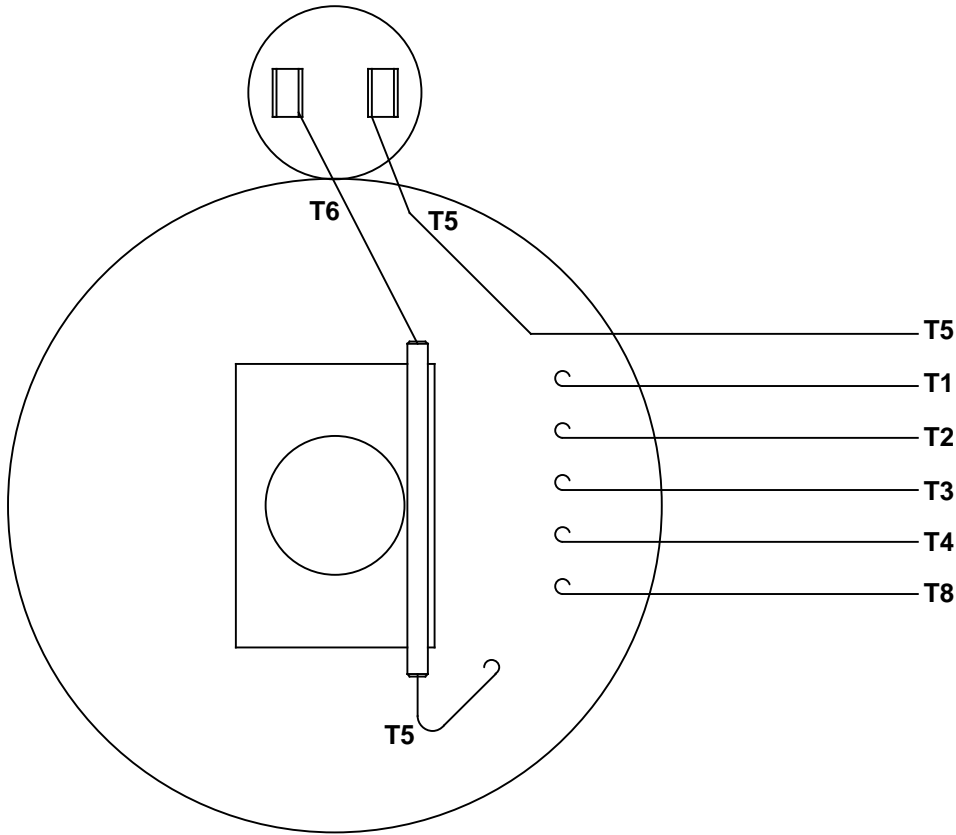
### Technical Specifications

Electrical Type	Capacitor Start Induction Run	Starting Method	Across The Line
Poles	4	Rotation	Selective Counterclockwise
Resistance Main	0 Ohms	Mounting	Rigid Base
Motor Orientation	Horizontal	Drive End Bearing	Ball
Opp Drive End Bearing	Ball	Frame Material	Rolled Steel
Shaft Type	NEMA 56	Overall Length	14.06 in
Frame Length	5.50 in	Shaft Diameter	0.625 in
Shaft Extension	1.88 in	Assembly/Box Mounting	F1 ONLY
Outline Drawing	033182-550	Connection Drawing	005005.01

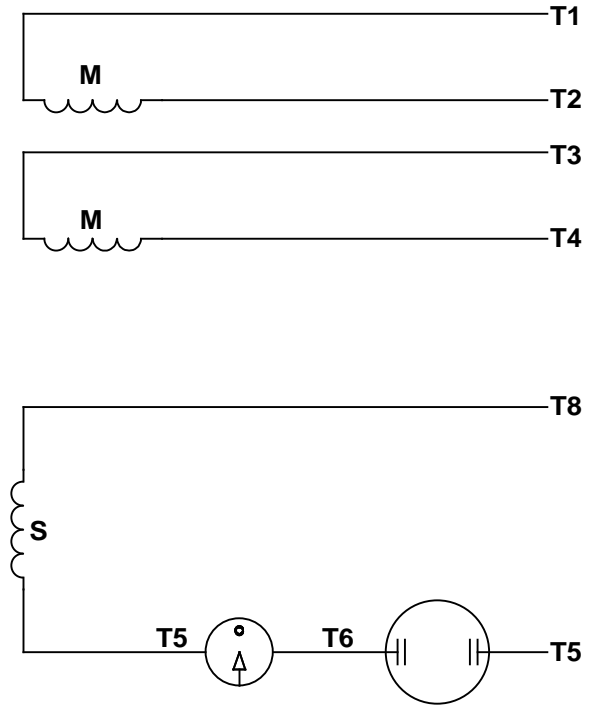
This is an uncontrolled document once printed or downloaded and is subject to change without notice. Date Created:10/13/2023



VIEW FROM OUTSIDE OF MOTOR AT SWITCH END.


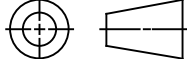


## LINE LEADS



RBC PROPRIETARY AND CONFIDENTIAL INFORMATION  
This document is the property of REGAL BELOIT CORPORATION ("RBC") including its subsidiaries and divisions and contains proprietary information of RBC. This document is loaned on the express condition that neither it nor the information contained therein shall be disclosed to others without the express written consent of RBC, and that the information shall be used by the recipient only as approved expressly by RBC. This document shall be returned to RBC upon its request. This document may be subject to certain restrictions under U.S. export control laws and regulations.

	ROTATION FACING LEAD END	L1	L2	JOIN
HIGH VOLT	C.C.W.	T1	T4, T5	T2, T3, T8
	C.W.	T1	T4, T8	T2, T3, T5
LOW VOLT	C.C.W.	T1, T3, T8	T2, T4, T5	-----
	C.W.	T1, T3, T5	T2, T4, T8	-----

--	REDRAWN IN SOLIDWORKS	VJB 02/16/11		TOLERANCES UNLESS SPECIFIED			ELECTRIC MOTORS GEARMOTORS AND DRIVES		DRAWN ADH 08/06/73	
27	UPDATED TO CURRENT STANDARDS	DBT 05/27/97		DEC	INCHES				CHK	
26	ADDED PAGE 32 (114787) & PAGE 33 (114788)	KAZ 12/20/95	PG	.X	±.1				APPR JCW 03/09/79	
25	ADDED PAGE 31	KAZ 04/19/95	DL	.XX	±.01	TITLE EXTERNAL WIRING DIAGRAM TYPE "C" W/O PROTECTOR		SCALE 1:1		
24	ADDED PAGES 29 & 30	KMM 03/30/95	DL	.XXX	±.005			REF FIG 2-23 C4A		
23	ADDED PAGE 28	KMM 01/27/95		.XXXX	±.0005	MAT'L DECAL - 004012		FMF MGI-2.4B		
NO	REVISION	BY & DATE	CHK	ANG	±1/2°	FINISH		PAGE OF		
<div>THIRD ANGLE PROJECTION</div> 			RFP		PREV		SIZE <b>A</b>	DRAWING NO <b>005005-01</b>		REV --
			NETWORK FILE NAME 00500501							



# CERTIFICATION DATA SHEET

**1051 CHEYENNE AVE.  
GRAFTON, WI 53024  
PH. 262-377-8810**

**CATALOG #:** 114165.00

**CONN. DIAGRAM:** 005005.01

**OUTLINE:** 033182-550

**MOUNTING:** F1 ONLY

**WINDING #:** C634261 NR 3 A

## TYPICAL MOTOR PERFORMANCE DATA

HP	kW	SYNC. RPM	F.L. RPM	FRAME	ENCLOSURE	KVA CODE	DESIGN
1/3	0.25	1800	1725	56C	TENV	N	L

PH	Hz	VOLTS	AMPS	START TYPE	DUTY	INSL	S.F.	AMB°C
1	60	115/208-230	5.8/2.9-2.9	ACROSS THE LINE	CONTINUOUS	B4	1.15	40

<b>FULL LOAD EFF:</b>	70	<b>3/4 LOAD EFF:</b>	62.3	<b>1/2 LOAD EFF:</b>	54.4	<b>GTD. EFF</b>		<b>ELEC. TYPE</b>
<b>FULL LOAD PF:</b>	54	<b>3/4 LOAD PF:</b>	47.4	<b>1/2 LOAD PF:</b>	39.2	66		CAP START IND RUN

F.L. TORQUE	LOCKED ROTOR AMPS	L.R. TORQUE	B.D. TORQUE	F.L. RISE°C
15.88 OZ-FT	33.8 / 16.9	56.3 OZ-FT 354 %	61.5 OZ-FT 387 %	65

SOUND PRESSURE @ 3 FT.	SOUND POWER	ROTOR WK^2	MAX. WK^2	SAFE STALL TIME	STARTS / HOUR	APPROX. MOTOR WGT
60 dBA	70 dBA	0.08 LB-FT^2	0 LB-FT^2	10 SEC.	0	31 LBS.

## \*\*\* SUPPLEMENTAL INFORMATION \*\*\*

DE BRACKET TYPE	ODE BRACKET TYPE	MOUNT TYPE	ORIENTATION	SEVERE DUTY	HAZARDOUS LOCATION	DRIP COVER	SCREENS	PAINT
C-FACE	BRAKE	RIGID	HORIZONTAL	FALSE	NONE	FALSE	NONE	BLUE - LEESON (ENAMEL)

BEARINGS		GREASE	SHAFT TYPE	SPECIAL DE	SPECIAL ODE	SHAFT MATERIAL	FRAME MATERIAL
DE	ODE						
BALL	BALL	POLYREX EM	STANDARD 56	NONE	NONE	1144 STRESSPROOF (C-223)	ROLLED STEEL
6203	6203						

THERMO-PROTECTORS				THERMISTORS	CONTROL	SPACE HEATERS
THERMOSTATS	PROTECTORS	WDG RTDs	BRG RTDs			
NONE	NOT	NONE	NONE	NONE	FALSE	NONE VOLTS

\*

N

O

T

E

S

**INVERTER TORQUE:** NONE

**INV. HP SPEED RANGE:** NONE

**ENCODER:** NONE

NONE NONE

NONE NONE PPR

**BRAKE:** REGAL SUPPLIED AND MOUNT NONE

STEARNS P/N 004225.10

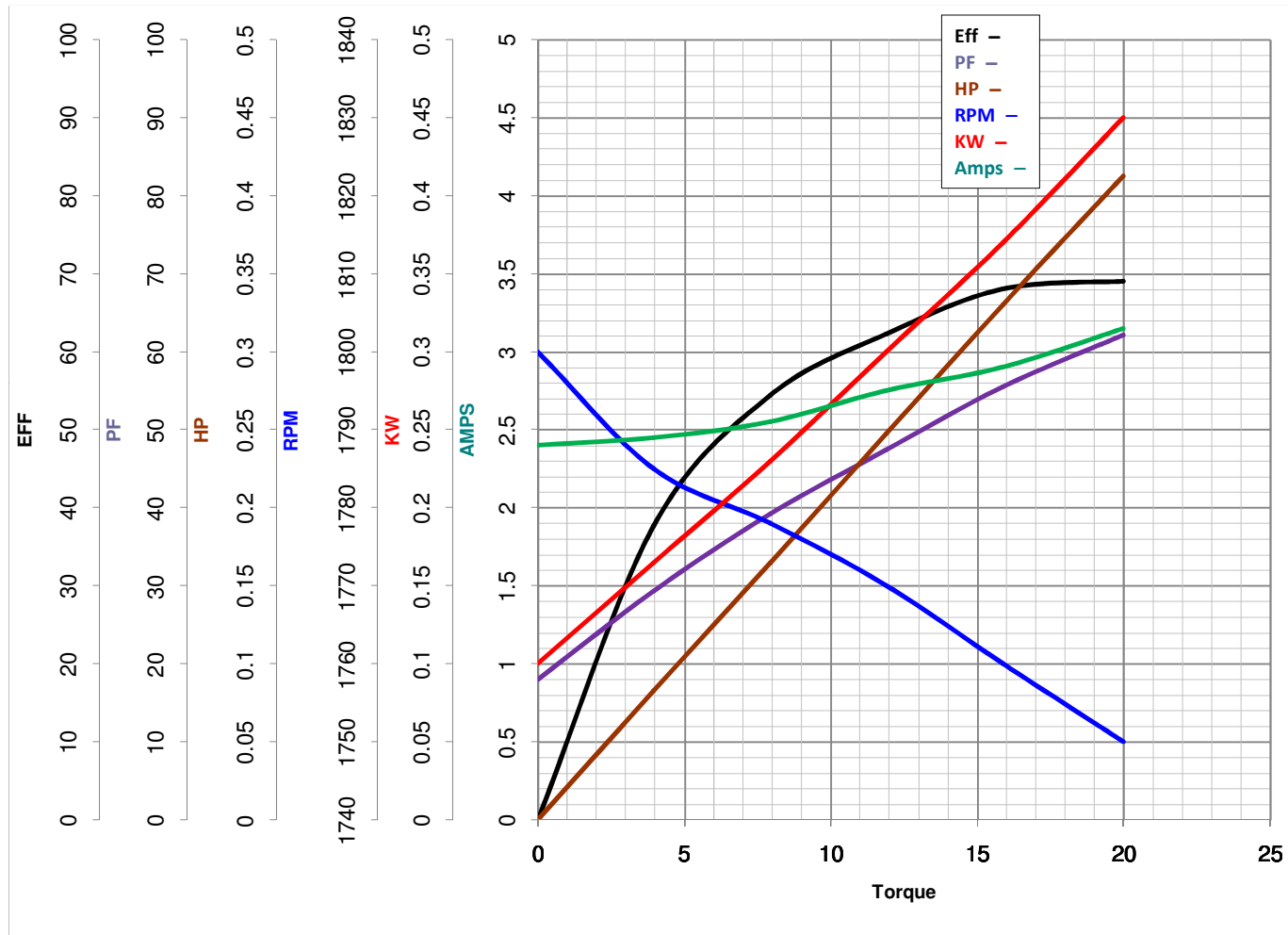
56,000 NEMA 2

3 FT-LB 115/230-95/190 V 60/50 Hz



# LEESON ELECTRIC CORPORATION

## TYPICAL PERFORMANCE CURVE for AC MOTOR

Model No 114165.00Curve at 230  
60  
0.33Volts  
HZ  
HPHP 0.34  
  
VOLTS 115/208-230PHASE 1Catalog No 114165.00HZ 60RPM 1725

Torque in Oz.Ft

FL TORQUE 15.88 Oz.Ft  
 BD TORQUE 61.5 Oz.Ft  
 LR TORQUE 56.3 Oz.Ft

FL AMPS 5.8/2.9-2.9  
 PU TORQUE 51.9 Oz.Ft  
 LR AMPS 16.9

WINDING C634261-3

Date 3/27/2018