

PRODUCT INFORMATION PACKET



Model No: A6C34XC35C

Catalog No: 116181.00

2HP..3450RPM.56.EPFC./V.1PH.60HZ.CONT.AUTOMATIC.40C.1.0SF.ROUND.EXPLOSION-
PROOF.A6C34XC35C.A

Explosion Proof



Regal and Leeson are trademarks of Regal Beloit Corporation or one of its affiliated companies.

©2018 Regal Beloit Corporation, All Rights Reserved. MC017097E





Nameplate Specifications

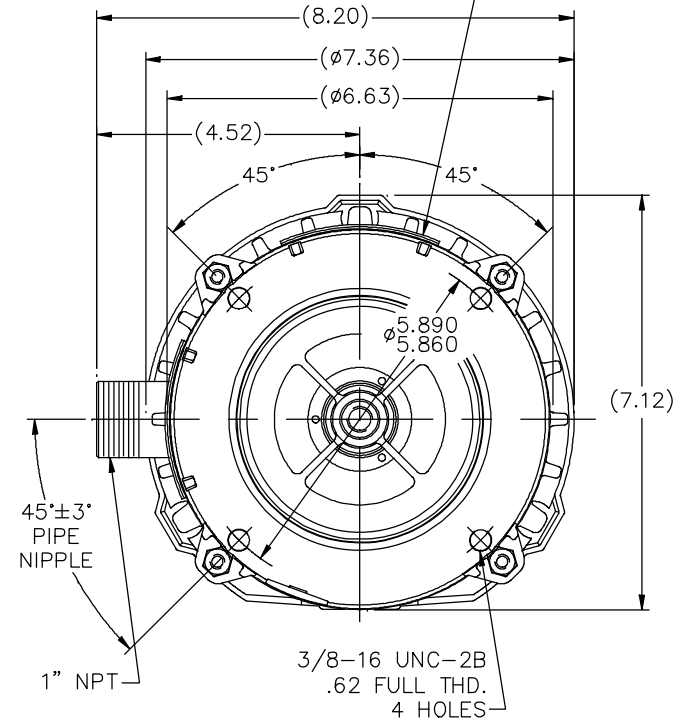
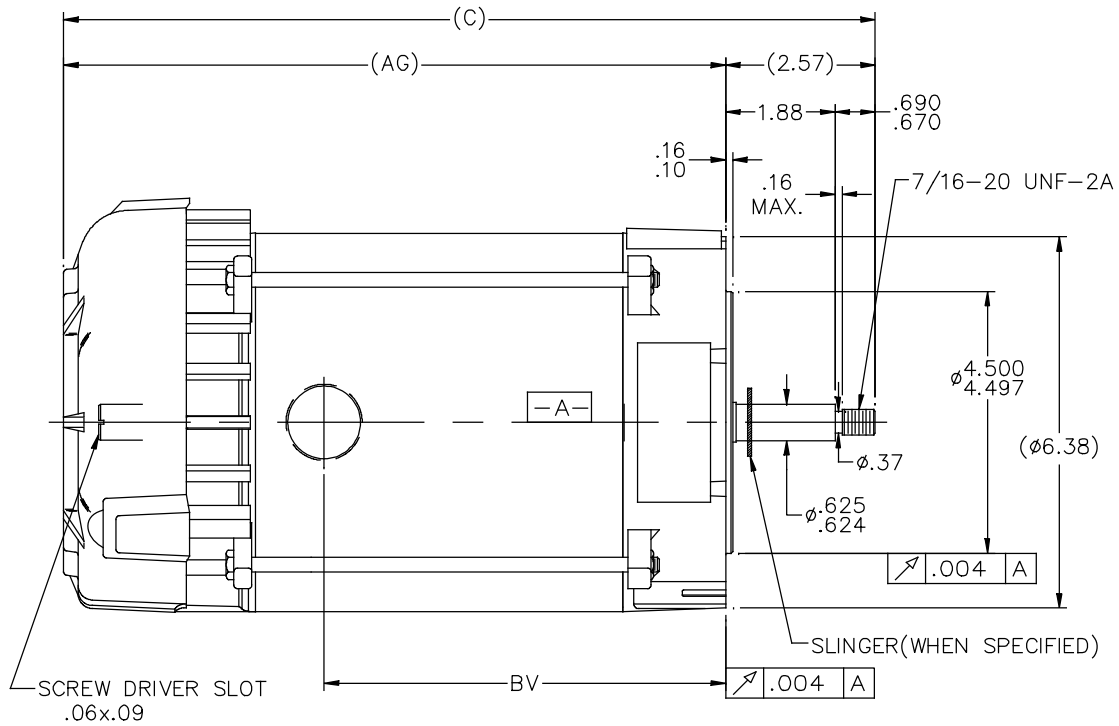
Output HP	2 Hp	Output KW	1.5 kW
Frequency	60 Hz	Voltage	115/208-230 V
Current	20.0/10.8-10.0 A	Speed	3450 rpm
Service Factor	1	Phase	1
Efficiency	75.5 %	Duty	Continuous
Insulation Class	B	Design Code	L
KVA Code	J	Frame	56J
Enclosure	Explosion Proof Fan cooled	Overload Protector	Automatic
Ambient Temperature	40 °C	Drive End Bearing Size	6203
Opp Drive End Bearing Size	6203	UL	Recognized
CSA	Y	CE	N
IP Code	54		

Technical Specifications

Electrical Type	Capacitor Start Induction Run	Starting Method	Across The Line
Poles	2	Rotation	Fixed Clockwise
Mounting	Round	Motor Orientation	HORIZONTAL
Drive End Bearing	BALL	Opp Drive End Bearing	BALL
Frame Material	Rolled Steel	Shaft Type	J
Overall Length	15.45 in	Frame Length	7.81 in
Shaft Diameter	0.625 in	Shaft Extension	2.44 in
Assembly/Box Mounting	F1 ONLY		
Outline Drawing	B-104213LE-781	Connection Diagram	A-102006-130-LE

104213LE

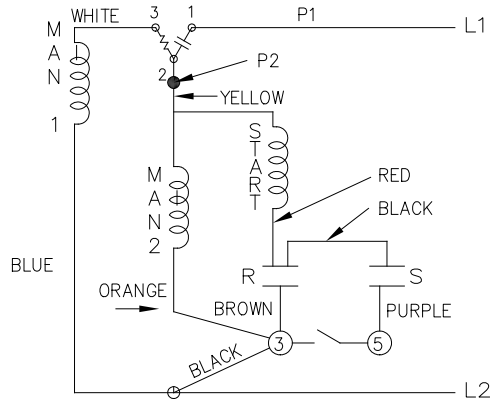
NAMEPLATES TO BE READ FROM SHAFT EXT. END



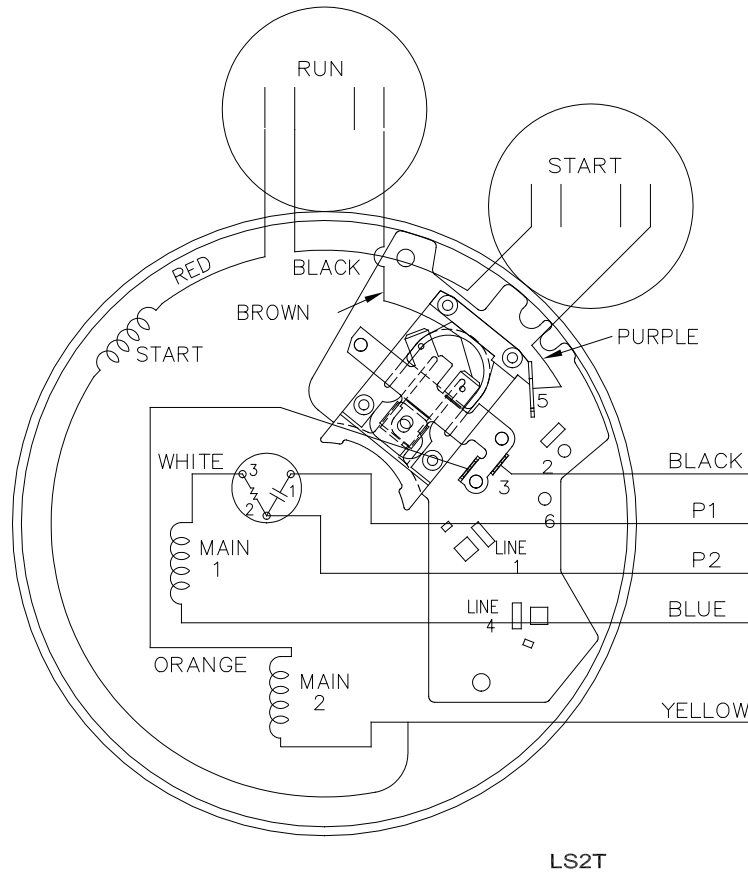
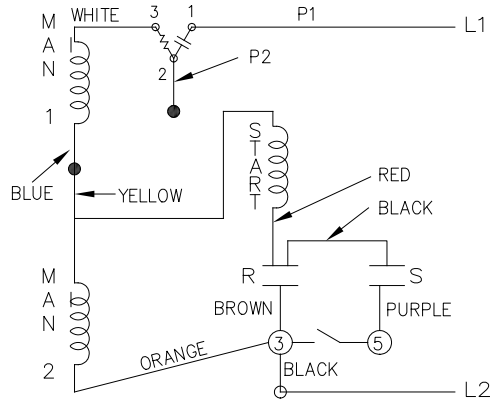
DASH	C	AG	BV
631	13.95	11.38	6.90
681	14.45	11.88	7.40
731	14.95	12.88	8.40
831	15.95	13.38	8.90
881	16.45	13.88	9.40
931	16.95	14.38	9.90
981	17.45	14.88	10.40

		TOLERANCES UNLESS SPECIFIED		LEESON		ELECTRIC MOTORS GEARMOTORS AND DRIVES		DRAWN R/JW 06-22-2007	
		DEC.	INCHES					CHK	ML 06-22-2007
		.X	±.1					APPD	GK 06-22-2007
		.XX	±.03	TITLE OUTLINE				SCALE	1=2
		.XXX	±.005	56 FR. - C'FACE - EXP. PR.				REF	
A	ADDED NOTE TO SLINGER	MVG	01/24/18	SM	.XXX	±.0005	MAT'L	FMF	
REVISION		BY & DATE		CHK	ANG	±7'30"	FINISH	PREV	
THIS DRAWING IN DESIGN AND DETAIL IS OUR PROPERTY AND MUST NOT BE USED EXCEPT IN CONNECTION WITH OUR WORK. ALL RIGHTS OF DESIGN AND INVENTION ARE RESERVED. THIS IS AN ELECTRONICALLY GENERATED DOCUMENT - DO NOT SCALE THIS PRINT				RFP	06-22-2007	CAD FILE	104213LE	SIZE	DRAWING NO. PAGE OF REV.
				DIST	WP			B	104213LE A

LOW VOLTAGE F.C.W.



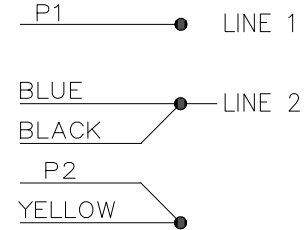
HIGH VOLTAGE F.C.W.



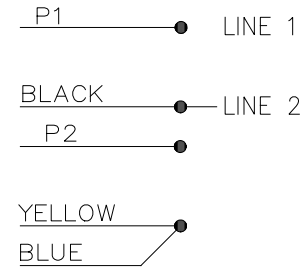
102006_130_LE


DUAL VOLTAGE
CAP. START-CAP. RUN
OVERLOAD FIXED CW
ROTATION.

LOW VOLT. CW ROT.



HIGH VOLT. CW ROT.



				TOLERANCES UNLESS SPECIFIED		 ELECTRIC MOTORS GEARMOTORS AND DRIVES	DRAWN VL 04-08-2008	
				DEC.	INCHES		CHK	
				.X	±.1	APPD VL 04-08-2008		
				.XX	±.02	SCALE 5=8		
				.XXX	±.005	REF		
01	LEFT CORNER LOW VOLT CW ROT WAS CCW ECR-0119583	KK	10/13/16	KK	.XXXX ±.0005	TITLE CONNECTION DIAGRAM 56/140 FR - 1 PH - CSCR - REV - PRT - 2V	REF	
NO.	REVISION		BY & DATE	CHK	ANG ±7'30"	MAT'L.	FMF	
THIS DRAWING IN DESIGN AND DETAIL IS OUR PROPERTY AND MUST NOT BE USED EXCEPT IN CONNECTION WITH OUR WORK ALL RIGHTS OF DESIGN AND INVENTION ARE RESERVED THIS IS AN ELECTRONICALLY GENERATED DOCUMENT - DO NOT SCALE THIS PRINT				RFP	04-08-2008	CAD FILE 102006_130_LE	PREV	
				DIST	WP	SIZE A	DRAWING NO. 102006_130_LE	PAGE OF 01

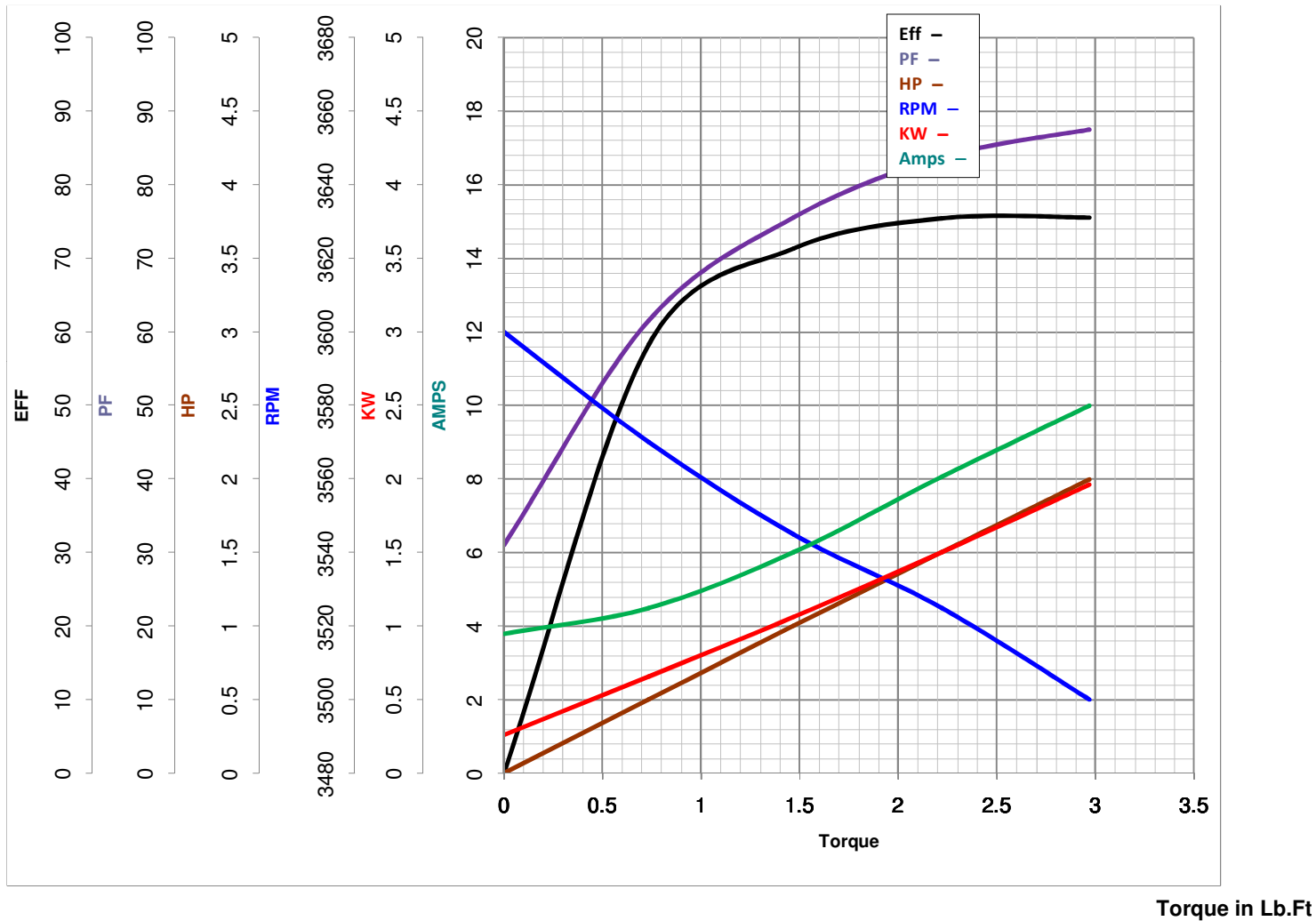


LEESON ELECTRIC CORPORATION
 TYPICAL PERFORMANCE CURVE for AC MOTOR

Model No 116181.00

Catalog No 116181.00

Curve at 230 Volts HP 2.00 PHASE 1
60 HZ
2 HP VOLTS 115/208-230
 HZ 60 RPM 3450



FL TORQUE 2.97 Lb.Ft
 BD TORQUE 7.7 Lb.Ft
 LR TORQUE 7.3 Lb.Ft

FL AMPS 20/10.8-10
 PU TORQUE 5.2 Lb.Ft
 LR AMPS 63.5

WINDING ZB298-3

Date 3/23/2018