

PRODUCT INFORMATION PACKET



Model No: A6C34XC34C

Catalog No: 116183.00

..1 1/2HP..3450RPM.56.EPFC.115/208-

230V.1PH.60HZ.CONT.40C.1SF.ROUND.A6C34XC34C.....EXPLOSION-PROOF.AUTOMATIC.....

Explosion Proof



Regal and Leeson are trademarks of Regal Beloit Corporation or one of its affiliated companies.

©2018 Regal Beloit Corporation, All Rights Reserved. MC017097E





Nameplate Specifications

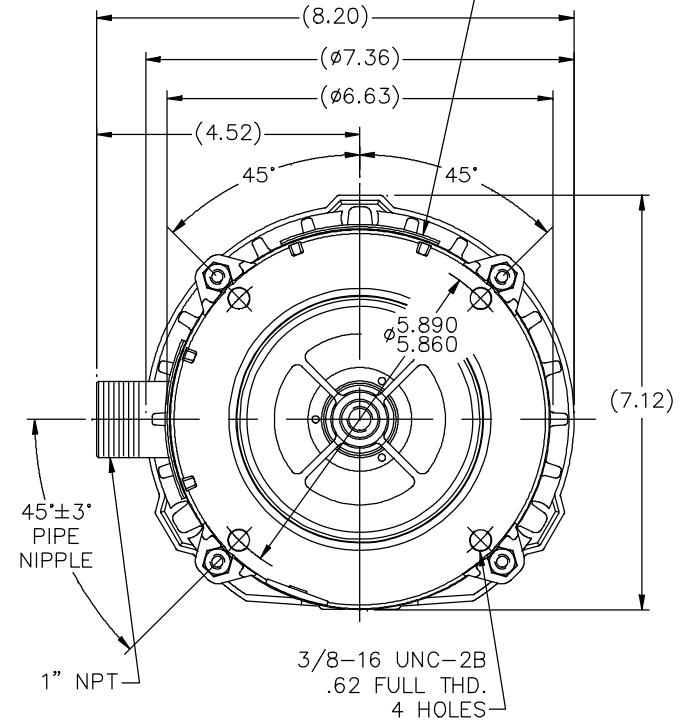
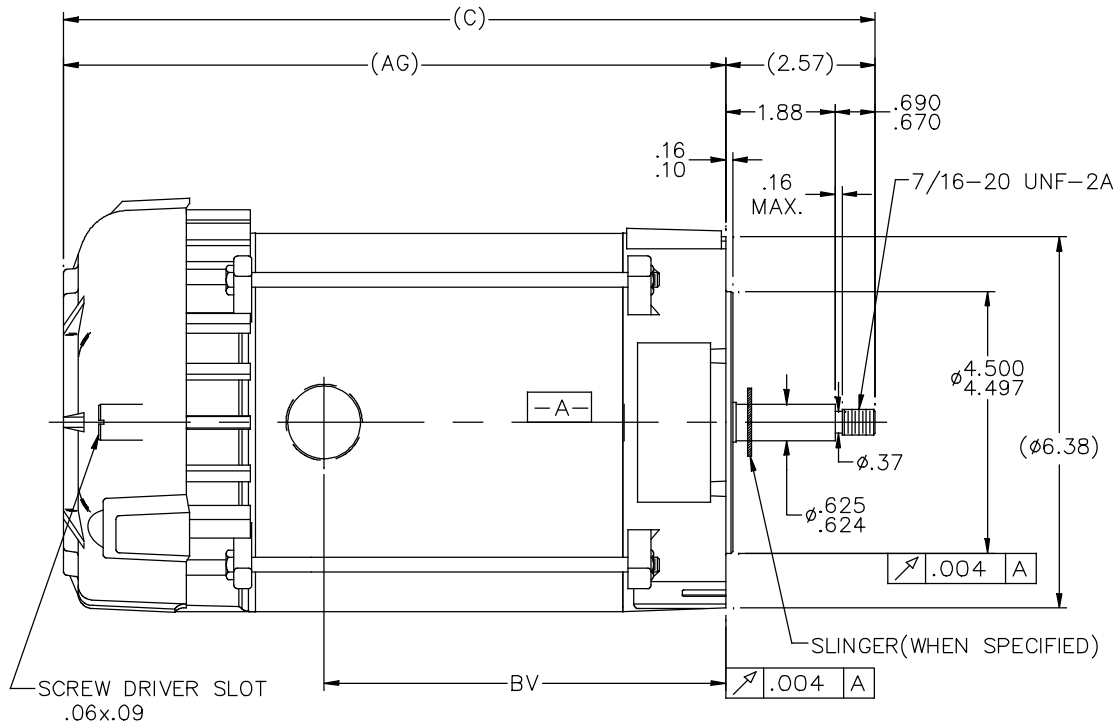
Output HP	1.50 Hp	Output KW	1.1 kW
Frequency	60 Hz	Voltage	115/208-230 V
Current	15.4/8.4-7.7 A	Speed	3450 rpm
Service Factor	1	Phase	1
Efficiency	77 %	Duty	Continuous
Insulation Class	B	Design Code	L
KVA Code	H	Frame	56J
Enclosure	Explosion Proof Fan cooled	Overload Protector	Automatic
Ambient Temperature	40 °C	Drive End Bearing Size	6203
Opp Drive End Bearing Size	6203	UL	Recognized
CSA	Y	CE	N
IP Code	54		

Technical Specifications

Electrical Type	Capacitor Start Capacitor Run	Starting Method	Across The Line
Poles	2	Rotation	Fixed Clockwise
Mounting	Round	Motor Orientation	HORIZONTAL
Drive End Bearing	BALL	Opp Drive End Bearing	BALL
Frame Material	Rolled Steel	Shaft Type	J
Overall Length	14.95 in	Frame Length	7.31 in
Shaft Diameter	0.625 in	Shaft Extension	2.44 in
Assembly/Box Mounting	F1 ONLY		
Outline Drawing	B-104213LE-731	Connection Diagram	A-102006-66-LE

104213LE

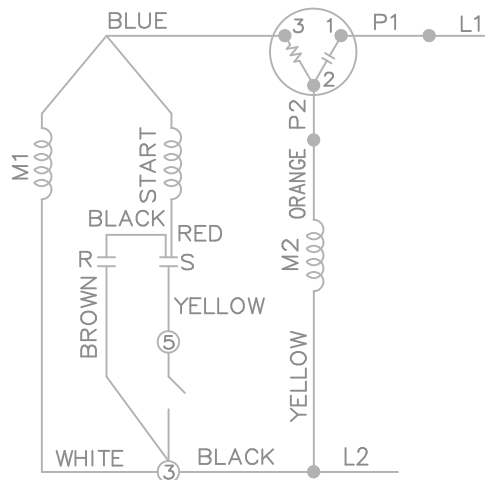
NAMEPLATES TO BE READ FROM SHAFT EXT. END



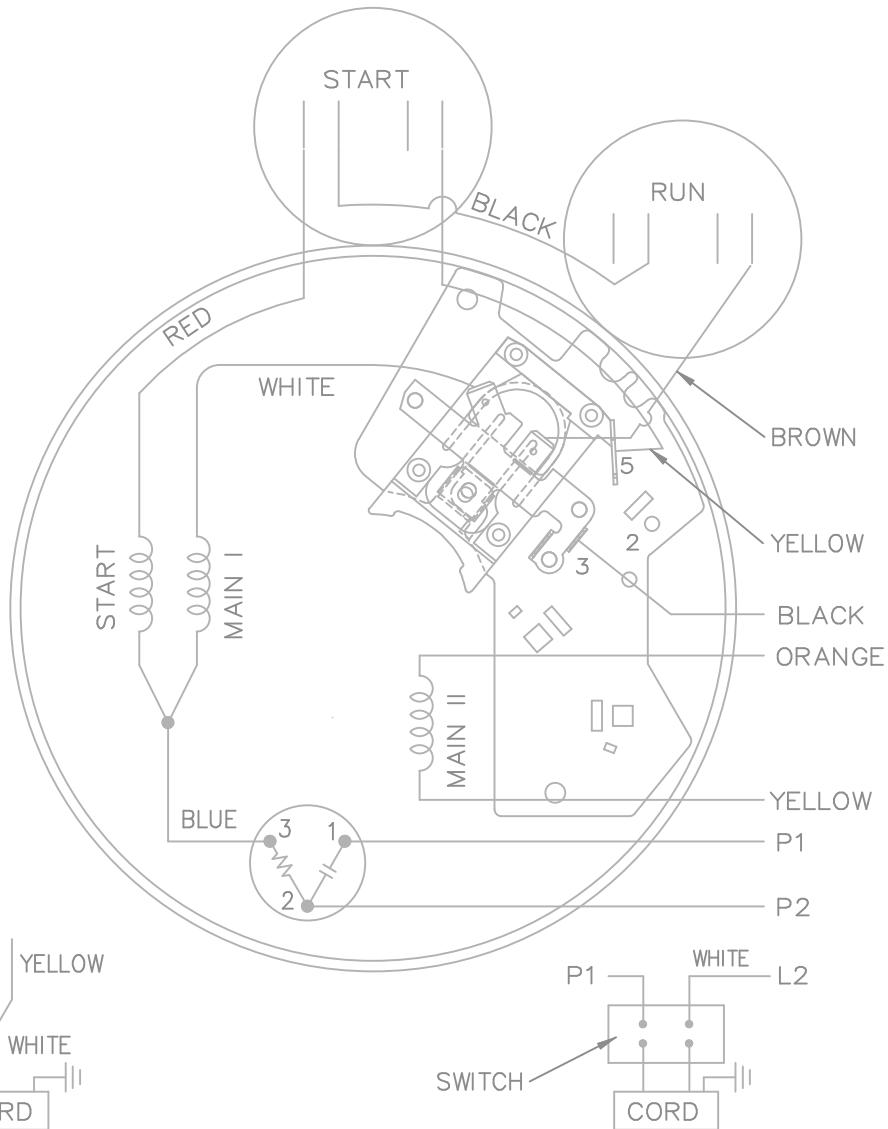
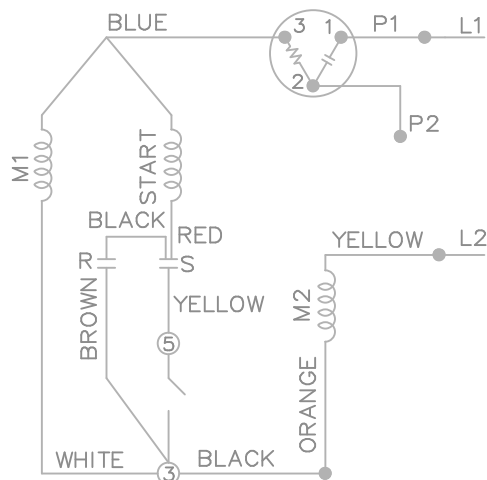
DASH	C	AG	BV
631	13.95	11.38	6.90
681	14.45	11.88	7.40
731	14.95	12.38	7.90
831	15.95	13.38	8.90
881	16.45	13.88	9.40
931	16.95	14.38	9.90
981	17.45	14.88	10.40

		TOLERANCES UNLESS SPECIFIED		LEESON		ELECTRIC MOTORS GEARMOTORS AND DRIVES		DRAWN R/JW 06-22-2007	
		DEC.	INCHES					CHK	ML 06-22-2007
		.X	±.1					APPD	GK 06-22-2007
		.XX	±.03	TITLE OUTLINE				SCALE	1=2
		.XXX	±.005	56 FR. - C'FACE - EXP. PR.				REF	
A	ADDED NOTE TO SLINGER	MVG	01/24/18	SM	.XXX	±.0005	MAT'L	FMF	
REVISION		BY & DATE		CHK	ANG	±7'30"	FINISH	PREV	
THIS DRAWING IN DESIGN AND DETAIL IS OUR PROPERTY AND MUST NOT BE USED EXCEPT IN CONNECTION WITH OUR WORK. ALL RIGHTS OF DESIGN AND INVENTION ARE RESERVED. THIS IS AN ELECTRONICALLY GENERATED DOCUMENT - DO NOT SCALE THIS PRINT				RFP	06-22-2007	CAD FILE	104213LE	SIZE	DRAWING NO. PAGE OF REV.
				DIST	WP			B	104213LE A

LOW VOLTAGE — C.W.

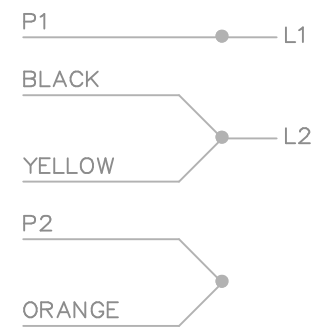


HIGH VOLTAGE — C.W.

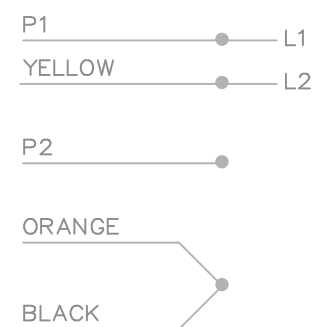



DUAL VOLTAGE
CAPACITOR START
OVERLOAD—C.W. FIXED

LOW VOLTAGE C.W. ROTATION



HIGH VOLTAGE C.W. ROTATION



		TOLERANCES UNLESS SPECIFIED		 ELECTRIC MOTORS GEARMOTORS AND DRIVES	DRAWN VL 11-23-2007	
		DEC.	INCHES		CHK	
		.X	±.1		APPD VL 11-23-2007	
		.XX	±.02		SCALE 1=1	
		.XXX	±.005		REF	
		.XXXX	±.0005	MAT'L.		
		ANG	±7'30"	FINISH		
NO.	REVISION	BY & DATE	CHK	PREV		
THIS DRAWING IN DESIGN AND DETAIL IS OUR PROPERTY AND MUST NOT BE USED EXCEPT IN CONNECTION WITH OUR WORK ALL RIGHTS OF DESIGN AND INVENTION ARE RESERVED THIS IS AN ELECTRONICALLY GENERATED DOCUMENT — DO NOT SCALE THIS PRINT		RFP 11-23-2007	CAD FILE 102006_66_LE	SIZE A	DRAWING NO. 102006_66_LE	PAGE OF REV.
		DIST WP				



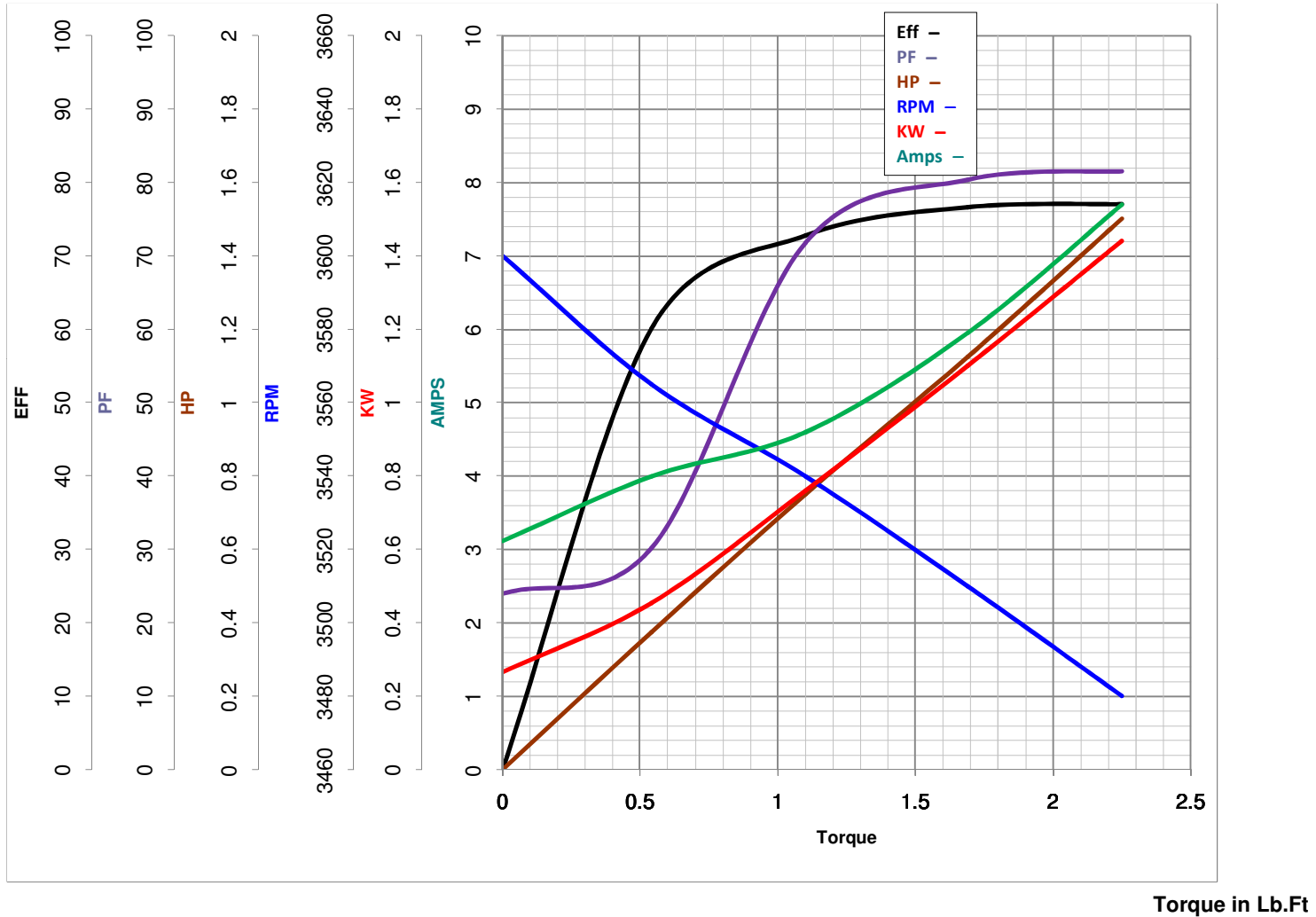
LEESON ELECTRIC CORPORATION
 TYPICAL PERFORMANCE CURVE for AC MOTOR

Model No 116183.00

Catalog No 116183.00

Curve at 230 Volts HP 1.50 PHASE 1
60 HZ
1.5 HP VOLTS 115/208-230

HZ 60 RPM 3450



FL TORQUE 2.25 Lb.Ft
 BD TORQUE 5.4 Lb.Ft
 LR TORQUE 4.4 Lb.Ft

FL AMPS 15.4/8.4-7.7
 PU TORQUE 3.7 Lb.Ft
 LR AMPS 42.2

WINDING ZB256-3

Date 4/12/2018