

# PRODUCT INFORMATION PACKET



Model No: 116350.00

Catalog No: 116350.00

Premium Duck™ General Purpose Motor, 0.50 HP, 1 Ph, 60 Hz, 115/230 V, 1800 RPM, 56C Frame, TENV

Operational at 115/208-230 V @60HZ



Regal and Leeson are trademarks of Regal Rexnord Corporation or one of its affiliated companies.

©2023 Regal Rexnord Corporation, All Rights Reserved. MC017097E





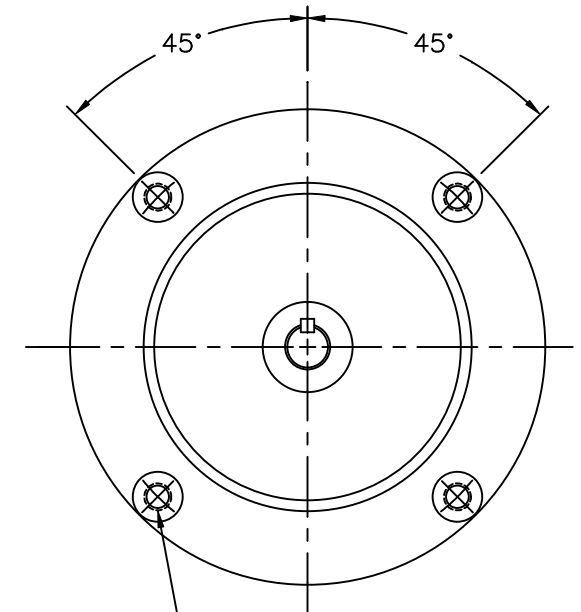
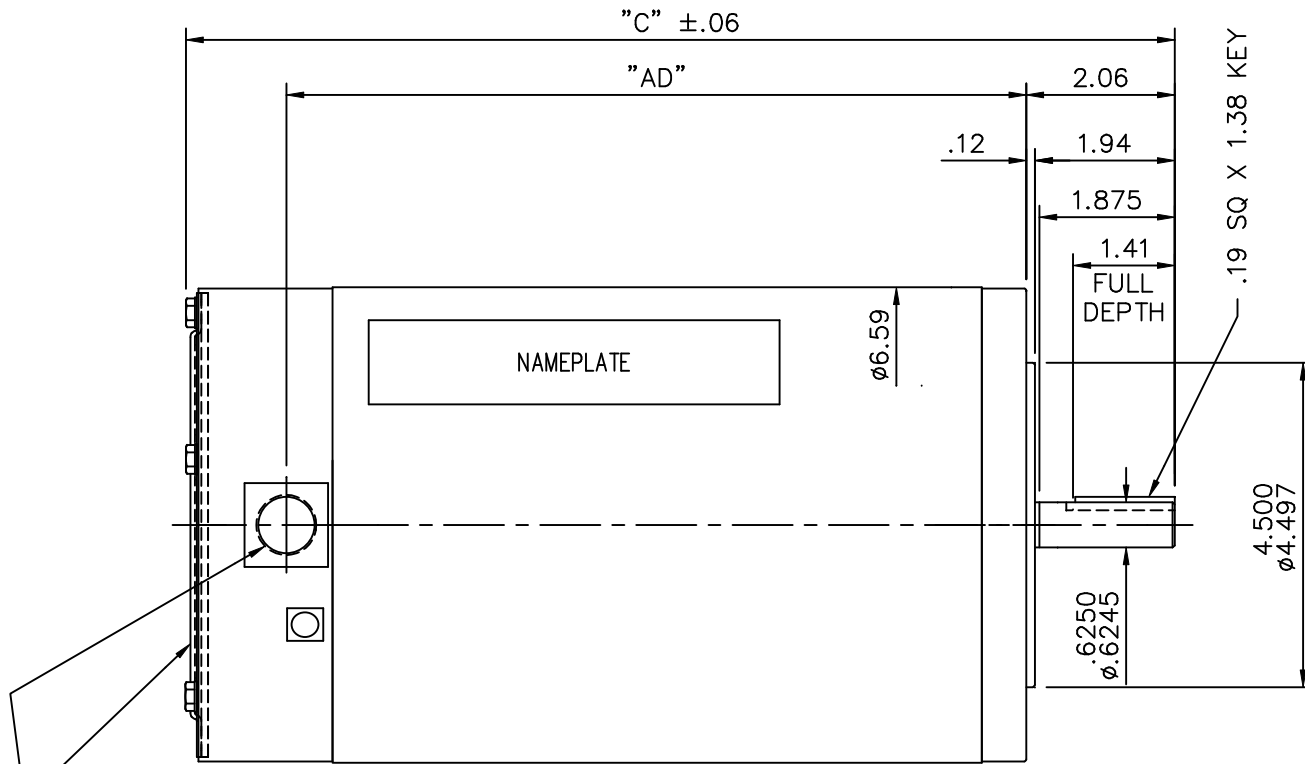
## Nameplate Specifications

Phase	1	Output HP	0.50 Hp
Output KW	0.37 kW	Voltage	115/230 V
Speed	1725 rpm	Service Factor	1.15
Frame	56C	Enclosure	Totally Enclosed Non Ventilated
Thermal Protection	No Protection	Efficiency	74 %
Ambient Temperature	40 °C	Frequency	60 Hz
Current	6.8/3.4 A	Power Factor	64
Duty	Continuous	Insulation Class	F
Design Code	L	KVA Code	L
Drive End Bearing Size	6205	Opp Drive End Bearing Size	6203
UL	No	CSA	Y
CE	N	IP Code	55
Number of Speeds	1		

## Technical Specifications

Electrical Type	Capacitor Start Induction Run	Starting Method	Across The Line
Poles	4	Rotation	Selective Counterclockwise
Resistance Main	3.55 Ohms	Mounting	Round
Motor Orientation	Horizontal	Drive End Bearing	Ball
Opp Drive End Bearing	Ball	Frame Material	Rolled Steel
Shaft Type	NEMA 56	Overall Length	12.70 in
Frame Length	8.00 in	Shaft Diameter	0.625 in
Shaft Extension	1.88 in	Assembly/Box Mounting	F1 ONLY
Outline Drawing	034992-800	Connection Drawing	005278.01

034992



(4) 3/8-16 UNC-2B X .56  
DEEP ON A 5.875 B.C.  
(WITH HOLE PLUG)

DECAL - S.S SWITCH  
UNDER COVER


(1) 1/2-14 NPT  
(PLUGGED)

### SPECIAL FEATURES:

VITON CONDUIT BOX & COVER GASKETS  
VITON O-RINGS IN ENDBELL RABBETS  
VITON SHAFT SEAL  
BREATHING PLUGS IN L.E. ENDBELL (B.I.C.B.)  
ALL STAINLESS STEEL CONSTRUCTION

DASH NO.	"C"	"AD"
700	11.70	8.25
750	12.20	8.75
800	12.70	9.25
850	13.20	9.75
900	13.70	10.25

MAXIMUM FACE RUNOUT TO BE .004 T.I.R.  
MAXIMUM PILOT ECCENTRICITY .004 T.I.R.  
PERMISSIBLE SHAFT RUNOUT .002 T.I.R.

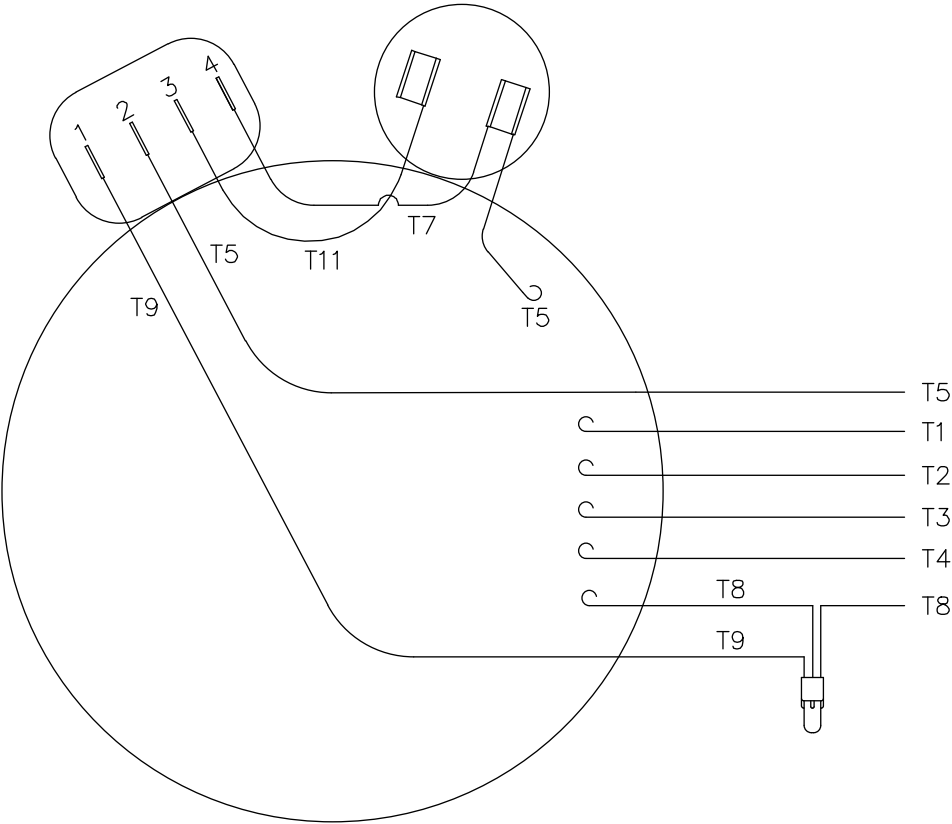
				TOLERANCES UNLESS SPECIFIED			ELECTRIC MOTORS GEARMOTORS AND DRIVES		DRAWN LST 3/25/03	
				DEC.	INCHES				CHK RW 3/25/03	
				.X	±.1				APPD	
				.XX	±.03				SCALE 3=8	
02	ADDED HOLE PLUGS PER ECO 03-617	LST 8/7/03		.XXX	±.005	TITLE OUTLINE- 56C FRAME TENV- "C" FACE		REF 034991		
01	REVISED NAMEPLATE	JJK 7/24/03		.XXXX	±.0005			MAT'L. STAINLESS STEEL DUCK		FMF 116349
NO.	REVISION	BY & DATE	CHK	ANG	±1/2"	FINISH		PREV		
THIS DRAWING IN DESIGN AND DETAIL IS OUR PROPERTY AND MUST NOT BE USED EXCEPT IN CONNECTION WITH OUR WORK ALL RIGHTS OF DESIGN AND INVENTION ARE RESERVED THIS IS AN ELECTRONICALLY GENERATED DOCUMENT - DO NOT SCALE THIS PRINT			RFP		CAD FILE 034992		SIZE A	DRAWING NO. 034992		REV. 02
			DIST							

```
ERROR: syntaxerror  
OFFENDING COMMAND: --nostringval--
```

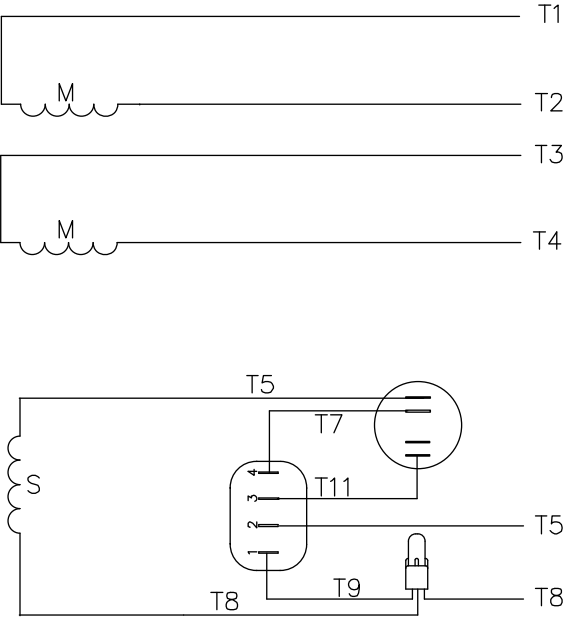
```
STACK:
```

```
/initialize  
-dictionary-  
/Pscript_WinNT_Compat  
-dictionary-
```

VIEW FROM OUTSIDE OF MOTOR AT SWITCH END



LINE LEADS



	ROTATION FACING LEAD END	L1	L2	JOIN & INSULATE
HIGH VOLT	C.C.W.	T1	T4 T5	T2,T3 T8
	C.W.	T1	T4 T8	T2,T3 T5
LOW VOLT	C.C.W.	T1,T3 T8	T2,T4 T5	
	C.W.	T1,T3 T5	T2,T4 T8	

NO.	REVISION	BY & DATE	CHK	ANG	TOLERANCES UNLESS SPECIFIED	
					DEC.	INCHES
					.X	±.1
					.XX	±.01
05	ADDED DECAL FOR STOCK MODELS ECR 0042509	GWS 9/10/13			.XXX	±.005
04	REDRAWN ON CAD	DBT 6/06/97			.XXXX	±.0005
					±1/2'	



ELECTRIC MOTORS  
GEARMOTORS  
AND DRIVES

TITLE	EXTERNAL WIRING DIAGRAM TYPE "C" W/O PROTECTOR
MAT'L.	DECAL - 004012
FINISH STOCK MODELS TO USE DECAL	214-0122-001

DRAWN	PG 01/09/88
CHK	
APPD	DJW 01/16/88
SCALE	1=1
REF	005242
FMF	6C17WB1
PREV	

THIS DRAWING IN DESIGN AND DETAIL IS OUR PROPERTY AND MUST NOT BE USED EXCEPT  
IN CONNECTION WITH OUR WORK ALL RIGHTS OF DESIGN AND INVENTION ARE RESERVED  
THIS IS AN ELECTRONICALLY GENERATED DOCUMENT - DO NOT SCALE THIS PRINT

RFP 04/18/02  
DIST BRF

CAD FILE 00527801

SIZE  
A

DRAWING NO.  
005278-01

REV.  
05



# CERTIFICATION DATA SHEET

**1051 CHEYENNE AVE.  
GRAFTON, WI 53024  
PH. 262-377-8810**

**CONN. DIAGRAM:** 005278.01

**CATALOG #:** 116350.00

**OUTLINE:** 034992-800

**MOUNTING:** F1 ONLY

**WINDING #:** C634289 NR 3 B

## TYPICAL MOTOR PERFORMANCE DATA

HP	kW	SYNC. RPM	F.L. RPM	FRAME	ENCLOSURE	KVA CODE	DESIGN
1/2	0.37	1800	1725	56C	TENV	L	L

PH	Hz	VOLTS	AMPS	START TYPE	DUTY	INSL	S.F.	AMB°C
1	60	115/208-230	6.8/3.4-3.4	ACROSS THE LINE	CONTINUOUS	F4	1.15	40

<b>FULL LOAD EFF:</b>	74	<b>3/4 LOAD EFF:</b>	71.6	<b>1/2 LOAD EFF:</b>	66.3	<b>GTD. EFF</b>		<b>ELEC. TYPE</b>
<b>FULL LOAD PF:</b>	64	<b>3/4 LOAD PF:</b>	54.8	<b>1/2 LOAD PF:</b>	45.2	70		CAP START IND RUN

F.L. TORQUE	LOCKED ROTOR AMPS	L.R. TORQUE	B.D. TORQUE	F.L. RISE°C
24 OZ-FT	41 / 20.5	82 OZ-FT 342 %	64 OZ-FT 267 %	86

SOUND PRESSURE @ 3 FT.	SOUND POWER	ROTOR WK^2	MAX. WK^2	SAFE STALL TIME	STARTS / HOUR	APPROX. MOTOR WGT
60 dBA	70 dBA	0.01 LB-FT^2	0 LB-FT^2	0 SEC.	0	38 LBS.

## \*\*\* SUPPLEMENTAL INFORMATION \*\*\*

DE BRACKET TYPE	ODE BRACKET TYPE	MOUNT TYPE	ORIENTATION	SEVERE DUTY	HAZARDOUS LOCATION	DRIP COVER	SCREENS	PAINT
C-FACE	STANDARD	ROUND	HORIZONTAL	FALSE	NONE	FALSE	NONE	NO PAINT

BEARINGS		GREASE	SHAFT TYPE	SPECIAL DE	SPECIAL ODE	SHAFT MATERIAL	FRAME MATERIAL
DE	ODE						
BALL	BALL	POLYREX EM	STANDARD 56	NONE	NONE	303 STAINLESS (C-501)	ROLLED STEEL
6205	6203						

THERMO-PROTECTORS				THERMISTORS	CONTROL	SPACE HEATERS
THERMOSTATS	PROTECTORS	WDG RTDs	BRG RTDs			
NONE	NOT	NONE	NONE	NONE	FALSE	NONE VOLTS

\*

N

O

T

E

S

**INVERTER TORQUE:** NONE  
**INV. HP SPEED RANGE:** NONE

**ENCODER:** NONE  
NONE NONE  
NONE NONE PPR

**BRAKE:** NONE NONE  
NONE P/N NONE  
NONE NONE  
NONE FT-LB NONE V NONE Hz



# LEESON ELECTRIC CORPORATION

## TYPICAL PERFORMANCE CURVE for AC MOTOR

Model No 116350.00Catalog No 116350.00

Curve at

230

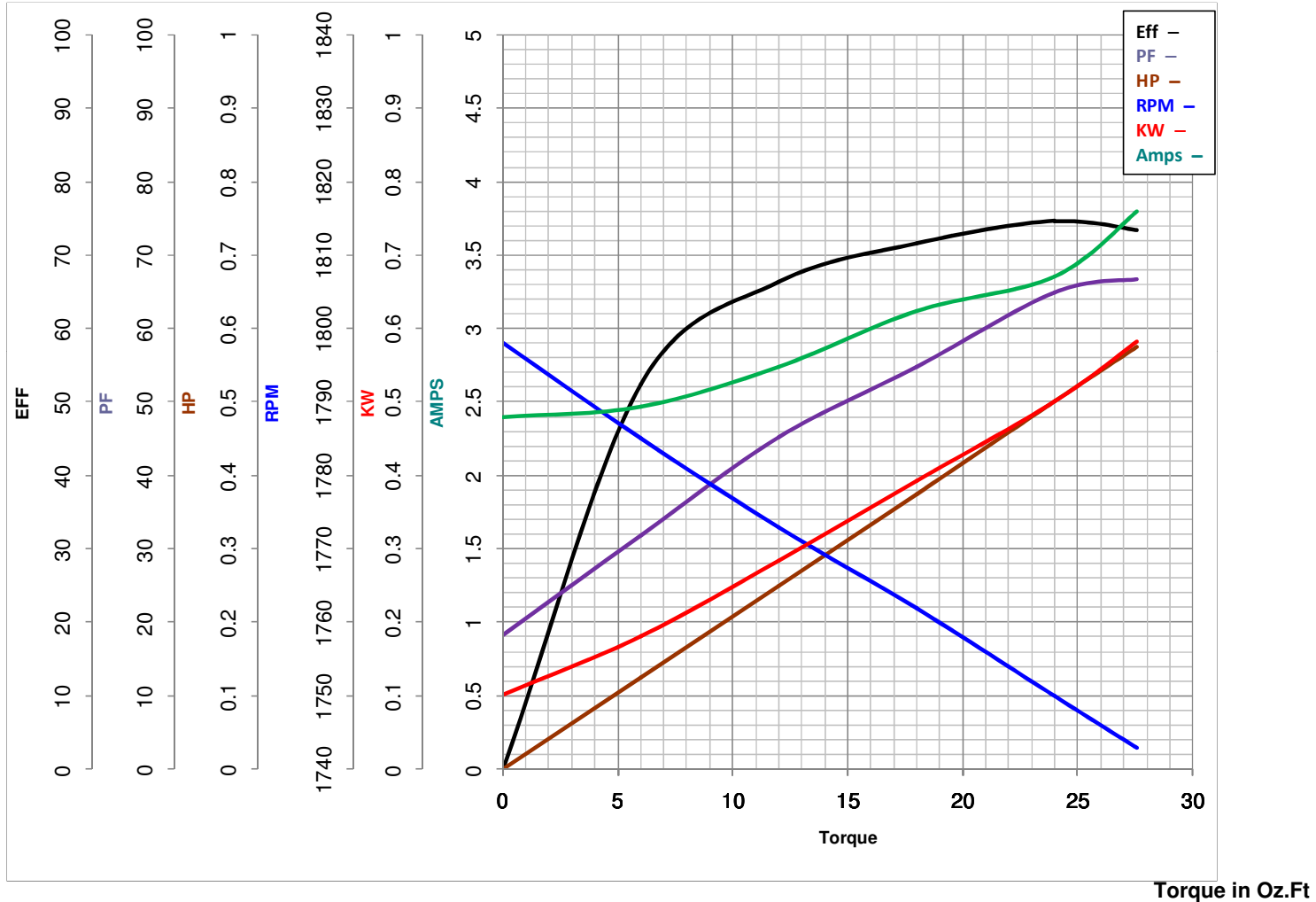
Volts

HP 0.50PHASE 160

HZ

0.5

HP

VOLTS 115/208-230HZ 60RPM 1725FL TORQUE 24 Oz.FtBD TORQUE 64.0 Oz.FtLR TORQUE 82 Oz.Ft

WINDING C634289-3

FL AMPS 6.8/3.4-3.4PU TORQUE 60.0 Oz.FtLR AMPS 20.5Date 4/12/2018