

PRODUCT INFORMATION PACKET



Model No: CZ6T34VK21A

Catalog No: 117273.00

..1HP..3600RPM.56HC.TENV.230/460V.3PH.60HZ.CONT.40C.1.15SF.RIGID-C.....Premium Washdown.....
3 Phase



Regal and Leeson are trademarks of Regal Beloit Corporation or one of its affiliated companies.

©2018 Regal Beloit Corporation, All Rights Reserved. MC017097E



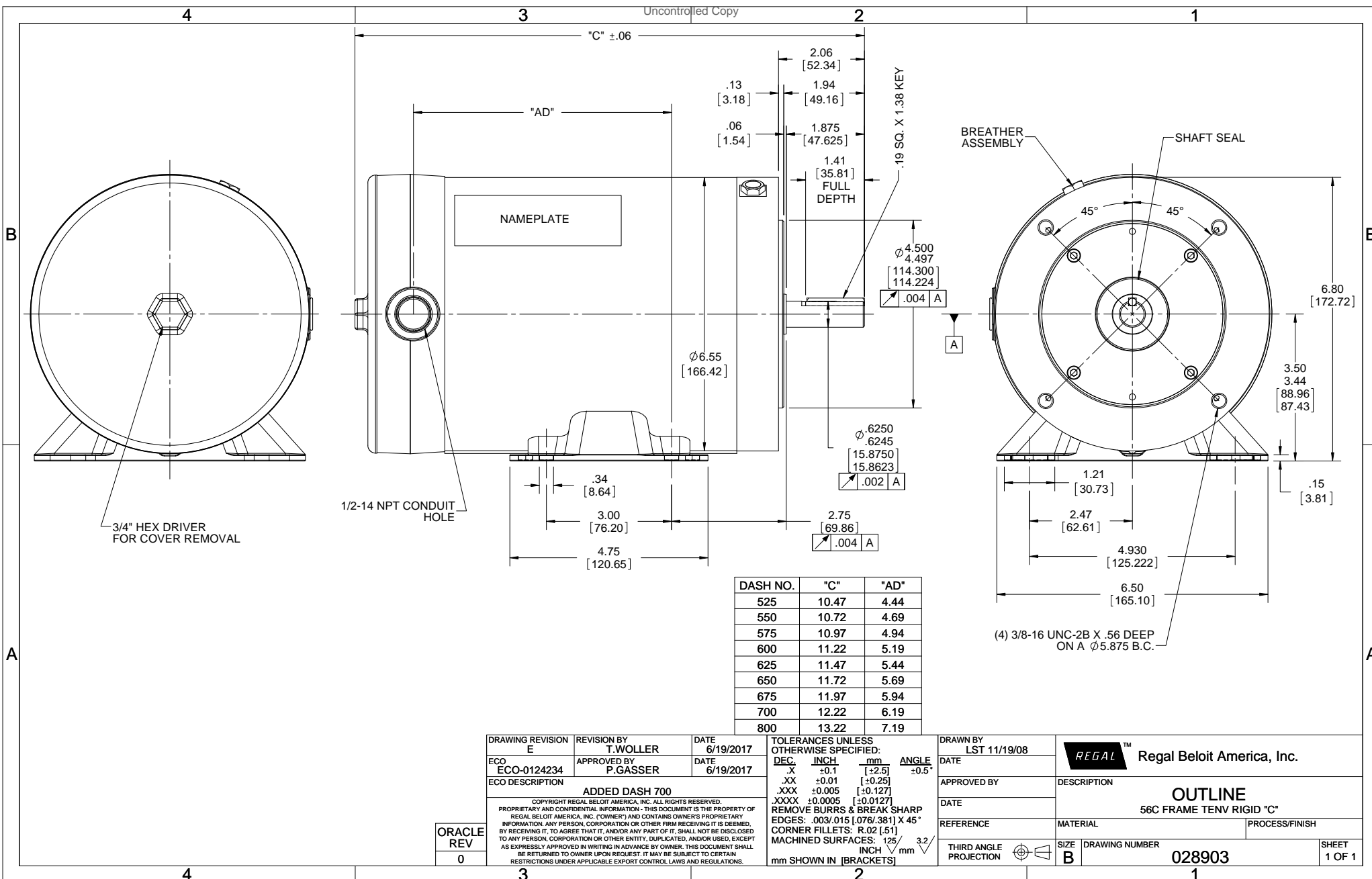


Nameplate Specifications

Output HP	1 Hp	Output KW	0.75 kW
Frequency	60 Hz	Voltage	230/460 V
Current	2.6/1.3 A	Speed	3450 rpm
Service Factor	1.15	Phase	3
Efficiency	85.5 %	Duty	Continuous
Insulation Class	F	Design Code	B
KVA Code	L	Frame	56HC
Enclosure	Totally Enclosed Non Ventilated	Overload Protector	No
Ambient Temperature	40 °C	Drive End Bearing Size	6205
Opp Drive End Bearing Size	6205	UL	Recognized
CSA	Y	CE	Y
IP Code	56		

Technical Specifications

Electrical Type	Squirrel Cage Inverter Rated	Starting Method	Line Or Inverter
Poles	2	Rotation	Reversible
Mounting	Rigid base	Motor Orientation	HORIZONTAL
Drive End Bearing	BALL	Opp Drive End Bearing	BALL
Frame Material	Stainless Steel	Shaft Type	NEMA 56
Overall Length	13.22 in	Frame Length	7.00 in
Shaft Diameter	0.625 in	Shaft Extension	1.88 in
Assembly/Box Mounting	F1 ONLY		
Outline Drawing	028903-700	Connection Diagram	005010.01



DASH NO.	"C"	"AD"
525	10.47	4.44
550	10.72	4.69
575	10.97	4.94
600	11.22	5.19
625	11.47	5.44
650	11.72	5.69
675	11.97	5.94
700	12.22	6.19
800	13.22	7.19

DRAWING REVISION E	REVISION BY T. WOLLER	DATE 6/19/2017	TOLERANCES UNLESS OTHERWISE SPECIFIED:		DRAWN BY LST 11/19/08	Regal Beloit America, Inc.
ECO ECO-0124234	APPROVED BY P. GASSER	DATE 6/19/2017	DEC.	INCH	mm	
ECO DESCRIPTION ADDED DASH 700			.X	± 0.1	[± 2.5]	$\pm 0.5^\circ$
ORACLE REV 0			.XX	± 0.01	[± 0.25]	
			.XXX	± 0.005	[± 0.127]	
			.XXXX	± 0.0005	[± 0.0127]	
			REMOVE BURRS & BREAK SHARP EDGES: .003/.015 [0.076/3.81] X 45° CORNER FILLETS: R.02 [51] MACHINED SURFACES: 125/3.2 INCH/mm SHOWN IN [BRACKETS]			
COPYRIGHT REGAL BELOIT AMERICA, INC. ALL RIGHTS RESERVED. PROPRIETARY AND CONFIDENTIAL INFORMATION - THIS DOCUMENT IS THE PROPERTY OF REGAL BELOIT AMERICA, INC. (OWNER) AND CONTAINS OWNER'S PROPRIETARY INFORMATION. ANY PERSON, CORPORATION OR OTHER FIRM RECEIVING IT IS DEEMED, BY RECEIVING IT, TO AGREE THAT IT, AND/OR ANY PART OF IT, SHALL NOT BE DISCLOSED TO ANY PERSON, CORPORATION OR OTHER ENTITY, DUPLICATED, AND/OR USED, EXCEPT AS EXPRESSLY APPROVED IN WRITING IN ADVANCE BY OWNER. THIS DOCUMENT SHALL BE RETURNED TO OWNER UPON REQUEST. IT MAY BE SUBJECT TO CERTAIN RESTRICTIONS UNDER APPLICABLE EXPORT CONTROL LAWS AND REGULATIONS.			DATE	APPROVED BY	DESCRIPTION OUTLINE 56C FRAME TENV RIGID "C"	PROCESS/FINISH
			REFERENCE	MATERIAL	DRAWING NUMBER 028903	SHEET 1 OF 1
			THIRD ANGLE PROJECTION	SIZE B		

005010-01

VIEW FROM OUTSIDE OF MOTOR AT SWITCH END.



VOLTAGE	L1	L2	L3	JOIN & INSULATE
HIGH	T1	T2	T3	(T4,T7) (T5,T8) (T6,T9)
LOW	T1,T7	T2,T8	T3,T9	T4,T5,T6

				TOLERANCES UNLESS SPECIFIED		Regal Beloit America, Inc.		DRAWN RDW 04/12/02				
				DEC.	INCHES			CHK				
				.X	±.1			APPD				
				.XX	±.01			SCALE 1=1				
				.XXX	±.005	TITLE		REF FIG.2-51				
A	UPDATED TO REGAL LOGO			SAJ	06/26/15	AJY	.XXXX	±.0005	MAT'L.	DECAL - 004014	FMF	
NO.	REVISION			BY & DATE	CHK	ANG	±1/2"	FINISH			PREV	
THIS DRAWING IN DESIGN AND DETAIL IS OUR PROPERTY AND MUST NOT BE USED EXCEPT IN CONNECTION WITH OUR WORK ALL RIGHTS OF DESIGN AND INVENTION ARE RESERVED THIS IS AN ELECTRONICALLY GENERATED DOCUMENT - DO NOT SCALE THIS PRINT				RFP	04/12/02		CAD FILE	00501001		SIZE	DRAWING NO.	
				DIST	BRF-NLV				A	005010-01		REV.



P.O. BOX 8003
WAUSAU, WI 54401-8003
PH. 715-675-3311

DATA VOLTS: 460

CERTIFICATION DATA SHEET

CONN. DIAGRAM: 005010.01
OUTLINE: 028903-700
WINDING: T632293

CAT #: 117273.00

NR 3

TYPICAL MOTOR PERFORMANCE DATA

HP	KW	SYNC RPM	FL RPM	FRAME	ENCLOSURE	TYPE	KVA CODE	DESIGN										
1	0.75	3600	3503	56C	TENV	NA	L	B										
PH	HZ	VOLTS	AMPS	START TYPE	DUTY	INSL	S.F.	AMB	ELEV.									
3	60/50	230/460#190/380	2.55/1.382.4/1.2	LINE OR INVERTER	CONT	F	1.15	40	3300									
F.L. EFF	F.L. PF	84.5	86.6	3/4 LD EFF	83.0	1/2 LD EFF	79.5	GTD EFF	73.8	0.0	ELECT. TYPE							
											SO CAGE INVERTED							
F.L. TORQUE	LR AMPS @ 460 V	12.2	1.253	LB-FT	326%	1.783	LB-FT	B.D. TORQUE	464%	98	F.L. RISE (°C)							
384	LB-FT																	
PRESSURE @ 3	POWER	ROTOR WK²	MAX. LOAD WK²	SAFE STALL TIME	STARTS/HOUR	MOTOR WGT	999	DBA	1008	DBA	0.07	LB-FT²	0	LB-FT²	10	SEC.	0	LB.

*** SUPPLEMENTAL INFORMATION ***

DE BRACKET TYPE	ODE BRACKET TYPE	MOUNT TYPE	MOTOR ORIENTATION	SEVERE DUTY	HAZARDOUS LOCATION	DRIIP COVER	SCREENS	PAINT
C-FACE	STANDARD	RIGID	HORIZONTAL	NO	NONE	NO	NONE	NO PAINT
BEARINGS DE	ODE	GREASE	SHAFT TYPE	SPECIAL DE	SPECIAL ODE	SHAFT	MATERIAL	FRAME MATERIAL
BALL	BALL	POLYREX EM	STANDARD 56	NONE	NONE	303 STAINLESS	(C-501)	STAINLESS STEEL
6205	6205							
THERMOSTATS	PROTECTORS	WDG RTD's	BRG RTD's	THERMISTORS	CONTROL	SPACE HEATERS		
NONE	NOT	NONE	NONE	NONE	FALSE	NA		
R1 (ohms/ph)	R2 (ohms/ph)	X1 (ohms/ph)	X2 (ohms/ph)	Xm (ohms/ph)	VIBRATION (in/sec)	FLOAT		
0	0	0	0	0	0.080	ODE		

* N O T E S *		INVERTER TORQUE: CONSTANT 6:1	
		INV. HP SPEED RANGE: NONE	
		ENCODER: NONE	
		BRAKE: NONE	
		FT-LB: NA	
		VOLTAGE: NONE	
		UL: Y-(LEESON UL REC)	

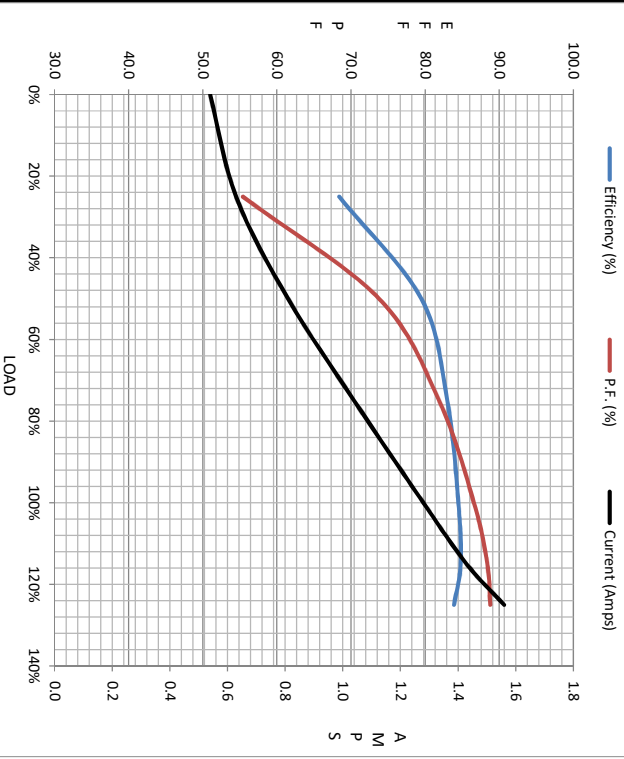
DATE: 1/23/2018	UL: Y-(LEESON UL REC)	FT-LB: NA	VOLTAGE: NONE	UL: Y-(LEESON UL REC)	BRAKE: NONE	FT-LB: NA	VOLTAGE: NONE	UL: Y-(LEESON UL REC)
-----------------	-----------------------	-----------	---------------	-----------------------	-------------	-----------	---------------	-----------------------



Motor Load Data						LR	
Load	0%	25%	50%	75%	100%	115%	125%
Current (Amps)	0.54	0.63	0.81	1.04	1.28	1.43	1.56
Torque (ft-lb)	0.00	96.0	192	288	384	442	480
RPWM	3600	3571	3550	3528	3503	3486	3478
Efficiency (%)		68.4	79.5	83.0	84.5	84.8	83.9
P.F. (%)	30.4	55.4	73.8	81.9	86.6	88.4	88.8
						0.0	

Motor Speed Data

	LR	Pull-Up	BD	Rated	Idle	Information Block		
Speed (RPM)	0	528	2557	3503	3600	HP	1.0	
Current (Amps)	12.2	11.3	7.5	1.28	0.54	Sync. RPM	3600	
Torque (ft-lb)	1,253	1,252	1,733	384	0.00	Frame	140	
						Enclosure	TENV	
						Construction	NA	
						Voltage	230/460#190/380	V
						Frequency	60	Hz
						Design	A	
						LR Code letter	L	
						Service Factor	1.0	
						Temp Rise @ FL	98	°C
						Duty	CONT	
						Ambient	40	°C
						Elevation	1,000	feet
						Rotor/Shaft wkt	0.07	LB-Ft²
						Ref Wdg	T632233	NR
						Sound Pressure @ 1M	999	dB(A)
						VFD Rating	CONSTANT 6:1	
						Outline Dwg	028903-700	
						Conn. Diag	005010.01	
						Additional Specifications:		



EQUIV CKT (OHMS / PHASE)			
R1	R2	X1	X2
0.0000	0.0000	0.0000	0.0000
			Xm
			0.0000

