

# PRODUCT INFORMATION PACKET



Model No: 118015.00  
Catalog No: 118015.00  
Explosion Proof Motor, 0.33 HP, 90 V, 1750 RPM, S56C Frame, TENV



Regal and LEESON are trademarks of Regal Rexnord Corporation or one of its affiliated companies.  
©2025 Regal Rexnord Corporation, All Rights Reserved. MC017097E





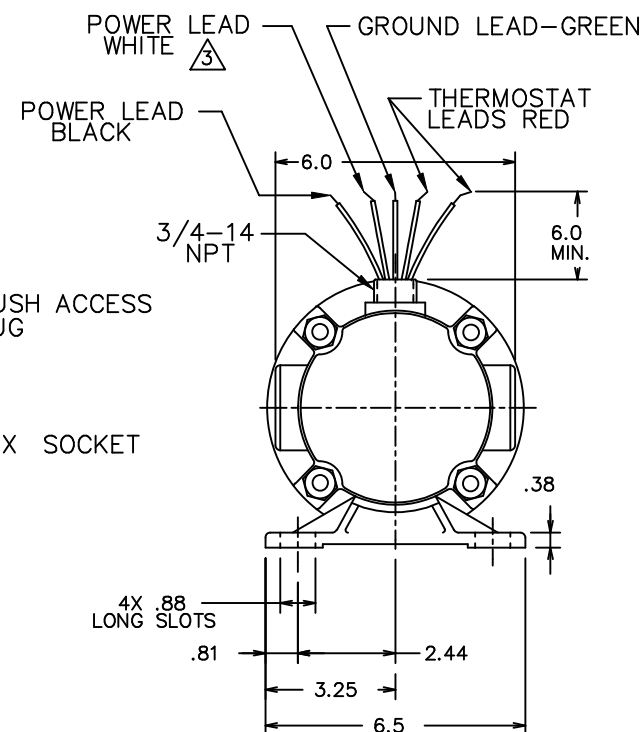
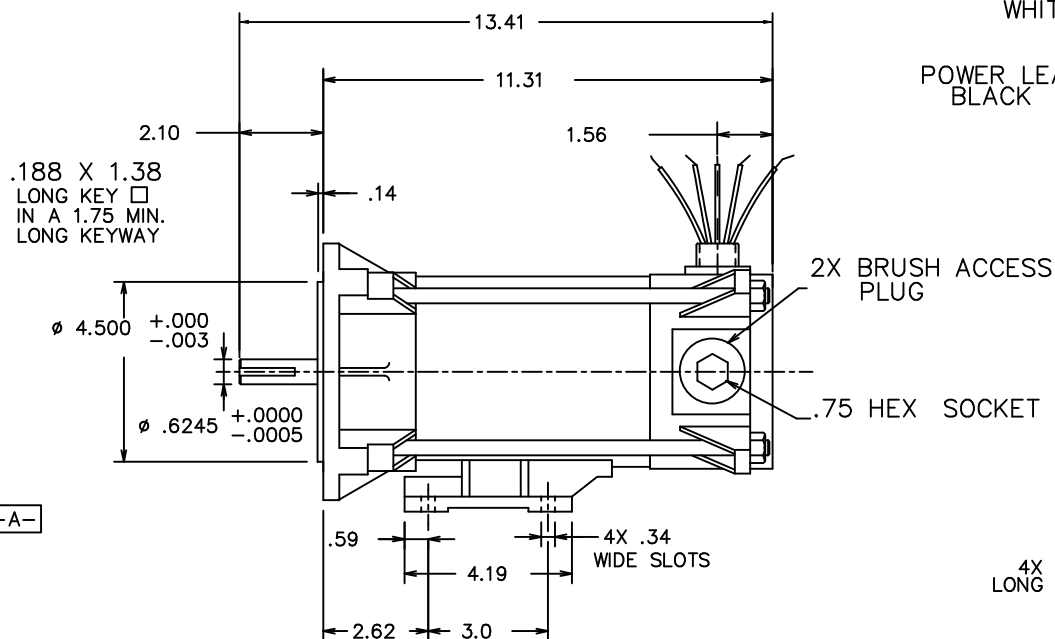
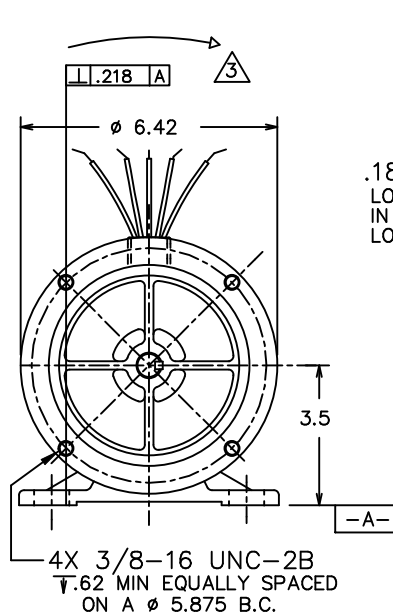
### Nameplate Specifications

Output HP	0.33 Hp	Output KW	0.25 kW
Voltage	90 V	Speed	1750 rpm
Service Factor	1.0	Frame	S56C
Enclosure	Totally Enclosed Non Ventilating	Thermal Protection	Automatic
Efficiency	78.9 %	Ambient Temperature	40 °C
Current	3.5 A	Duty	Continuous
Insulation Class	H	Drive End Bearing Size	6203
Opp Drive End Bearing Size	6203	UL	Recognized
CSA	Y	CE	N

### Technical Specifications

Rotation	Reversible	Mounting	Rigid C base
Overall Length	13.41 in	Shaft Diameter	0.625 in
Shaft Extension	2.1 in	Torque	12.0 LB-IN
Outline Drawing	034446		

This is an uncontrolled document once printed or downloaded and is subject to change without notice. Date Created:04/08/2025



VOLTAGE	90 VDC
HORSEPOWER	1/3
RPM	1750
AMPERES	3.5
CONTINUOUS DUTY	
PERMANENT MAGNET FIELD	
CLASS H INSULATION	
BALL BEARINGS	

## NOTE:

1. ALL DIMENSIONS REFERENCE  
UNLESS TOLERANCED.

2. MOTOR PAINTED BLUE SATIN.

3. POSITIVE TO WHITE WILL CAUSE  
CW ROTATION.

4. UL LISTED(E75276)  
AND CSA CERTIFIED(LR 701080)

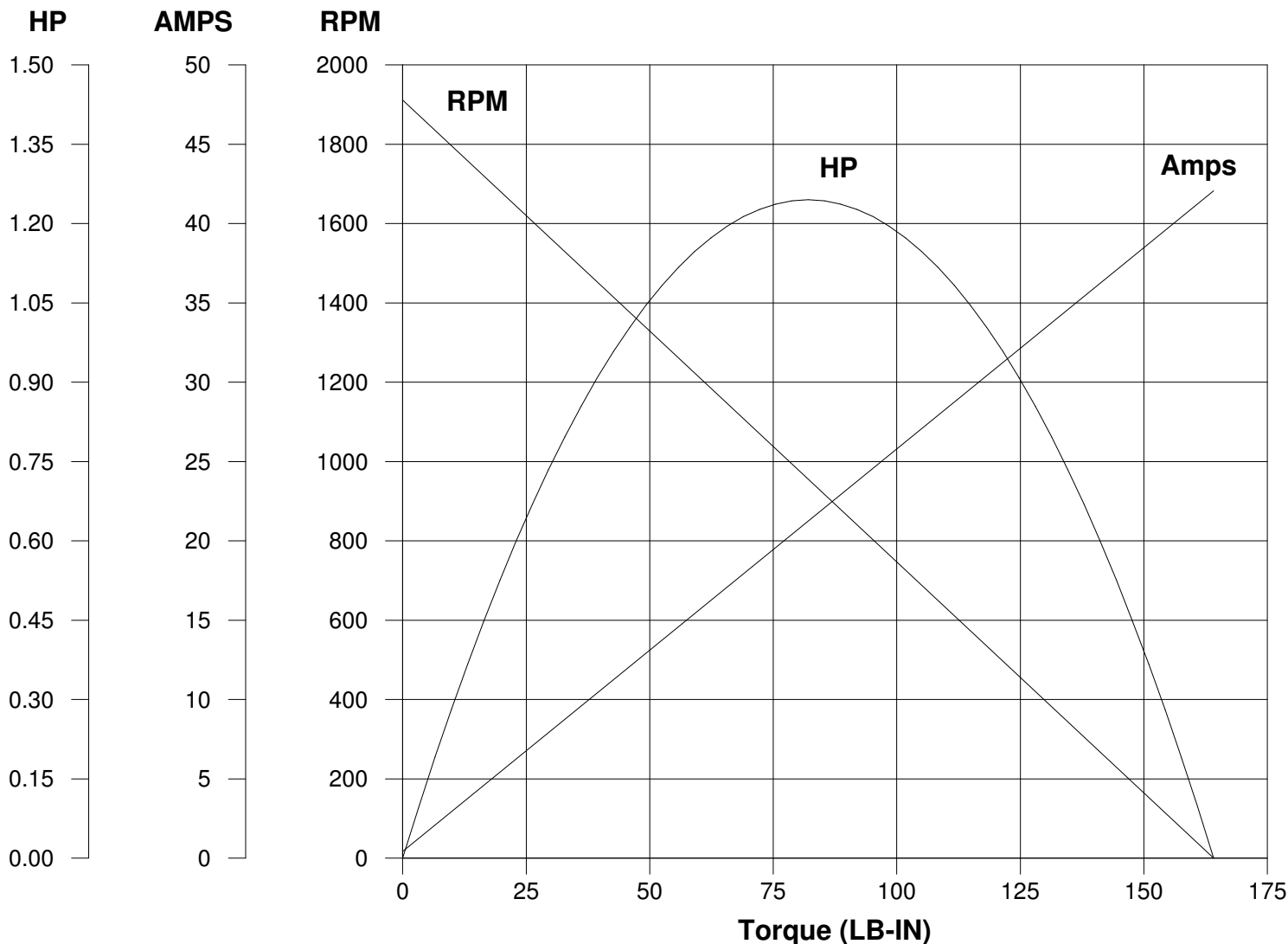
				TOLERANCES UNLESS OTHERWISE SPECIFIED		LEESON ELECTRIC CORPORATION					
				DECIMALS							
				.00	± .01	DRAWN ADS 06/12/95	TITLE OUTLINE 56 FRAME				
				.000	± .005	CH'K'D.	EXPLOSION PROOF DC MOTOR				
01	OVERALL LENGTH WAS 14.97		WMM	10/7/97	.0000	± .0005	APPR.	MAT'L.			
NO.	REVISION		BY	DATE	FRACTIONS	± 1/64	SCALE	NTS			
THIS DRAWING IN DESIGN AND DETAIL IS OUR PROPERTY AND MUST NOT BE USED EXCEPT IN CONNECTION WITH OUR WORK ALL RIGHTS OF DESIGN AND INVENTION ARE RESERVED					ANGLES	± 1/2°	REF.	PS 1435	FINISH	SIZE	DRAWING NO.
					INCH/MM		FMF	C6D17EK1A		B	034446

# LEESON ELECTRIC CORPORATION

## TYPICAL PERFORMANCE CURVE

### FOR

### DIRECT CURRENT PERMANENT MAGNET MOTOR

Model No. C6D17EK1Catalog No. 118015.00HP 0.330RPM 1750DC Volts 90.0N.P. FLA 3.50F.F. 1.40Encl TENVType DES.F. 1.00Max. Amb. 40.0 Deg CInsul. HFrame S56CDuty Cont

Ra 1.7600 Ohms  
 La 6.600 mHenrys  
 Ja 5.000 LB-IN<sup>2</sup>  
 Ke 46.60 V/KRPM

Kt 3.939 LB-IN/AMP  
 Imax 71.0 AMPS Allowed  
 FL Torque 12.00 LB-IN  
 FL EFF 78.90 %

Winding W- PS5-1Prepared by V. BoehlenDate 05-02-2005