

PRODUCT INFORMATION PACKET



Model No: M145K17FC13N

Catalog No: 120855.00

..2HP..1725RPM.145.TEFC.230V.1PH.60HZ.CONT.40C.1.15SF.C FACE.M145K17FC13N.....AG - FARM
DUTY/GENERAL PURPOSE.MANUAL.....

Agricultural



Regal and Leeson are trademarks of Regal Beloit Corporation or one of its affiliated companies.

©2018 Regal Beloit Corporation, All Rights Reserved. MC017097E



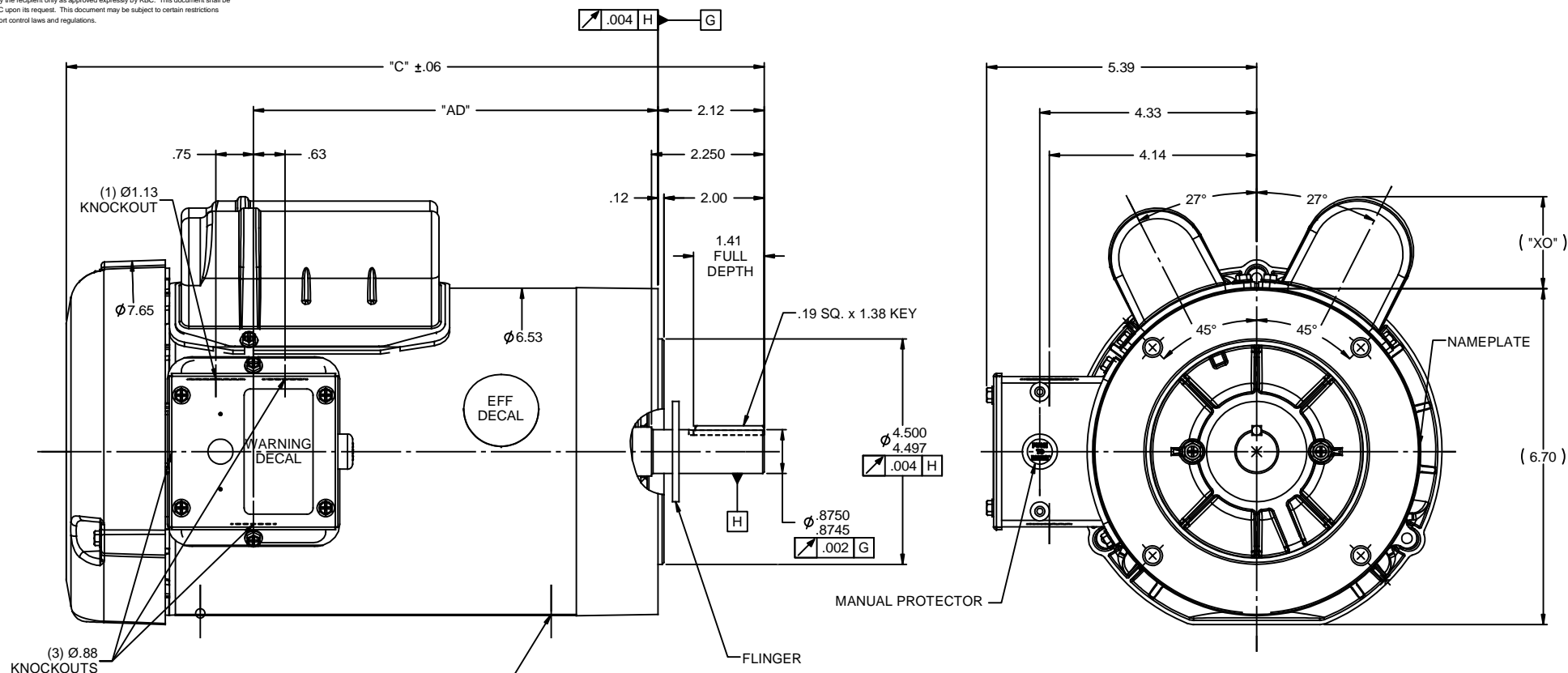


Nameplate Specifications

Output HP	2 Hp	Output KW	1.5 kW
Frequency	60 Hz	Voltage	230 V
Current	9.2 A	Speed	1725 rpm
Service Factor	1.15	Phase	1
Efficiency	82 %	Duty	Continuous
Insulation Class	F	Design Code	L
KVA Code	H	Frame	145TC
Enclosure	Totally Enclosed Fan Cooled	Overload Protector	Manual
Ambient Temperature	40 °C	Drive End Bearing Size	6205
Opp Drive End Bearing Size	6203	UL	Recognized
CSA	Y	CE	N
IP Code	43		

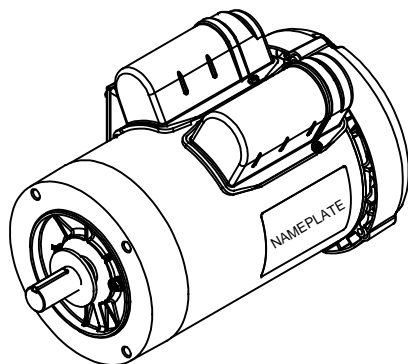
Technical Specifications



Electrical Type	Capacitor Start Capacitor Run	Starting Method	Across The Line
Poles	4	Rotation	Selective Counterclockwise
Mounting	Round	Motor Orientation	HORIZONTAL
Drive End Bearing	BALL	Opp Drive End Bearing	BALL
Frame Material	Rolled Steel	Shaft Type	T
Overall Length	14.18 in	Frame Length	8.25 in
Shaft Diameter	0.875 in	Shaft Extension	2.25 in
Assembly/Box Mounting	F1 ONLY		
Outline Drawing	028919-825C	Connection Diagram	005056.03



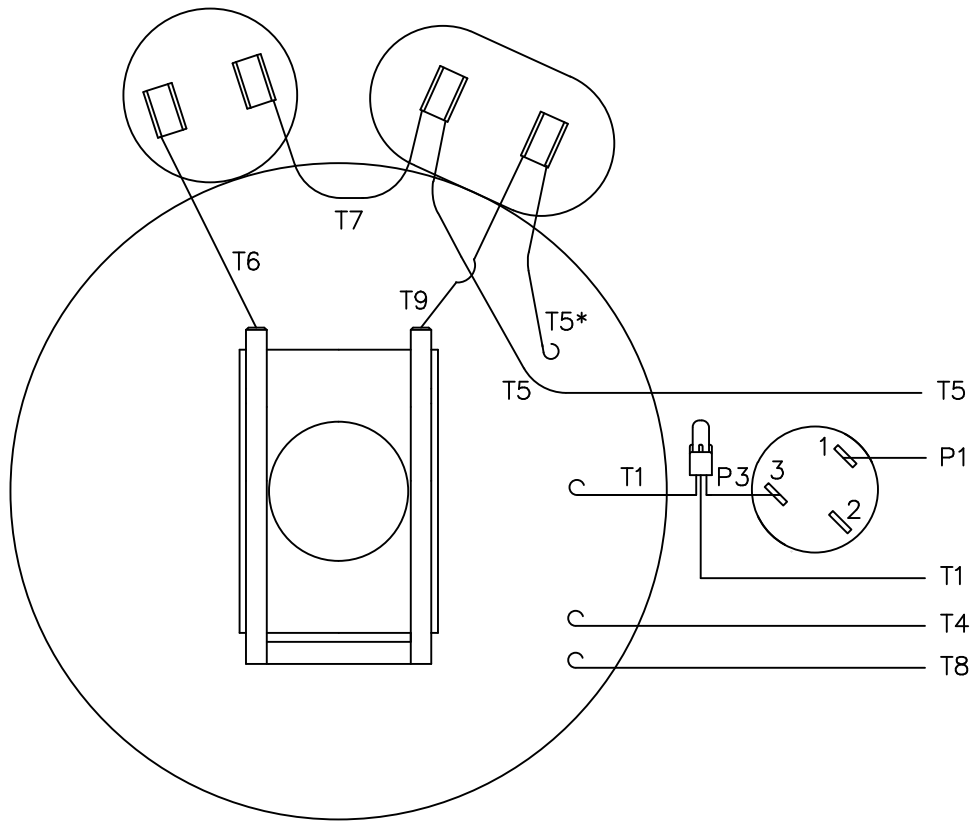
DASH NO.	"C"	"AD"	CAP DASH	"XO"
700	12.93	7.07	A	1.15
750	13.43	7.57	B	1.60
800	13.93	8.07	C	1.82
850	14.43	8.57		
825	14.18	8.32		

SPECIAL FEATURES:
1) GASKETS THROUGHOUT
2) FLINGER ON SHAFT
3) MANUAL PROTECTOR



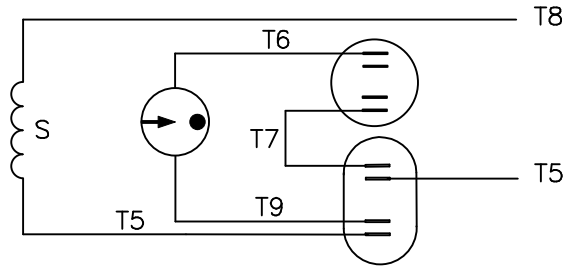
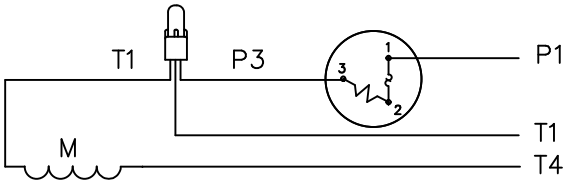
				TOLERANCES (UNLESS SPECIFIED)		 ELECTRIC MOTORS GEARMOTORS AND DRIVES	DRAWN GRB 12/05/08			
				DEC INCHES			CHK DJ 12/05/08			
				X ±.1			APPR DJ 12/05/08			
				XX ±.03			TITLE OUTLINE - H145TC FRAME FARM DUTY MOTOR			
				XXX ±.005						
				XXXX ±.0005		REF OL120855				
				MATL		FMF 120855.00				
NO	REVISION			BY & DATE	CHK ANG ±1/2°	FINISH STANDARD		PAGE 1 OF 1		
THIRD ANGLE PROJECTION 					RFP 12/05/08	PREV		SIZE B	DRAWING NO 028919	REV
					NETWORK FILE NAME					

VIEW FROM OUTSIDE OF MOTOR AT SWITCH END.




* THIS LEAD MAY BE WHITE

LINE LEADS



ROTATION FACING LEAD END	L1	L2	JOIN
C.C.W.	P1	T4,T5	T1,T8
C.W.	P1	T4,T8	T1,T5

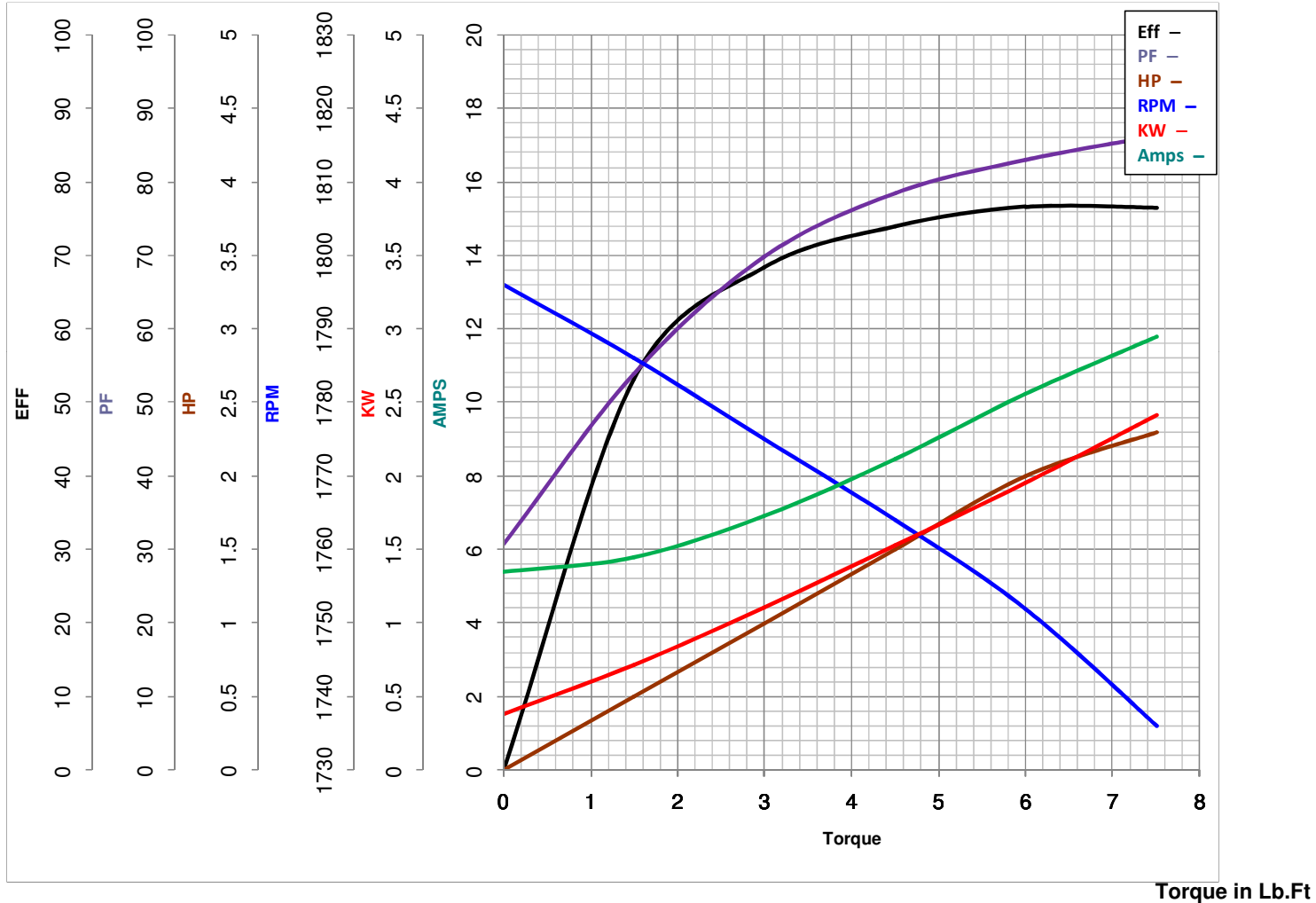
				TOLERANCES UNLESS SPECIFIED			ELECTRIC MOTORS GEARMOTORS AND DRIVES		DRAWN WLW 08/30/76		
				DEC.	INCHES				CHK WRK 09/24/76		
				.X	±.1				APPD		
08	ALTERNATE T5 LEAD MARKING WAS RED	RLW 8/6/02		.XX	±.01	TITLE EXTERNAL WIRING DIAGRAM TYPE "K" W/ PROTECTOR			SCALE 1=1		
07	ADDED ALTERNATE T5 LEAD MARKING	RLW 5/31/02	KH	.XXX	±.005				REF		
06	REDRAWN TO CAD	DBT 5/31/02		.XXXX	±.0005	MAT'L. DECAL – 004015			FMF 6K17FB4		
NO.	REVISION	BY & DATE	CHK	ANG	±1/2°	FINISH			PREV		
THIS DRAWING IN DESIGN AND DETAIL IS OUR PROPERTY AND MUST NOT BE USED EXCEPT IN CONNECTION WITH OUR WORK ALL RIGHTS OF DESIGN AND INVENTION ARE RESERVED THIS IS AN ELECTRONICALLY GENERATED DOCUMENT – DO NOT SCALE THIS PRINT			RFP		CAD FILE 00505603			SIZE	DRAWING NO.		REV.
			DIST BRF–NLV					A	005056–03		08



LEESON ELECTRIC CORPORATION

TYPICAL PERFORMANCE CURVE for AC MOTOR

Model No 120855.00Catalog No 120855.00Curve at 230
60
2Volts
HZ
HPHP 2.00

VOLTS 230PHASE 1HZ 60RPM 1725

FL TORQUE 6 Lb.Ft
 BD TORQUE 16.3 Lb.Ft
 LR TORQUE 16.8 Lb.Ft

FL AMPS 9.2
 PU TORQUE 13.2 Lb.Ft
 LR AMPS 64.54

WINDING K634271-2

Date 3/27/2018