

PRODUCT INFORMATION PACKET



Model No: P145K17FB22L

Catalog No: 120867.00

..2HP..1740RPM.145.TEFC.115/208-230V.1PH.60HZ.CONT.40C.1.0SF.RIGID.P145K17FB22L.....GENERAL PURPOSE.MANUAL.....

Totally Enclosed Fan Cooled (TEFC)



Regal and Leeson are trademarks of Regal Beloit Corporation or one of its affiliated companies.

©2018 Regal Beloit Corporation, All Rights Reserved. MC017097E





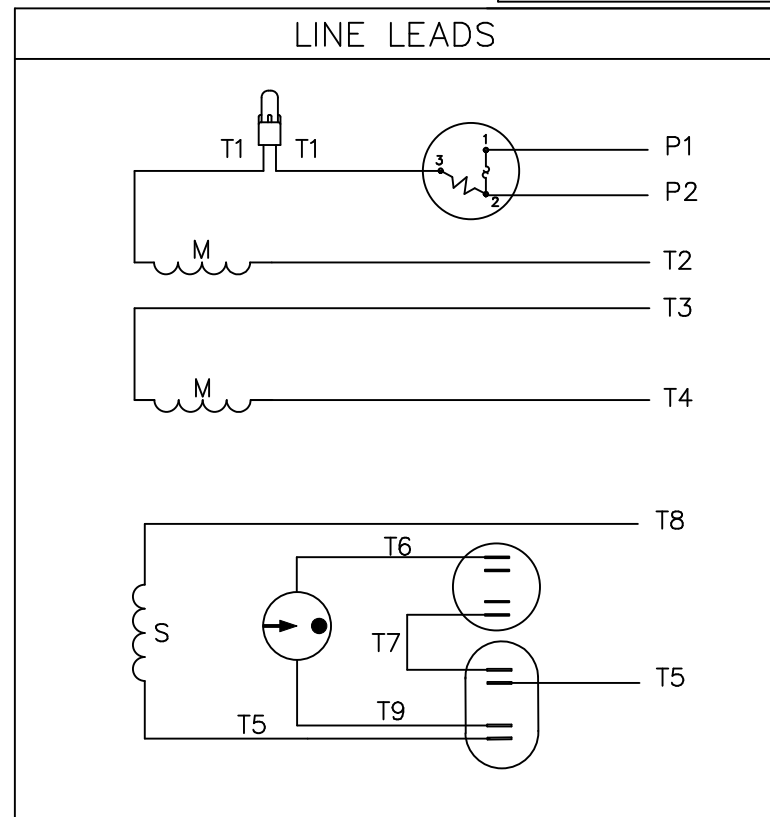
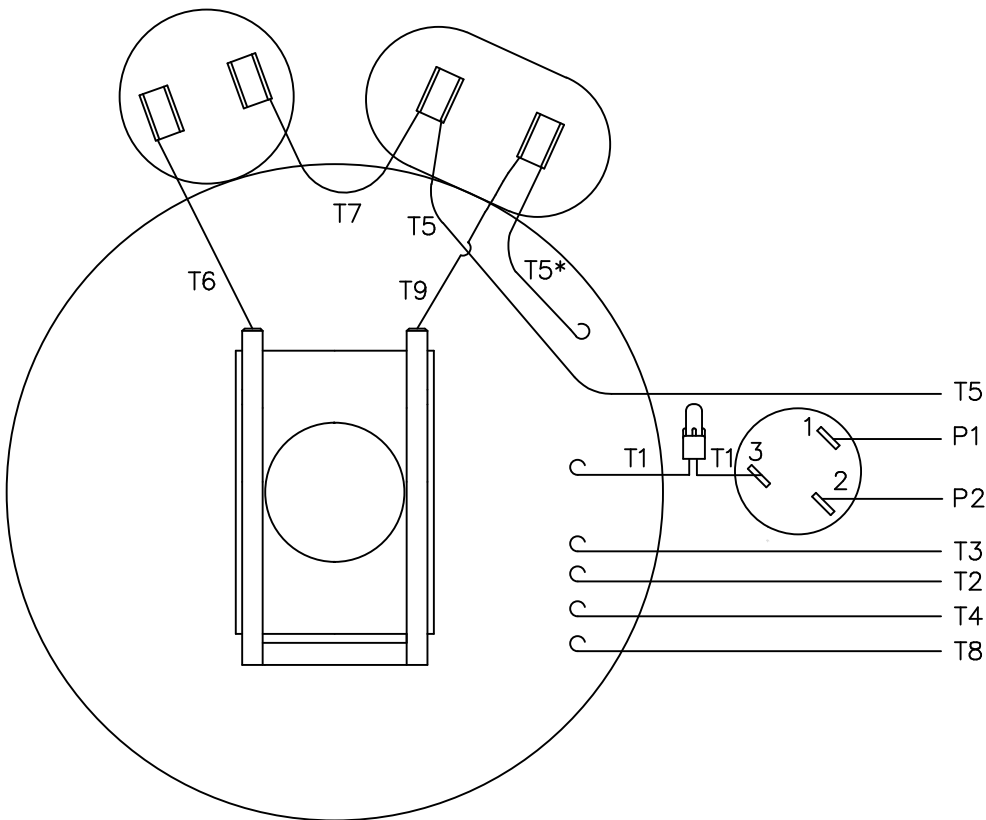
Nameplate Specifications

Output HP	2 Hp	Output KW	1.5 kW
Frequency	60 Hz	Voltage	115/208-230 V
Current	18.4/9.2 A	Speed	1740 rpm
Service Factor	1	Phase	1
Efficiency	82 %	Duty	Continuous
Insulation Class	B	Design Code	L
KVA Code	H	Frame	145T
Enclosure	Totally Enclosed Fan Cooled	Overload Protector	Manual
Ambient Temperature	40 °C	Drive End Bearing Size	6205
Opp Drive End Bearing Size	6203	UL	Recognized (Not Protector)
CSA	Y	CE	N
IP Code	43		

Technical Specifications

Electrical Type	Capacitor Start Capacitor Run	Starting Method	Across The Line
Poles	4	Rotation	Selective Counterclockwise
Mounting	Rigid base	Motor Orientation	HORIZONTAL
Drive End Bearing	BALL	Opp Drive End Bearing	BALL
Frame Material	Rolled Steel	Shaft Type	T
Overall Length	13.93 in	Frame Length	8.00 in
Shaft Diameter	0.875 in	Shaft Extension	2.25 in
Assembly/Box Mounting	F1 ONLY		
Outline Drawing	028764-800B	Connection Diagram	005053.02

VIEW FROM OUTSIDE OF MOTOR AT SWITCH END.



	ROTATION FACING LEAD END	L1	L2	JOIN	INSULATE SEPARATELY
HIGH VOLT	C.C.W.	P1	T4 T5	T2,T3 T8	P2
	C.W.	P1	T4 T8	T2,T3 T5	P2
LOW VOLT	C.C.W.	P1	T2,T4 T5	P2,T3 T8	-----
	C.W.	P1	T2,T4 T8	P2,T3 T5	-----

* THIS LEAD MAY BE WHITE

		TOLERANCES UNLESS SPECIFIED	
		DEC.	INCHES
		.X	±.1
		.XX	±.01
04	ADDED "*" TO T5	RLW 7/22/02	.XXX ±.005
03	REDRAWN ON CAD	DBT 05/27/97	.XXXX ±.0005
NO.	REVISION	BY & DATE	CHK ANG ±1/2"

REGAL-BELOIT *Motor Technologies Group*

DRAWN ADH 06/16/76	
CHK WRK 06/30/76	
APPD	
SCALE 1=1	
REF	
TITLE EXTERNAL WIRING DIAGRAM TYPE "K" W/PROTECTOR	
MAT'L. DECAL 004011	
FINISH	
FMP 6K17FB8A	PREV
RFP CAD FILE 00505302	SIZE DRAWING NO. A 005053-02
DIST	REV. 04



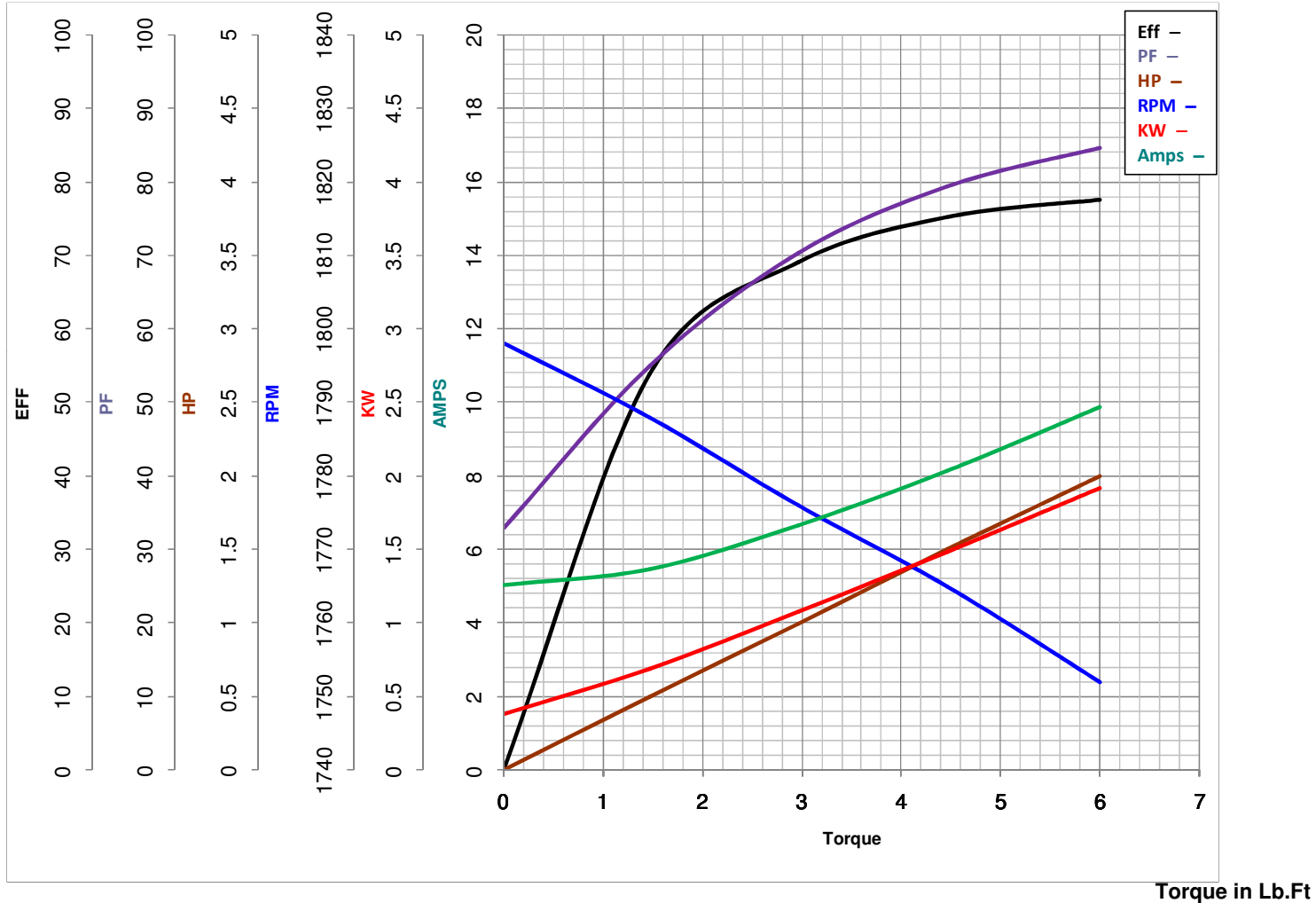
LEESON ELECTRIC CORPORATION
TYPICAL PERFORMANCE CURVE for AC MOTOR

Model No 120867.00

Catalog No 120867.00

Curve at 230 Volts HP 2.00 PHASE 1
60 HZ
2 HP VOLTS 115/208-230

HZ 60 RPM 1740



FL TORQUE	<u>5.99</u>	Lb.Ft	FL AMPS	<u>18.4/9.2</u>	
BD TORQUE	<u>15.4</u>	Lb.Ft	PU TORQUE	<u>8.9</u>	Lb.Ft
LR TORQUE	<u>16.2</u>	Lb.Ft	LR AMPS	<u>66.5</u>	
WINDING	K634271-3		Date	<u>3/27/2018</u>	