

# PRODUCT INFORMATION PACKET



Model No: C145C34FK2H

Catalog No: 121008.00

2HP..3450RPM.145.TEFC.115/208-230V.1PH.60HZ.CONT.NOT.40C.1.0SF.RIGID C.GENERAL  
PURPOSE.C145C34FK2H

Totally Enclosed Fan Cooled (TEFC)



Regal and Leeson are trademarks of Regal Beloit Corporation or one of its affiliated companies.

©2018 Regal Beloit Corporation, All Rights Reserved. MC017097E





### Nameplate Specifications

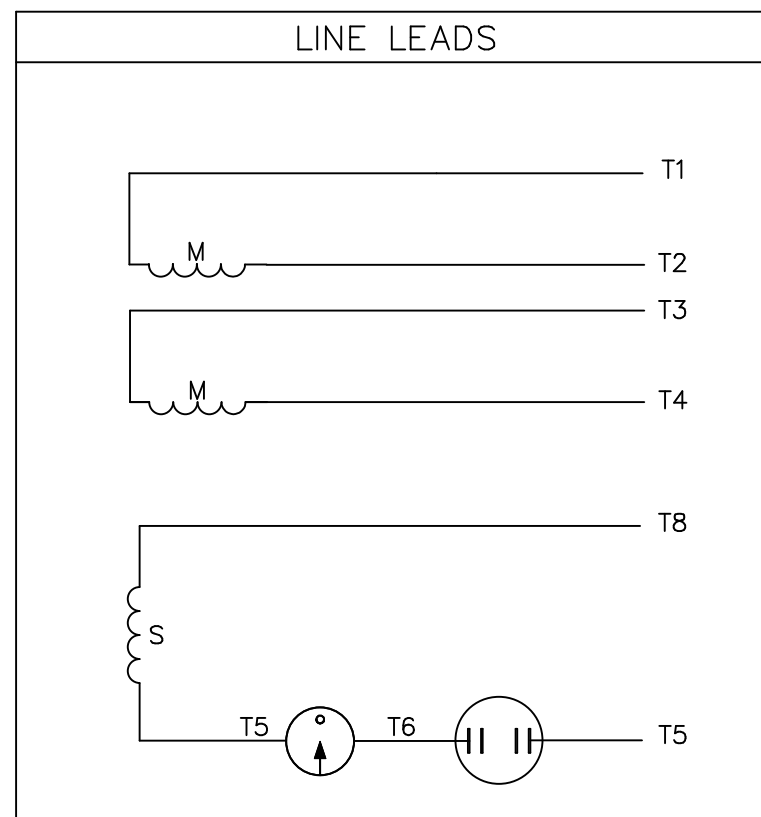
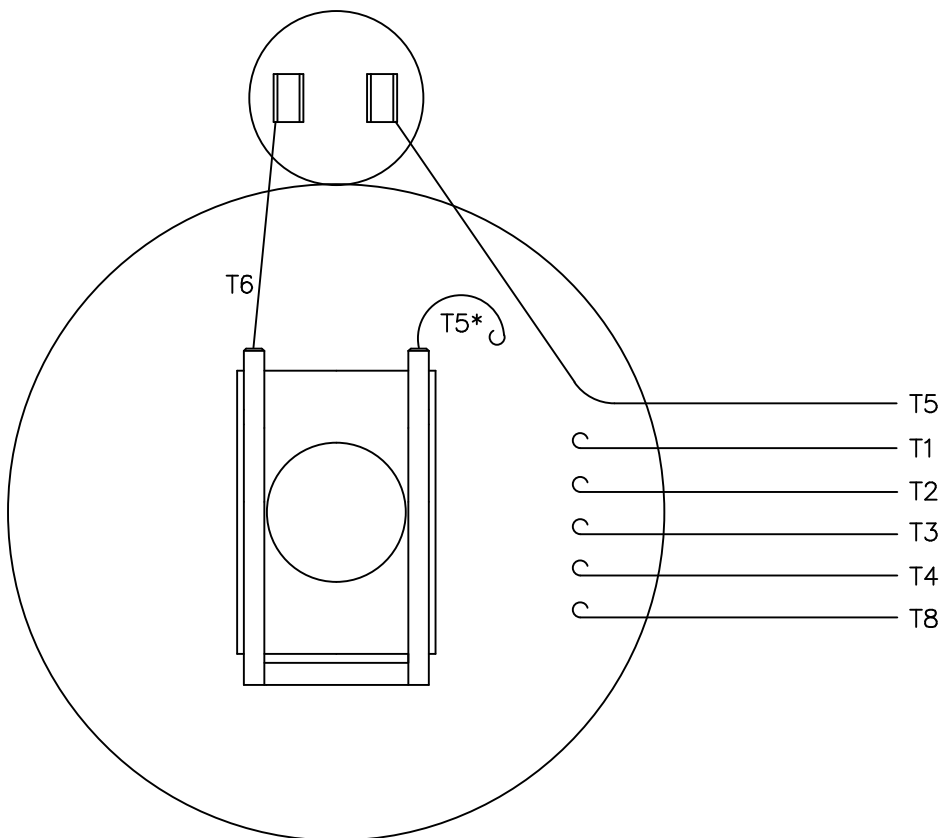
Output HP	2 Hp	Output KW	1.5 kW
Frequency	60 Hz	Voltage	115/208-230 V
Current	20.0/11.4-10.0 A	Speed	3450 rpm
Service Factor	1	Phase	1
Efficiency	73 %	Duty	Continuous
Insulation Class	F	Design Code	L
KVA Code	J	Frame	145TC
Enclosure	Totally Enclosed Fan Cooled	Overload Protector	No
Ambient Temperature	40 °C	Drive End Bearing Size	6205
Opp Drive End Bearing Size	6203	UL	Recognized
CSA	Y	CE	N
IP Code	43		

### Technical Specifications

Electrical Type	Capacitor Start Induction Run	Starting Method	Across The Line
Poles	2	Rotation	Selective Counterclockwise
Mounting	Rigid base	Motor Orientation	HORIZONTAL
Drive End Bearing	BALL	Opp Drive End Bearing	BALL
Frame Material	Rolled Steel	Shaft Type	T
Overall Length	13.93 in	Frame Length	8.00 in
Shaft Diameter	0.875 in	Shaft Extension	2.25 in
Assembly/Box Mounting	F1 ONLY		
Outline Drawing	028897-800B	Connection Diagram	005062.01



VIEW FROM OUTSIDE OF MOTOR AT SWITCH END.



	ROTATION FACING LEAD END	L1	L2	JOIN
HIGH VOLT	C.C.W.	T1	T4 T5	T2, T3 T8
	C.W.	T1	T4 T8	T2, T3 T5
LOW VOLT	C.C.W.	T1, T3 T8	T2, T4 T5	---
	C.W.	T1, T3 T5	T2, T4 T8	---

\* THIS LEAD MAY BE WHITE

				TOLERANCES UNLESS SPECIFIED		LEESON	ELECTRIC MOTORS GEARMOTORS AND DRIVES	DRAWN JRW 12/05/74			
				DEC.	INCHES			CHK	APPD	T.E.M.	
				.X	±.1			SCALE	1=1		
12	ALTERNATE T5 LEAD MARKING WAS RED	RLW 8/6/02		.XX	±.01	TITLE	EXT. WIRING DIAGRAM TYPE "C" W/O PROTECTOR	REF	A-005061		
11	ADDED ALTERNATE T5 LEAD MARKING	RLW 5/31/02	KH	.XXX	±.005			MAT'L.	DECAL - 004012	FMF	
10	UPDATED TO CURRENT STANDARDS	DBT 06/09/97		.XXXX	±.0005			FINISH		PREV	
NO.	REVISION	BY & DATE	CHK	ANG	±1/2"						
THIS DRAWING IN DESIGN AND DETAIL IS OUR PROPERTY AND MUST NOT BE USED EXCEPT IN CONNECTION WITH OUR WORK ALL RIGHTS OF DESIGN AND INVENTION ARE RESERVED THIS IS AN ELECTRONICALLY GENERATED DOCUMENT - DO NOT SCALE THIS PRINT				RFP		CAD FILE	00506201	SIZE	DRAWING NO.	REV.	
				DIST	NLV			A	005062-01	12	



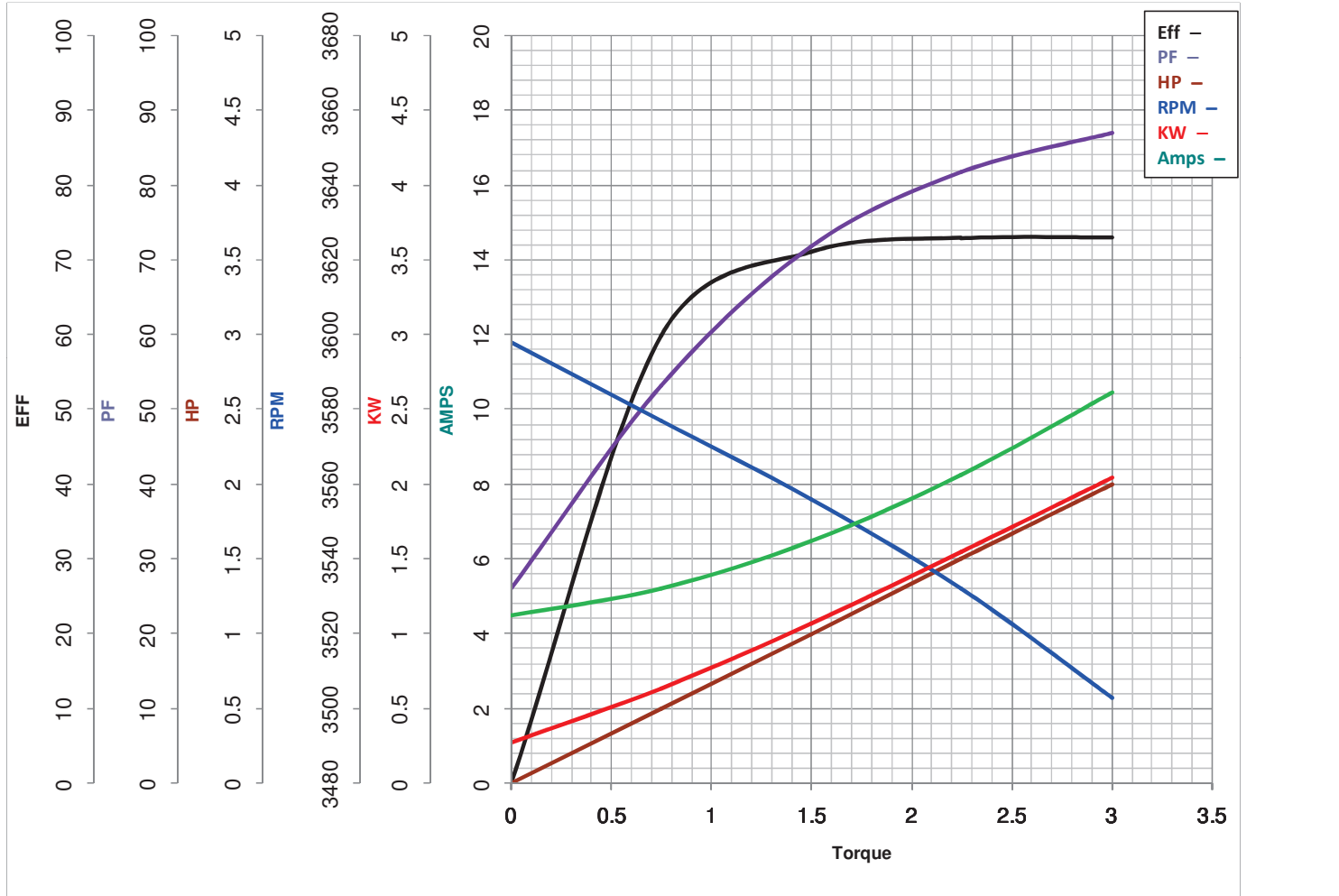
**LEESON ELECTRIC CORPORATION**  
 TYPICAL PERFORMANCE CURVE for AC MOTOR

Model No 121008.00

Catalog No 121008.00

Curve at 230 Volts      HP 2.00      PHASE 1  
60 HZ  
2 HP      VOLTS 115/208-230

HZ 60      RPM 3450



Torque in Lb.Ft

FL TORQUE 3 Lb.Ft  
 BD TORQUE 7.8 Lb.Ft  
 LR TORQUE 7.5 Lb.Ft

FL AMPS 20/11.4-10  
 PU TORQUE 7.0 Lb.Ft  
 LR AMPS 64.4

WINDING C632213-3

Date 4/23/2018

Uncontrolled Copy