

PRODUCT INFORMATION PACKET



Model No: C145T34DB16C

Catalog No: 121516.00

..3HP..3490RPM.145T.DP.230/460V.3PH.60HZ.CONT.40C.1.25SF.RIGID.C145T34DB16C.....WATTSAYER.
AUTOMATIC.....

Open Drip Proof (ODP)



Regal and Leeson are trademarks of Regal Beloit Corporation or one of its affiliated companies.

©2018 Regal Beloit Corporation, All Rights Reserved. MC017097E





Nameplate Specifications

Output HP	3 Hp	Output KW	2.2 kW
Frequency	60 Hz	Voltage	230/460 V
Current	7.2/3.6 A	Speed	3490 rpm
Service Factor	1.25	Phase	3
Efficiency	88.5 %	Duty	Continuous
Insulation Class	F	Design Code	B
KVA Code	K	Frame	145T
Enclosure	Drip Proof	Overload Protector	No
Ambient Temperature	40 °C	Drive End Bearing Size	6205
Opp Drive End Bearing Size	6203	UL	Recognized
CSA	Y	CE	Y
IP Code	22		

Technical Specifications

Electrical Type	Squirrel Cage Induction Run	Starting Method	Across The Line
Poles	2	Rotation	Reversible
Mounting	Rigid base	Motor Orientation	HORIZONTAL
Drive End Bearing	BALL	Opp Drive End Bearing	BALL
Frame Material	Rolled Steel	Shaft Type	T
Overall Length	12.69 in	Frame Length	7.50 in
Shaft Diameter	0.875 in	Shaft Extension	2.25 in
Assembly/Box Mounting	F1 ONLY		
Outline Drawing	028859-775	Connection Diagram	005010.20

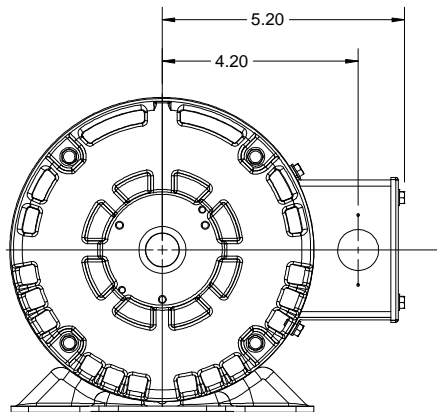
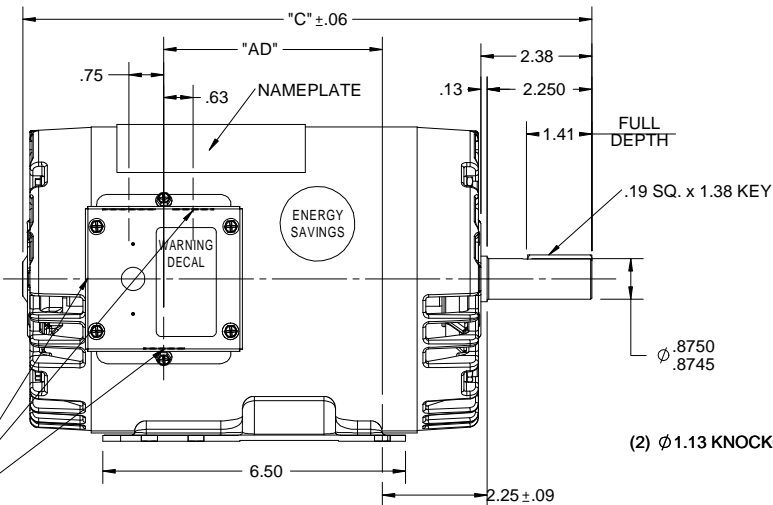
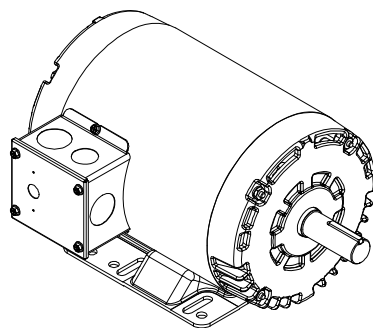
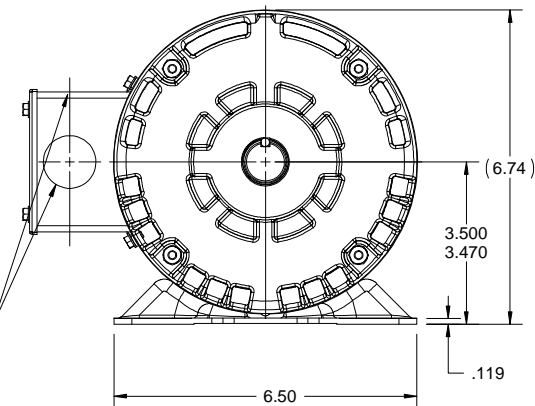
4

3

Uncontrolled Copy

2

1


(3) ϕ .88 KNOCKOUTS(2) ϕ 1.13 KNOCKOUTS

DASH NO.	"C"	"AD"
600	11.19	3.69
650	11.69	4.16
700	12.19	4.69
750	12.69	5.19
775	12.94	5.44
800	13.19	5.69
850	13.69	6.19
900	14.19	6.69

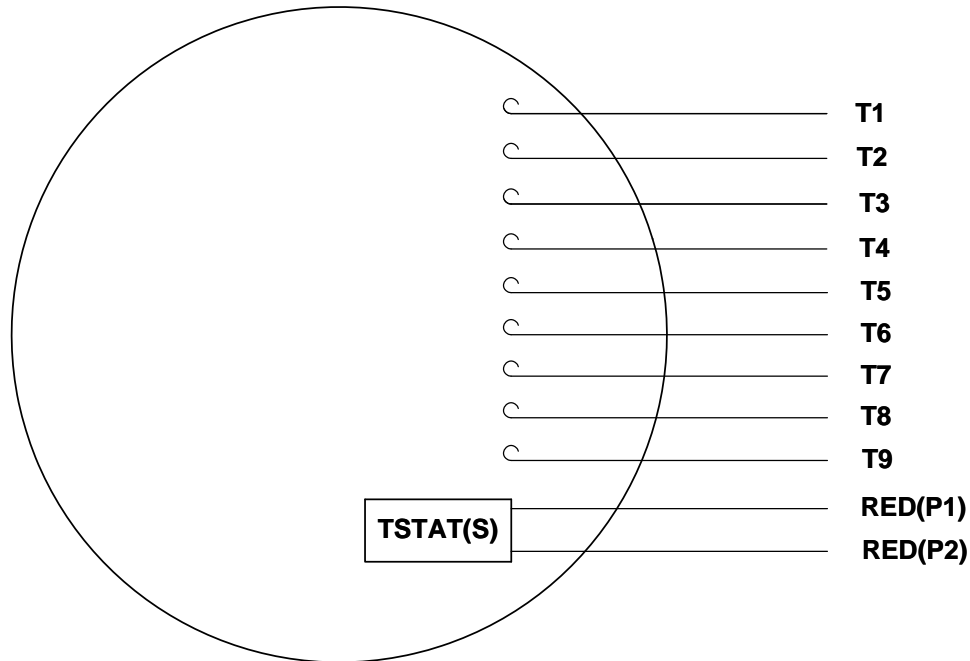
DRAWING REVISION	REVISION BY	DATE
D	UDAY	10/11/17
ECO	APPROVED BY	DATE
ECO-0132698	REETESH	10/11/17
ECO DESCRIPTION		
ADDED DASH # 775 AS PER ECR		
<small>COPYRIGHT REGAL BELOIT AMERICA, INC. ALL RIGHTS RESERVED. PROPRIETARY AND CONFIDENTIAL INFORMATION - THIS DOCUMENT IS THE PROPERTY OF REGAL BELOIT AMERICA, INC. (OWNER) AND CONTAINS OWNER'S PROPRIETARY INFORMATION. ANY PERSON, CORPORATION OR OTHER FIRM RECEIVING IT IS DEEMED, BY RECEIVING IT, TO AGREE THAT IT, AND/OR ANY PART OF IT, SHALL NOT BE DISCLOSED TO ANY PERSON, CORPORATION OR OTHER ENTITY, DUPLICATED, AND/OR USED, EXCEPT AS EXPRESSLY APPROVED IN WRITING IN ADVANCE BY OWNER. THIS DOCUMENT SHALL BE RETURNED TO OWNER UPON REQUEST. IT MAY BE SUBJECT TO CERTAIN RESTRICTIONS UNDER APPLICABLE EXPORT CONTROL LAWS AND REGULATIONS.</small>		

TOLERANCES UNLESS OTHERWISE SPECIFIED:
DEC. INCH mm
.X ±0.1 [-2.5]
.XX ±0.01 [-0.25]
.XXX ±0.005 [-0.127]
.XXXX ±0.0005 [-0.0127]
REMOVE BURRS & BREAK SHARP
EDGES: .003/.015 [.076/.381] X 45°
CORNER FILLETS: R.02 [.51]
MACHINED SURFACES: 125/32
mm SHOWN IN [BRACKETS]

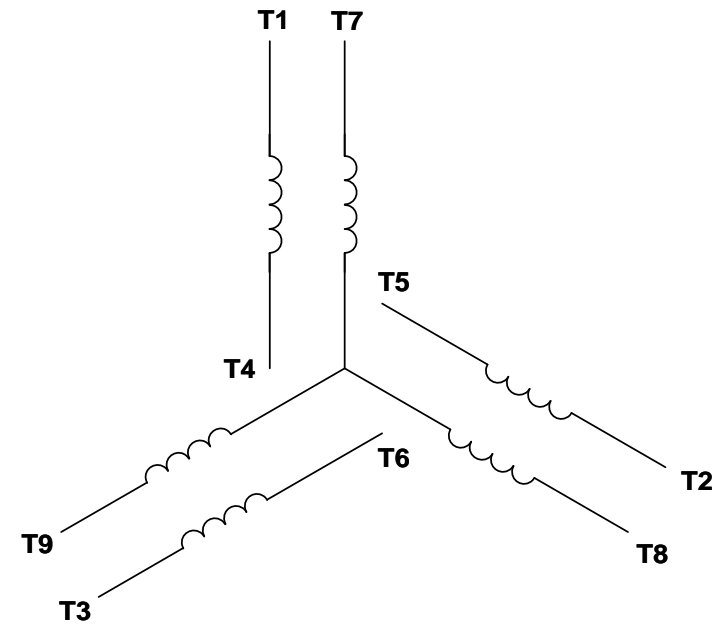
DRAWN BY	GRB
DATE	07/25/08
APPROVED BY	
DATE	
REFERENCE	034974
THIRD ANGLE PROJECTION	

 Regal Beloit America, Inc.	
OUTLINE 140T/56HZ FRAME OPEN DRIP PROOF - RIGID	
MATERIAL	PROCESS/FINISH
SIZE B	DRAWING NUMBER 028859
	SHEET 1 OF 1

VIEW FROM OUTSIDE OF MOTOR AT SWITCH END. Uncontrolled Copy



LINE LEADS



VOLTAGE	L1	L2	L3	JOIN & INSULATE
HIGH	T1	T2	T3	(T4,T7) (T5,T8) (T6,T9)
LOW	T1,T7	T2,T8	T3,T9	T4,T5,T6

DRAWING REVISION G	REVISION BY MVG	DATE 04/05/2017
ECO ECO-0121253	APPROVED BY SM	DATE 04/05/2017

ECO DESCRIPTION
ADDED P1 & P2 FOR TSTAT

TOLERANCES UNLESS OTHERWISE SPECIFIED:

DEC.	INCH	mm	ANGLE
.X	±0.1	[±2.5]	±0.5°
.XX	±0.01	[±0.25]	
.XXX	±0.005	[±0.127]	
.XXXX	±0.0005	[±0.0127]	

REMOVE BURRS & BREAK SHARP EDGES: .003/.015 [.076/.381] X 45°
CORNER FILLETS: R.02 [.51]
MACHINED SURFACES: 125/3.2 INCH/mm

mm SHOWN IN [BRACKETS]

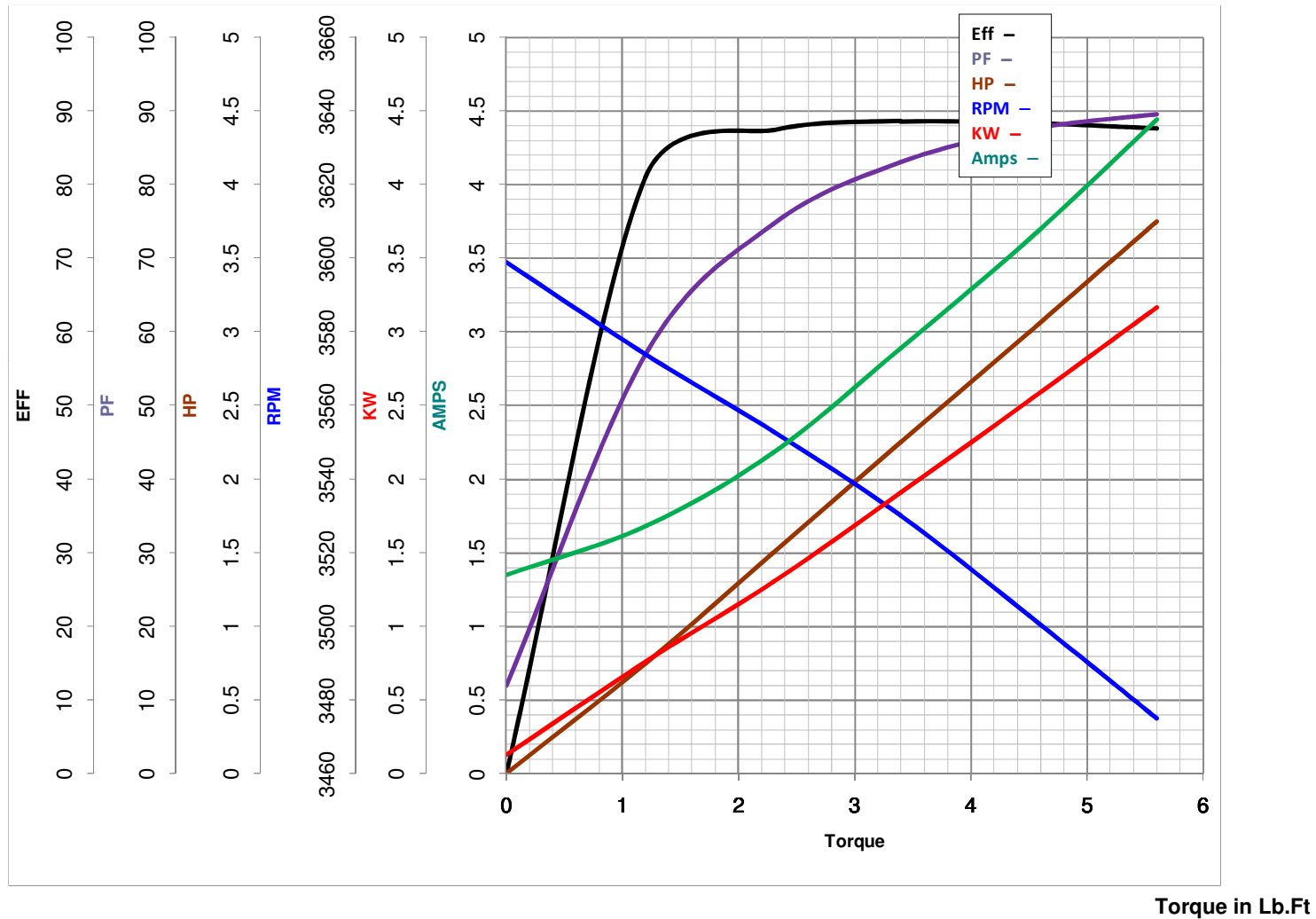
DRAWN BY DBT 12/16/97	DATE
APPROVED BY KH 12/17/97	DATE
REFERENCE	
THIRD ANGLE PROJECTION	

Regal Beloit America, Inc.	
DESCRIPTION CONN DIAGRAM-EXTERNAL 3 PHASE WITH PROTECTOR	
MATERIAL DECAL - 004014 (TSTAT) - 080582	PROCESS/FINISH STOCK
SIZE A	DRAWING NUMBER 00501020
SHEET 1 OF 1	



LEESON ELECTRIC CORPORATION

TYPICAL PERFORMANCE CURVE for AC MOTOR

Model No 121516.00Curve at 460
60
3Volts
HZ
HPHP 3&3PHASE 3VOLTS 230/460&190/380Catalog No 121516.00HZ 60&50RPM 3490&2880

FL TORQUE 4.5 Lb.Ft
 BD TORQUE 17.9 Lb.Ft
 LR TORQUE 15.2 Lb.Ft

FL AMPS 7.2/3.6
 PU TORQUE 14.3 Lb.Ft
 LR AMPS 30.9

WINDING T632175-3

Date 5/21/2018