

PRODUCT INFORMATION PACKET



Model No: C145T34WK28A

Catalog No: 121870.00

121870.00..3HP..3490RPM.145TC.TEFC.230/460V.3PH.60HZ.CONT.40C.1.15SF.RIGID
C.C145T34WK28.....WASHGUARD.NOT.....

General Purpose



Regal and Leeson are trademarks of Regal Beloit Corporation or one of its affiliated companies.

©2018 Regal Beloit Corporation, All Rights Reserved. MC017097E



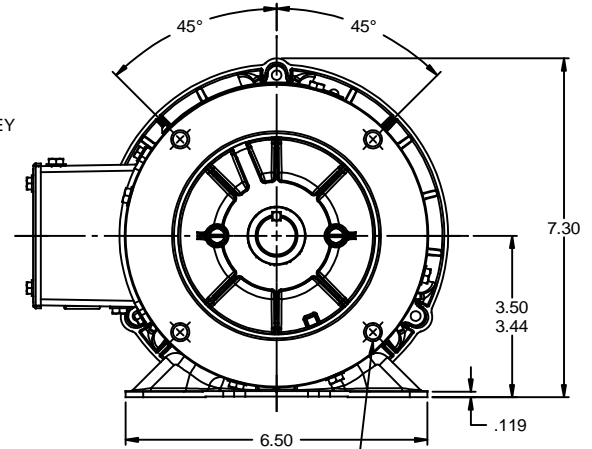
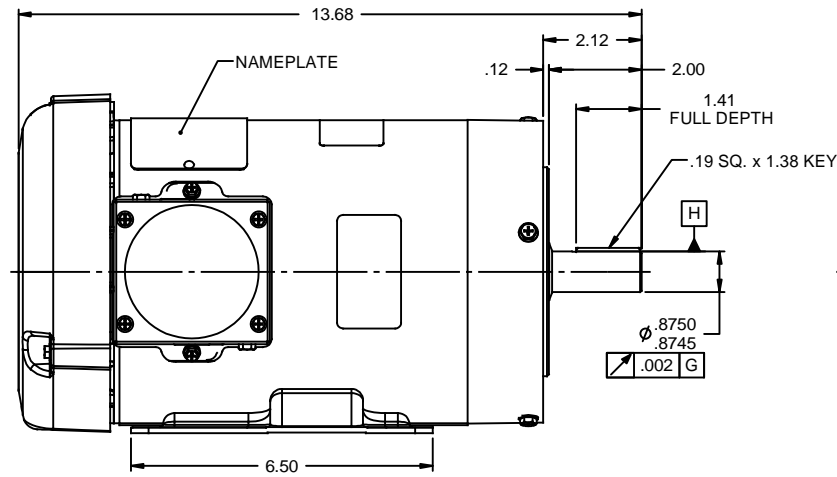
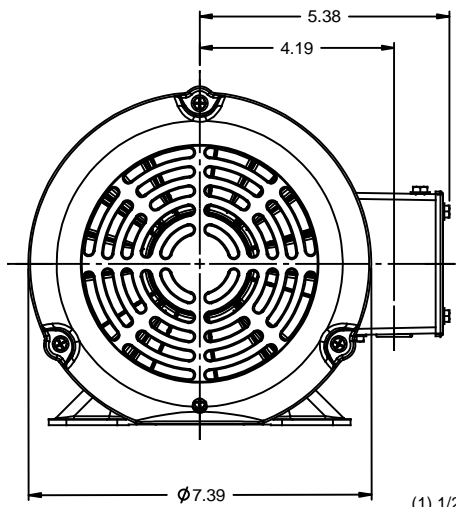


Nameplate Specifications

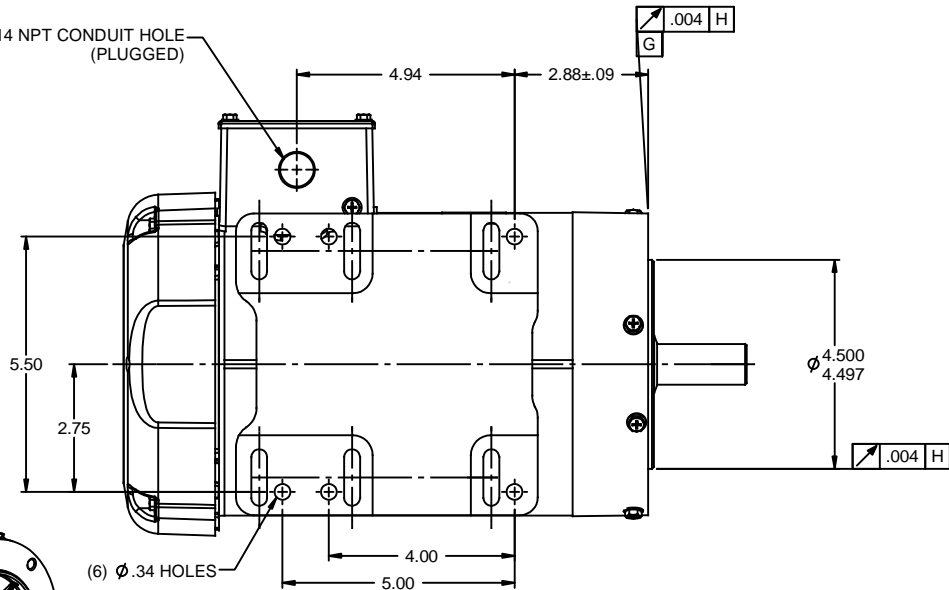
Output HP	3 Hp	Output KW	2.2 kW
Frequency	60 Hz	Voltage	230/460 V
Current	8.0/4.0 A	Speed	3490 rpm
Service Factor	1.15	Phase	3
Efficiency	86.5 %	Duty	Continuous
Insulation Class	F	Design Code	B
KVA Code	N	Frame	145C
Enclosure	Totally Enclosed Fan Cooled	Overload Protector	No
Ambient Temperature	40 °C	Drive End Bearing Size	6205
Opp Drive End Bearing Size	6203	UL	Recognized
CSA	Y	CE	Y
IP Code	55		

Technical Specifications

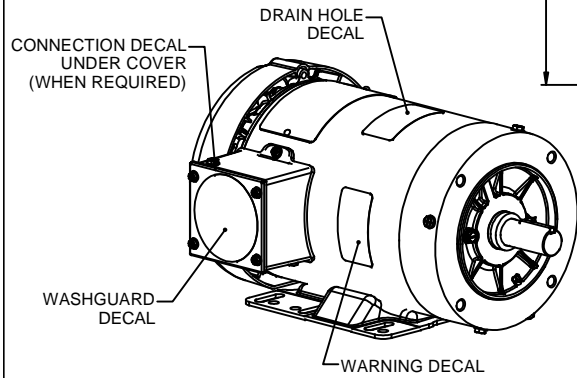
Electrical Type	Squirrel Cage Induction Run	Starting Method	Across The Line
Poles	2	Rotation	Reversible
Mounting	Rigid base	Motor Orientation	HORIZONTAL
Drive End Bearing	BALL	Opp Drive End Bearing	BALL
Frame Material	Rolled Steel	Shaft Type	NEMA 56
Overall Length	13.68 in	Frame Length	7.75 in
Shaft Diameter	0.875 in	Shaft Extension	2 in
Assembly/Box Mounting	F1 ONLY		
Outline Drawing	OL121870	Connection Diagram	005010.01



(1) 1/2-14 NPT CONDUIT HOLE (PLUGGED)



3/8-16 UNC-2B x .56 DEEP
(4) REQ'D. ON A Ø5.875 B.C.



WASHGUARD MOTOR

- SPECIAL FEATURES:
1. SHAFT SEALS & V-RING.
 2. PLUGGED DRAIN HOLES IN ENDBELLS & CONDUIT BOX.
 3. BUNA-N GASKETS THROUGHOUT.
 4. STAINLESS STEEL SHAFT, HARDWARE & NAMEPLATE.

		TOLERANCES UNLESS SPECIFIED		ELECTRIC MOTORS GEARMOTORS AND DRIVES		DRAWN JD 03/22/11	
DEC	INCHES	DEC	INCHES			CHK	
x	±.1			APPR			
.xx	±.03	TITLE OUTLINE - 140TC FRAME		SCALE 3:8			
.xxx	±.005	TEFC - RIGID "C" FACE		REF 607-0003			
.xxxX	±.0005	MATL WASHGUARD		FMF 121870.00			
NO	REVISION	BY & DATE	CHK ANG ±1/2"	FINISH	PAGE OF		
	THIRD ANGLE PROJECTION		RFP	PREV	SIZE DRAWING NO		
			NETWORK FILE NAME OL121870		B OL121870		
					REV		

005010-01

VIEW FROM OUTSIDE OF MOTOR AT SWITCH END.



VOLTAGE	L1	L2	L3	JOIN & INSULATE
HIGH	T1	T2	T3	(T4,T7) (T5,T8) (T6,T9)
LOW	T1,T7	T2,T8	T3,T9	T4,T5,T6

				TOLERANCES UNLESS SPECIFIED		REGAL ™ Regal Beloit America, Inc.		DRAWN RDW 04/12/02				
				DEC.	INCHES			CHK				
				.X	±.1			APPD				
				.XX	±.01			SCALE 1=1				
				.XXX	±.005	TITLE		REF FIG.2-51				
A	UPDATED TO REGAL LOGO			SAJ	06/26/15	AJY	.XXXX	±.0005	MAT'L. DECAL - 004014	FMF		
NO.	REVISION			BY & DATE	CHK	ANG	±1/2"	FINISH	PREV			
THIS DRAWING IN DESIGN AND DETAIL IS OUR PROPERTY AND MUST NOT BE USED EXCEPT IN CONNECTION WITH OUR WORK ALL RIGHTS OF DESIGN AND INVENTION ARE RESERVED THIS IS AN ELECTRONICALLY GENERATED DOCUMENT - DO NOT SCALE THIS PRINT				RFP	04/12/02		CAD FILE	00501001		SIZE	DRAWING NO.	REV.
				DIST	BRF-NLV				A	005010-01		A



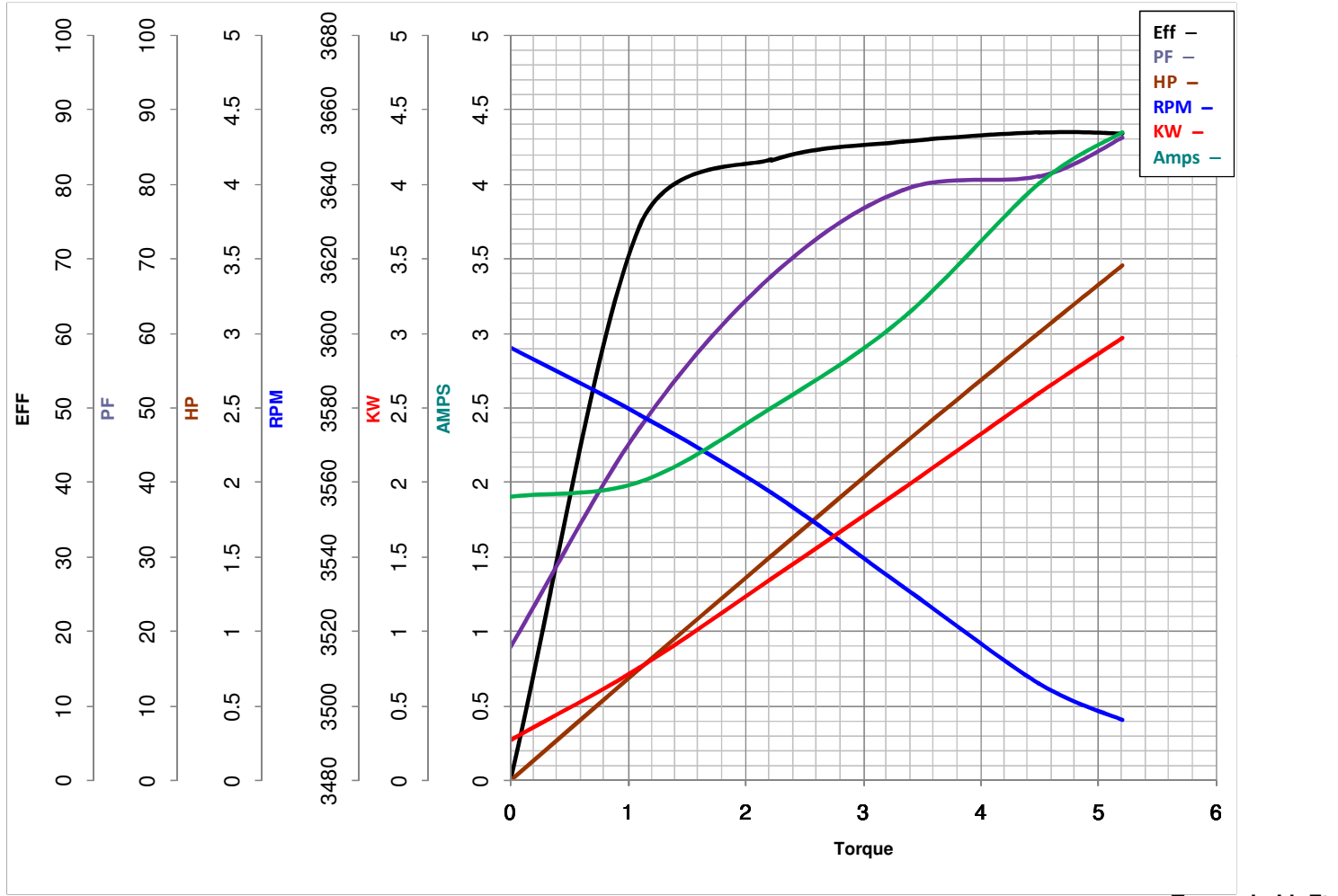
LEESON ELECTRIC CORPORATION
 TYPICAL PERFORMANCE CURVE for AC MOTOR

Model No 121870.00

Curve at 460 Volts HP 3.00 PHASE 3
60 HZ
3 HP VOLTS 230/460

Catalog No 121870.00

HZ 60 RPM 3490



FL TORQUE	<u>4.5</u>	Lb.Ft	FL AMPS	<u>8/4</u>	
BD TORQUE	<u>20.8</u>	Lb.Ft	PU TORQUE	<u>17.5</u>	Lb.Ft
LR TORQUE	<u>17.97</u>	Lb.Ft	LR AMPS	<u>41</u>	
WINDING	T632209-3		Date	<u>6/5/2018</u>	