

PRODUCT INFORMATION PACKET



Model No: C143T17DK9AA

Catalog No: 122093.00

..1..1800.143JP.ODP.230/460.3.60/50HZ.CONT.40C..RIGID C-FACE.....
JP



Regal and Leeson are trademarks of Regal Beloit Corporation or one of its affiliated companies.

©2018 Regal Beloit Corporation, All Rights Reserved. MC017097E



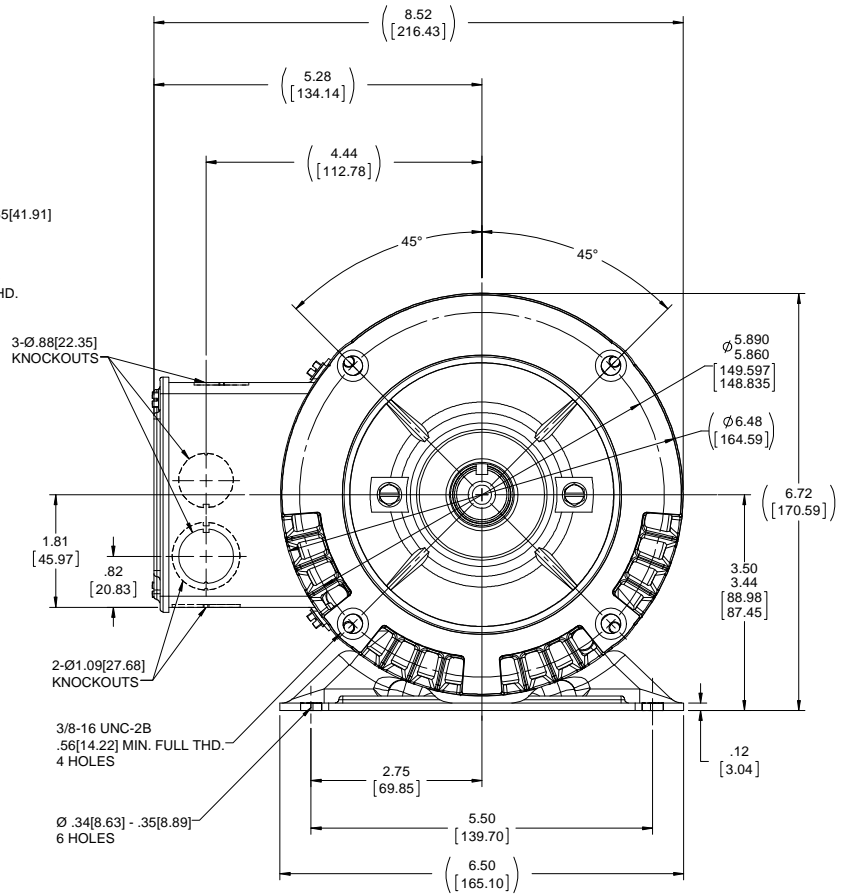
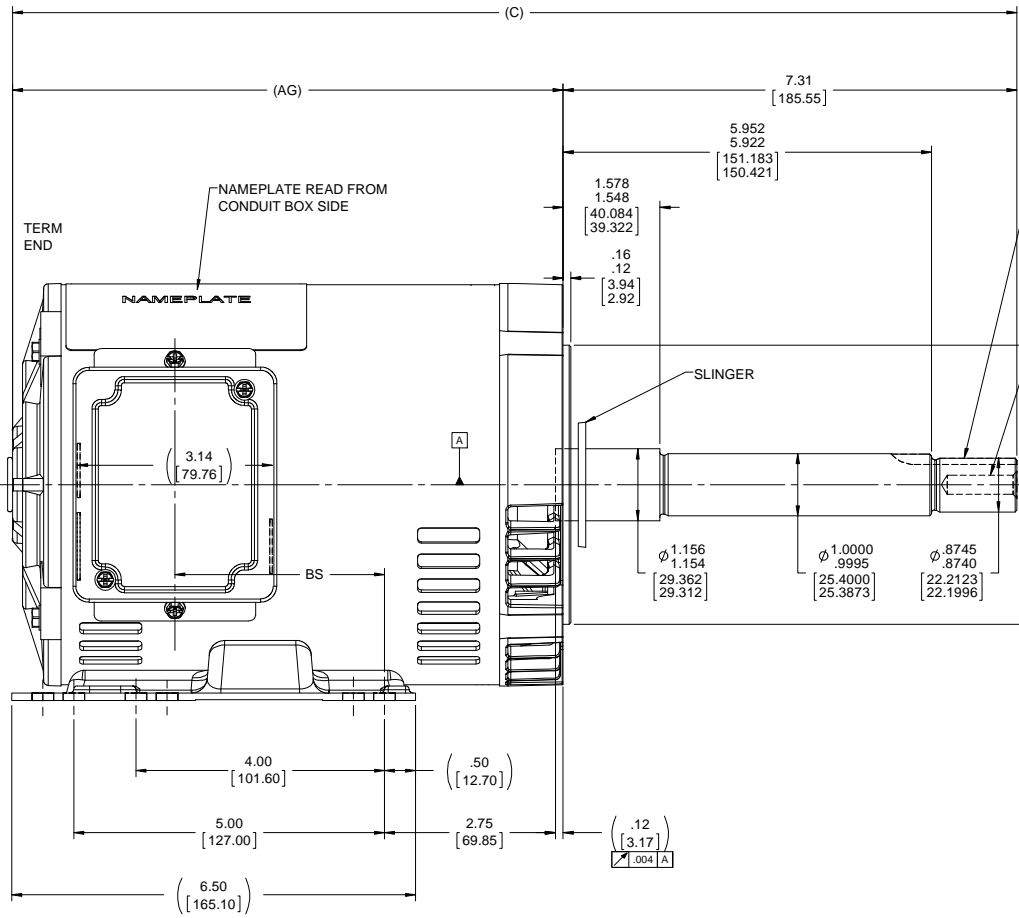


Nameplate Specifications

Output HP	1 Hp	Output KW	0.75 kW
Frequency	60 Hz	Voltage	230/460 V
Current	3.0/1.5 A	Speed	1760 rpm
Service Factor	1.15	Phase	3
Efficiency	85.5 %	Duty	Continuous
Insulation Class	F	Design Code	B
KVA Code	N	Frame	143JP
Enclosure	Drip Proof	Overload Protector	No
Ambient Temperature	40 °C	Drive End Bearing Size	6206
Opp Drive End Bearing Size	6203	UL	Recognized
CSA	Y	CE	Y
IP Code	22		

Technical Specifications

Electrical Type	Squirrel Cage Inverter Rated	Starting Method	Line Or Inverter
Poles	4	Rotation	Reversible
Mounting	Rigid base	Motor Orientation	HORIZONTAL
Drive End Bearing	BALL	Opp Drive End Bearing	BALL
Frame Material	Rolled Steel	Shaft Type	JP
Overall Length	18.18 in	Frame Length	9.06 in
Shaft Diameter	0.875 in	Shaft Extension	7.34 in
Assembly/Box Mounting	F1 ONLY		
Outline Drawing	A-100132-906	Connection Diagram	A-EE7308



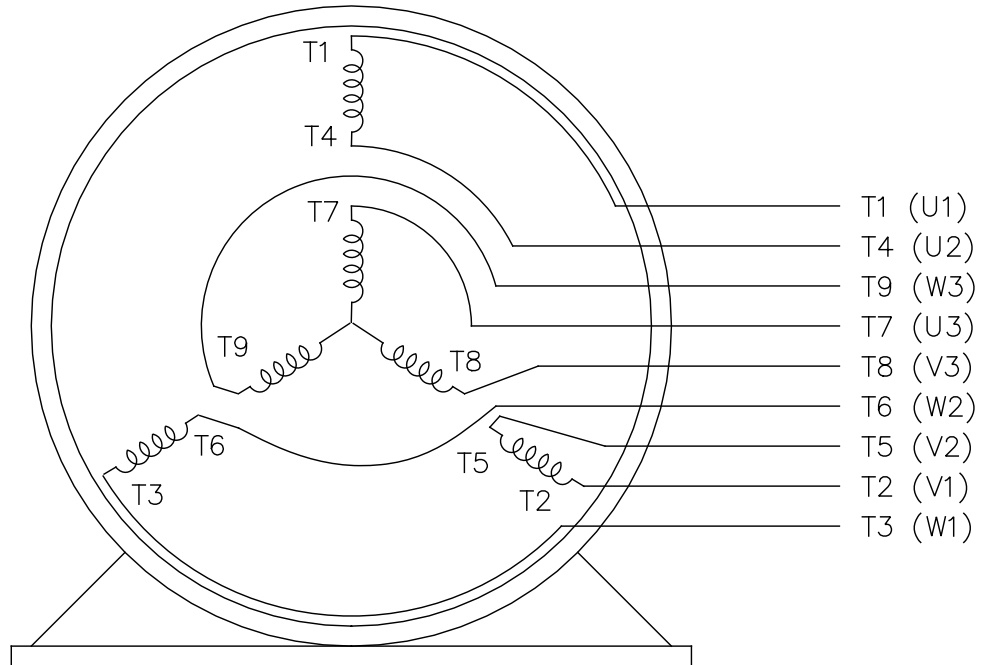
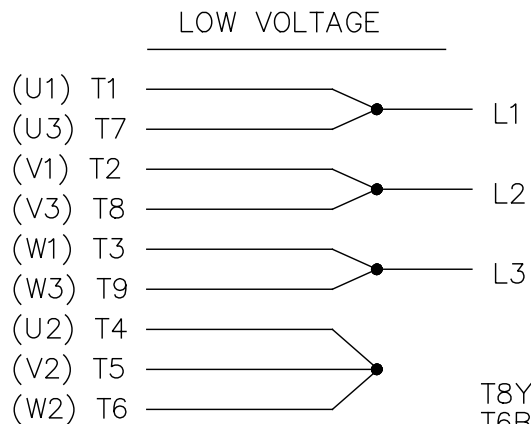
DASH NO.	"C"	"AG"	"BS"
706	16.17[410.71]	8.87[225.29]	3.37[85.59]
756	16.67[423.41]	9.37[237.99]	3.87[98.29]
806	17.17[436.11]	9.87[250.69]	4.37[110.99]
856	17.67[448.81]	10.37[263.39]	4.87[123.69]
906	18.17[461.51]	10.87[276.09]	5.37[136.39]

NOTES:
CONDUIT BOX CAN BE ROTATED IN 180° STEPS.

DRAWING REVISION ECO-0143026	REVISION BY A. KEETHA PST	DATE 04/11/2018	TOLERANCES UNLESS OTHERWISE SPECIFIED: FRACTIONS .001 .005 .010 .015 DECIMALS .001 .005 .010 .015 ANGLES 17 30'	DRAWN BY BRH	DATE 11/02/1995	APPROVED BY GK	DESCRIPTION OUTLINE
OUTLINE CONVERSION PROJECT THIS DRAWING IS THE PROPERTY OF REGAL BELLOI AMERICA, INC. IT IS TO BE USED ONLY FOR THE PROJECT AND FOR THE SPECIFIC PURPOSES STATED THEREIN. IT IS NOT TO BE REPRODUCED, COPIED, OR TRANSMITTED IN ANY FORM OR BY ANY MEANS, ELECTRONIC OR MECHANICAL, INCLUDING PHOTOCOPYING, RECORDING, OR BY ANY INFORMATION STORAGE AND RETRIEVAL SYSTEM, WITHOUT THE WRITTEN PERMISSION OF REGAL BELLOI AMERICA, INC.				REGAL BELLOI AMERICA, INC. 140 FR. 88-DR-PR-38-C FACE-3P EXT.	DATE 11/02/1995	MATERIAL 140 FR. 88-DR-PR-38-C FACE-3P EXT.	REFERENCE 140 FR. 88-DR-PR-38-C FACE-3P EXT.
MACHINED SURFACES: UNLESS OTHERWISE SPECIFIED, ALL DIMENSIONS ARE TO BE TAKEN TO THE UNFINISHED SURFACE. UNLESS OTHERWISE SPECIFIED, ALL DIMENSIONS ARE TO BE TAKEN TO THE UNFINISHED SURFACE.				THIRD ANGLE PROJECTION	SIZE D	DRAWING NUMBER 100132	SHEET 1 OF 1

EE7308

THREE PHASE
DUAL VOLTAGE MOTOR



VIEW OF TERMINAL END

REF.
WINDING DIAGRAM

T8Y, T2Y, T2BL, T4BX, T2EC, T2G
T6BZ, T2B, T6BL, T4AV, T6B, T4B

OPTIONAL CORD
CONNECTION

L1 — WHITE
L2 — RED
L3 — BLACK

NO.	REVISION	BY & DATE	CHK	ANG	TOLERANCES UNLESS SPECIFIED		FINISH	DRAWN RM 11/20/1990				
					DEC.	INCHES						
5	CHG TO REGAL LOGO	SL 09/10/2015	AB					CHK ML 11/21/1990				
4	REVISED IEC NOTATIONS	MSG 11/15/2011	CMN	.X	±.1			APPD SAS 04/24/2003				
3	ADDED IEC NOTATIONS... (U1), (V1) ETC. MU95194	MSG 5/10/2010	MJS	.XX	±.02		TITLE CONNECTION DIAGRAM	SCALE 1=1				
2	ADDED THE OPTIONAL CORD CONNECTION MU46318	RDH 04/24/2003	DRS	.XXX	±.005		3Ø - DUAL VOLTAGE MOTOR	REF				
1	REDRAWN	RM 11/20/1990		.XXXX	±.0005		MAT'L.	FMF				
					±7'30"			PREV				
THIS DRAWING IN DESIGN AND DETAIL IS OUR PROPERTY AND MUST NOT BE USED EXCEPT IN CONNECTION WITH OUR WORK ALL RIGHTS OF DESIGN AND INVENTION ARE RESERVED THIS IS AN ELECTRONICALLY GENERATED DOCUMENT - DO NOT SCALE THIS PRINT							RFP	CAD FILE ee7308	SIZE A	DRAWING NO. EE7308	PAGE OF 5	REV. 5
							DIST WP					



Regal Beloit America, Inc.

3Ø - DUAL VOLTAGE MOTOR



1051 CHEYENNE AVE.
GRAFTON, WI 53024
PH. 262-377-8810

CERTIFICATION DATA SHEET

CATALOG #: 122093.00

CONN. DIAGRAM: A-EE7308

MOUNTING: F1 ONLY

OUTLINE: A-100132-906

WINDING #: ZT4259 3

TYPICAL MOTOR PERFORMANCE DATA

HP	KW	SYNC. RPM	F.L. RPM	FRAME	ENCLOSURE	KVA CODE	DESIGN
183/4	0.75&0.56	1800	1760&1460	143Jp	DP	N	B

PH	HZ	VOLTS	AMPS	START TYPE	DUTY	INSL	S.F.	AMB°C
3	60/50	230/460&190/380	3/1.5&3/1.5	LINE OR INVERTER	CONTINUOUS	F3	1.15/1.0	40

FULL LOAD EFF:	85.5&85.3	3/4 LOAD EFF:	84.6	1/2 LOAD EFF:	81.3	GTD. EFF	82.5	ELEC. TYPE
FULL LOAD PF:	71&69.3	3/4 LOAD PF:	62.6	1/2 LOAD PF:	49.8	SQ CAGE INV RATED		

F.L. TORQUE	LOCKED ROTOR AMPS	L.R. TORQUE	B.D. TORQUE	F.L. RISE°C
3 LB-FT	29 / 14.5	11.2 LB-FT 373 %	15.4 LB-FT 513 %	21

SOUND PRESSURE @ 3 FT.	SOUND POWER	ROTOR WK^2	MAX. WK^2	SAFE STALL TIME	STARTS / HOUR	APPROX. MOTOR WGT
56 DBA	66 DBA	0.117 LB-FT^2	10 LB-FT^2	20 SEC.	2	0 LBS.

*** SUPPLEMENTAL INFORMATION ***

DE BRACKET TYPE	ODE BRACKET TYPE	MOUNT TYPE	ORIENTATION	SEVERE DUTY	HAZARDOUS LOCATION	DRIP COVER	SCREENS	PAINT
C-FACE	STANDARD	RIGID	HORIZONTAL	FALSE	NONE	PROVISIONS ONLY	NONE	BLUE (POWDER)
BEARINGS		GREASE	SHAFT TYPE	SPECIAL DE	SPECIAL ODE	SHAFT MATERIAL	FRAME MATERIAL	
DE ODE								
BALL BALL								
6206 6203	POLYREX EM	JP	NONE	NONE	1144 STRESSPROOF (C-223)	ROLLED STEEL		

THERMO-PROTECTORS				THERMISTORS	CONTROL	SPACE HEATERS
THERMOSTATS	PROTECTORS	WDG RTDS	BRG RTDS	NONE	FALSE	NONE
NONE	NOT	NONE	NONE			

INVERTER TORQUE: CONSTANT 2:1

INV. HP SPEED RANGE: NONE

ENCODER:	NONE
NONE	NONE
NONE	PPR

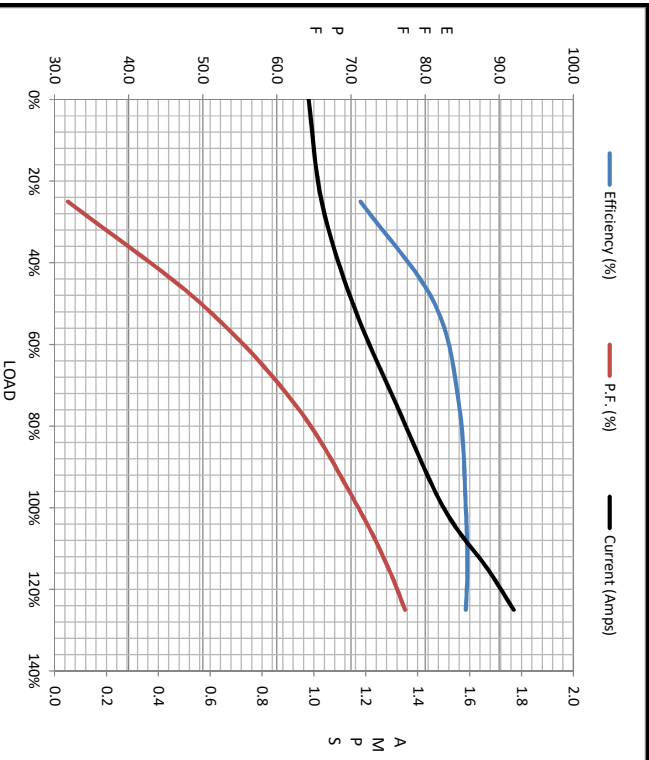
BRAKE:	NONE	NONE
NONE	P/N NONE	
NONE	NONE	
NONE	FT-LB	NONE V NONE HZ

S



Motor Load Data						
Load	0%	25%	50%	75%	100%	LR
Current (Amps)	0.98	1.03	1.15	1.32	1.50	14.5
Torque (ft-lb)	0.00	0.73	1.47	2.22	3.0	11.2
RPM	1800	1790	1781	1772	1760	0
Efficiency (%)		71.3	81.3	84.6	85.5	
P.F. (%)	11.1	31.8	49.8	62.6	71.0	73.4

Motor Speed Data						Information Block																											
LR	Pull-Up	BD	Rated	Idle		HP	Sync. RPM	Frame	Enclosure	Construction	Voltage	Frequency	Design	LR Code letter	Service Factor	Temp Rise @ FL	Duty	Ambient	Elevation	Rotor/Shaft wk ²	Ref Wdg	Sound Pressure @ 1M	VFD Rating	Outline Dwg	Conn. Diag	Additional Specifications:	R1	R2	X1	X2	Xm		
0	120	1285	1760	1800		1.0	1800	143	DP	TDR	230/460#190/380	60	A	N	1.15	21	CONT	40 °C	1,000 feet	0.12	NONE	56 dB(A)	CONSTANT 2:1	A-100132-906	A-EE7308		0.0000	0.0000	0.0000	0.0000	0.0000		
Current (Amps)	14.5	13.0	9.8	1.50	0.98																												
Torque (ft-lb)	11.2	10.0	15.4	3.0	0.00																												



EQUIV CKT (OHMS / PHASE)					
R1	R2	X1	X2	Xm	
0.0000	0.0000	0.0000	0.0000	0.0000	

