

PRODUCT INFORMATION PACKET



Model No: C184T14FC3C
Catalog No: 131508.00
5HP.3.7kW.1425RPM.184.IP54.220/380V.3PH.50HZ.CONT.NOT.40C.1.0SF.C FACE.50
HERTZ.C184T14FC3C
50 Hz



Regal and Leeson are trademarks of Regal Beloit Corporation or one of its affiliated companies.
©2018 Regal Beloit Corporation, All Rights Reserved. MC017097E





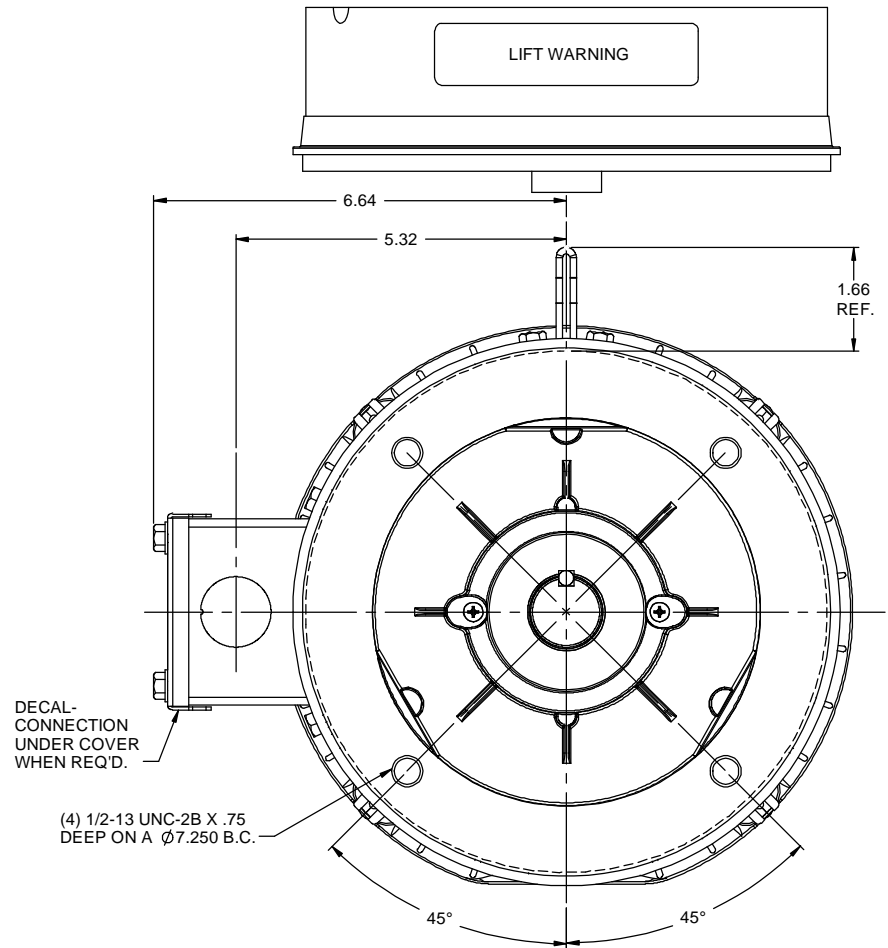
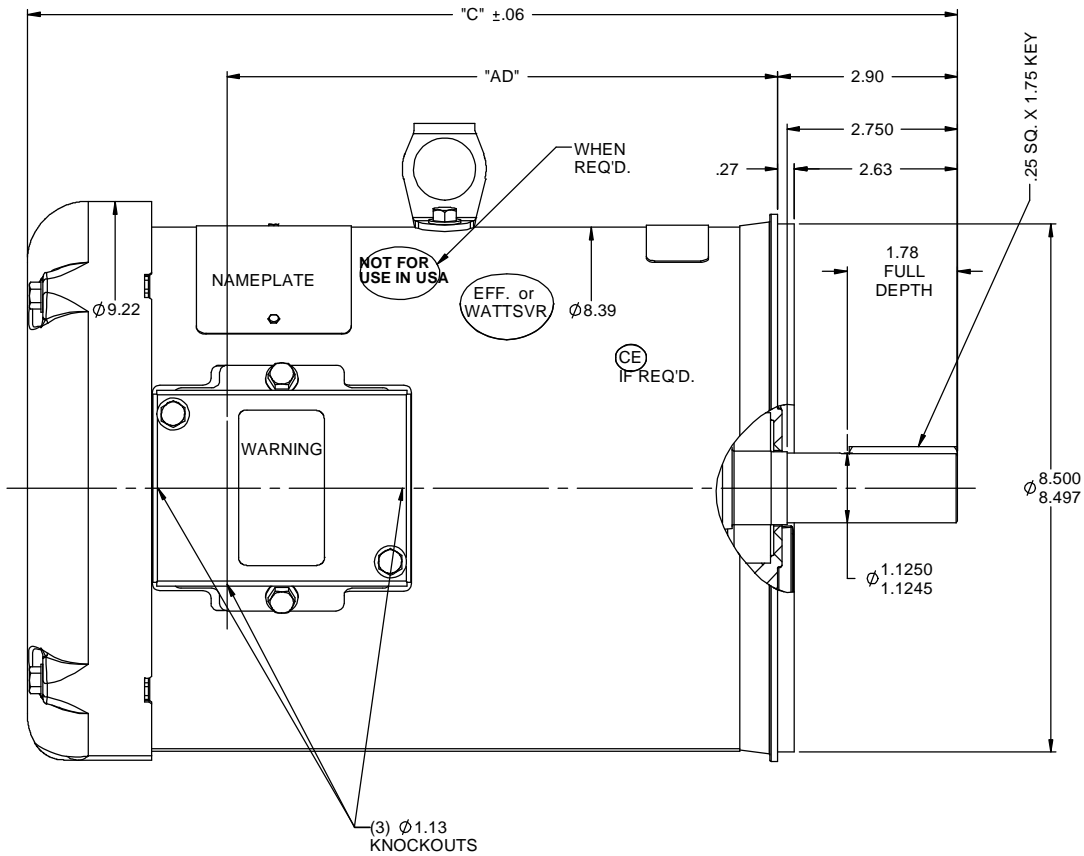
Nameplate Specifications

Output HP	5 Hp	Output KW	3.7 kW
Frequency	50 Hz	Voltage	220/380/440 V
Current	14.0/8.1/7.0 A	Speed	1425 rpm
Service Factor	1	Phase	3
Efficiency	87.5 %	Duty	Continuous
Insulation Class	F	Design Code	B
KVA Code	L	Frame	184TC
Enclosure	Totally Enclosed Fan Cooled	Overload Protector	No
Ambient Temperature	40 °C	Drive End Bearing Size	6206
Opp Drive End Bearing Size	6205	UL	Recognized
CSA	Y	CE	Y
IP Code	54		

Technical Specifications

Electrical Type	Squirrel Cage Induction Run	Starting Method	Across The Line
Poles	4	Rotation	Reversible
Mounting	Round	Motor Orientation	HORIZONTAL
Drive End Bearing	BALL	Opp Drive End Bearing	BALL
Frame Material	Rolled Steel	Shaft Type	T
Overall Length	15.47 in	Frame Length	10.00 in
Shaft Diameter	1.125 in	Shaft Extension	2.75 in
Assembly/Box Mounting	F1 ONLY		
Outline Drawing	035518-1000	Connection Diagram	005381.01

RBC PROPRIETARY AND CONFIDENTIAL INFORMATION
 This document is the property of REGAL BELOIT CORPORATION ("RBC") including its subsidiaries and divisions and contains proprietary information of RBC. This document is loaned on the express condition that neither it nor the information contained therein shall be disclosed to others without the express written consent of RBC, and that the information shall be used by the recipient only as approved expressly by RBC. This document shall be returned to RBC upon its request. This document may be subject to certain restrictions under U.S. export control laws and regulations.



GASKETS THROUGHOUT
 MAXIMUM FACE RUNOUT TO BE .004 T.I.R.
 MAXIMUM PILOT ECCENTRICITY TO BE .004 T.I.R.
 PERMISSIBLE SHAFT RUNOUT TO BE .002 T.I.R.

DASH NO.	"C"	"AD"
750	12.97	6.88
800	13.47	7.38
850	13.97	7.88
900	14.47	8.38
950	14.97	8.88
1000	15.47	9.38
1050	15.97	9.88
1100	16.47	10.38
1150	16.97	10.88

NO		REVISION	BY & DATE	CHK	LANG	±1/2°	FINISH	PREV	SIZE	DRAWING NO	REV
		UPDATED & REDRAWN IN SOLIDWORKS	LST 12/17/2009	XX	XXX	±.0005	GENERAL PURPOSE		B	035518	-



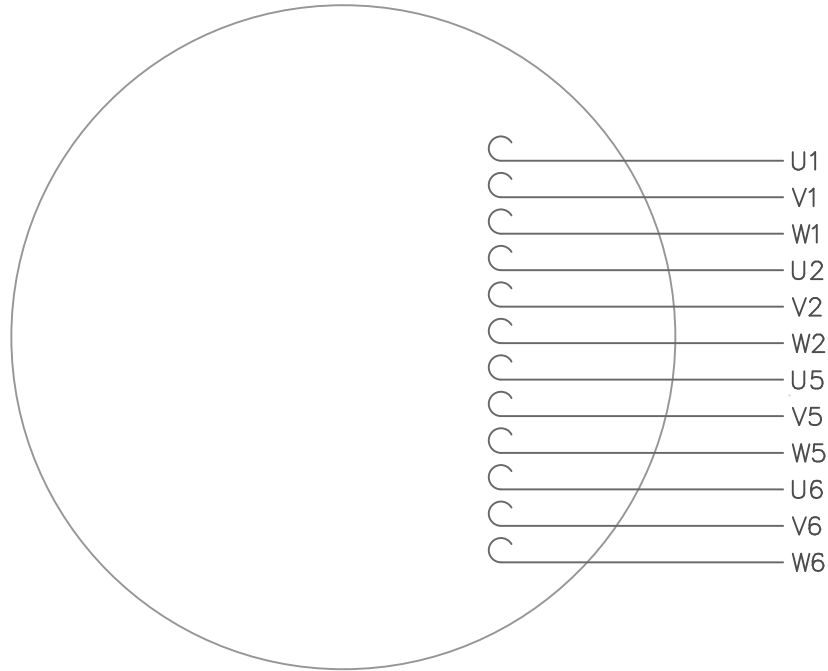
TOLERANCES UNLESS SPECIFIED
 DEC INCHES
 X ±.1
 XX ±.03
 XXX ±.005
 XXXX ±.0005

TITLE OUTLINE - 180TC FRAME
 TEFC - "C" FACE
 MATL GENERAL PURPOSE

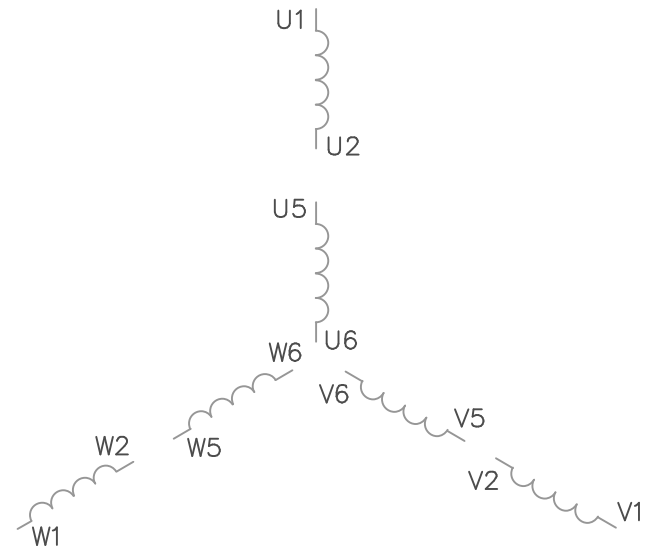
DRAWN RDW 4/18/07
 CHK
 APPR SW 4/18/07
 SCALE 1:2
 REF 035452
 FMF
 PAGE OF



VIEW FROM OUTSIDE OF MOTOR AT SWITCH END.



LINE LEADS



VOLTAGE	L1	L2	L3	JOIN
(2Δ) LOW	U1,W2 U5,W6	V1,U2 V5,U6	W1,V2 W5,V6	-----
(2Y) MEDIUM	U1,U5	V1,V5	W1,W5	(U2,V2,W2) (U6,V6,W6)
(1Δ) HIGH	U1,W6	V1,U6	W1,V6	(U2,U5) (V2,V5) (W2,W5)

TOLERANCES UNLESS OTHERWISE SPECIFIED

DECIMALS

.00	± .01
.000	± .005
.0000	± .0005
FRACTIONS	± 1/64

ANGLES	± 1/2°
INCH/MM	

LEESON ELECTRIC CORPORATION

DRAWN	GWS 2/23/96	TITLE	EXT. WIRING DIAGRAM TYPE "T" W/O PROTECTOR	
CH'K'D.		MAT'L.	DECAL - 080590	
APPR.		FINISH	STOCK	SIZE
SCALE	1=1	REF.	005352 PG 3	DRAWING NO.
		FMF		A
				005381-01

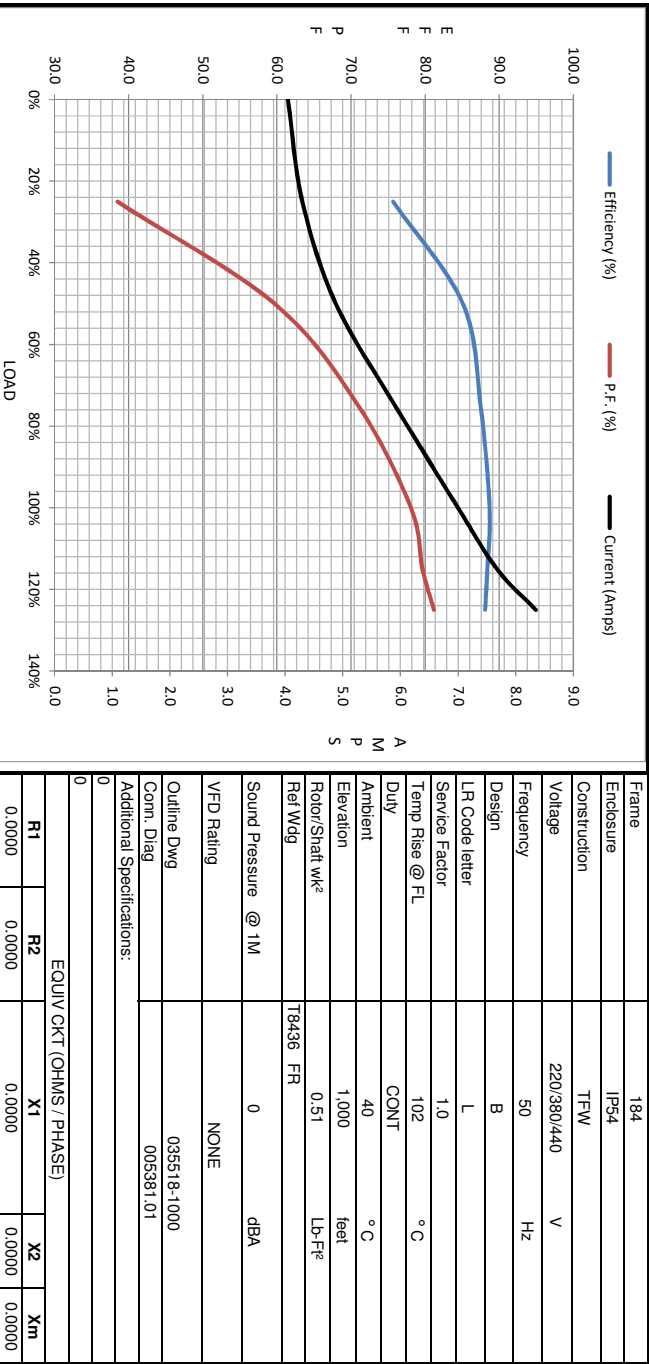
1	REDRAWN TO CURRENT STANDARDS	DBT	05/30/97
NO.	REVISION	BY	DATE

THIS DRAWING IN DESIGN AND DETAIL IS OUR PROPERTY AND MUST NOT BE USED EXCEPT IN CONNECTION WITH OUR WORK ALL RIGHTS OF DESIGN AND INVENTION ARE RESERVED



Motor Load Data								
Load	0%	25%	50%	75%	100%	115%	125%	LR
Current (Amps)	4.1	4.3	4.9	5.9	7.0	7.7	8.4	62.0
Torque (ft-lb)	0.00	4.6	9.2	13.8	18.4	20.7	23.0	74.2
RPM	1500	1489	1474	1457	1441	1433	1420	0
Efficiency (%)		75.7	85.1	87.5	88.7	88.4	88.1	
P.F. (%)	10.6	38.5	59.7	71.0	78.1	79.7	81.2	0.0

Motor Speed Data						Information Block																						
LR	Pull-Up	BD	Rated	Idle		HP	Sync. RPM	Frame	Enclosure	Construction	Voltage	Frequency	Design	LR Code letter	Service Factor	Temp Rise @ FL	Duty	Ambient	Elevation	Rotor/Shaft wk ²	Ref Wdg	Sound Pressure @ 1M	VFD Rating	Outline Dwg	Conn. Diag	Additional Specifications:		
0	750	1380	1441	1500		5.0	1500	184	IP54	TFW	220/380/440	50	B	L	1.0	102	CONT	40	1,000	0.51	T8436 FR	0	dB(A)	NONE	035518-1000	005381.01		
Current (Amps)	62.0	57.0	37.2	7.0	4.1																							
Torque (ft-lb)	74.2	63.7	78.0	18.4	0.00																							



EQUIV CKT (OHMS / PHASE)	R1	R2	X1	X2	Xm
	0.0000	0.0000	0.0000	0.0000	0.0000

