

# PRODUCT INFORMATION PACKET



Model No: C184C17DC5A  
Catalog No: 131544.00  
3HP..1740RPM.184.DP.115/230V.1PH.60HZ.CONT.NOT.40C.1.15SF.C FACE.GENERAL  
PURPOSE.C184C17DC5A  
Open Drip Proof (ODP)



Regal and Leeson are trademarks of Regal Beloit Corporation or one of its affiliated companies.  
©2018 Regal Beloit Corporation, All Rights Reserved. MC017097E



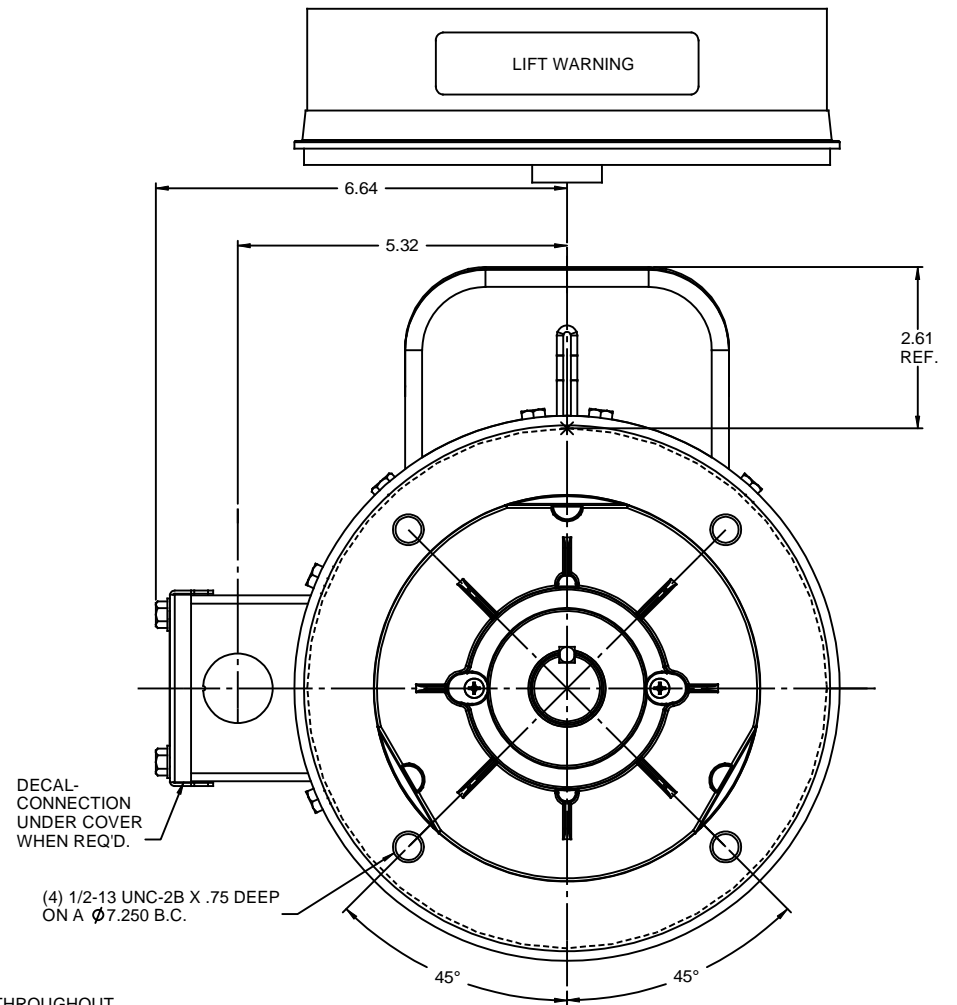
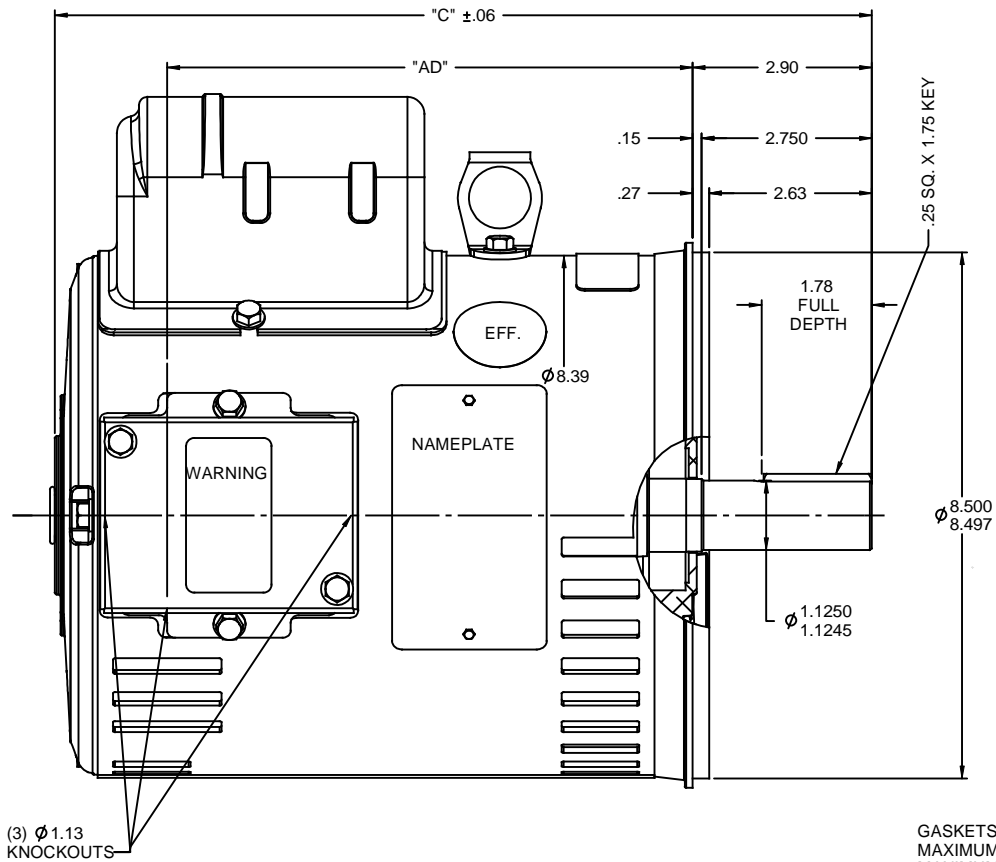


## Nameplate Specifications

Output HP	3 Hp	Output KW	2.2 kW
Frequency	60 Hz	Voltage	115/230 V
Current	33.8/16.9 A	Speed	1740 rpm
Service Factor	1.15	Phase	1
Efficiency	75.5 %	Duty	Continuous
Insulation Class	F	Design Code	L
KVA Code	J	Frame	184TC
Enclosure	Drip Proof	Overload Protector	No
Ambient Temperature	40 °C	Drive End Bearing Size	6206
Opp Drive End Bearing Size	6205	UL	Recognized
CSA	Y	CE	N
IP Code	22		


## Technical Specifications

Electrical Type	Capacitor Start Induction Run	Starting Method	Across The Line
Poles	4	Rotation	Selective Counterclockwise
Mounting	Round	Motor Orientation	HORIZONTAL
Drive End Bearing	BALL	Opp Drive End Bearing	BALL
Frame Material	Rolled Steel	Shaft Type	T
Overall Length	14.20 in	Frame Length	10.00 in
Shaft Diameter	1.125 in	Shaft Extension	2.75 in
Assembly/Box Mounting	F1 ONLY		
Outline Drawing	035371-1000	Connection Diagram	005062.01

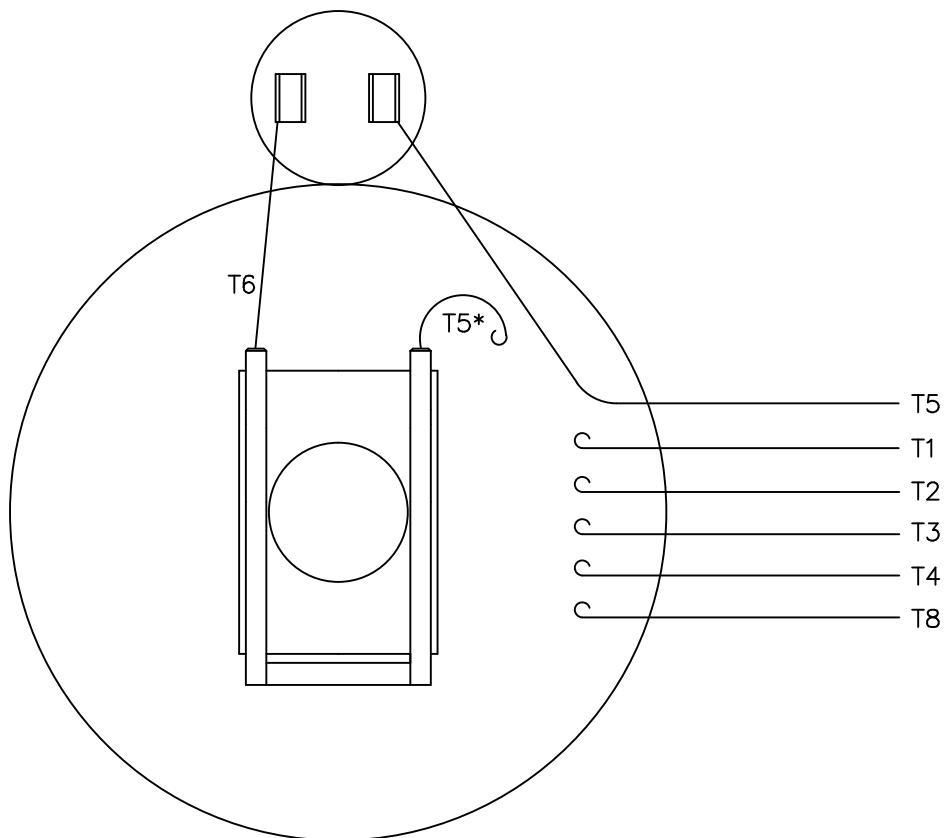


GASKETS THROUGHOUT  
MAXIMUM FACE RUNOUT TO BE .004 T.I.R.  
MAXIMUM PILOT ECCENTRICITY TO BE .004 T.I.R.  
PERMISSIBLE SHAFT RUNOUT TO BE .002 T.I.R.

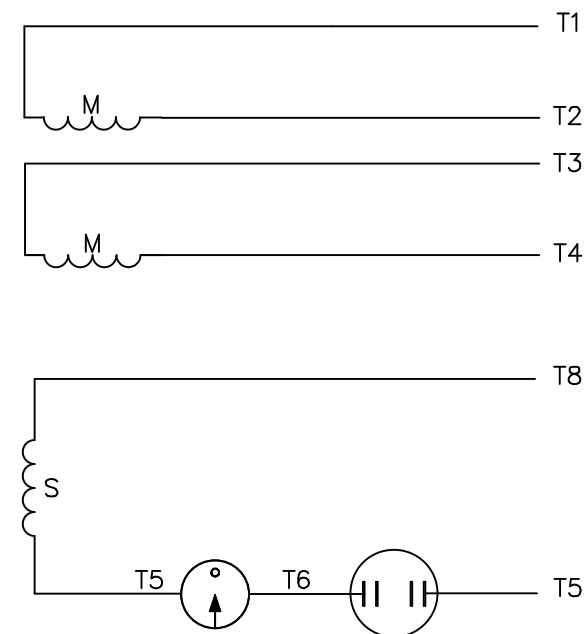
DASH NO.	"C"	"AD"
850	12.70	7.88
900	13.20	8.38
950	13.70	8.88
1000	14.20	9.38
1050	14.70	9.88
1100	15.20	10.38
1150	15.70	10.88

				TOLERANCES UNLESS SPECIFIED		DRAWN PG 10/3/97	
				DEC INCHES		CHK RSK 10/3/97	
				X ±.1	TITLE OUTLINE - 180TC FRAME DRIP PROOF - "C" FACE	APPR	
				.XX ±.03		SCALE 1:2	
				.XXX ±.005		REF 035059	
- UPDATED AND REDRAWN IN SOLIDWORKS				XX .XXX ±.0005		FMF STANDARD	
NO	REVISION	BY & DATE	CHK	ANG ±1/2°	FINISH	PAGE OF	
			RFP		PREV	SIZE B	DRAWING NO 035371
THIRD ANGLE PROJECTION				NETWORK FILE NAME			REV -

VIEW FROM OUTSIDE OF MOTOR AT SWITCH END.




## LINE LEADS



\* THIS LEAD MAY BE WHITE

	ROTATION FACING LEAD END	L1	L2	JOIN
HIGH VOLT	C.C.W.	T1	T4 T5	T2,T3 T8
	C.W.	T1	T4 T8	T2,T3 T5
LOW VOLT	C.C.W.	T1,T3 T8	T2,T4 T5	---
	C.W.	T1,T3 T5	T2,T4 T8	---

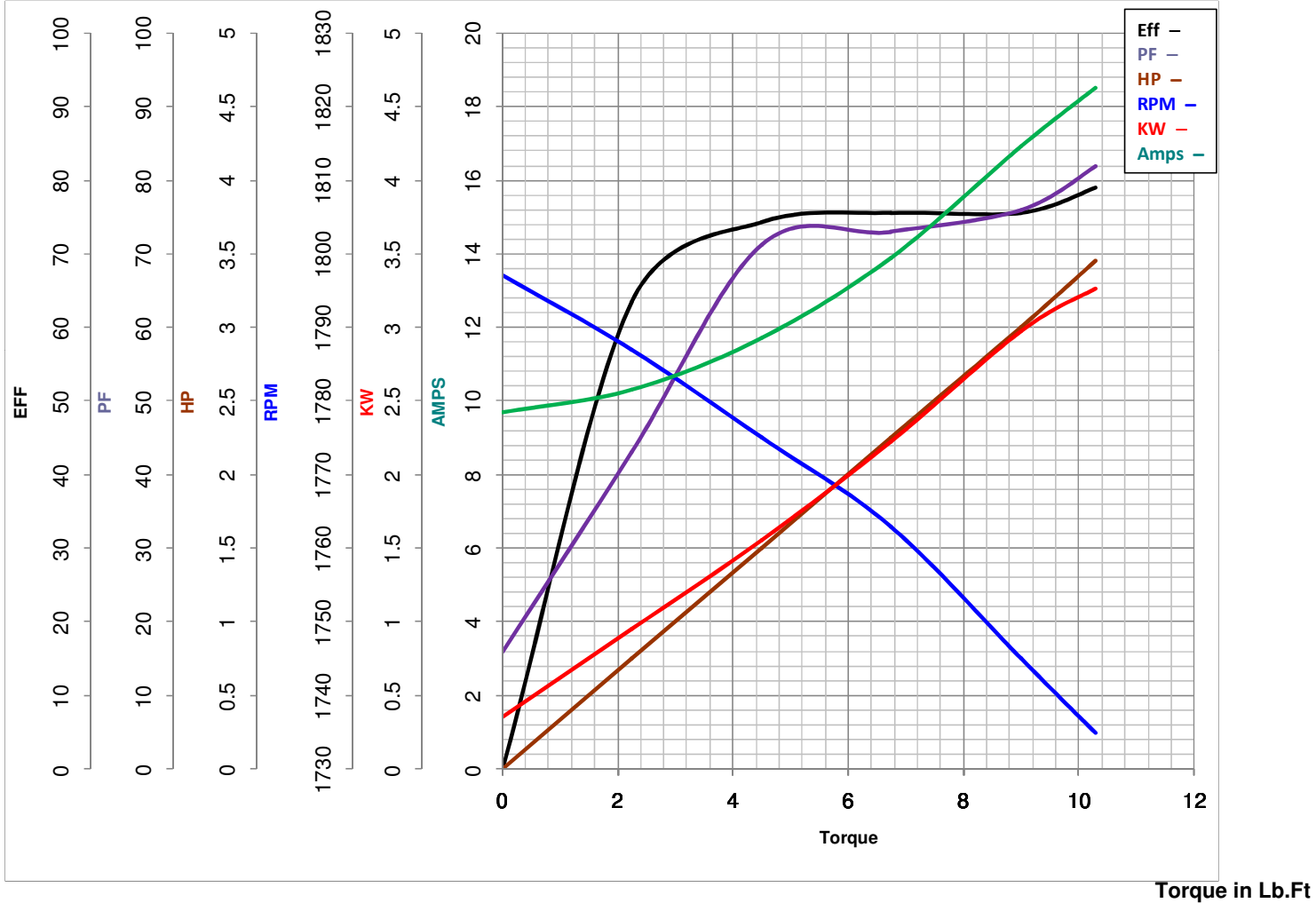
				TOLERANCES UNLESS SPECIFIED			ELECTRIC MOTORS GEARMOTORS AND DRIVES		DRAWN JRW 12/05/74	
				DEC.	INCHES				CHK	
				.X	±.1				APPD	T.E.M.
12	ALTERNATE T5 LEAD MARKING WAS RED	RLW	8/6/02	.XX	±.01	TITLE	EXT. WIRING DIAGRAM TYPE "C" W/O PROTECTOR		SCALE 1=1	
11	ADDED ALTERNATE T5 LEAD MARKING	RLW	5/31/02	KH	.XXX				REF A-005061	
10	UPDATED TO CURRENT STANDARDS	DBT	06/09/97		.XXXX				FMF	
NO.	REVISION	BY & DATE	CHK	ANG	±1/2"	FINISH	DECAL - 004012		PREV	
				RFP		CAD FILE	00506201		SIZE	DRAWING NO.
				DIST	NLV				A	005062-01
										REV.
										12

THIS DRAWING IN DESIGN AND DETAIL IS OUR PROPERTY AND MUST NOT BE USED EXCEPT  
IN CONNECTION WITH OUR WORK ALL RIGHTS OF DESIGN AND INVENTION ARE RESERVED  
THIS IS AN ELECTRONICALLY GENERATED DOCUMENT - DO NOT SCALE THIS PRINT

Model No 131544.00Catalog No 131544.00

# LEESON ELECTRIC CORPORATION

## TYPICAL PERFORMANCE CURVE for AC MOTOR

Curve at 230  
60  
3Volts  
HZ  
HPHP 3.00VOLTS 115/230PHASE 1HZ 60RPM 1740

FL TORQUE 9 Lb.Ft  
 BD TORQUE 18.4 Lb.Ft  
 LR TORQUE 24.6 Lb.Ft

WINDING C8428-3

FL AMPS 33.8/16.9  
 PU TORQUE 17.5 Lb.Ft  
 LR AMPS 90.6

Date 3/27/2018