

PRODUCT INFORMATION PACKET



Model No: P184K17FC7C

Catalog No: 131602.00

..5HP..1740RPM.184TC.TEFC./230V.1PH.60HZ.CONT.40C.1.15SF.C FACE.P184K17FC7C.....AG - FARM
DUTY/GENERAL PURPOSE.MANUAL.....

Agricultural



Regal and Leeson are trademarks of Regal Beloit Corporation or one of its affiliated companies.

©2018 Regal Beloit Corporation, All Rights Reserved. MC017097E





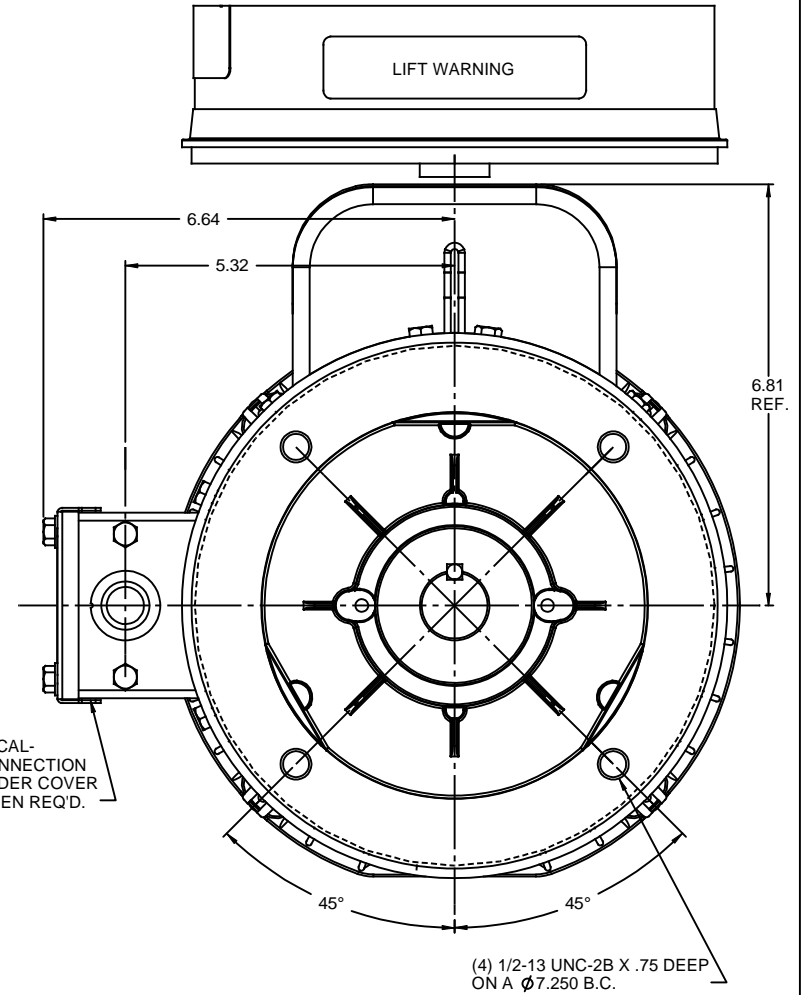
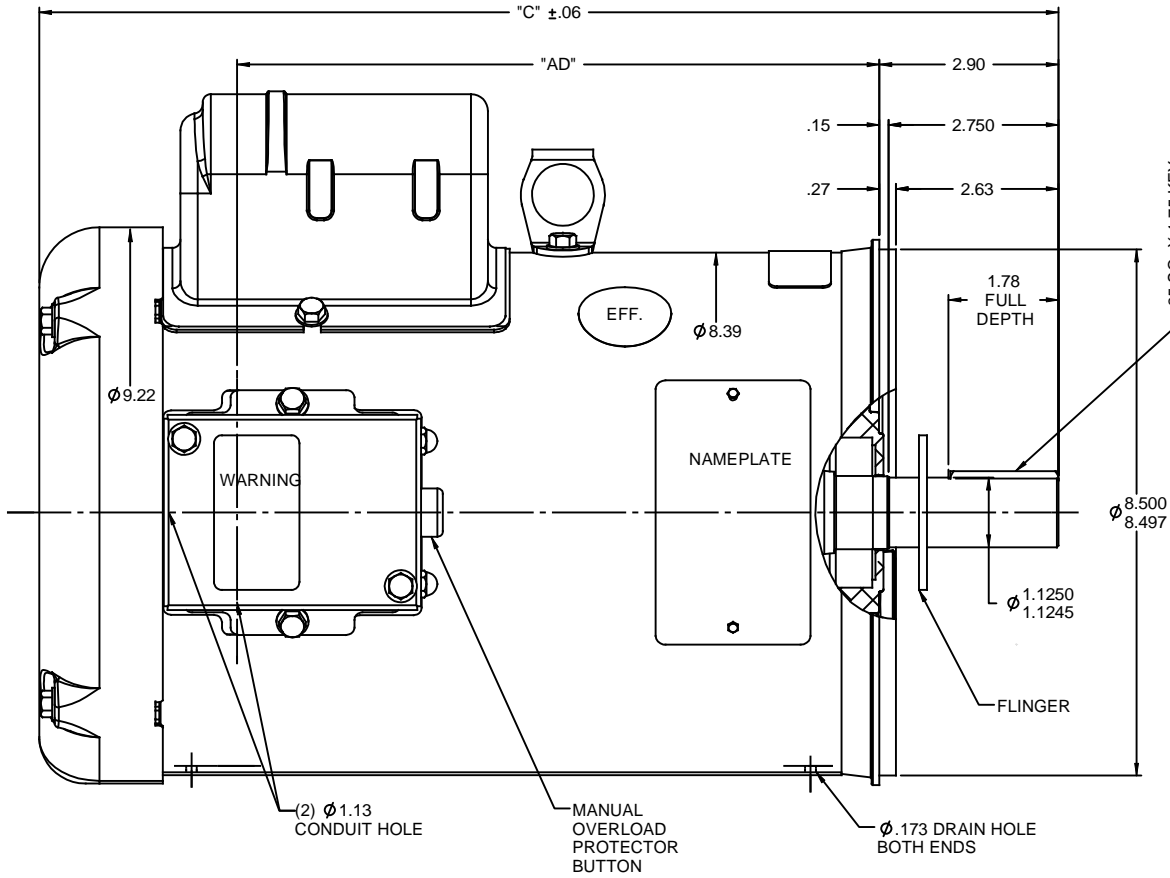
Nameplate Specifications

Output HP	5 Hp	Output KW	3.7 kW
Frequency	60 Hz	Voltage	230 V
Current	20.5 A	Speed	1740 rpm
Service Factor	1.15	Phase	1
Efficiency	82.5 %	Duty	Continuous
Insulation Class	F	Design Code	L
KVA Code	H	Frame	184TC
Enclosure	Totally Enclosed Fan Cooled	Overload Protector	Manual
Ambient Temperature	40 °C	Drive End Bearing Size	6206
Opp Drive End Bearing Size	6205	UL	Recognized
CSA	Y	CE	N
IP Code	43		

Technical Specifications

Electrical Type	Capacitor Start Capacitor Run	Starting Method	Across The Line
Poles	4	Rotation	Selective Counterclockwise
Mounting	Round	Motor Orientation	HORIZONTAL
Drive End Bearing	BALL	Opp Drive End Bearing	BALL
Frame Material	Rolled Steel	Shaft Type	T
Overall Length	17.44 in	Frame Length	12.00 in
Shaft Diameter	1.125 in	Shaft Extension	2.75 in
Assembly/Box Mounting	F1 ONLY		
Outline Drawing	035379-1200	Connection Diagram	005056.03

RBC PROPRIETARY AND CONFIDENTIAL INFORMATION
 This document is the property of REGAL BELOIT CORPORATION ("RBC") including its subsidiaries and divisions and contains proprietary information of RBC. This document is loaned on the express condition that neither it nor the information contained therein shall be disclosed to others without the express written consent of RBC, and that the information shall be used by the recipient only as approved expressly by RBC. This document shall be returned to RBC upon its request. This document may be subject to certain restrictions under U.S. export control laws and regulations.



DASH NO.	"C"	"AD"
750	12.94	6.87
800	13.44	7.37
850	13.94	7.87
900	14.44	8.37
950	14.94	8.87
1000	15.44	9.37
1050	15.94	9.87
1100	16.44	10.37
1150	16.94	10.87
1200	17.44	11.37

MOTOR SPECIAL FEATURES
 GASKETS THROUGHOUT
 DRAIN HOLES IN FRAME (UNPLUGGED)
 MANUAL RESET OVERLOAD BUTTON
 DOUBLE SEALED BALL BEARINGS
 FLINGER

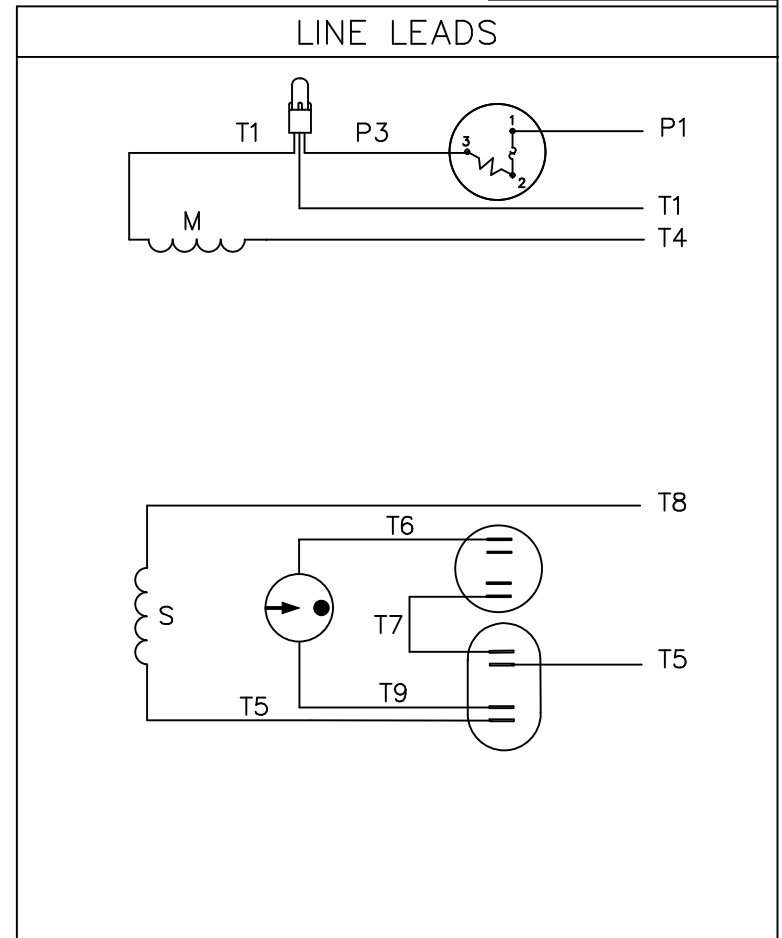
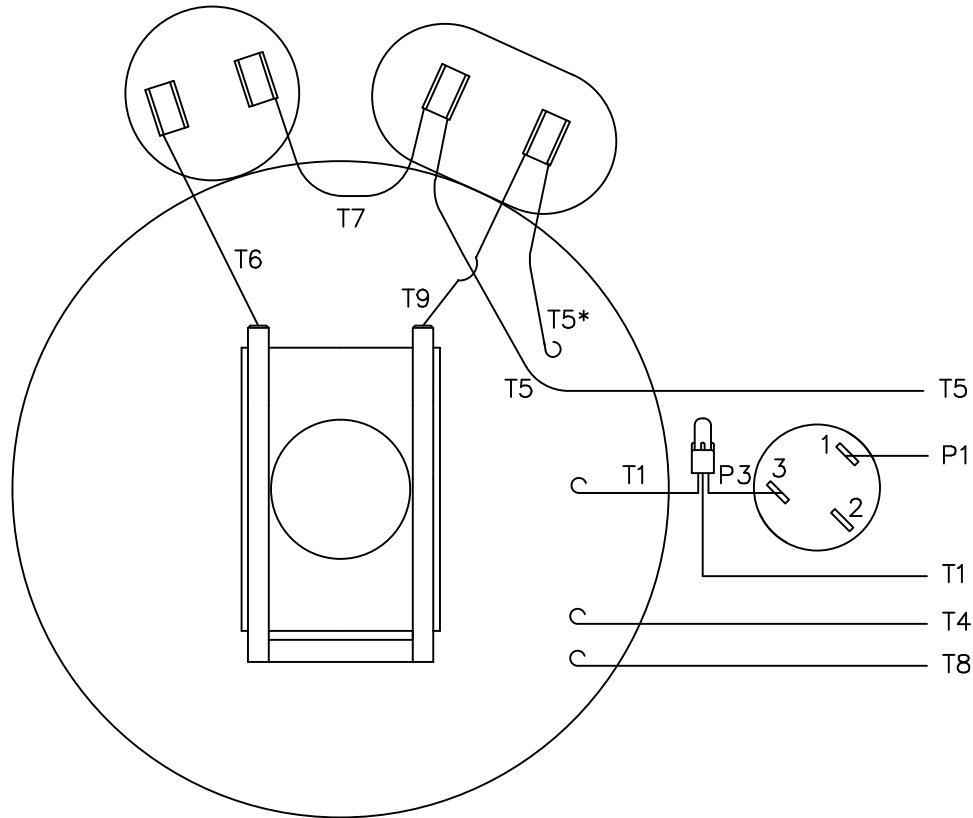
MAXIMUM FACE RUNOUT TO BE .004 T.I.R.
 MAXIMUM PILOT ECCENTRICITY TO BE .004 T.I.R.
 PERMISSIBLE SHAFT RUNOUT TO BE .002 T.I.R.

REVISION		BY & DATE	CHK	ANG	FINISH	SIZE	DRAWING NO	REV
- UPDATED & REDRAWN ON SOLIDWORKS		LST 11/11/2009	XX	XXX	±.0005	B	035379	-
NO			RFP		PREV			
THIRD ANGLE PROJECTION								
					NETWORK FILE NAME			

TOLERANCES UNLESS SPECIFIED:
 DEC INCHES
 X ±.1
 .XX ±.01
 .XXX ±.005
 .XXX ±.0005
REGAL BELOIT CORPORATION
 DRAWN PG 10/28/97
 CHK RK 10/28/97
 APPR
 SCALE 1:2
 REF 035222
 FMF


TITLE OUTLINE - 180TC FRAME
 TEFC - "C" FACE
 MATL FARM DUTY MOTOR
 PAGE OF

VIEW FROM OUTSIDE OF MOTOR AT SWITCH END.



ROTATION FACING LEAD END	L1	L2	JOIN
C.C.W.	P1	T4, T5	T1, T8
C.W.	P1	T4, T8	T1, T5

* THIS LEAD MAY BE WHITE

			TOLERANCES UNLESS SPECIFIED		 ELECTRIC MOTORS GEARMOTORS AND DRIVES	DRAWN WLW 08/30/76 CHK WRK 09/24/76 APPD
			DEC.	INCHES		SCALE 1=1
			.X	±.1		REF
08	ALTERNATE T5 LEAD MARKING WAS RED	RLW 8/6/02	.XX	±.01	TITLE	EXTERNAL WIRING DIAGRAM TYPE "K" W/ PROTECTOR
07	ADDED ALTERNATE T5 LEAD MARKING	RLW 5/31/02	KH	.XXX ±.005	MAT'L.	DECAL - 004015
06	REDRAWN TO CAD	DBT 5/31/02		.XXXX ±.0005	FINISH	
NO.	REVISION	BY & DATE	CHK	ANG ±1/2'		
THIS DRAWING IN DESIGN AND DETAIL IS OUR PROPERTY AND MUST NOT BE USED EXCEPT IN CONNECTION WITH OUR WORK ALL RIGHTS OF DESIGN AND INVENTION ARE RESERVED THIS IS AN ELECTRONICALLY GENERATED DOCUMENT - DO NOT SCALE THIS PRINT			RFP		CAD FILE	00505603
			DIST	BRF-NLV	SIZE	A
					DRAWING NO.	005056-03
					REV.	08

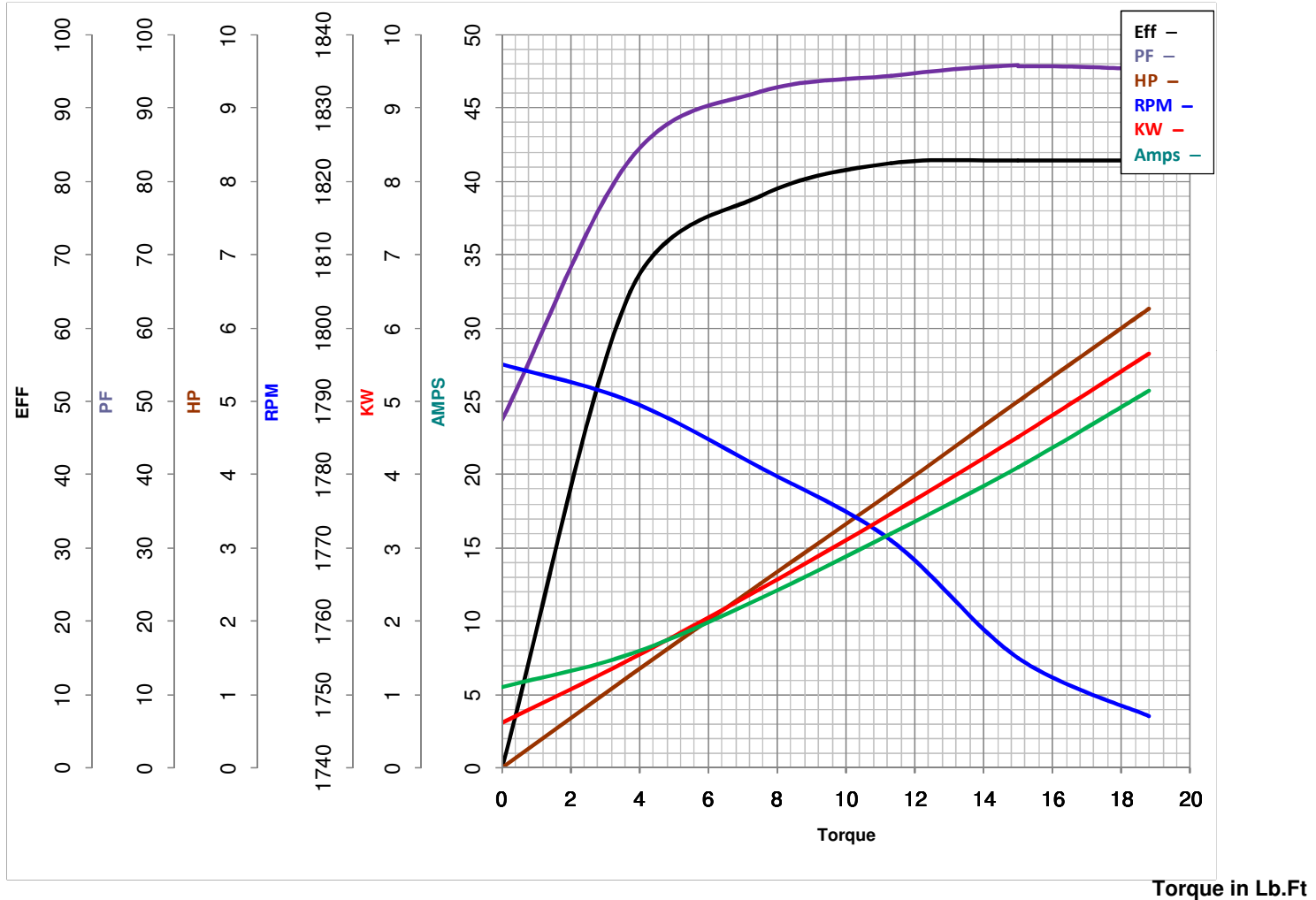


LEESON ELECTRIC CORPORATION
TYPICAL PERFORMANCE CURVE for AC MOTOR

Model No 131602.00

Catalog No 131602.00

Curve at 230 Volts HP 5.00 PHASE 1
60 HZ
5 HP VOLTS 230
HZ 60 RPM 1740



FL TORQUE 15 Lb.Ft
 BD TORQUE 35.5 Lb.Ft
 LR TORQUE 43.5 Lb.Ft

FL AMPS 20.5
 PU TORQUE 26.5 Lb.Ft
 LR AMPS 150

WINDING K8483-2

Date 7/17/2018