

PRODUCT INFORMATION PACKET



Model No: P184C17FC5C

Catalog No: 131603.00

..3HP..1740RPM.184TC.TEFC./230V.1PH.60HZ.CONT.40C.1.15SF.C FACE.P184C17FC5C.....AG - FARM
DUTY/GENERAL PURPOSE.MANUAL.....

Agricultural



Regal and Leeson are trademarks of Regal Beloit Corporation or one of its affiliated companies.

©2018 Regal Beloit Corporation, All Rights Reserved. MC017097E



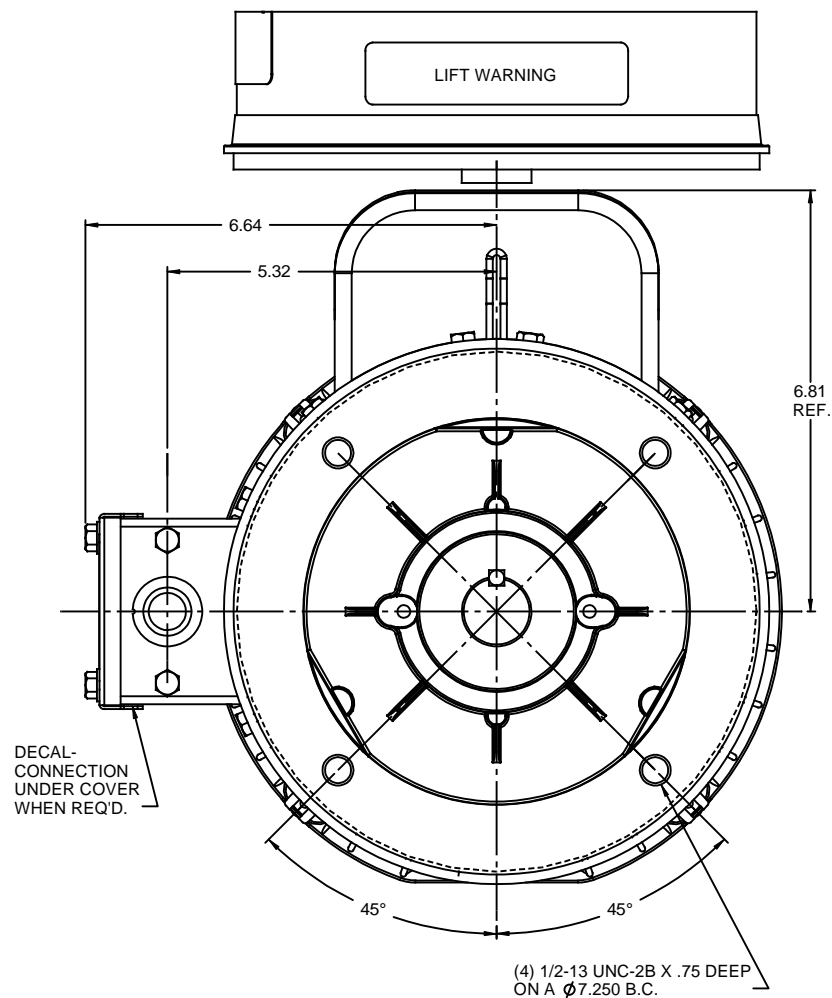
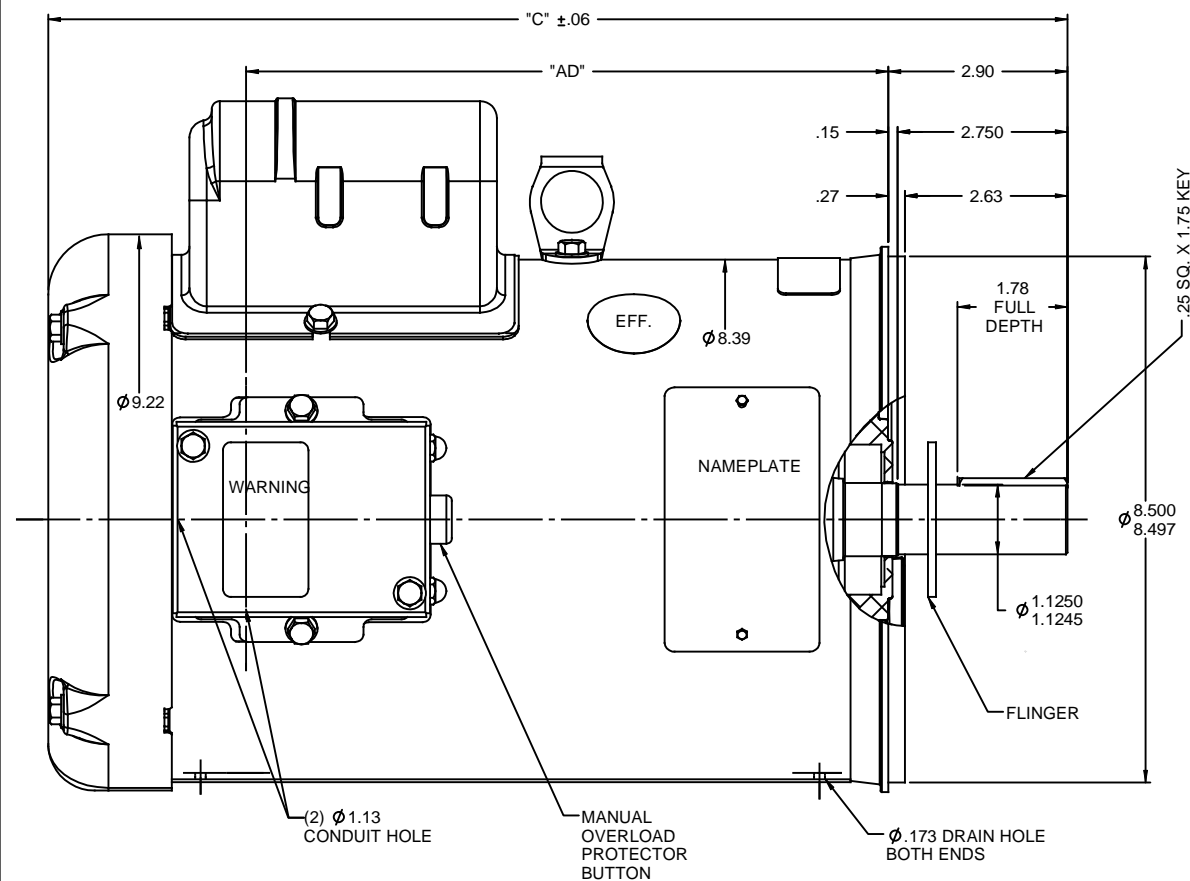


Nameplate Specifications

Output HP	3 Hp	Output KW	2.2 kW
Frequency	60 Hz	Voltage	230 V
Current	19.0 A	Speed	1740 rpm
Service Factor	1.15	Phase	1
Efficiency	75.5 %	Duty	Continuous
Insulation Class	F	Design Code	L
KVA Code	K	Frame	184TC
Enclosure	Totally Enclosed Fan Cooled	Overload Protector	Manual
Ambient Temperature	40 °C	Drive End Bearing Size	6206
Opp Drive End Bearing Size	6205	UL	Recognized
CSA	Y	CE	N
IP Code	43		

Technical Specifications



Electrical Type	Capacitor Start Induction Run	Starting Method	Across The Line
Poles	4	Rotation	Selective Counterclockwise
Mounting	Round	Motor Orientation	HORIZONTAL
Drive End Bearing	BALL	Opp Drive End Bearing	BALL
Frame Material	Rolled Steel	Shaft Type	T
Overall Length	16.44 in	Frame Length	11.00 in
Shaft Diameter	1.125 in	Shaft Extension	2.75 in
Assembly/Box Mounting	F1 ONLY		
Outline Drawing	035379-1100	Connection Diagram	005110.01



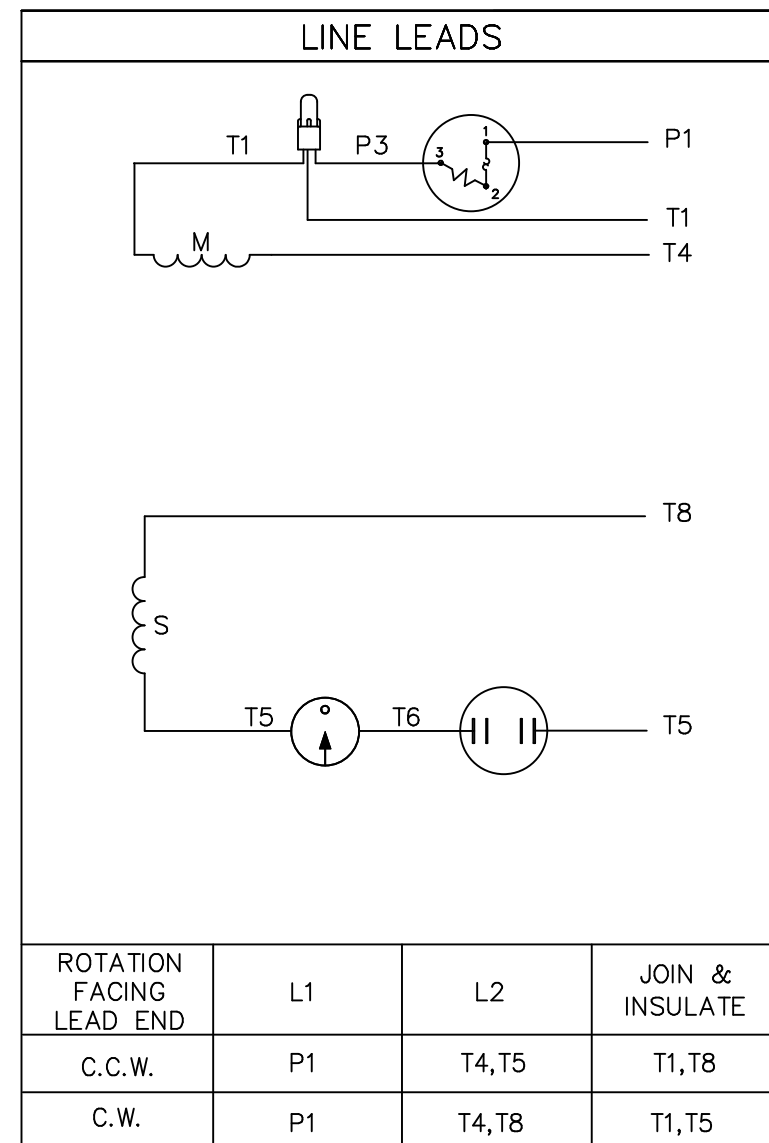
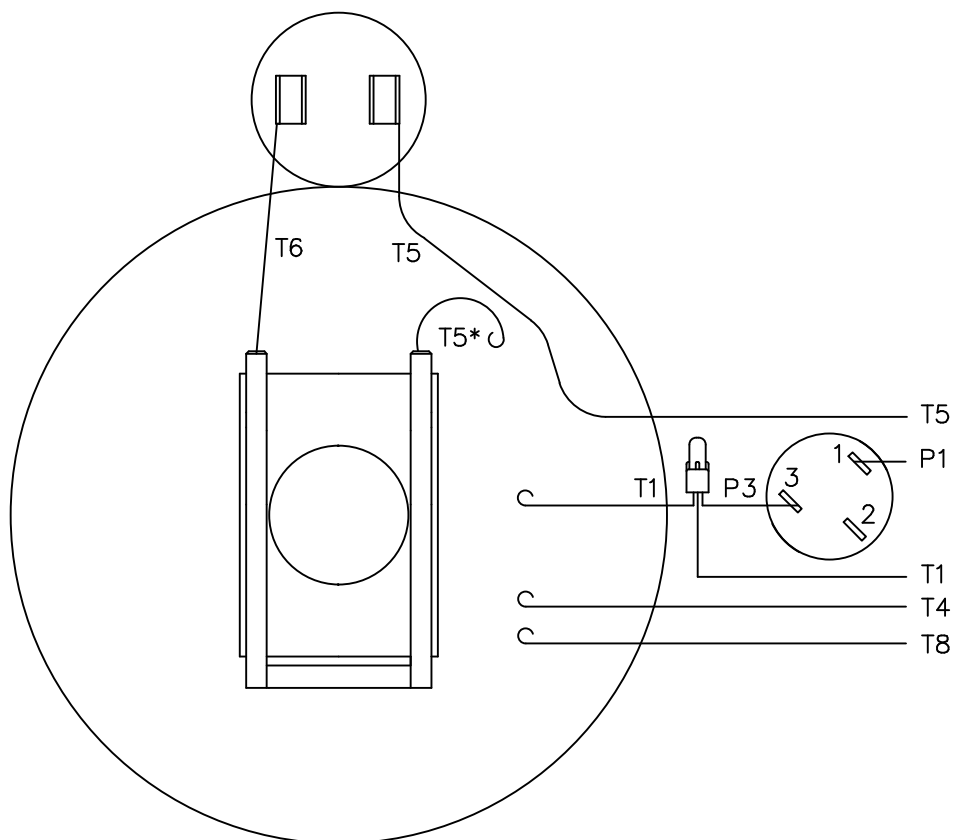
MOTOR SPECIAL FEATURES
GASKETS THROUGHOUT
DRAIN HOLES IN FRAME (UNPLUGGED)
MANUAL RESET OVERLOAD BUTTON
DOUBLE SEALED BALL BEARINGS
FLINGER

DASH NO.	"C"	"AD"
750	12.94	6.87
800	13.44	7.37
850	13.94	7.87
900	14.44	8.37
950	14.94	8.87
1000	15.44	9.37
1050	15.94	9.87
1100	16.44	10.37
1150	16.94	10.87
1200	17.44	11.37


MAXIMUM FACE RUNOUT TO BE .004 T.I.R.
MAXIMUM PILOT ECCENTRICITY TO BE .004 T.I.R.
PERMISSIBLE SHAFT RUNOUT TO BE .002 T.I.R.

						 REGAL-BELOIT CORPORATION				DRAWN PG 10/28/97		
					DEC	INCHES				CHK RK 10/28/97		
					X	±.1				APPR		
					XX	±.01				SCALE 1:2		
					XXX	±.005				REF 035222		
-	UPDATED & REDRAWN ON SOLIDWORKS			LST 11/11/2009	XX	XXXX	±.0005				MATL FARM DUTY MOTOR	
NO	REVISION			BY DATE	CHK	ANG	±1/2°				FINISH	PAGE OF
THIRD ANGLE PROJECTION 					RFP	PREV					SIZE B DRAWING NO 035379	REV
					NETWORK FILE NAME							

VIEW FROM OUTSIDE OF MOTOR AT SWITCH END.



* THIS LEAD MAY BE WHITE

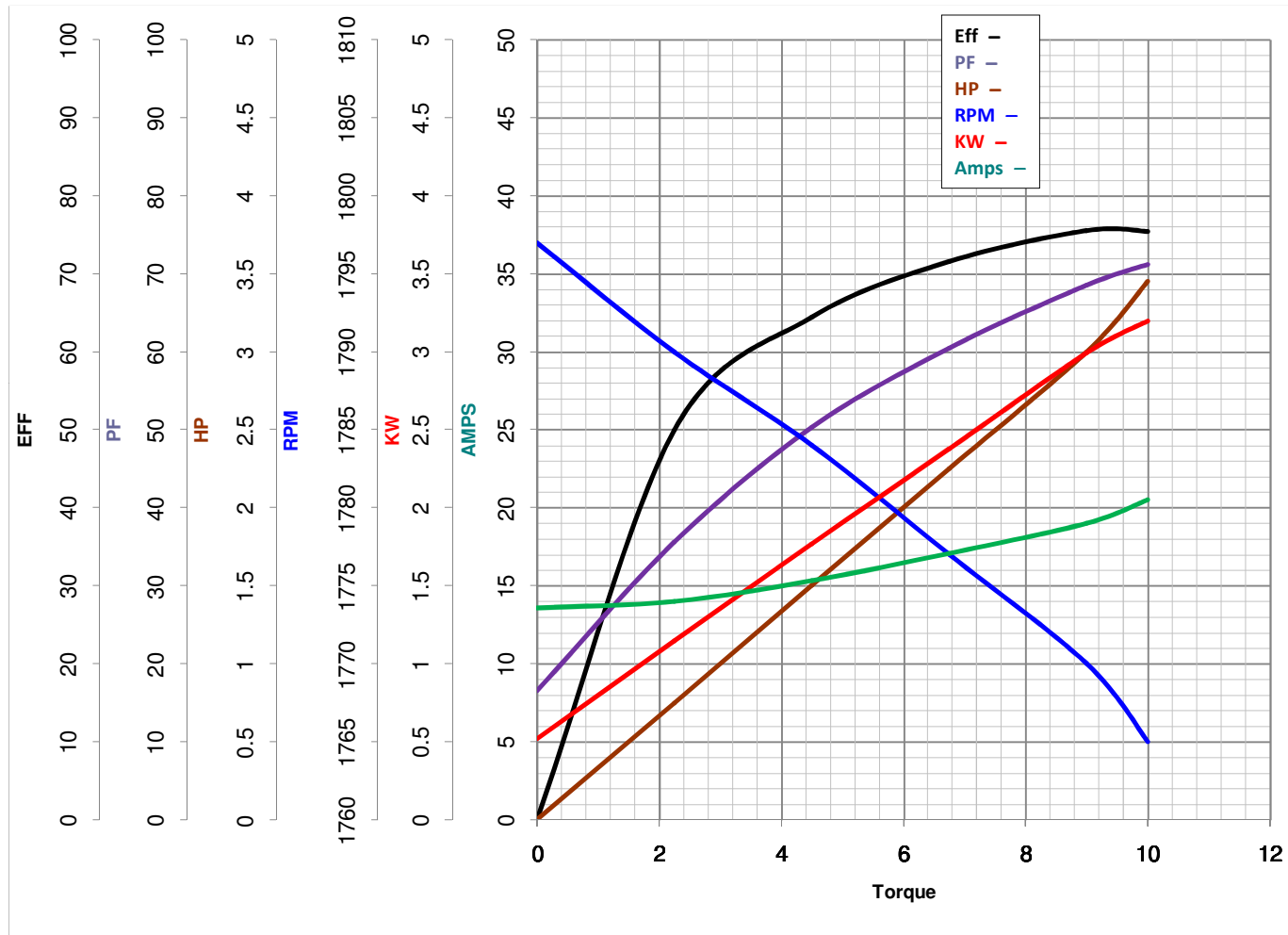
				TOLERANCES UNLESS SPECIFIED			ELECTRIC MOTORS GEARMOTORS AND DRIVES		DRAWN JRW 10/21/75	
				DEC.	INCHES		CHK	TEM		
10	ALTERNATE T5 LEAD MARKING WAS RED	RLW	8/6/02	.X	±.1	TITLE EXTERNAL WIRING DIAGRAM TYPE "C" W/ PROTECTOR	APPD	10/23/75		
09	ADDED ALTERNATE T5 LEAD MARKING	RLW	6/5/02	KH	.XX		SCALE	1=1		
08	ADDED MISSING "T4" LEAD FROM EB VIEW	DBT	09/22/97	PG	.XXX		REF	005105		
07	REDRAWN ON CAD	DBT	06/24/97		.XXXX		FMF	W-C63236-2		
NO.	REVISION	BY & DATE	CHK	ANG	±1/2"	FINISH	PREV			
THIS DRAWING IN DESIGN AND DETAIL IS OUR PROPERTY AND MUST NOT BE USED EXCEPT IN CONNECTION WITH OUR WORK ALL RIGHTS OF DESIGN AND INVENTION ARE RESERVED THIS IS AN ELECTRONICALLY GENERATED DOCUMENT - DO NOT SCALE THIS PRINT			RFP		CAD FILE		00511001	SIZE	DRAWING NO.	REV
			DIST NLV				A	005110-01	10	



LEESON ELECTRIC CORPORATION

TYPICAL PERFORMANCE CURVE for AC MOTOR

Model No 131603.00Curve at 230
60
3Volts
HZ
HPHP 3.00

VOLTS 230PHASE 1Catalog No 131603.00HZ 60RPM 1740

Torque in Lb.Ft

FL TORQUE 9 Lb.Ft
 BD TORQUE 27.9 Lb.Ft
 LR TORQUE 37.45 Lb.Ft

FL AMPS 19
 PU TORQUE 23.5 Lb.Ft
 LR AMPS 136

WINDING C8429-2

Date 3/26/2018