

PRODUCT INFORMATION PACKET



Model No: P14K17FK14 B
Catalog No: 131857.00
3HP..1750RPM.184.TEFC./V.1PH.60HZ.CONT.MANUAL.40C.1.15SF.RIGID.PRESSURE
WASHER.184TBFR7749AP
Totally Enclosed Fan Cooled (TEFC)



Regal and Leeson are trademarks of Regal Beloit Corporation or one of its affiliated companies.
©2018 Regal Beloit Corporation, All Rights Reserved. MC017097E



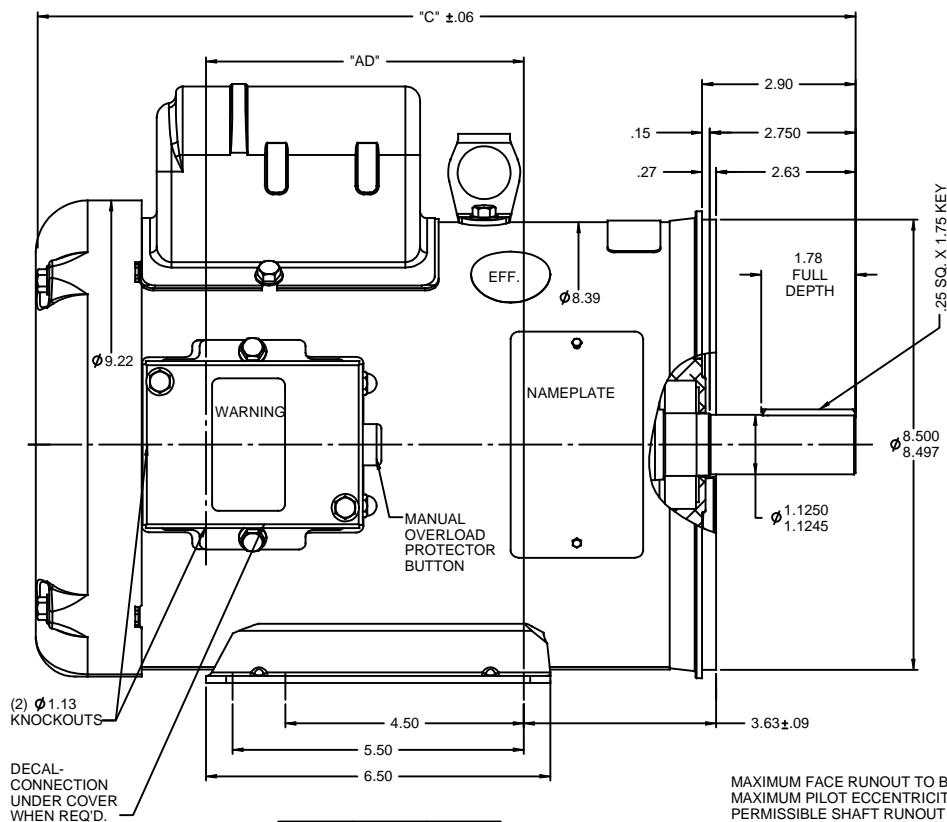


Nameplate Specifications

Output HP	3 Hp	Output KW	2.2 kW
Frequency	60 Hz	Voltage	230 V
Current	12.8 A	Speed	1755 rpm
Service Factor	1.15	Phase	1
Efficiency	81.5 %	Duty	Continuous
Insulation Class	F	Design Code	L
KVA Code	H	Frame	184TC
Enclosure	Totally Enclosed Fan Cooled	Overload Protector	Manual
Ambient Temperature	40 °C	Drive End Bearing Size	6206
Opp Drive End Bearing Size	6205	UL	Recognized
CSA	Y	CE	N
IP Code	43		

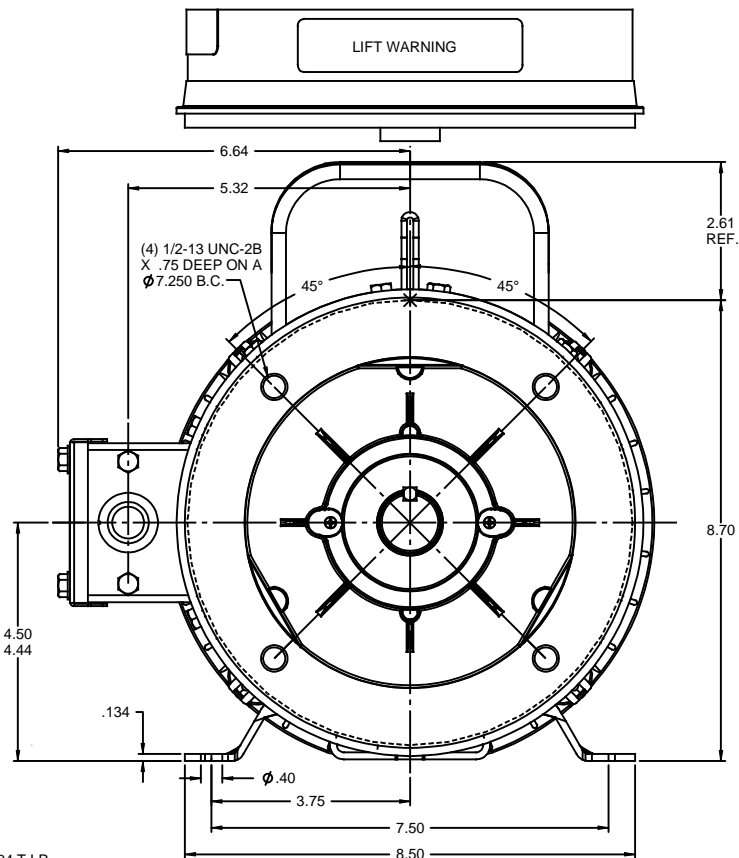
Technical Specifications



Electrical Type	Capacitor Start Capacitor Run	Starting Method	Across The Line
Poles	4	Rotation	Selective Counterclockwise
Mounting	Rigid base	Motor Orientation	HORIZONTAL
Drive End Bearing	BALL	Opp Drive End Bearing	BALL
Frame Material	Rolled Steel	Shaft Type	T
Overall Length	14.97 in	Frame Length	9.50 in
Shaft Diameter	1.125 in	Shaft Extension	2.75 in
Assembly/Box Mounting	F1 ONLY		
Outline Drawing	035381-950	Connection Diagram	005056.03



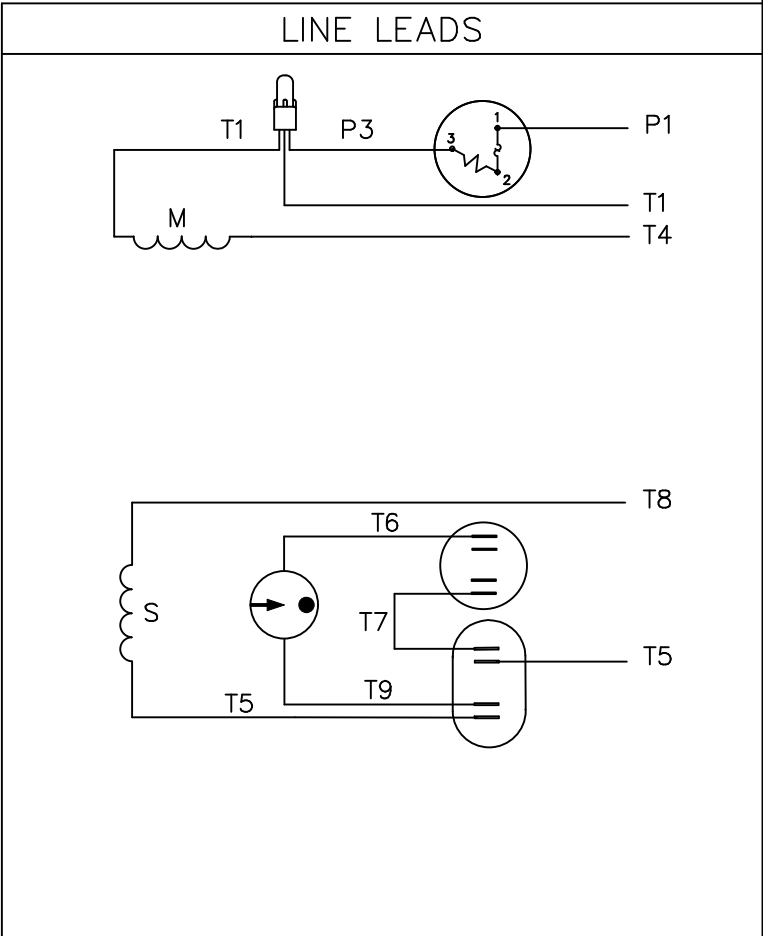
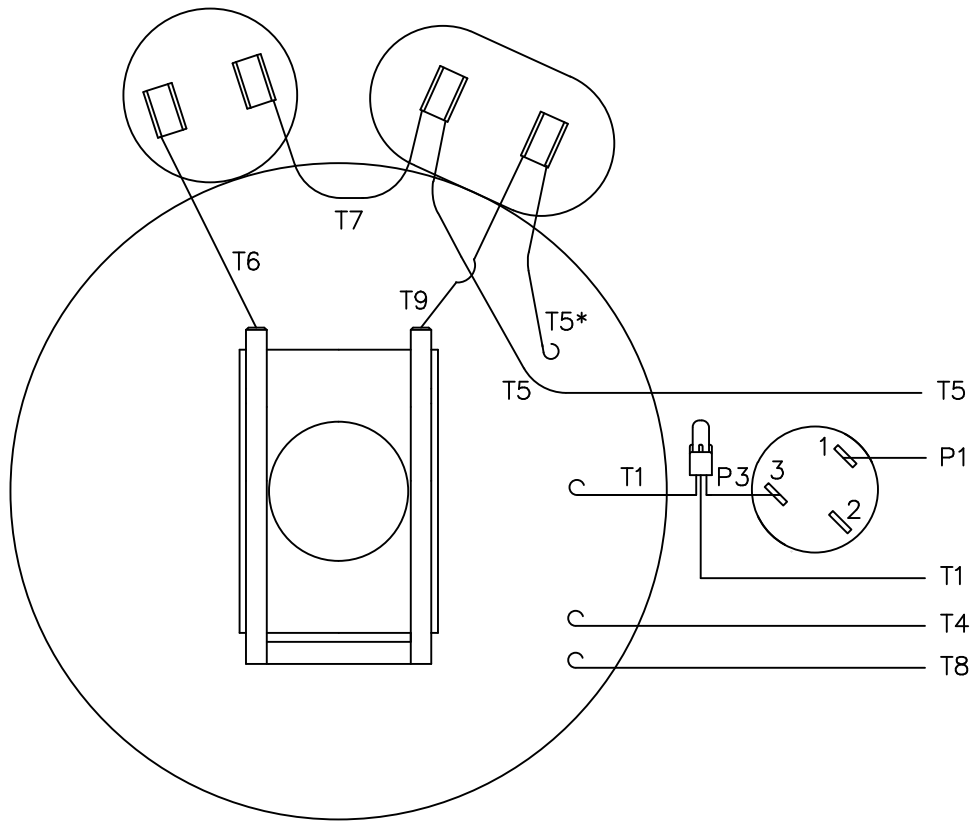
DASH NO.	"C"	"AD"
850	13.97	4.50
900	14.47	5.00
950	14.97	5.50
1000	15.47	6.00
1050	15.97	6.50
1100	16.47	7.00
1150	16.97	7.50
1200	17.47	8.00

MAXIMUM FACE RUNOUT TO BE .004 T.I.R.
MAXIMUM PILOT ECCENTRICITY TO BE .004 T.I.R.
PERMISSIBLE SHAFT RUNOUT TO BE .002 T.I.R.
GASKETS THROUGHOUT




				TOLERANCES UNLESS SPECIFIED		 REGAL-BELOIT CORPORATION		DRAWN PG 10/30/97	
				DEC INCHES				CHK RK 10/30/97	
				X ±.1					
				XX ±.03					
				XXX ±.005					
				XXX ±.0005		TITLE OUTLINE - 180TC FRAME		SCALE 1:2	
						TEFC - "C" FACE - RIGID "C"		REF 033178	
- UPDATE & REDRAWN IN SOLIDWORKS		LST 11/12/2009 XX		XXXX ±.0005		MATL W/ MANUAL PROTECTOR		FNF	
NO REVISION		BY & DATE		CHK ANG ±1/2"		FINISH		PAGE OF	
THIRD ANGLE PROJECTION 				RFP		PREV		DRAWING NO	
				NETWORK FILE NAME				B 035381	

VIEW FROM OUTSIDE OF MOTOR AT SWITCH END.



ROTATION FACING LEAD END	L1	L2	JOIN
C.C.W.	P1	T4,T5	T1,T8
C.W.	P1	T4,T8	T1,T5

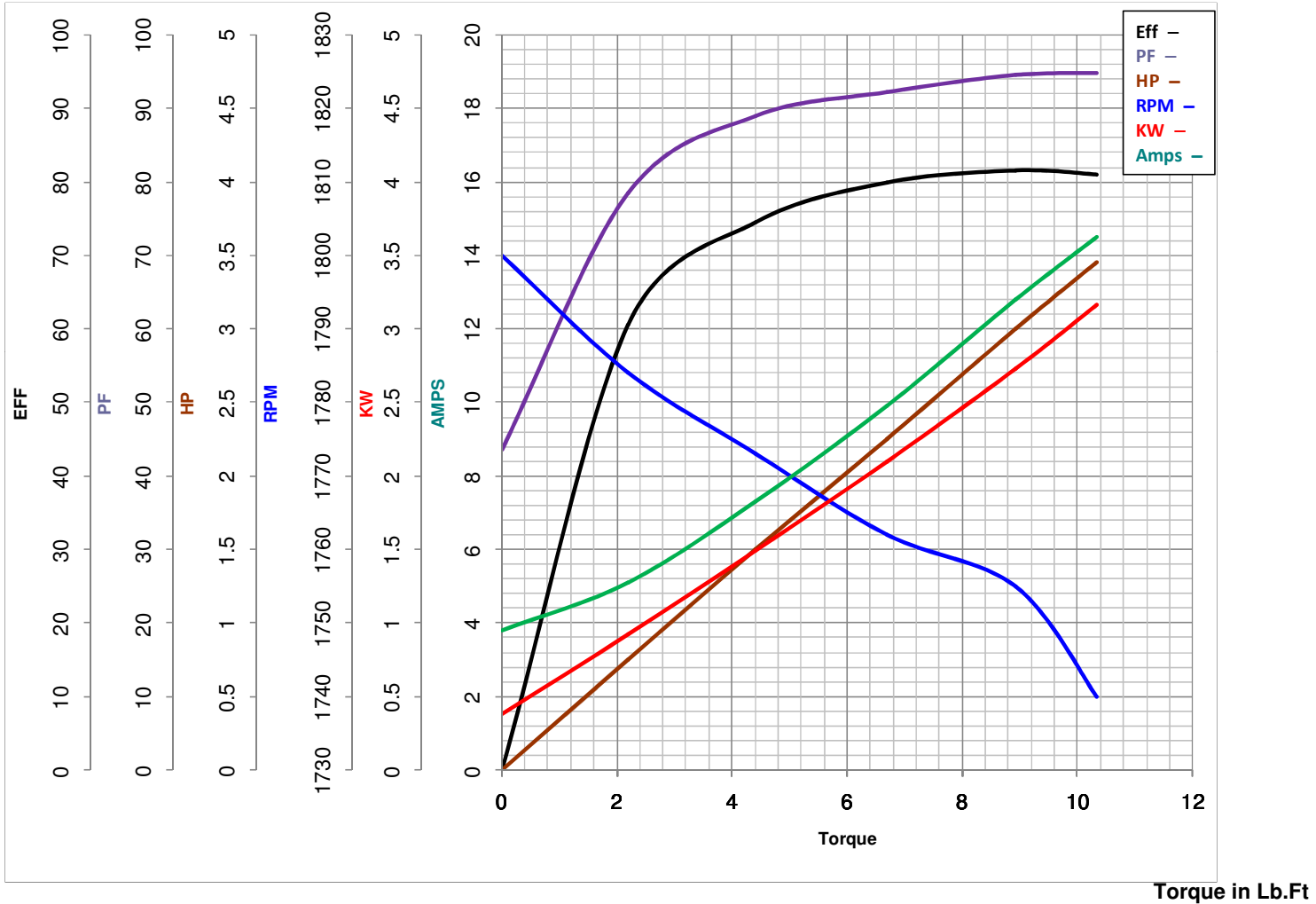
* THIS LEAD MAY BE WHITE

				TOLERANCES UNLESS SPECIFIED			ELECTRIC MOTORS GEARMOTORS AND DRIVES		DRAWN WLW 08/30/76	
				DEC.	INCHES				CHK WRK 09/24/76	
				.X	±.1				APPD	
08	ALTERNATE T5 LEAD MARKING WAS RED	RLW 8/6/02		.XX	±.01	TITLE EXTERNAL WIRING DIAGRAM TYPE "K" W/ PROTECTOR		SCALE 1=1		
07	ADDED ALTERNATE T5 LEAD MARKING	RLW 5/31/02	KH	.XXX	±.005			REF		
06	REDRAWN TO CAD	DBT 5/31/02		.XXXX	±.0005	MAT'L. DECAL – 004015		FMF 6K17FB4		
NO.	REVISION	BY & DATE	CHK	ANG	±1/2°	FINISH		PREV		
THIS DRAWING IN DESIGN AND DETAIL IS OUR PROPERTY AND MUST NOT BE USED EXCEPT IN CONNECTION WITH OUR WORK ALL RIGHTS OF DESIGN AND INVENTION ARE RESERVED THIS IS AN ELECTRONICALLY GENERATED DOCUMENT – DO NOT SCALE THIS PRINT			RFP		CAD FILE 00505603		SIZE	DRAWING NO.		REV.
			DIST BRF–NLV				A	005056–03		08



LEESON ELECTRIC CORPORATION

TYPICAL PERFORMANCE CURVE for AC MOTOR

Model No 131857.00Catalog No 131857.00Curve at 230
60
3Volts
HZ
HPHP 3.00VOLTS 230HZ 60PHASE 1RPM 1755

FL TORQUE 8.94 Lb.Ft
 BD TORQUE 23.5 Lb.Ft
 LR TORQUE 23.5 Lb.Ft

WINDING K8494-2

FL AMPS 12.8
 PU TORQUE 17.6 Lb.Ft
 LR AMPS 90

Date 4/19/2018