

PRODUCT INFORMATION PACKET



Model No: C213K34DB1A

Catalog No: 140680.00

..7 1/2HP..3520RPM.213T.DP.208-230V.1PH.60HZ.CONT.40C.1.15SF.RIGID.C213K34DB1A.....GENERAL
PURPOSE.NOT.....

Air Compressor



Regal and Leeson are trademarks of Regal Beloit Corporation or one of its affiliated companies.

©2018 Regal Beloit Corporation, All Rights Reserved. MC017097E





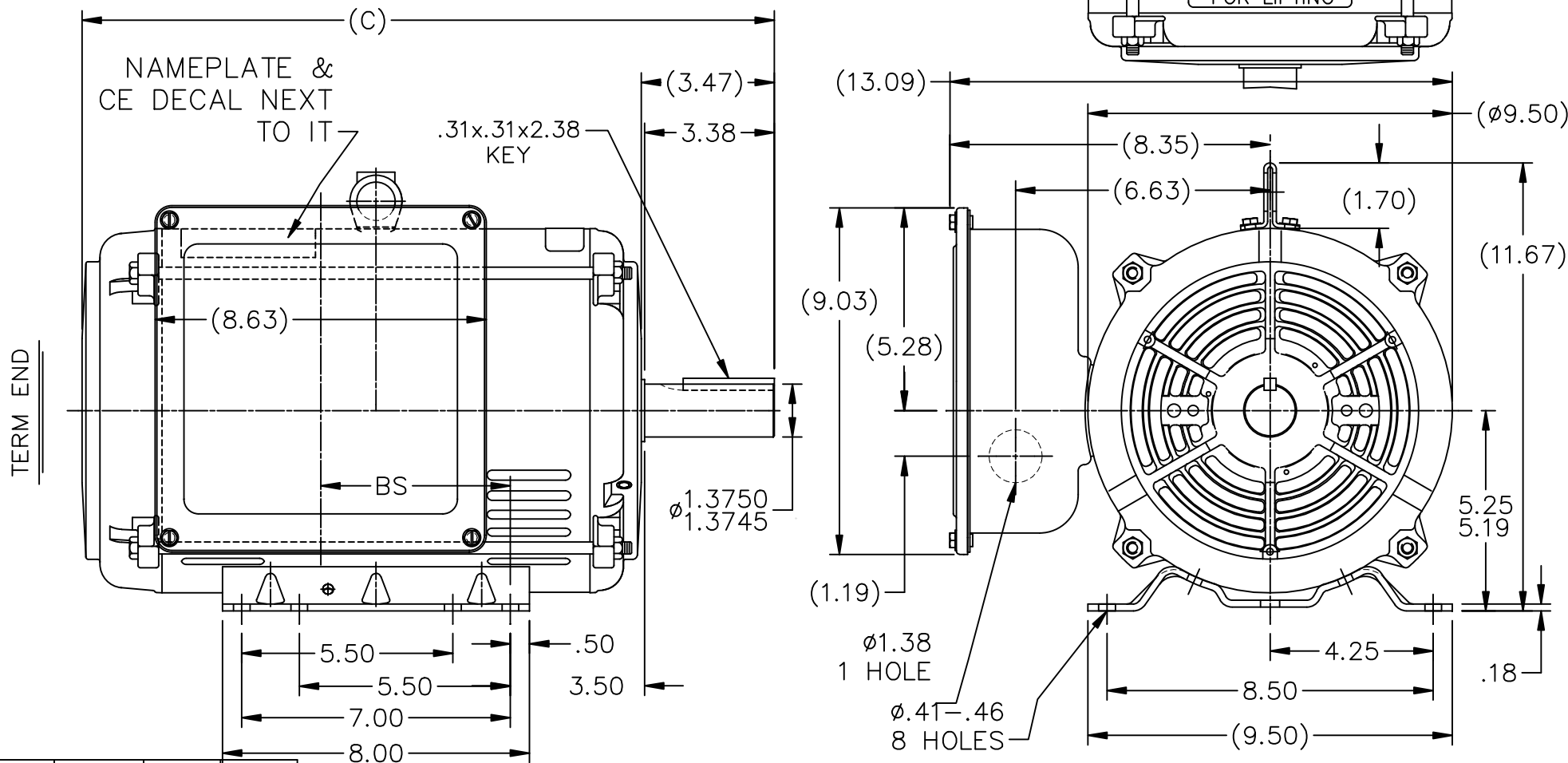
Nameplate Specifications

Output HP	7.50 Hp	Output KW	5.6 kW
Frequency	60 Hz	Voltage	208-230 V
Current	32.5-29.5 A	Speed	3520 rpm
Service Factor	1.15	Phase	1
Efficiency	87.5 %	Duty	Continuous
Insulation Class	F	Design Code	NO DESIGN CODE
KVA Code	H	Frame	213T
Enclosure	Drip Proof	Overload Protector	No
Ambient Temperature	40 °C	Drive End Bearing Size	307
Opp Drive End Bearing Size	206	UL	Recognized
CSA	Y	CE	Y
IP Code	22		

Technical Specifications


Electrical Type	Capacitor Start Capacitor Run	Starting Method	Across The Line
Poles	2	Rotation	Selective Counterclockwise
Mounting	Rigid base	Motor Orientation	HORIZONTAL
Drive End Bearing	BALL	Opp Drive End Bearing	BALL
Frame Material	Rolled Steel	Shaft Type	T
Overall Length	18.04 in	Frame Length	11.15 in
Shaft Diameter	1.375 in	Shaft Extension	3.38 in
Assembly/Box Mounting	F1 ONLY		
Outline Drawing	A-SS88686LE-1115	Connection Diagram	A-EE9048MF-LE

SS88686LE

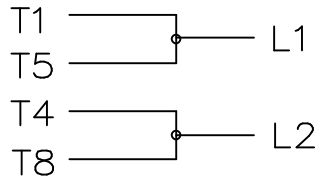


DASH	FR.	C	BS
965	213T	16.54	3.44
1115	213/15T	18.04	4.94
1240	215T	19.29	6.19

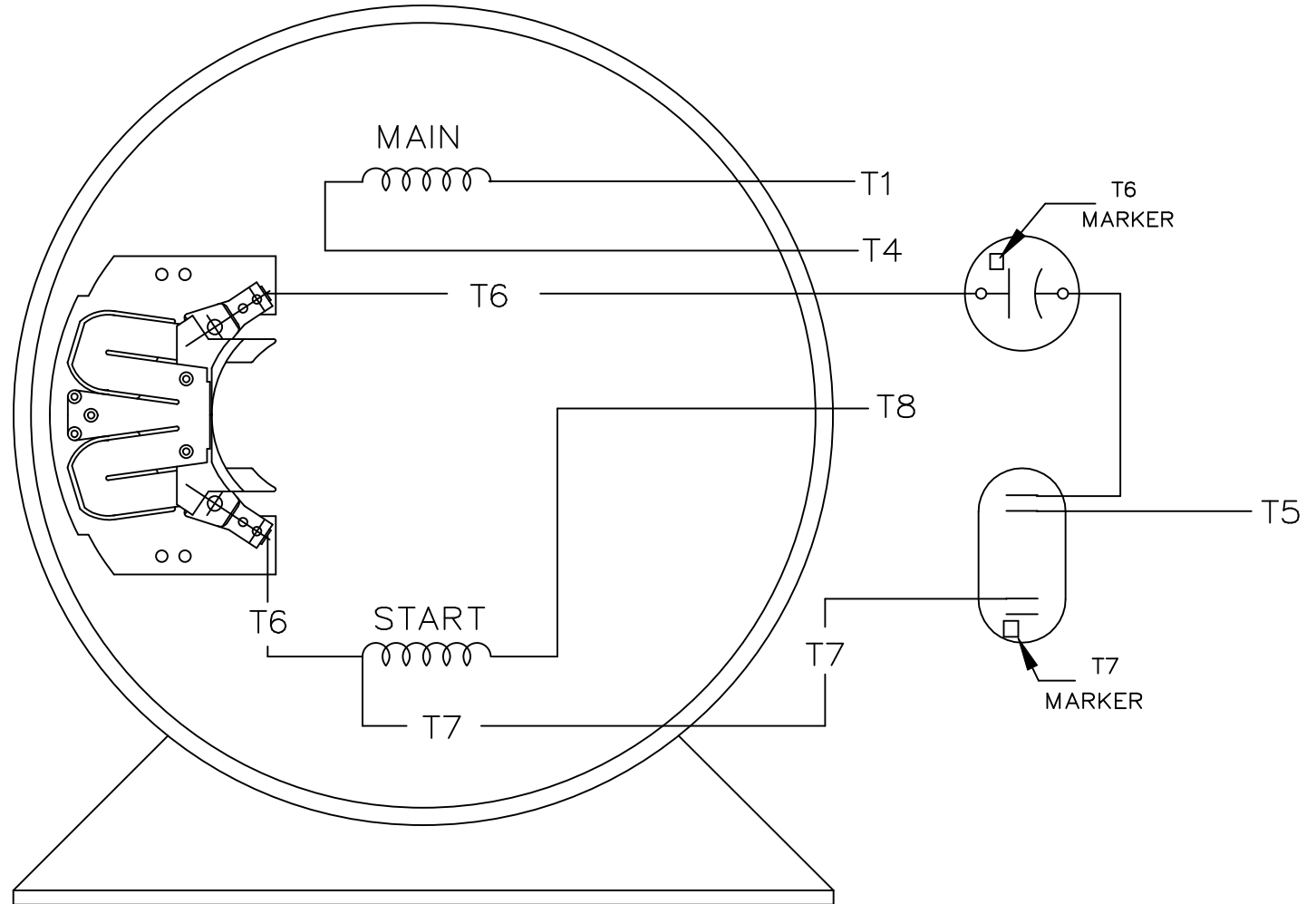
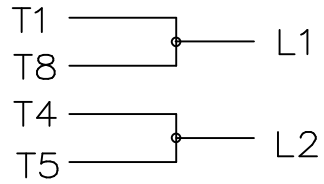
- NOTES:
 1. NAMEPLATE TO BE READ FROM C'BOX SIDE OF MOTOR.
 2. DASH 965 TO BE READ FROM OPPOSITE SHAFT END

				TOLERANCES UNLESS SPECIFIED			ELECTRIC MOTORS GEARMOTORS AND DRIVES	DRAWN RJM 07-26-2002			
				DEC.	INCHES			CHK	ML	08-05-2002	
				.X	±.1			APPD	JPL	08-02-2002	
				.XX	±.03	TITLE OUTLINE		SCALE	1=4		
2	ADDED NOTE 2	CN 31881	DRS 10-21-2002	ML	.XXX ±.005	210 FR. - DR. PR. - 1 PHASE		REF			
1	NEW DRAWING - DES/DEV		RJM 08-02-2002		.XXXX ±.0005	MAT'L.		FMF			
NO.	REVISION		BY & DATE	CHK	ANG ±7'30"	FINISH		PREV			
THIS DRAWING IN DESIGN AND DETAIL IS OUR PROPERTY AND MUST NOT BE USED EXCEPT IN CONNECTION WITH OUR WORK ALL RIGHTS OF DESIGN AND INVENTION ARE RESERVED THIS IS AN ELECTRONICALLY GENERATED DOCUMENT - DO NOT SCALE THIS PRINT				RFP	CAD FILE ss88686le			SIZE	DRAWING NO.	PAGE OF	REV.
				DIST	LB			A	SS88686LE		2

C.W. ROTATION




C.C.W. ROTATION



SINGLE VOLTAGE
CAPACITOR START
CAPACITOR RUN
REVERSIBLE

VIEW OF TERMINAL END

				TOLERANCES UNLESS SPECIFIED		 ELECTRIC MOTORS GEARMOTORS AND DRIVES	DRAWN RJM 07-25-2002		
				DEC.	INCHES		CHK		
				.X	±.1		APPD		
				.XX	±.02		SCALE 1=1		
				.XXX	±.005		REF		
1	NEW DRAWING - DES/DEV	RJM		.XXXX	±.0005	MAT'L.	FMF		
NO.	REVISION	BY & DATE	CHK	ANG	±7'30"	FINISH	PREV		
THIS DRAWING IN DESIGN AND DETAIL IS OUR PROPERTY AND MUST NOT BE USED EXCEPT IN CONNECTION WITH OUR WORK ALL RIGHTS OF DESIGN AND INVENTION ARE RESERVED THIS IS AN ELECTRONICALLY GENERATED DOCUMENT - DO NOT SCALE THIS PRINT				RFP	CAD FILE EE9048MF-LE		SIZE	DRAWING NO. PAGE OF	REV.
				DIST LB			A	EE9048MF-LE	1



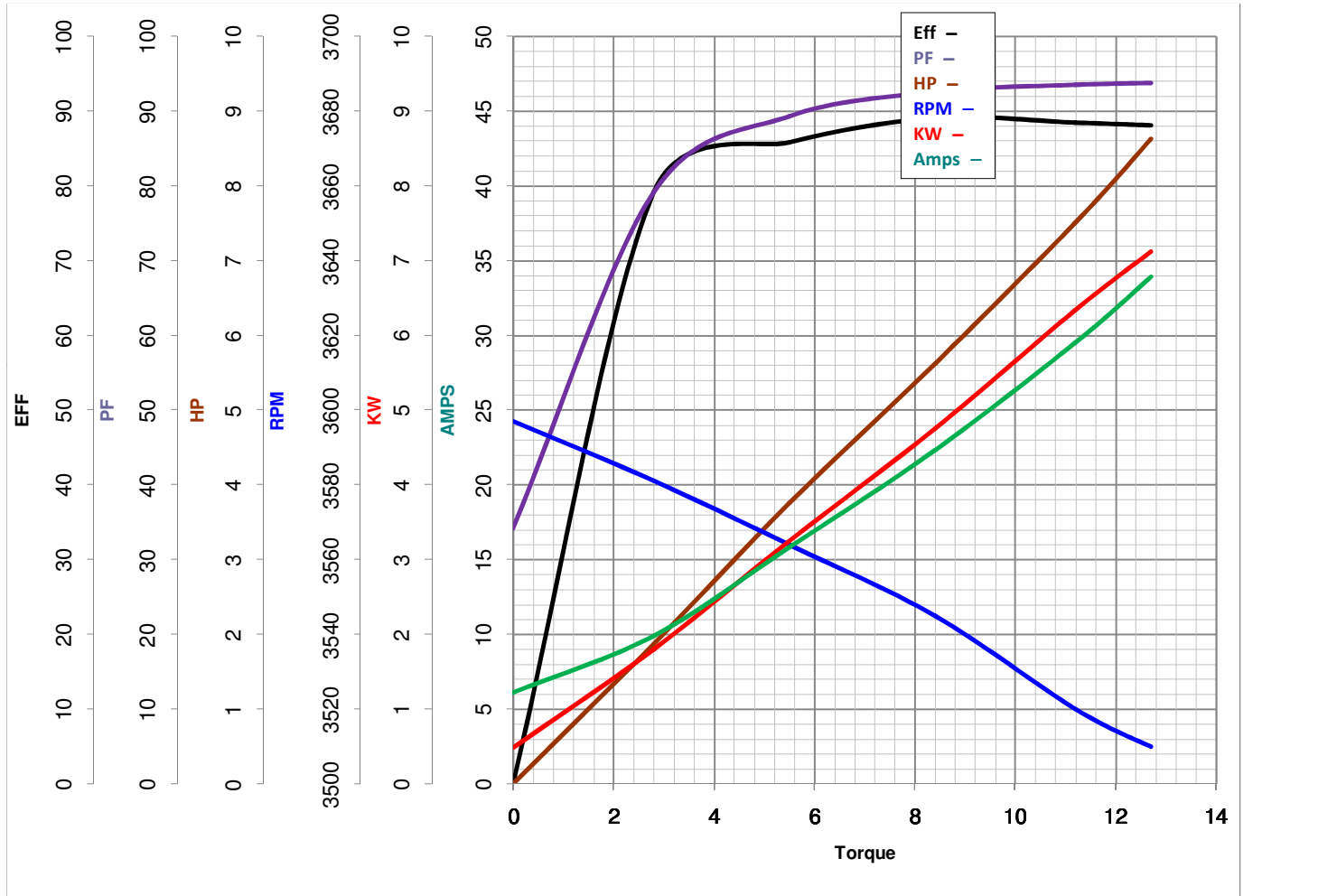
LEESON ELECTRIC CORPORATION
 TYPICAL PERFORMANCE CURVE for AC MOTOR

Model No 140680.00

Catalog No 140680.00

Curve at 230 Volts HP 7.50 PHASE 1
60 HZ
7.5 HP VOLTS 208-230

HZ 60 RPM 3520



Torque in Lb.Ft

FL TORQUE 11.2 Lb.Ft
 BD TORQUE 32.0 Lb.Ft
 LR TORQUE 362 Lb.Ft

FL AMPS 32.5-29.5
 PU TORQUE 25.3 Lb.Ft
 LR AMPS 223

WINDING BK10272-1

Date 3/21/2018