

PRODUCT INFORMATION PACKET



Model No: C145T17FB79AA

Catalog No: 171647.60

2HP..1750RPM.145T.TEFC.230/460V.3PH.60HZ.CONT.NOT.40C.1.15SF.RIGID..

Totally Enclosed Fan Cooled (TEFC)



Regal and Leeson are trademarks of Regal Beloit Corporation or one of its affiliated companies.

©2018 Regal Beloit Corporation, All Rights Reserved. MC017097E





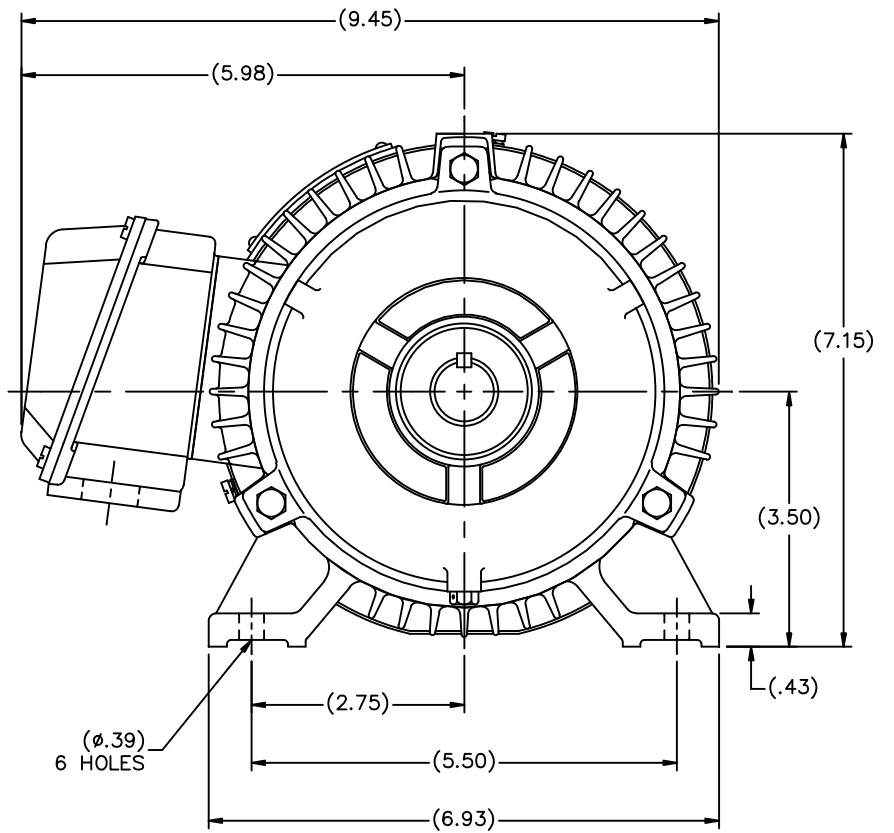
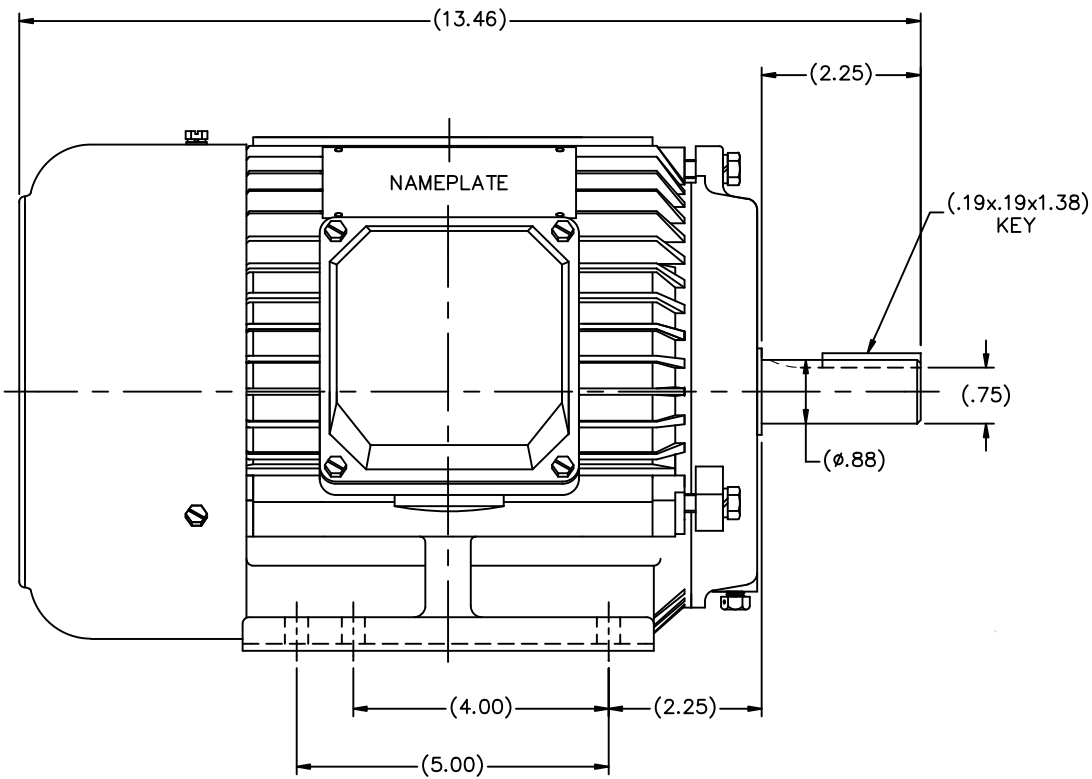
Nameplate Specifications

Output HP	2 Hp	Output KW	1.5 kW
Frequency	60 Hz	Voltage	208-230/460 V
Current	6.4-6.0/3.0 A	Speed	1745 rpm
Service Factor	1.15	Phase	3
Efficiency	86.5 %	Duty	Continuous
Insulation Class	F	Design Code	B
KVA Code	K	Frame	145T
Enclosure	Totally Enclosed Fan Cooled	Overload Protector	No
Ambient Temperature	40 °C	Drive End Bearing Size	6205
Opp Drive End Bearing Size	6205	UL	Recognized
CSA	Y	CE	Y
IP Code	43		

Technical Specifications

Electrical Type	Squirrel Cage Inverter Rated	Starting Method	Line Or Inverter
Poles	4	Rotation	Reversible
Mounting	Rigid base	Motor Orientation	HORIZONTAL
Drive End Bearing	BALL	Opp Drive End Bearing	BALL
Frame Material	Cast Iron	Shaft Type	T
Overall Length	13.46 in	Shaft Diameter	0.875 in
Shaft Extension	2.25 in	Assembly/Box Mounting	F1/F2 CAPABLE
Outline Drawing	SS622146	Connection Diagram	5010.01

This is an uncontrolled document once printed or downloaded and is subject to change without notice. Date Created: 10/15/2018



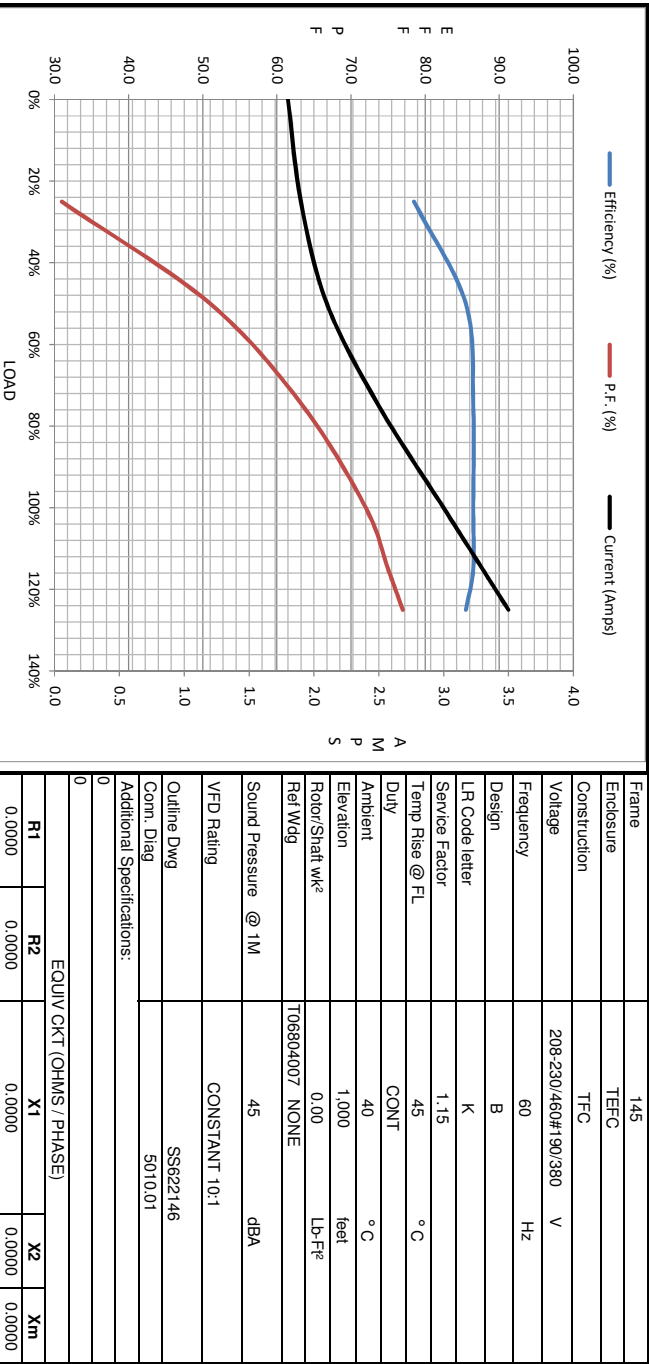
(DRAWING MAY NOT BE TO SCALE)

				TOLERANCES UNLESS SPECIFIED			DRAWN MSG 06-28-2006			
				DEC.	INCHES		CHK ML 06-28-2006			
				.X	±.1	APPD SB 06-28-2006	SCALE 5=8			
				.XX	±.03	REF	FMF MU75330			
				.XXX	±.005	PREV				
01	CHANGE CO FROM MARATHON TO RBC	ISAAC 10-3802	TF	10/5/2010	.XXXX	±.0005	MAT'L			
NO. REVISION				BY & DATE	CHK	ANG	±7'30"			
THIS DRAWING IN DESIGN AND DETAIL IS OUR PROPERTY AND MUST NOT BE USED EXCEPT IN CONNECTION WITH OUR WORK ALL RIGHTS OF DESIGN AND INVENTION ARE RESERVED THIS IS AN ELECTRONICALLY GENERATED DOCUMENT - DO NOT SCALE THIS PRINT				RFP	09-25-2006	CAD FILE	SS622146	SIZE B	DRAWING NO. SS622146	PAGE OF 01
				DIST	MAR-WA-WP					



Motor Load Data								
Load	0%	25%	50%	75%	100%	115%	125%	LR
Current (Amps)	1.80	1.90	2.10	2.50	3.0	3.3	3.5	21.2
Torque (ft-lb)	0.00	1.50	3.0	4.8	6.0	7.0	7.6	18.5
RPM	1800	1785	1775	1760	1745	1735	1725	0
Efficiency (%)		78.5	85.5	86.5	86.5	86.5	85.5	
P.F. (%)	6.5	31.0	51.0	63.5	72.0	75.0	77.0	54.5

Motor Speed Data						Information Block																				
Speed (RPM)	LR	Pull-Up	BD	Rated	Idle	HP	Sync. RPM	Frame	Enclosure	Construction	Voltage	Frequency	Design	LR Code letter	Service Factor	Temp Rise @ FL	Duty	Ambient	Elevation	Rotor/Shaft wk ²	Ref Wdg	Sound Pressure @ 1M	VFD Rating	Outline Dwg	Conn. Diag	Additional Specifications:
0		315	1285	1745	1800	2.0	1800	145	TEFC	TFC	208-230/460#190/380	60	B	K	1.15	45	CONT	40 °C	1,000	0.00	NONE	45	CONSTANT 10:1	SS622146	501001	
Current (Amps)	21.2	20.5	13.4	3.0	1.80																					
Torque (ft-lb)	18.5	16.0	21.1	6.0	0.00																					



R1	R2	X1	X2	Xm
0.0000	0.0000	0.0000	0.0000	0.0000

EQUIV CKT (OHMS / PHASE)

