

# PRODUCT INFORMATION PACKET



Model No: C6K17WK1A  
Catalog No: 191481.00  
1.5HP..1800RPM.56.TEFC./V.1PH.60HZ..NOT.40C..RIGID C..A  
Paint Free



Regal and Leeson are trademarks of Regal Beloit Corporation or one of its affiliated companies.  
©2018 Regal Beloit Corporation, All Rights Reserved. MC017097E





## Nameplate Specifications

Output HP	1.50 Hp	Output KW	1.1 kW
Frequency	60 Hz	Voltage	115/230 V
Current	15.8/7.9 A	Speed	1725 rpm
Service Factor	1.15	Phase	1
Efficiency	75 %	Duty	Continuous
Insulation Class	F	Design Code	N
KVA Code	K	Frame	56C
Enclosure	Totally Enclosed Fan Cooled	Overload Protector	No
Ambient Temperature	40 °C	Drive End Bearing Size	6205
Opp Drive End Bearing Size	6203	UL	Recognized
CSA	Y	CE	Y
IP Code	55		

## Technical Specifications

Electrical Type	Capacitor Start Capacitor Run	Starting Method	Across The Line
Poles	4	Rotation	Selective Counterclockwise
Mounting	Rigid base	Motor Orientation	HORIZONTAL
Drive End Bearing	BALL	Opp Drive End Bearing	BALL
Frame Material	Stainless Steel	Shaft Type	T
Overall Length	13.30 in	Frame Length	7.54 in
Shaft Diameter	0.625 in	Shaft Extension	1.88 in
Assembly/Box Mounting	F1 ONLY		
Outline Drawing	16999800	Connection Diagram	005054.01

EDS DATE

APPD:

DR BY:

DESCRIPTION

SCALE

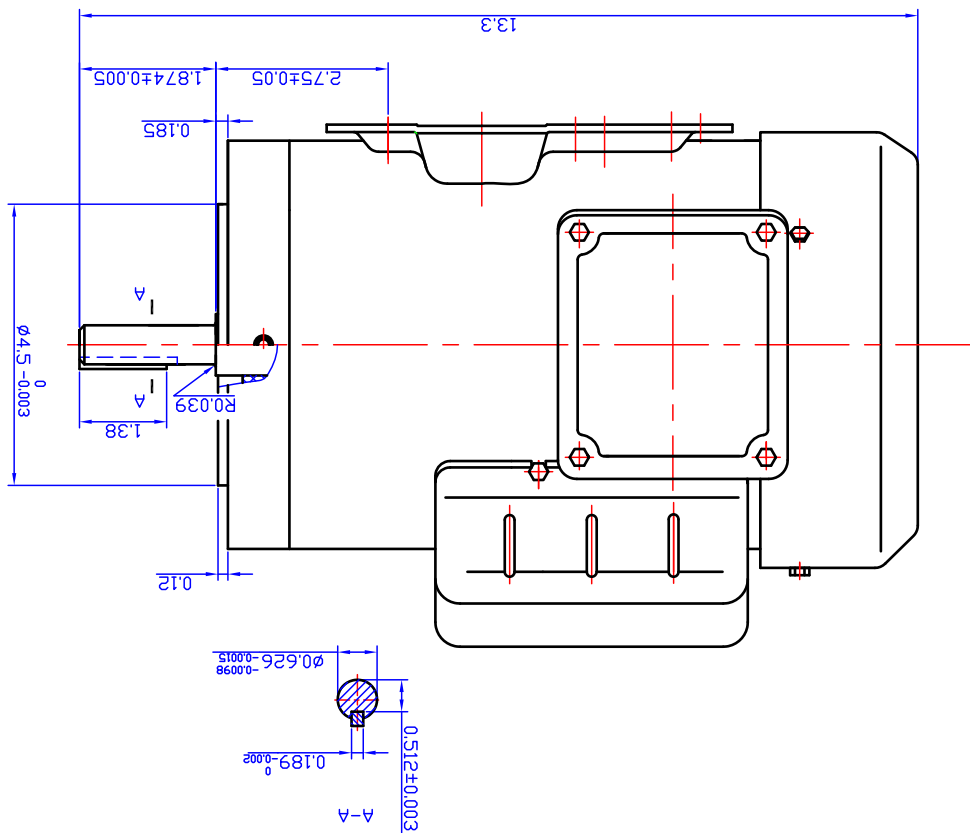
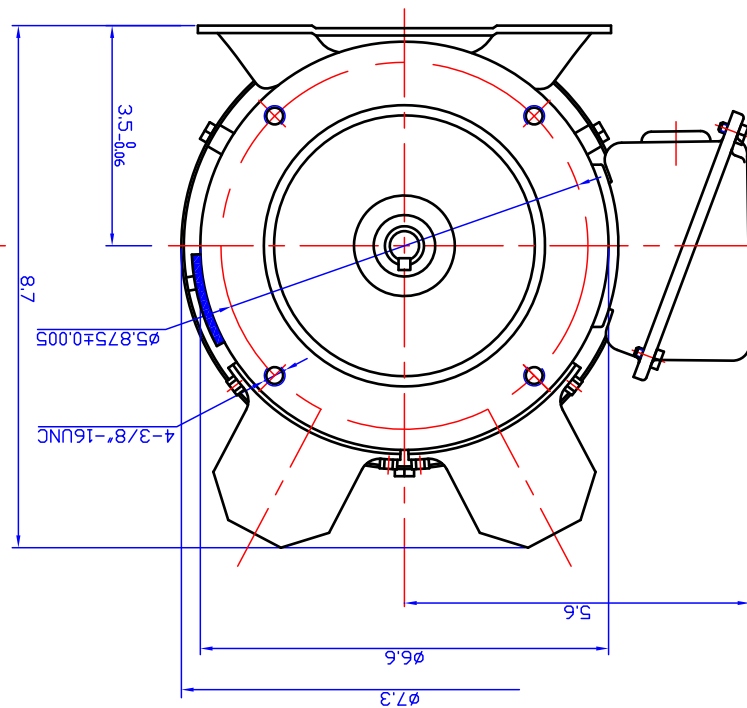
SIZE

ON GMD

SHEET

outline

MODEL NO.	FRAME	PH	HP	HZ	RPM	Pole	Volt	thermal protection
	56HC	3	1.5	60	1740	4	115/230	NONE



REV

ECO

Uncontrolled Copy

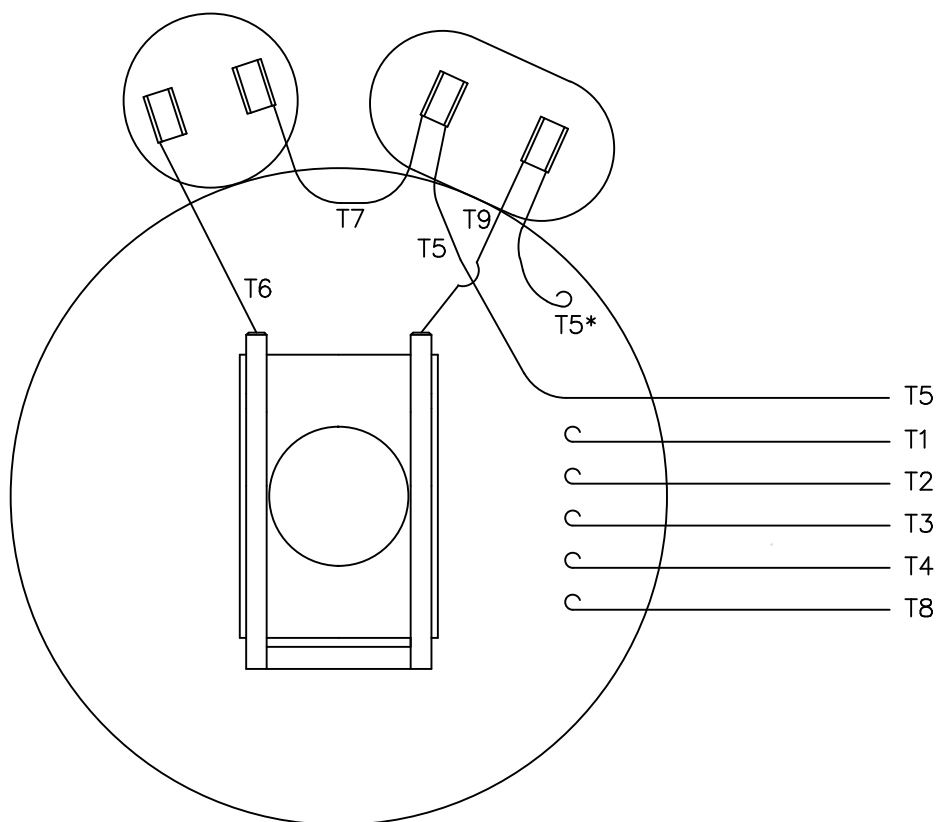
REV BY

DATE

AppD

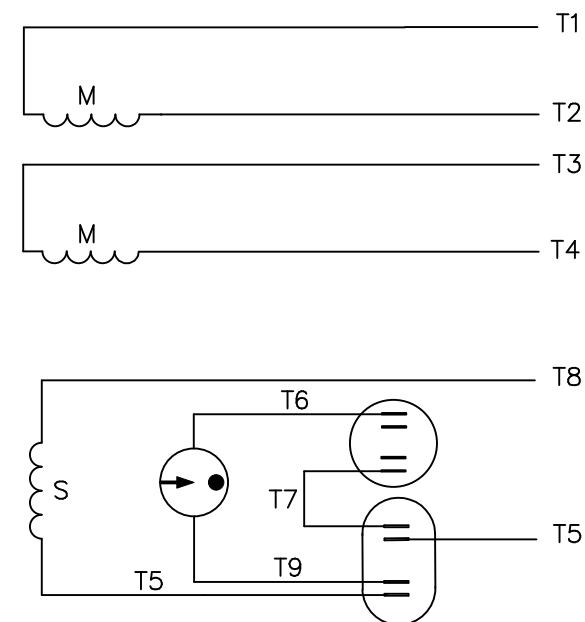
DATE \_\_\_\_\_

VIEW FROM OUTSIDE OF MOTOR AT SWITCH END.



\* THIS LEAD MAY BE WHITE

## LINE LEADS



	ROTATION FACING LEAD END	L1	L2	JOIN
HIGH VOLT	C.C.W.	T1	T4 T5	T2,T3 T8
	C.W.	T1	T4 T8	T2,T3 T5
LOW VOLT	C.C.W.	T1 T3,T8	T2,T4 T5	
	C.W.	T1,T3 T5	T2,T4 T8	

TOLERANCES  
UNLESS SPECIFIED

DEC. INCHES

.X ±.1

.XX ±.01

.XXX ±.005

.XXXX ±.0005

ANG ±1/2"

ELECTRIC MOTORS  
GEARMOTORS  
AND DRIVES

DRAWN JRW 09/27/74

CHK TEM

APPD 10/11/74

SCALE 1=1

REF A-005053

FMF W-K6343

PREV

11 ALTERNATE T5 LEAD MARKING WAS RED

RLW 8/6/02

.XX ±.01

10 ADDED ALTERNATE T5 LEAD MARKING

RLW 6/5/02

KH .XXX ±.005

09 REDRAWN TO CAD

DBT 05/28/97

.XXXX ±.0005

NO. REVISION

BY &amp; DATE

CHK ANG ±1/2"

TITLE

EXT. WIRING DIAGRAM  
TYPE "K" W/O PROTECTOR

MAT'L.

DECAL-004012

FINISH

THIS DRAWING IN DESIGN AND DETAIL IS OUR PROPERTY AND MUST NOT BE USED EXCEPT  
IN CONNECTION WITH OUR WORK ALL RIGHTS OF DESIGN AND INVENTION ARE RESERVED  
THIS IS AN ELECTRONICALLY GENERATED DOCUMENT - DO NOT SCALE THIS PRINT

RFP

CAD FILE 00505401

SIZE

A

DRAWING NO.

005054-01

REV.

11