

# PRODUCT INFORMATION PACKET



Model No: SSD4S10/15T6006YEH2

Catalog No: LM28867

10HP..1800RPM.215T.ODP.200V.3PH.60HZ.ELEVATOR.NOT.40C.1.0.RIGID..  
Elevator Duty



Regal and Leeson are trademarks of Regal Beloit Corporation or one of its affiliated companies.

©2018 Regal Beloit Corporation, All Rights Reserved. MC017097E





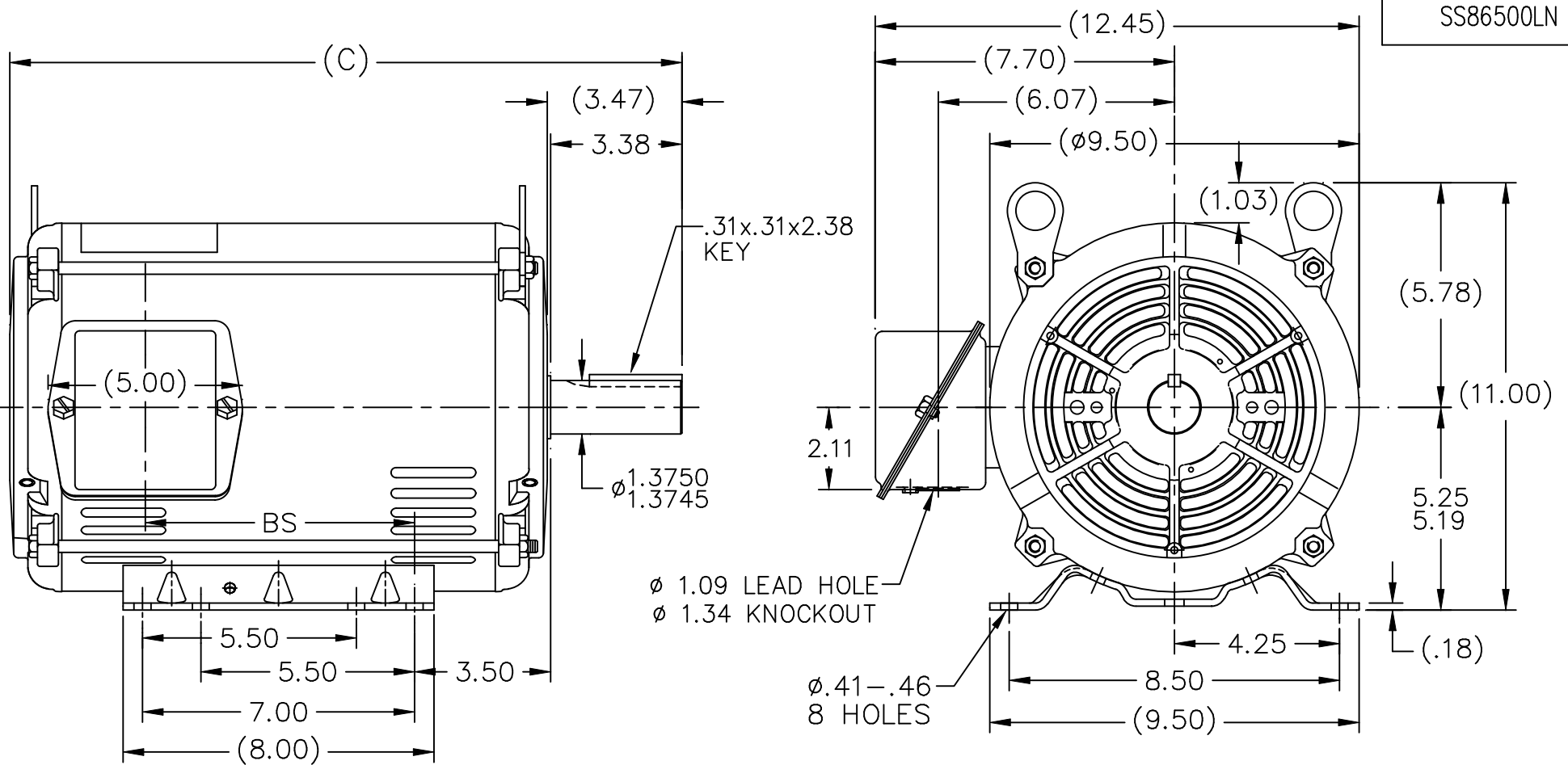
### Nameplate Specifications

Output HP	<b>10 Hp</b>	Output KW	<b>7.5 kW</b>
Frequency	<b>60 Hz</b>	Voltage	<b>200 V</b>
Current	<b>28.8 A</b>	Speed	<b>1750 rpm</b>
Service Factor	<b>1</b>	Phase	<b>3</b>
Efficiency	<b>89.5 %</b>	Duty	<b>120/80 Starts/Hour</b>
Insulation Class	<b>F</b>	Design Code	<b>INV</b>
KVA Code	<b>C</b>	Frame	<b>215T</b>
Enclosure	<b>Drip Proof</b>	Overload Protector	<b>No</b>
Ambient Temperature	<b>40 °C</b>	Drive End Bearing Size	<b>6307</b>
Opp Drive End Bearing Size	<b>6206</b>	UL	<b>Recognized</b>
CSA	<b>Y</b>	CE	<b>Y</b>
IP Code	<b>22</b>		

### Technical Specifications

Electrical Type	<b>Squirrel Cage Induction Run</b>	Starting Method	<b>Wye Start Delta Run</b>
Poles	<b>4</b>	Rotation	<b>Reversible</b>
Mounting	<b>Rigid base</b>	Motor Orientation	<b>HORIZONTAL</b>
Drive End Bearing	<b>BALL</b>	Opp Drive End Bearing	<b>BALL</b>
Frame Material	<b>Rolled Steel</b>	Shaft Type	<b>T</b>
Overall Length	<b>17.29 in</b>	Frame Length	<b>11.15 in</b>
Shaft Diameter	<b>1.375 in</b>	Shaft Extension	<b>3.38 in</b>
Assembly/Box Mounting	<b>F1/F2 CAPABLE</b>		
Outline Drawing	<b>A-SS86500LN-1115</b>	Connection Diagram	<b>A-EE7340-LN</b>


SS86500LN



NOTES:

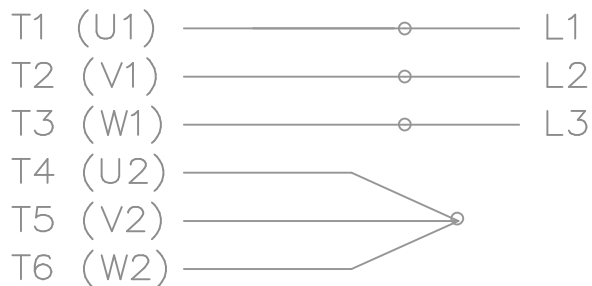
1. NAMEPLATE TO BE READ FROM C'BOX SIDE OF MOTOR.
2. BOX CAN BE MOUNTED IN 90° STEPS.
3. BOX WILL BE AT OPPOSITE SIDES IN F2 MOUNTING.
4. BOX CAN BE MOUNTED ON OPPOSITE SIDE BY REMOVING BRACKETS AND TURNING FRAME 180°. (EXCEPT AS NOTED.)

DASH	FR.	C	BS	MOUNTING
965	213T	15.79	5.43	
1115	213/15T	17.29	6.93	
1240	213/15T	18.54	8.18	F1 ONLY

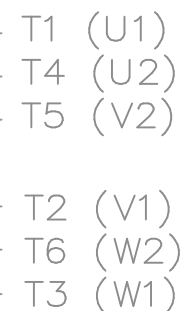
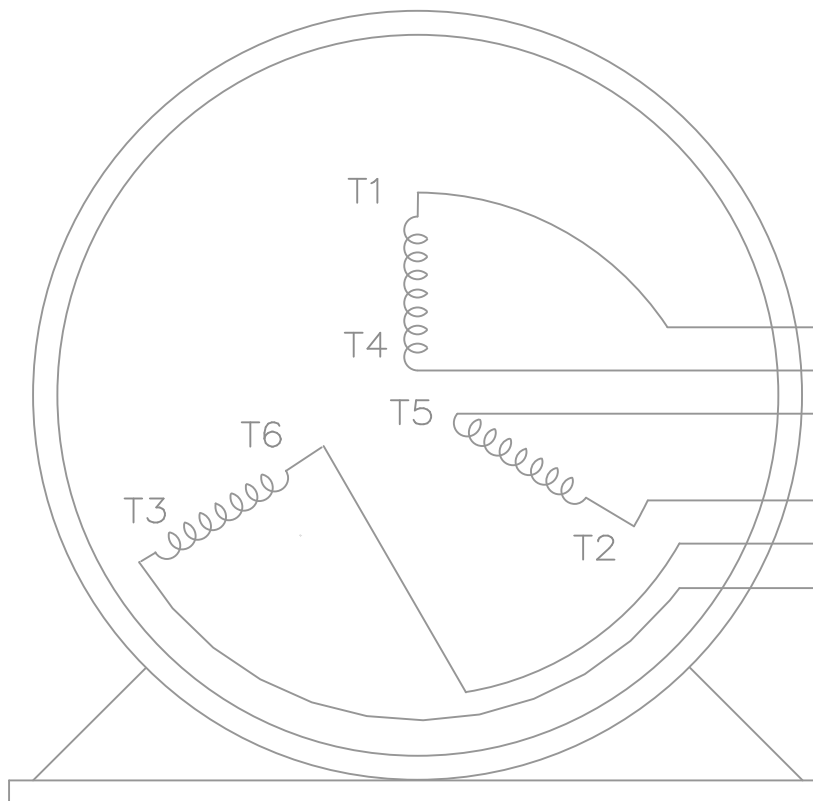
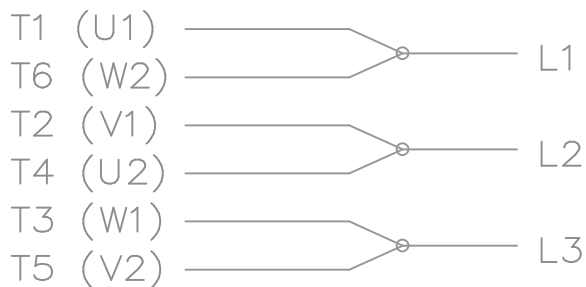
				TOLERANCES UNLESS SPECIFIED			DRAWN TRB 07-14-1999		
NO.	REVISION	BY & DATE	CHK	ANG	FINISH		SCALE	1=4	
5	REISSUE - REVISED BORDER TO LINCOLN LOGO	MSG 11-04-2004	ML	DEC.	INCHES	TITLE OUTLINE 210T FRAME -BB -TS -DR.PR.  MAT'L.  FINISH	CHK	ML 07-20-1999	
4	REMOVED DASH 965 FROM SERIES CN38252	RWR 07-20-2004	ML	.X	±.1		APPD	GK 07-20-1999	
3	UPDATED 'C' DIMS PER ACTUAL PARTS CN29200-320	CAV 04-11-2000	ML	.XX	±.03		SCALE	1=4	
2	UPDATED 'C'BOX GEOMETRY CN28425	DRS 01-25-2000	ML	.XXX	±.005		REF		
1	NEW DRAWING	TRB 07-20-1999	ML	.XXXX	±.0005		FMF		
THIS DRAWING IN DESIGN AND DETAIL IS OUR PROPERTY AND MUST NOT BE USED EXCEPT IN CONNECTION WITH OUR WORK ALL RIGHTS OF DESIGN AND INVENTION ARE RESERVED THIS IS AN ELECTRONICALLY GENERATED DOCUMENT - DO NOT SCALE THIS PRINT		RFP	CAD FILE		ss86500ln	SIZE	DRAWING NO.	PAGE 1 OF 1	REV.
		DIST	LB			A	SS86500LN		5

THREE PHASE – Y START  
Δ RUN MOTOR

START




RUN



VIEW OF TERMINAL END

NOTE:  
IEC LEAD MARKINGS ARE NOTED  
IN PARENTHESES

T6CK  
T6BM  
T4CC  
T2DL  
T4C

				TOLERANCES UNLESS SPECIFIED			DRAWN BLR 10-04-1999		
				DEC.	INCHES		CHK DRS 10-04-1999		
				.X	±.1		APPD TB 10-04-1999		
3	REVISED TO MATCH M.E. ORIGINAL	TAT 07-25-2005	ML	.XX	±.02	TITLE CONNECTION DIAGRAM 3Ø – WYE START DELTA RUN	SCALE 1=1		
2	REVISED DRAWING MISTAKE CN 29200-2980	ERH 05-15-2003	ML	.XXX	±.005		REF		
1	NEW DRAWING	BLR 10-09-1999		.XXXX	±.0005		FMF		
NO.	REVISION	BY & DATE	CHK	ANG	±'30"	FINISH	PREV		
THIS DRAWING IN DESIGN AND DETAIL IS OUR PROPERTY AND MUST NOT BE USED EXCEPT IN CONNECTION WITH OUR WORK ALL RIGHTS OF DESIGN AND INVENTION ARE RESERVED THIS IS AN ELECTRONICALLY GENERATED DOCUMENT – DO NOT SCALE THIS PRINT				RFP	CAD FILE ee7340_In		SIZE	DRAWING NO. PAGE OF	REV.
				DIST	WA-LB-SB		A	EE7340-LN	3

Date: 1/31/2018

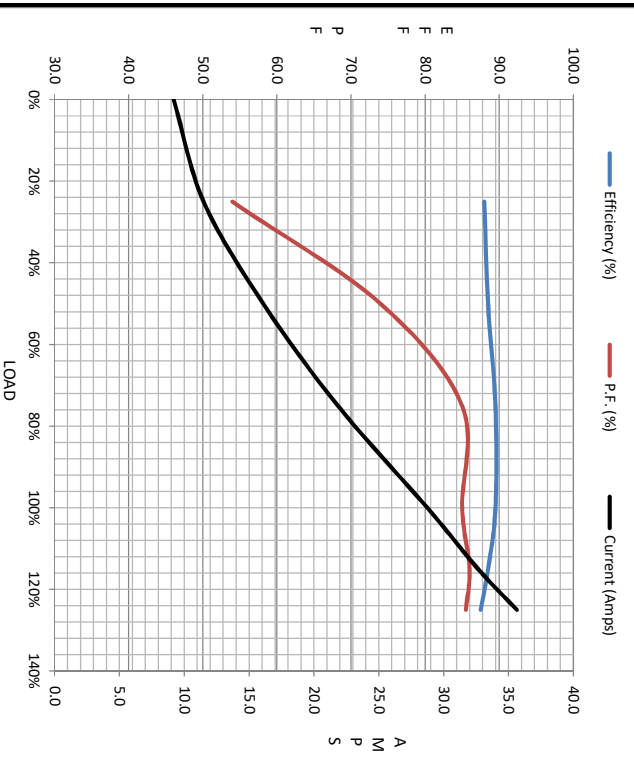
LM28967



Data @ 200 V

Motor Load Data						LR		
Load	0%	25%	50%	75%	100%	115%	125%	
Current (Amps)	9.2	11.5	16.1	21.9	28.8	32.7	35.7	170
Torque (ft-lb)	0.00	7.5	15.0	22.5	30.0	34.5	37.5	52.0
RPM	1800	1790	1780	1765	1750	1,745	1,740	0
Efficiency (%)		88.0	88.5	89.5	89.5	88.5	87.5	
P.F. (%)	6.5	54.0	74.0	85.0	85.0	86.0	85.5	46.0

Motor Speed Data					Information Block																					
Speed (RPM)	LR	Pull-Up	BD	Rated	Idle	HP	Sync. RPM	Frame	Enclosure	Construction	Voltage	Frequency	Design	LR Code letter	Service Factor	Temp Rise @ FL	Duty	Ambient	Elevation	Rotor/Shaft wk <sup>2</sup>	Ref Wdg	Sound Pressure @ 1M	VFD Rating	Outline Dwg	Conn. Diag	Additional Specifications:
	0	900	1510	1750	1800	10.0	1800	215	DP	TDW	200#200	60	B	G	1.15	0	60 MIN	40	1,000	1.00	66	NONE	A-SS86500LN-1115	A-EE7340-LN		
Current (Amps)	170	173	110	28.8	9.2																					
Torque (ft-lb)	52.0	48.0	78.0	30.0	0.00																					



EQUIV CKT (OHMS / PHASE)			
R1	R2	X1	Xm
0.1480	0.1050	0.4530	0.5390 11.6500

