

# PRODUCT INFORMATION PACKET



Model No: SSD2P15/20T61YEH2  
Catalog No: LM30094  
20/15,3600,DP,215T,3/60/230/460  
Elevator Duty



Regal and Leeson are trademarks of Regal Beloit Corporation or one of its affiliated companies.  
©2018 Regal Beloit Corporation, All Rights Reserved. MC017097E





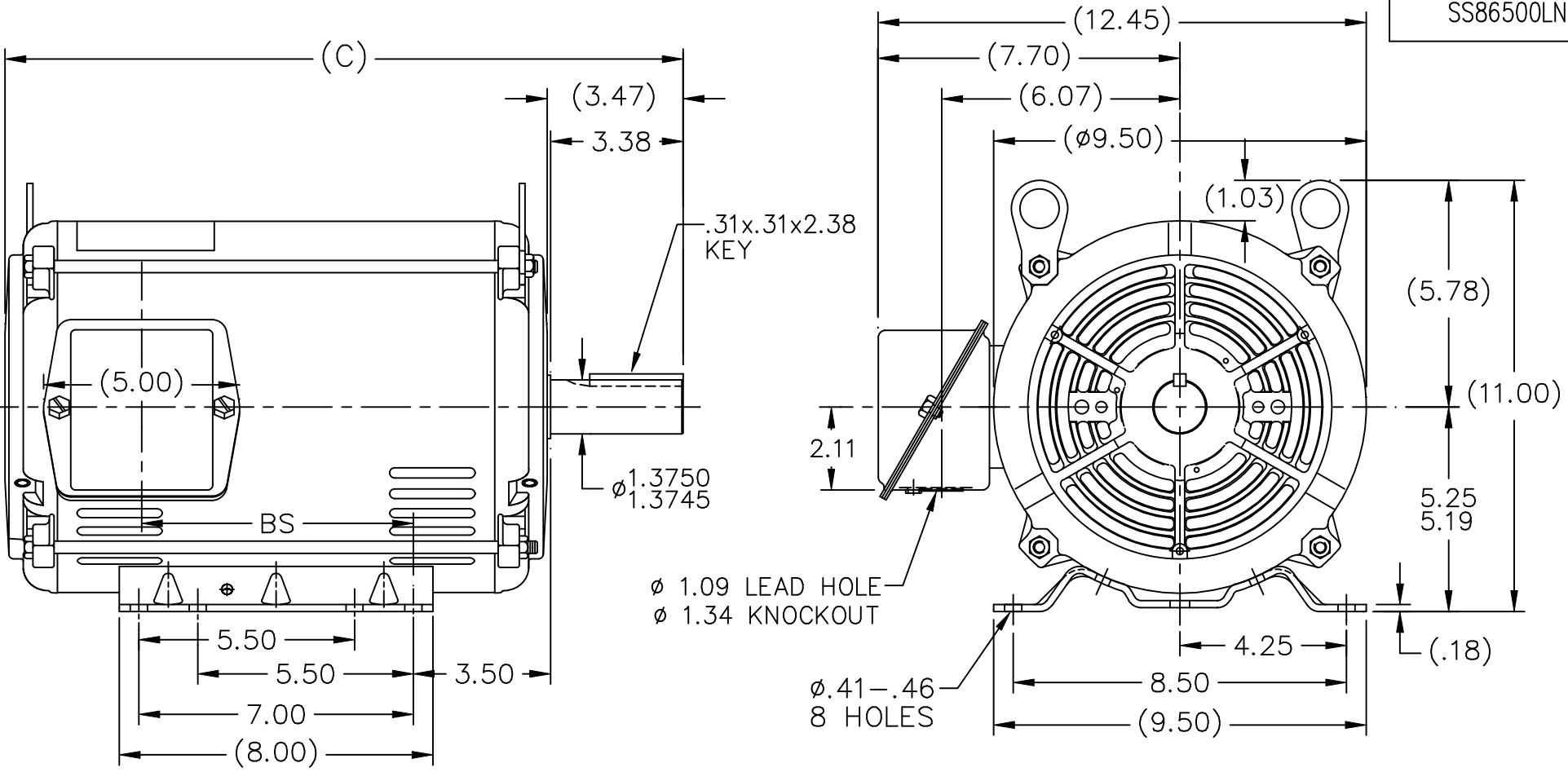
### Nameplate Specifications

Output HP	<b>15 Hp</b>	Output KW	<b>11.2 kW</b>
Frequency	<b>60 Hz</b>	Voltage	<b>230/460 V</b>
Current	<b>34.0/17.0 A</b>	Speed	<b>3510 rpm</b>
Service Factor	<b>1.15</b>	Phase	<b>3</b>
Efficiency	<b>90.2 %</b>	Duty	<b>120/80 Starts/Hour</b>
Insulation Class	<b>F</b>	Design Code	<b>INV</b>
KVA Code	<b>G</b>	Frame	<b>215T</b>
Enclosure	<b>Drip Proof</b>	Overload Protector	<b>No</b>
Ambient Temperature	<b>40 °C</b>	Drive End Bearing Size	<b>6307</b>
Opp Drive End Bearing Size	<b>6206</b>	UL	<b>Recognized</b>
CSA	<b>Y</b>	CE	<b>Y</b>
IP Code	<b>22</b>		

### Technical Specifications


Electrical Type	<b>Squirrel Cage Induction Run</b>	Starting Method	<b>Wye Start Delta Run</b>
Poles	<b>2</b>	Rotation	<b>Reversible</b>
Mounting	<b>Rigid base</b>	Motor Orientation	<b>HORIZONTAL</b>
Drive End Bearing	<b>BALL</b>	Opp Drive End Bearing	<b>BALL</b>
Frame Material	<b>Rolled Steel</b>	Shaft Type	<b>T</b>
Overall Length	<b>18.54 in</b>	Frame Length	<b>12.40 in</b>
Shaft Diameter	<b>1.375 in</b>	Shaft Extension	<b>3.38 in</b>
Assembly/Box Mounting	<b>F1/F2 CAPABLE</b>		
Outline Drawing	<b>A-SS86500LN-1240</b>	Connection Diagram	<b>A-EE7358-LN</b>

SS86500LN



- NOTES:
1. NAMEPLATE TO BE READ FROM C'BOX SIDE OF MOTOR.
  2. BOX CAN BE MOUNTED IN 90° STEPS.
  3. BOX WILL BE AT OPPOSITE SIDES IN F2 MOUNTING.
  4. BOX CAN BE MOUNTED ON OPPOSITE SIDE BY REMOVING BRACKETS AND TURNING FRAME 180°. (EXCEPT AS NOTED.)

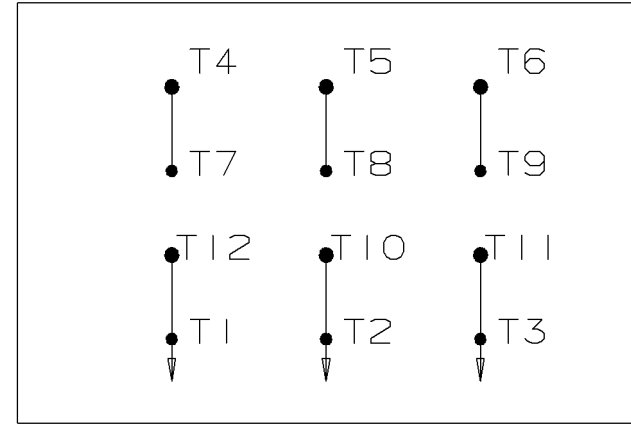
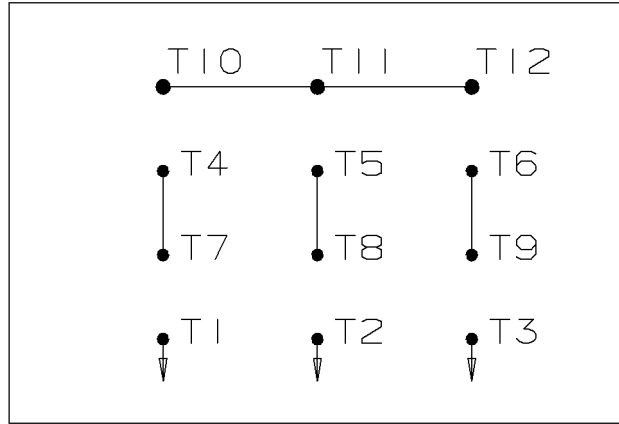
DASH	FR.	C	BS	MOUNTING
965	213T	15.79	5.43	
1115	213/15T	17.29	6.93	
1240	213/15T	18.54	8.18	F1 ONLY

				TOLERANCES UNLESS SPECIFIED			DRAWN TRB 07-14-1999		
NO.	REVISION	BY & DATE	CHK	ANG	FINISH		SCALE	1=4	
5	REISSUE - REVISED BORDER TO LINCOLN LOGO	MSG 11-04-2004	ML	DEC.	INCHES	TITLE OUTLINE 210T FRAME -BB -TS -DR.PR.  MAT'L.  PREV	CHK	ML 07-20-1999	
4	REMOVED DASH 965 FROM SERIES CN38252	RWR 07-20-2004	ML	.X	±.1		APPD	GK 07-20-1999	
3	UPDATED 'C' DIMS PER ACTUAL PARTS CN29200-320	CAV 04-11-2000	ML	.XX	±.03		SCALE	1=4	
2	UPDATED 'C'BOX GEOMETRY CN28425	DRS 01-25-2000	ML	.XXX	±.005		REF		
1	NEW DRAWING	TRB 07-20-1999	ML	.XXXX	±.0005		FMF		
THIS DRAWING IN DESIGN AND DETAIL IS OUR PROPERTY AND MUST NOT BE USED EXCEPT IN CONNECTION WITH OUR WORK ALL RIGHTS OF DESIGN AND INVENTION ARE RESERVED THIS IS AN ELECTRONICALLY GENERATED DOCUMENT - DO NOT SCALE THIS PRINT		RFP	CAD FILE		ss86500ln	SIZE	DRAWING NO.	PAGE 1 OF 1	REV.
		DIST	LB			A	SS86500LN		5

WYE START

HIGH VOLTAGE

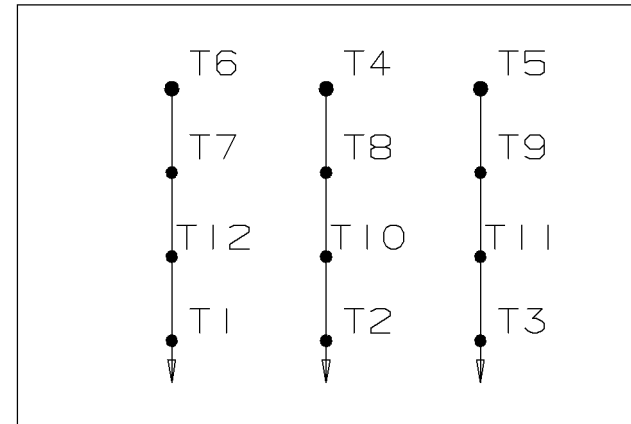
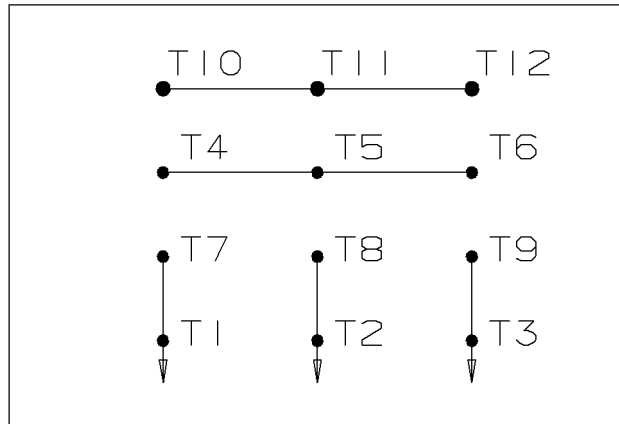
DELTA RUN



WYE START

LOW VOLTAGE

DELTA RUN



4/2 CKTY Δ

					<input checked="" type="checkbox"/> UNLESS OTHERWISE SPECIFIED DIMENSIONS ARE IN INCHES TOL. ON XX± .02    XXX± .005    XXXX± .0005    ANGLES± 7'30"			
						MAX. SURFACE ROUGHNESS UNLESS OTHERWISE NOTED	DRAWN BY DRS	12-07-1999
					FINISH	CHKD BY ML	12-07-1999	
					MATERIAL	APPD BY TB	12-07-1999	
REV	DATE	CHANGE	NAME	PART NAME CONNECTION DIAGRAM			DRWG NO A- EE7358-LN	

PURCHASED	CADD FILE NO.	EE7358-LN
-----------	---------------	-----------

Data Sheet

Date: 1/29/2018

LM30094



Data @ 460 V

Motor Load Data

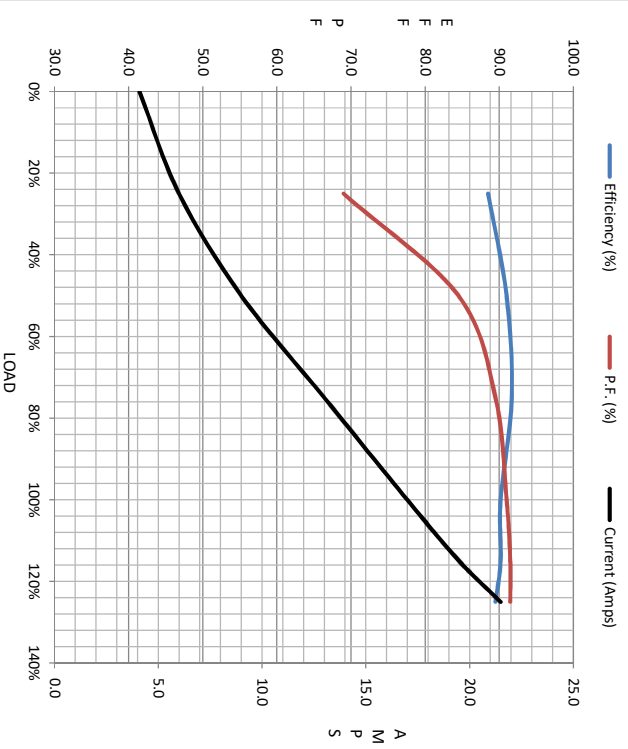
Load	0%	25%	50%	75%	100%	115%	125%	LR
Current (Amps)	4.1	6.0	9.0	13.0	17.0	19.5	21.5	116
Torque (ft-lb)	0.00	5.5	11.0	16.7	22.5	26.0	28.5	34.5
RPM	3600	3580	3560	3535	3510	3495	3485	0
Efficiency (%)		88.5	91.0	91.7	90.2	90.2	89.5	
P.F. (%)	9.0	69.0	84.5	89.5	91.0	91.5	91.5	42.0

Motor Speed Data

	LR	Pull-Up	BD	Rated	Idle
Speed (RPM)	0	1200	3025	3510	3600
Current (Amps)	116	100	73.5	17.0	4.1
Torque (ft-lb)	34.5	31.0	65.5	22.5	0.00

Information Block

HP	15.0
Sync. RPM	3600
Frame	215
Enclosure	DP
Construction	TDW
Voltage	230/460#230/460 V
Frequency	60 Hz
Design	A
LR Code letter	G
Service Factor	1.15
Temp Rise @ FL	35 °C
Duty	60 MIN
Ambient	40 °C
Elevation	1,000 feet
Rotor/Shaft wk <sup>2</sup>	0.60 LB-Ft <sup>2</sup>
Ref Wdg	K2152149 R5
Sound Pressure @ 1M	75 dBA
VFD Rating	NONE
Outline Dwg	A-SS86500LN-1240
Conn. Diag	A-EE7358-LN
Additional Specifications:	
0	
EQUIV CKT (OHMS / PHASE)	
R1	R2
0.0000	0.0000
X1	X2
0.0000	0.0000
Xm	Xm
0.0000	0.0000



Speed - Torque Curve

