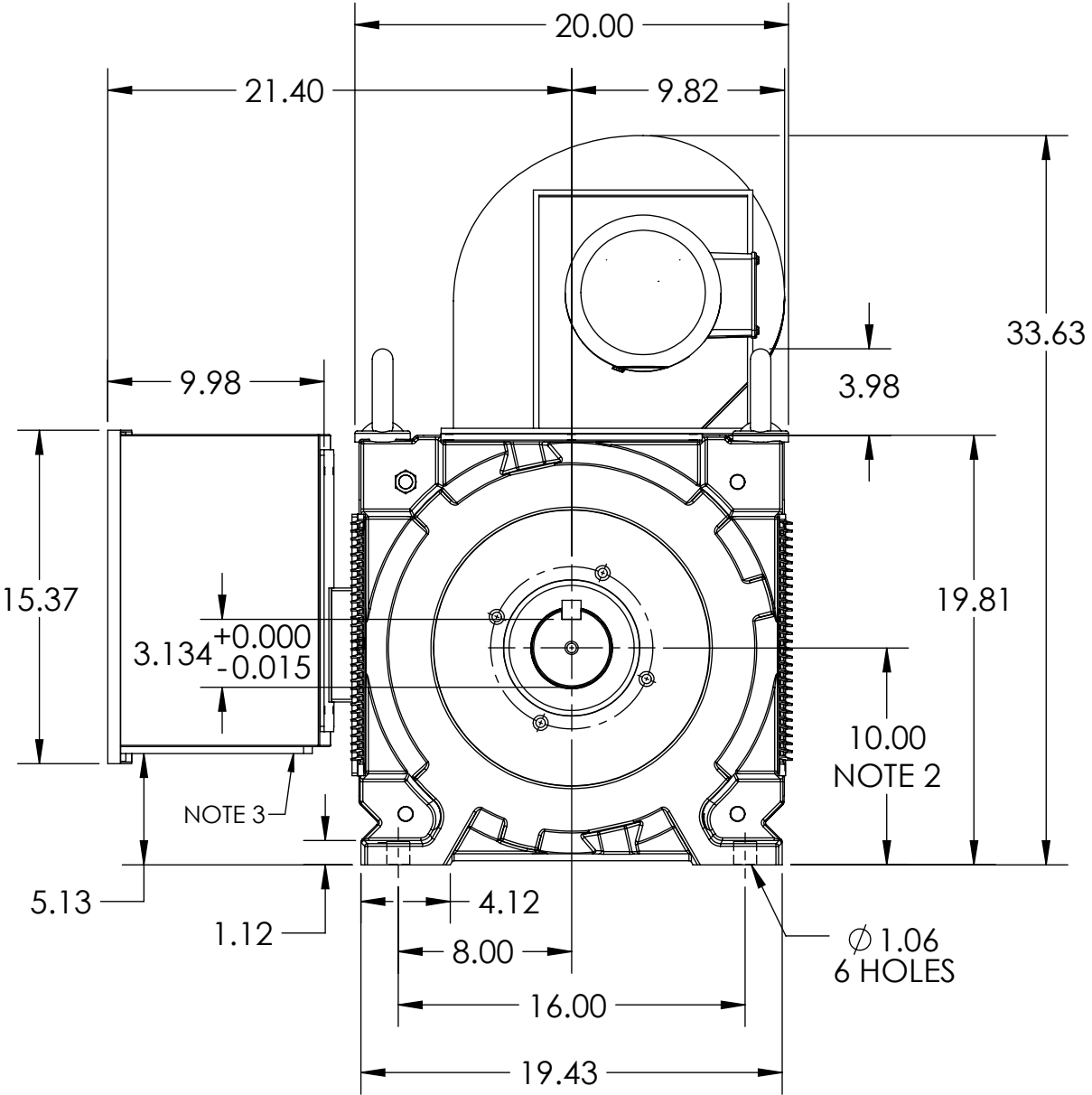
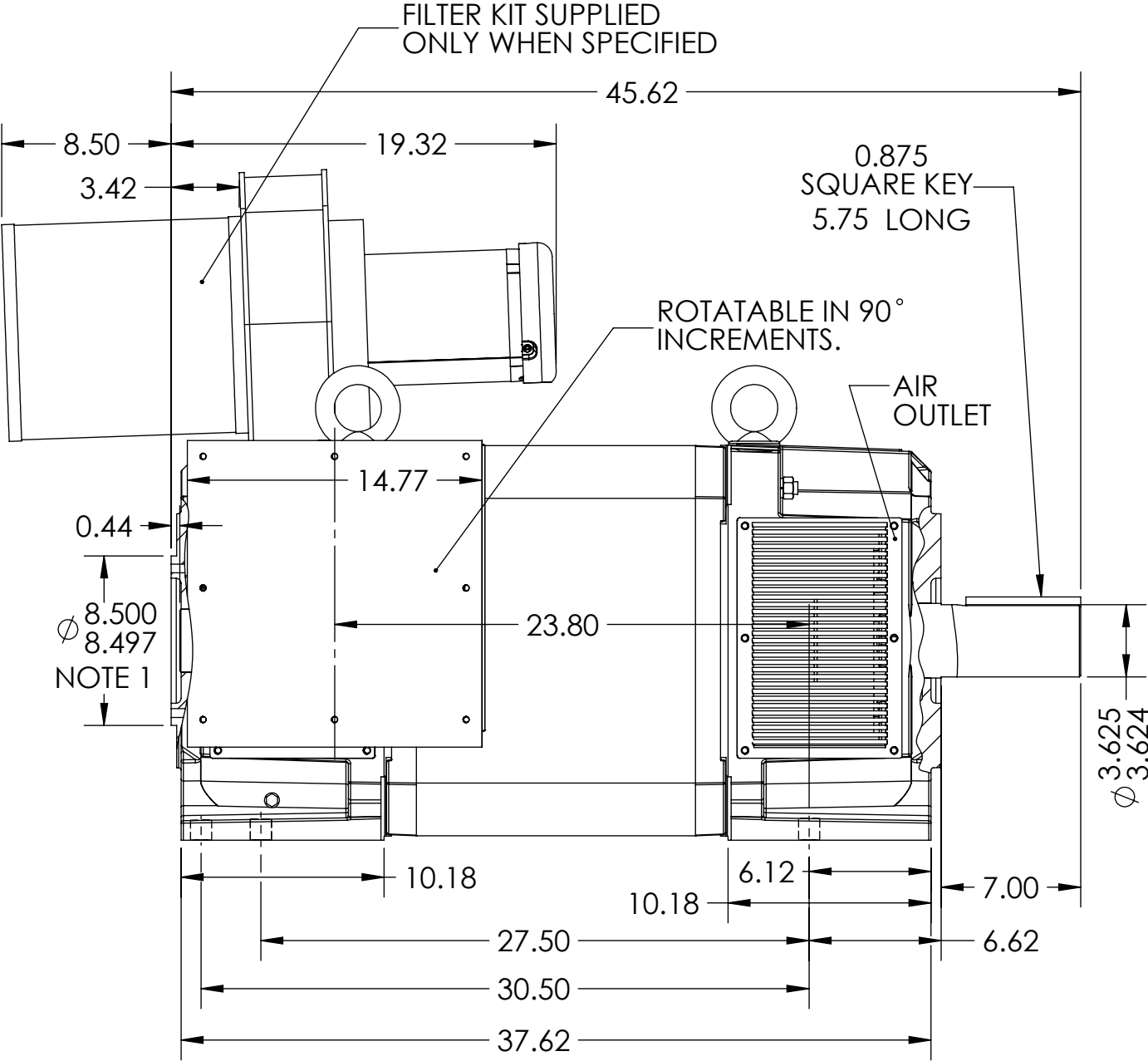


RPM-AC VARIABLE SPEED ALTERNATING CURRENT MOTOR  
RL4022Z

ENCLOSURE: DRIP PROOF  
MOUNTING: FOOT

COOLING: FORCED VENTILATED

ACCESSORIES: PROVISIONS FOR  
TACHOMETER MOUNTING  
ONLY WHEN SPECIFIED



- NOTES
- O.D.E. C-FACE & TACHOMETER MOUNTING. 1/2-13 TAP  $\nabla$ .75 ON A  $\phi$  7.25 B.C. FACE RUNOUT AND ECCENTRICITY 0.004 MAX. T.I.R.
  - SHAFT HEIGHT WILL NOT BE EXCEEDED. SHIMS UP TO 0.06 INCHES IN THICKNESS ARE USUALLY REQUIRED FOR COUPLED OR GEARED MACHINES.
  - REMOVABLE COVER PLATE FOR CUSTOMER DRILLING.

- TERMINAL BOX MAY BE LOCATED F1, F2 OR F3, IF SPECIFIED.
- REFER TO 616779-55 FOR SPECIFIED TACHOMETER DIMENSIONS.
- BLOWER ASSEMBLY CAN BE LOCATED F1, F2, OR F3, IF SPEC'D.
- BLOWER ASSEMBLY AND TERMINAL BOX CANNOT BE LOCATED AT THE SAME POSITION.

DIMENSIONS ARE IN INCHES  
MOTOR WEIGHT: 2260 LBS. (MAY VARY 15%  
FOR NON-STANDARD RATINGS AND / OR  
ACCESSORIES.)

CUSTOMER IS RESPONSIBLE FOR DETERMINING THAT BALDOR'S PRODUCT WILL PERFORM SUITABLY IN THE INTENDED APPLICATION

REV. DESC: ADD FOOT WIDTH TO DRAWING			
REV: B	VERSION: 02	REVISED: 10:36:56 09/06/2017	TDR: 000001042289
MODEL NO. 619651-001			REF:
BY: RGGWT			B

**BALDOR**

DIM SHEET,RL4022Z,RPM-AC,FV

619651-001

619651-001