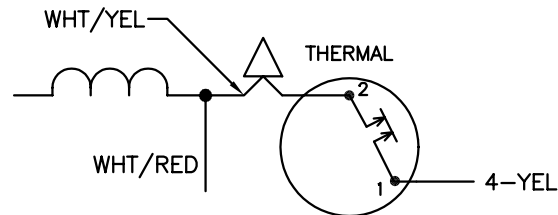


NOTES:

1. CONNECTIONS ARE SHOWN FOR CW ROTATION FACING END OPPOSITE SHAFT EXTENSION (OPP STD). FOR CCW ROTATION, INTERCHANGE (5) AND (8) INTERNALLY.
2. LEAD COLORS ARE OPTIONAL. LEADS MUST ALWAYS BE NUMBERED AS SHOWN.

INTERNAL CONNECTION FOR TWO TERMINAL THERMAL



|                                     |         |                         |              |
|-------------------------------------|---------|-------------------------|--------------|
| REV. DESC: ADD OPTIONAL LEAD COLORS |         |                         |              |
| REV. LTR: D                         | BY: JLP | REVISED: 11/15/00 10:43 | TDR: 0225139 |
| CD0348                              |         | FILE: AAA00028088       | REF: -       |
|                                     |         | MTL: -                  |              |

**BALDOR ELECTRIC Co.**

TYPE S, SV, FIX, THERMAL, 2 LDS, SW&CD&PLUG (DENTAL LATHE)